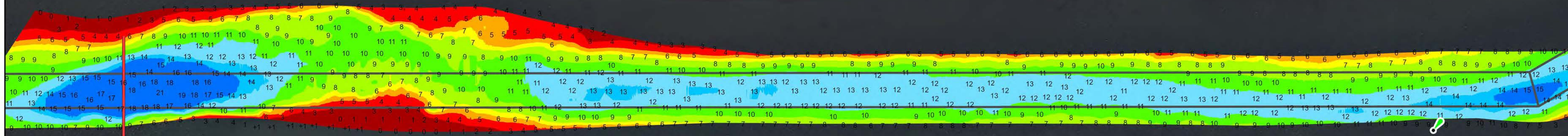


Section 3 - Tangent 10

Section 3 Tangent 9



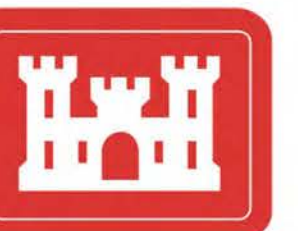
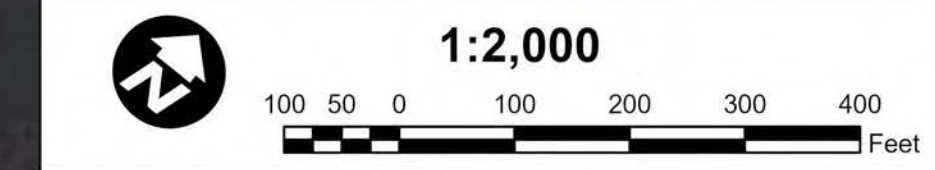
Matchline

103

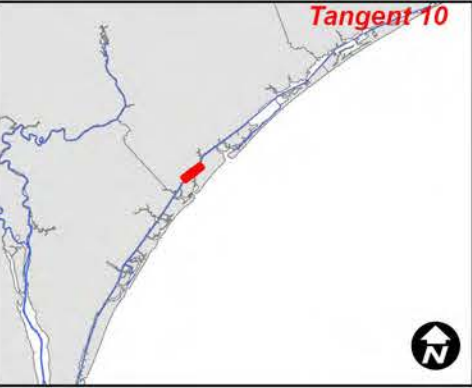
DA 213

DA 214

- NOTES:
- ELEVATIONS ARE IN FEET AND REFER TO NOAA'S REPORTED MEAN LOWER LOW WATER (MLLW) RELATIVE TO THE 1983-2001 TIDAL EPOCH.
 - PROJECT SURVEYED WITH DISTRICT SURVEY VESSEL "ROGERS", USING RTK GPS HORIZONTAL POSITIONING EQUIPMENT AND 200 KHZ SOUNDING EQUIPMENT.
 - HORIZONTAL DATUM NAD 1983. VERTICAL DATUM M.L.L.W..
 - TIDE GAGE LOCATED AT LIGHT 100. USE OF TIDE VALUES FOR THIS GAGE ARE RESTRICTED TO QUALITY ASSURANCE PURPOSES FOR VERIFICATION OF RTK TIDES. THE WILMINGTON DISTRICT WILL ONLY USE STAFF GAGE TIDAL VALUES FOR FINAL MAPPING AND QUANTITY CALCULATIONS IF RTK GPS IS UNAVAILABLE AT THE TIME OF SURVEY.
 - THIS PROJECT WAS DESIGNED BY THE WILMINGTON DISTRICT OF THE U.S. ARMY CORPS OF ENGINEERS. THE INITIALS AND SIGNATURES AND REGISTRATION DESIGNATIONS OF INDIVIDUALS APPEAR ON THESE PROJECT DOCUMENTS WITHIN THE SCOPE OF THEIR EMPLOYMENT AS REQUIRED BY ER1110-1-8152.
 - THE INFORMATION DEPICTED ON THIS SURVEY MAP REPRESENTS THE RESULTS OF SURVEYS MADE ON THE DATES INDICATED AND CAN ONLY BE CONSIDERED AS INDICATING THE GENERAL CONDITIONS EXISTING AT THAT TIME. THESE CONDITIONS ARE SUBJECT TO RAPID CHANGE DUE TO SHOALING EVENTS. A PRUDENT MARINER SHOULD NOT RELY EXCLUSIVELY ON THE INFORMATION PROVIDED HERE. REQUIRED BY 33 CFR 209.325
 - NAVIGATION AIDS LOCATED WITH DISTRICT SURVEY VESSEL, ACCURACY +/- 3 METERS.
 - FOR THE MOST UP TO DATE INFORMATION PLEASE CHECK OUR WEBSITE AT: WWW.SAW.USACE.ARMY.MIL



US Army Corps of Engineers
Wilmington District

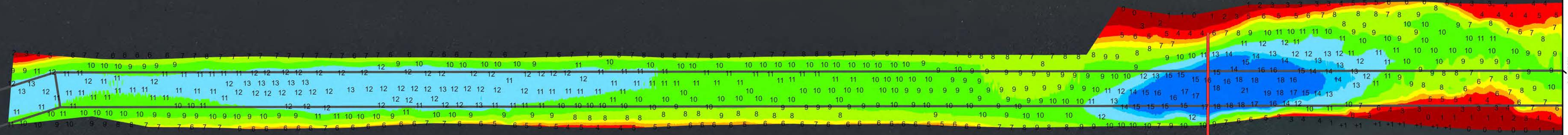


SURVEY DATE: 05 DECEMBER 2024	SURVEYED BY: LMT, DJD
MAP DATE: 13 DECEMBER 2024	MAPPED BY: K7OPNKMS
MAP SCALE: 1:2,000	PROCESSED BY: K7OPNKMS
IMAGERY DATE: 09 JULY 2024	MAP FILE NAME: IC_03_T10_20241205_CS
© 2024 MAXAR TECHNOLOGIES	

LEGEND	
Aids to Navigation	Elevation
Can	4 and Shallower
Nun	6 - 4
Danger Sign	7 - 6
Green Daybeacon	8 - 7
Red Daybeacon	10 - 8
Junction Marker	12 - 10
Green Light	14 - 12
Red Light	15 - 14
Green Lighted Buoy	15 and Deeper
Red Lighted Buoy	Matchlines
Mileboard	Navigation Channel
	Placement Areas

Section 3 - Tangent 10

Section 3 Tangent 11



Matchline

DA 221

DA 220

DA 219

DA 218

DA 217

DA 216

DA 215

DA 214

HYDROGRAPHIC SURVEY
U.S. ARMY ENGINEER DISTRICT
CORPS OF ENGINEERS
WILMINGTON, NORTH CAROLINA
**Section 3
Tangent 10**
HAMPSHIRE, NORTH CAROLINA