

HYDROGRAPHIC SURVEY

U.S. ARMY ENGINEER DISTRICT
CORPS OF ENGINEERS
WILMINGTON, NORTH CAROLINA

Atlantic Intracoastal Waterway

Section 3 Tangent 8

St. 0+00 - 35+00

NORTH CAROLINA

Esri, TomTom, Garmin, FAO, NOAA, USGS, EPA, USFWS, Esri, GEBCO, Garmin, NGS, etc.

TYPICAL SECTION

M.L.L.W., NAD 83

PROJECT DEPTH

90'

NOT TO SCALE

SURVEY INFO

Survey Date: 30 September & 01 October 2025

Map Date: 31 October 2025

Scale: 1:2,000

Imagery Date: 31 October 2025

© 2025 Maxar Technologies

For the most up to date information please check our website at: www.saw.usace.army.mil

Depth

4 6 7 8 10 12 14 >14

Feet

160 80 0 160 320 480

LEGEND

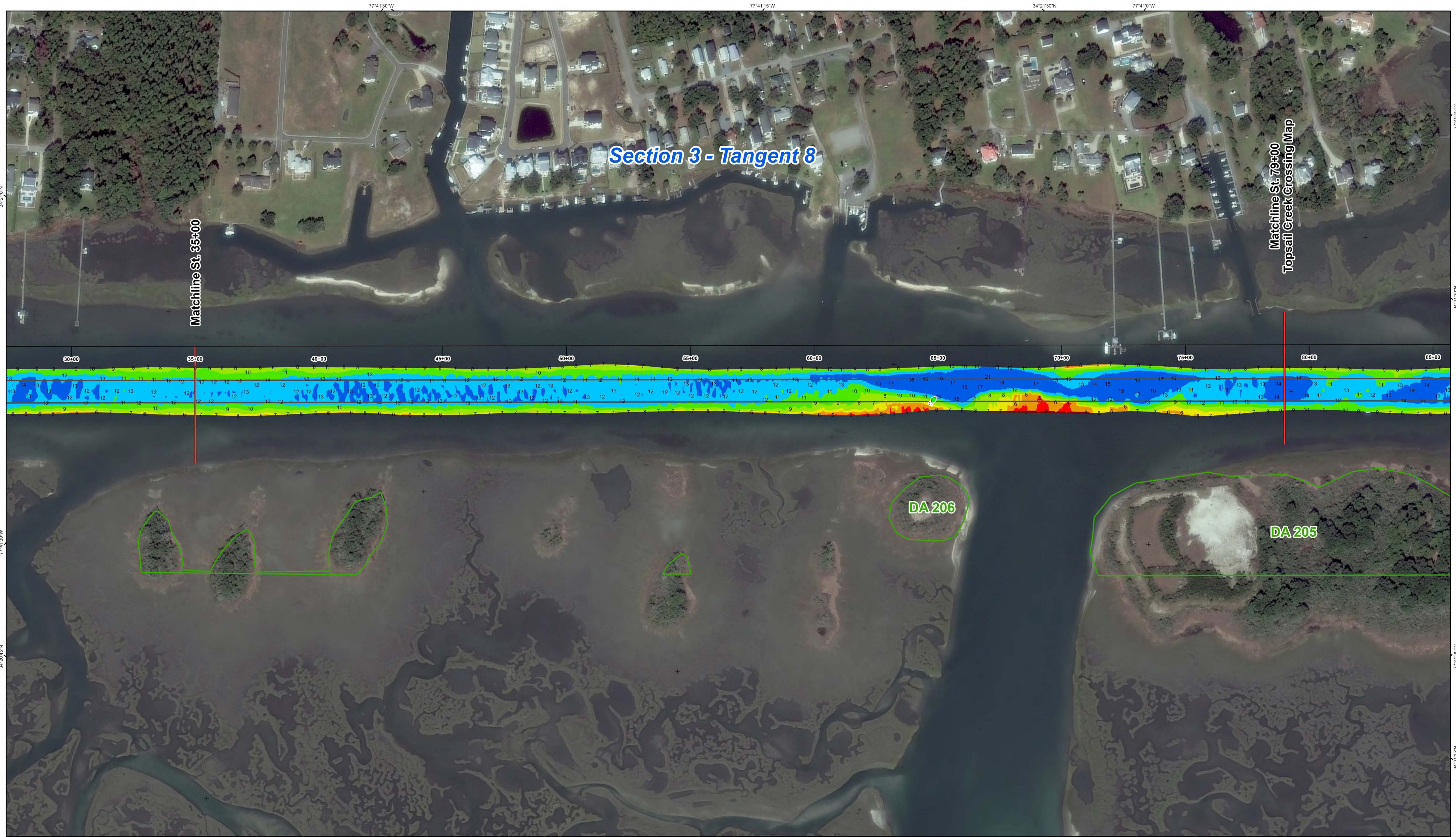
Aids to Navigation

- Green Daybeacon
- Red Daybeacon
- Junction Marker
- Green Light
- Can
- Nun
- Danger Sign
- Red Light
- Green Lighted Buoy
- Red Lighted Buoy
- Mileboard
- Matchlines
- Navigation Channel
- Placement Areas

The information depicted on this survey map represents the results of surveys made on the dates indicated and can only be considered as indicating the general conditions existing at that time. These conditions are subject to rapid change due to shoaling events. A prudent mariner should not rely exclusively on the information provided here. Required by 33 CFR 209.325

DOCUMENT INFO

File Name: IC_03_TG8_20250930_CS
Surveyed by: LMT,DJD
Mapped by: KT0PNKMS
Processed by: KT0PNKMS
Survey Vessel: ROGERS
Survey Collected in: 200 KHZ
Tide Gage: MILE BOARD 270



HYDROGRAPHIC SURVEY
U.S. ARMY ENGINEER DISTRICT
CORPS OF ENGINEERS
WILMINGTON, NORTH CAROLINA
Atlantic Intracoastal Waterway
**Section 3
Tangent 8**
St. 35+00 - 79+00

Esri, TomTom, Garmin,
FAO, NOAA, USGS, EPA,
USFWS, Esri, ABCO,
Garmin, NAD 83

TYPICAL SECTION
M.L.L.W., NAD 83
PROJECT
DEPTH
90'
NOT TO SCALE

SURVEY INFO
Survey Date: 30 September & 01 October 2025
Map Date: 31 October 2025
Scale: 1:2,000
Imagery Date: 31 October 2025
© 2025 Maxar Technologies
For the most up to date information please
check our website at: www.saw.usace.army.mil

Depth
4-6 6-7 7-8 8-10 10-12 12-14 >14

Feet
160 80 0 160 320 480

LEGEND
Aids to Navigation
Can
Nun
Danger Sign
Green Daybeacon
Red Daybeacon
Junction Marker
Green Light
Red Light
Green Lighted Buoy
Red Lighted Buoy
Mileboard
Matchlines
Navigation Channel
Placement Areas

The information depicted on this survey map represents the results of surveys made on the dates indicated and can only be considered as indicating the general conditions existing at that time. These conditions are subject to rapid change due to shoaling events. A prudent mariner should not rely exclusively on the information provided here. Required by 33 CFR 209.325

DOCUMENT INFO
File Name: IC_03_TG8_20250930_CS
Surveyed by: LMT,DJD
Mapped by: KTOPNKMS
Processed by: KTOPNKMS
Survey Vessel: ROGERS
Survey Collected in: 200 KHZ
Tide Gage: MILE BOARD 270