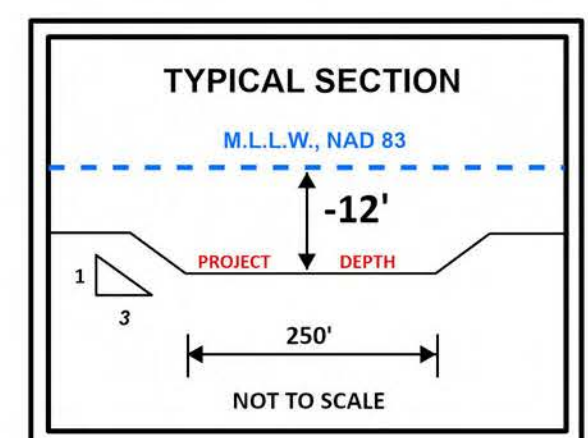
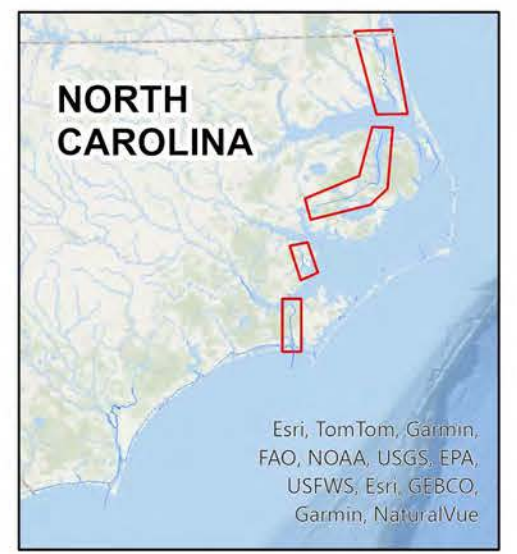


HYDROGRAPHIC SURVEY
 U.S. ARMY ENGINEER DISTRICT
 CORPS OF ENGINEERS
 WILMINGTON, NORTH CAROLINA
 Atlantic Intracoastal Waterway
**Core Creek
 Range S**
 St. 0+00 - 35+00



Survey Date: 10 December 2025
 Map Date: 12 December 2025
 Scale: 1:2,000
 Imagery Date: 31 October 2025
 © 2025 Maxar Technologies
 For the most up to date information please
 check our website at: www.saw.usace.army.mil

LEGEND

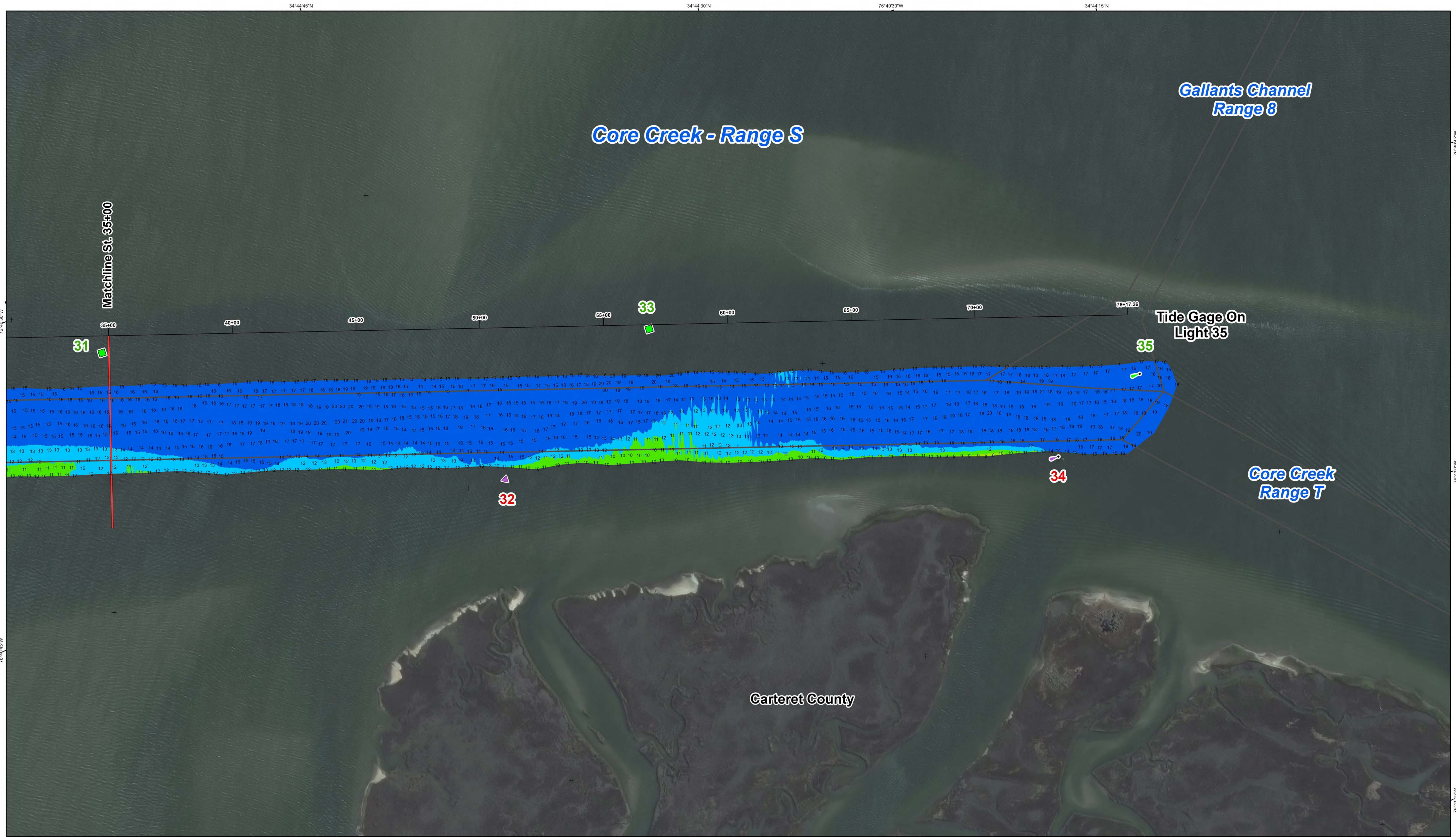
Green Daybeacon	Red Light	Matchlines
Can	Green Lighted Buoy	Navigation Channel
Nun	Red Lighted Buoy	
Danger Sign	Green Light	Mileboard

Depth scale: 4, 6, 7, 8, 10, 12, 14, >14 feet

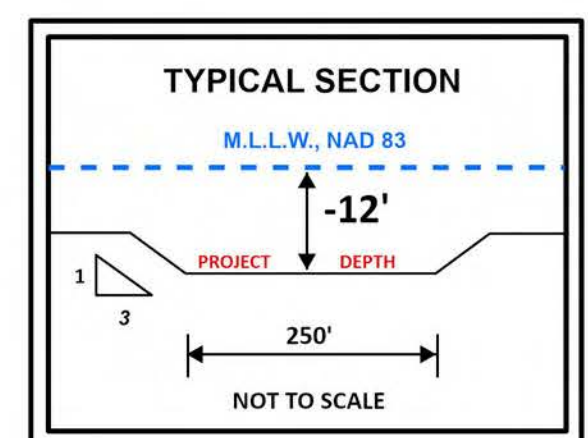
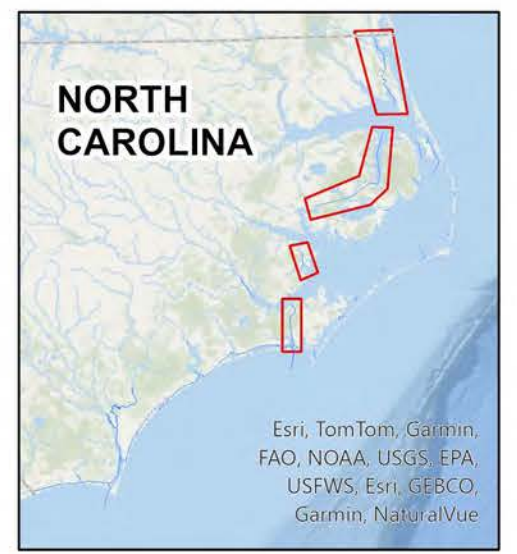
Scale bar: 160, 0, 160, 320, 480 feet

The information depicted on this survey map represents the results of surveys made on the dates indicated and can only be considered as indicating the general conditions existing at that time. These conditions are subject to rapid change due to shoaling events. A prudent mariner should not rely exclusively on the information provided here. Required by 33 CFR 209.325

DOCUMENT INFO
 File Name: IA_06_RRS_20251210_CS
 Surveyed by: WJC,JCC
 Mapped by: KTOPNKMS
 Processed by: KTOPNKMS
 Survey Vessel: SANDERSON
 Survey Collected in: 200 KHZ
 Tide Gage: LIGHT 35



HYDROGRAPHIC SURVEY
 U.S. ARMY ENGINEER DISTRICT
 CORPS OF ENGINEERS
 WILMINGTON, NORTH CAROLINA
 Atlantic Intracoastal Waterway
**Core Creek
 Range S**
 St. 35+00 - 76+17.26



SURVEY INFO
 Survey Date: 10 December 2025
 Map Date: 15 December 2025
 Scale: 1:2,000
 Imagery Date: 31 October 2025
 © 2025 Maxar Technologies
 For the most up to date information please check our website at: www.saw.usace.army.mil

Depth
 4-6 6-7 7-8 8-10 10-12 12-14 >14

Feet
 160 80 0 160 320 480

LEGEND

Green Daybeacon	Red Light	Matchlines
Can	Green Lighted Buoy	Navigation Channel
Junction Marker	Red Lighted Buoy	
Danger Sign	Green Light	Mileboard

The information depicted on this survey map represents the results of surveys made on the dates indicated and can only be considered as indicating the general conditions existing at that time. These conditions are subject to rapid change due to shoaling events. A prudent mariner should not rely exclusively on the information provided here. Required by 33 CFR 209.325

DOCUMENT INFO
 File Name: IA_06_RRS_20251210_CS
 Surveyed by: WJC,JCC
 Mapped by: KTOPNKMS
 Processed by: KTOPNKMS
 Survey Vessel: SANDERSON
 Survey Collected in: 200 KHZ
 Tide Gage: LIGHT 35