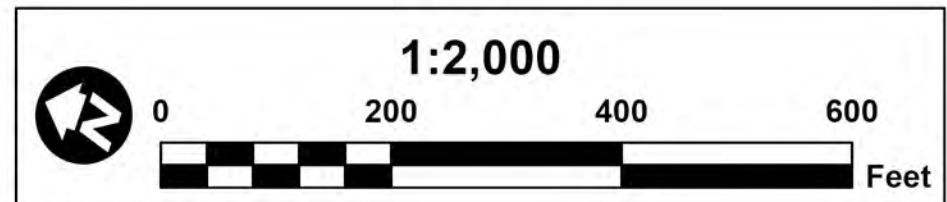
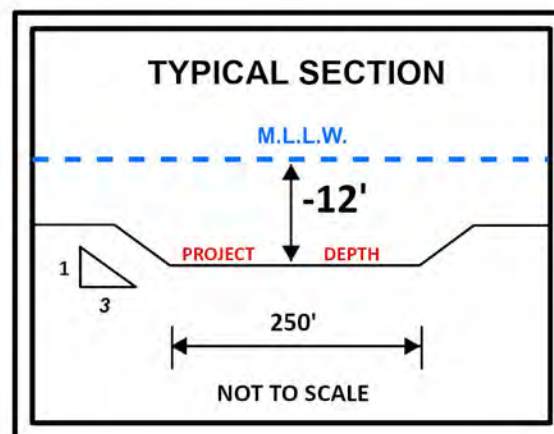
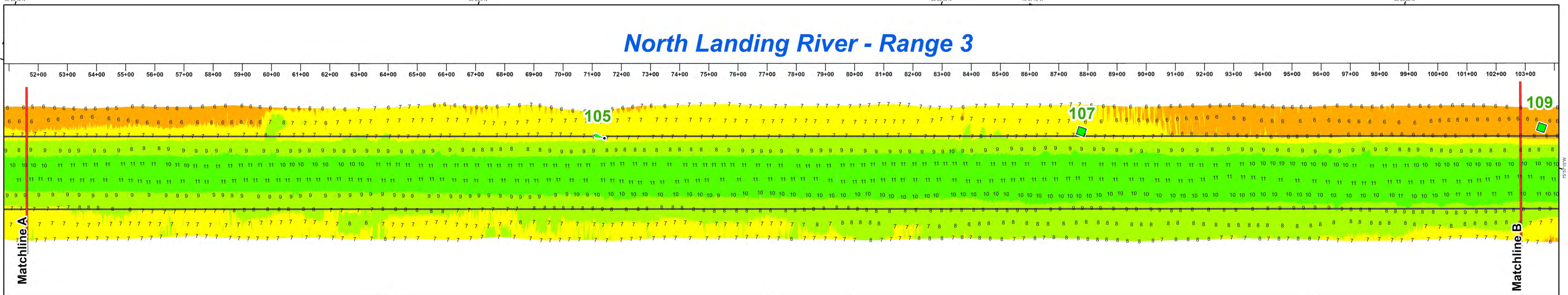
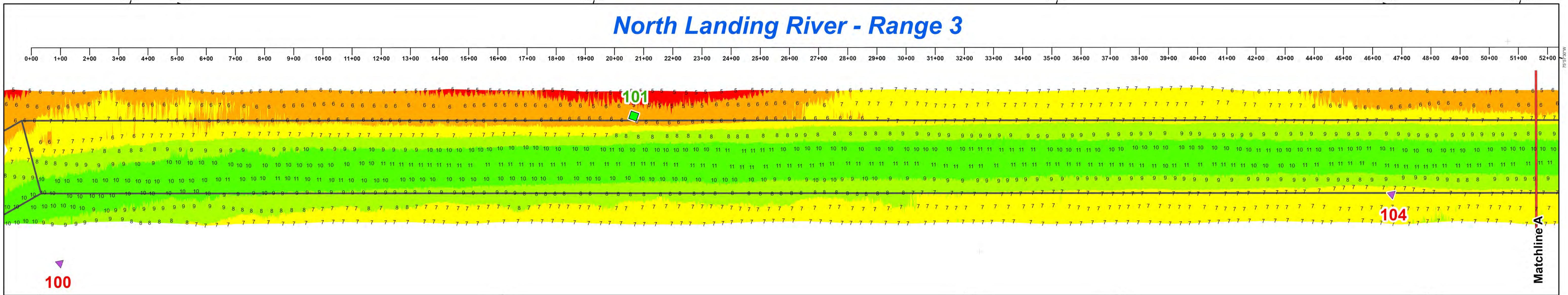
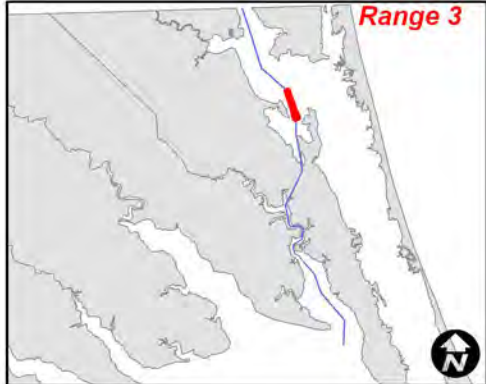


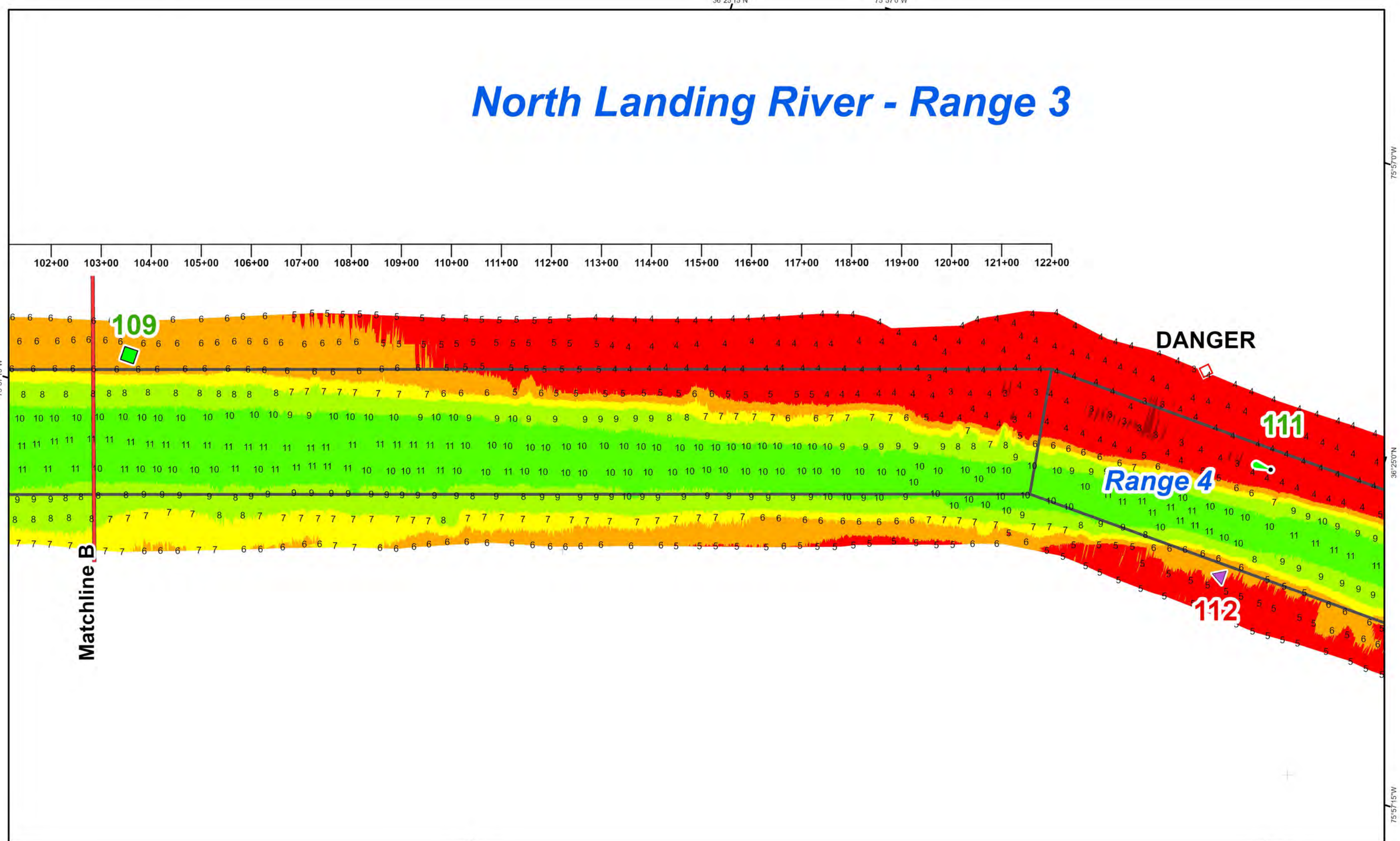


US Army Corps of Engineers  
Wilmington District



LEGEND	
	Can
	Nun
	Danger Sign
	Green Daybeacon
	Red Daybeacon
	Junction Marker
	Green Light
	Red Light
	Green Lighted Buoy
	Red Lighted Buoy
	Mileboard
	Elevation 4 and Shallower
	Elevation 6 - 4
	Elevation 7 - 6
	Elevation 8 - 7
	Elevation 10 - 8
	Elevation 12 - 10
	Elevation 14 - 12
	Elevation 15 - 14
	Elevation 15 and Deeper
	Matchlines
	Navigation Channel

- NOTES:
- ELEVATIONS ARE IN FEET AND REFER TO NOAA'S REPORTED MEAN LOWER LOW WATER (MLLW) RELATIVE TO THE 1983-2001 TIDAL EPOCH.
  - PROJECT SURVEYED WITH DISTRICT SURVEY VESSEL "KNOWLTON", USING RTK GPS HORIZONTAL POSITIONING EQUIPMENT AND 200 KHZ SOUNDING EQUIPMENT.
  - HORIZONTAL DATUM NAD 1983. VERTICAL DATUM M.L.L.W..
  - TIDE GAGE LOCATED AT: COINJOCK WILDLIFE RAMP. USE OF TIDE VALUES FOR THIS GAGE ARE RESTRICTED TO QUALITY ASSURANCE PURPOSES FOR VERIFICATION OF RTK TIDES. THE WILMINGTON DISTRICT WILL ONLY USE STAFF GAGE TIDAL VALUES FOR FINAL MAPPING AND QUANTITY CALCULATIONS IF RTK GPS IS UNAVAILABLE AT THE TIME OF SURVEY.
  - THIS PROJECT WAS DESIGNED BY THE WILMINGTON DISTRICT OF THE U.S. ARMY CORPS OF ENGINEERS. THE INITIALS AND SIGNATURES AND REGISTRATION DESIGNATIONS OF INDIVIDUALS APPEAR ON THESE PROJECT DOCUMENTS WITHIN THE SCOPE OF THEIR EMPLOYMENT AS REQUIRED BY ER1110-1-8152.
  - THE INFORMATION DEPICTED ON THIS SURVEY MAP REPRESENTS THE RESULTS OF SURVEYS MADE ON THE DATES INDICATED AND CAN ONLY BE CONSIDERED AS INDICATING THE GENERAL CONDITIONS EXISTING AT THAT TIME. THESE CONDITIONS ARE SUBJECT TO RAPID CHANGE DUE TO SHOALING EVENTS. A PRUDENT MARINER SHOULD NOT RELY EXCLUSIVELY ON THE INFORMATION PROVIDED HERE. REQUIRED BY 33 CFR 209.325
  - NAVIGATION AIDS LOCATED WITH DISTRICT SURVEY VESSEL, ACCURACY +/- 3 METERS.
  - FOR THE MOST UP TO DATE INFORMATION PLEASE CHECK OUR WEBSITE AT: WWW.SAW.USACE.ARMY.MIL



SURVEY DATE: 01 -02 FEBRUARY 2023	SURVEYED BY: DCH, JBG
MAP DATE: 07 FEBRUARY 2023	MAPPED BY: K7PDPGSG
MAP SCALE: 1:2,000	PROCESSED BY: K7PDPGSG
	MAP FILE NAME: IA_01_RG3_20230201_CS

**HYDROGRAPHIC SURVEY**  
 U.S. ARMY ENGINEER DISTRICT  
 CORPS OF ENGINEERS  
 WILMINGTON, NORTH CAROLINA  
**Atlantic Intracoastal Waterway**  
**North Landing River**  
**Range 3**  
 COINJOCK, NORTH CAROLINA