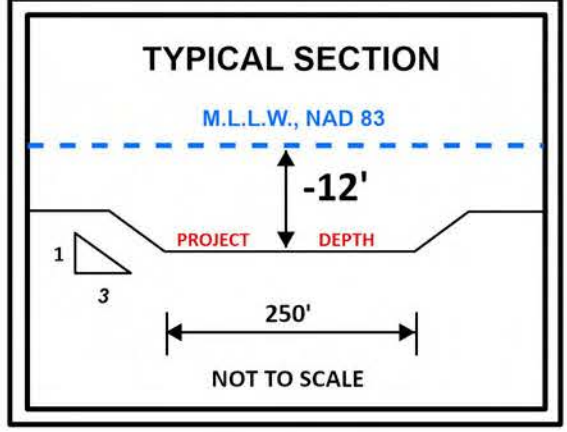
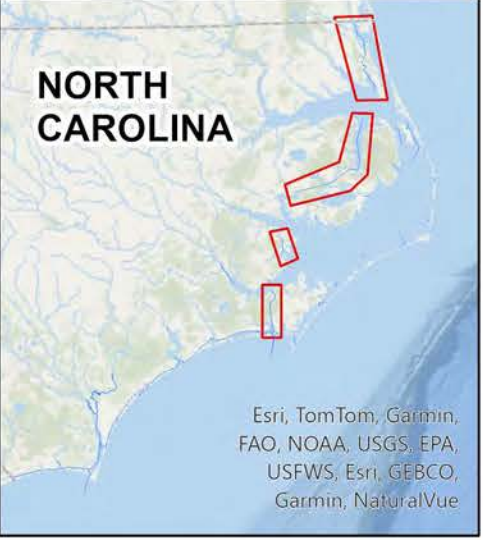


**HYDROGRAPHIC SURVEY**  
U.S. ARMY ENGINEER DISTRICT  
CORPS OF ENGINEERS  
WILMINGTON, NORTH CAROLINA  
Atlantic Intracoastal Waterway  
**North River  
Range 2**



**SURVEY INFO**  
Survey Date: 11 March 2025  
Map Date: 13 January 2026  
Scale: 1:2,000  
For the most up to date information please  
check our website at: [www.saw.usace.army.mil](http://www.saw.usace.army.mil)

**Depth**

4-6 6-7 7-8 8-10 10-12 12-14 >14

**Feet**

160 80 0 160 320 480

**LEGEND**

**Aids to Navigation**

- Green Daybeacon
- Red Daybeacon
- Junction Marker
- Green Light
- Can
- Nun
- Danger Sign
- Red Light
- Green Lighted Buoy
- Red Lighted Buoy
- Mileboard
- Matchlines
- Navigation Channel
- Placement Areas

The information depicted on this survey map represents the results of surveys made on the dates indicated and can only be considered as indicating the general conditions existing at that time. These conditions are subject to rapid change due to shoaling events. A prudent mariner should not rely exclusively on the information provided here. Required by 33 CFR 209.325

**DOCUMENT INFO**  
File Name: IA\_02\_R16\_20250311\_CS  
Surveyed by: DCH,JBG  
Mapped by: KTOPNURA  
Processed by: KTOPNURA  
Survey Vessel: KNOWLTON  
Survey Collected in: 200 KHZ  
Tide Gauge: COINJOCK WILDLIFE RAMP