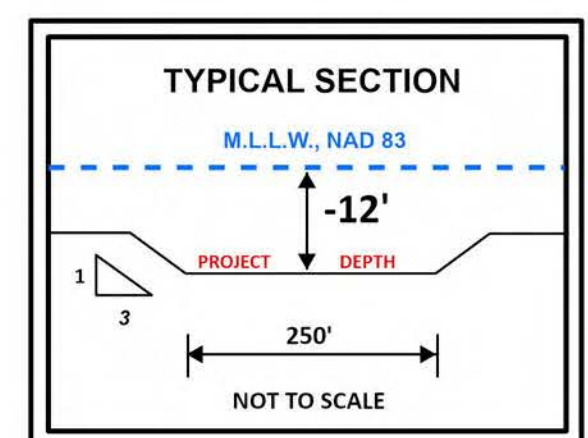
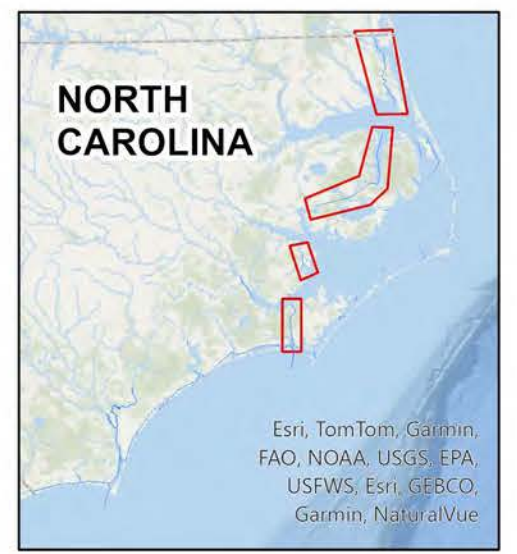


HYDROGRAPHIC SURVEY
 U.S. ARMY ENGINEER DISTRICT
 CORPS OF ENGINEERS
 WILMINGTON, NORTH CAROLINA
 Atlantic Intracoastal Waterway
**North River
 Ranges 9 - 13**



SURVEY INFO
 Survey Date: 18 March 2025
 Map Date: 13 January 2026
 Scale: 1:2,000
 For the most up to date information please
 check our website at: www.saw.usace.army.mil

Depth
 4 - 6 - 7 - 8 - 10 - 12 - 14 - >14

Feet
 160 80 0 160 320 480

LEGEND

Green Daybeacon	Red Light	Navigation Channel
Can	Green Lighted Buoy	
Nun	Red Lighted Buoy	
Danger Sign	Mileboard	
Junction Marker		
Green Light		

The information depicted on this survey map represents the results of surveys made on the dates indicated and can only be considered as indicating the general conditions existing at that time. These conditions are subject to rapid change due to shoaling events. A prudent mariner should not rely exclusively on the information provided here. Required by 33 CFR 209.325

DOCUMENT INFO
 File Name: IA_02_713_20250318_CS
 Surveyed by: DCH,JBG
 Mapped by: KTOPNURA
 Processed by: KTOPNURA
 Survey Vessel: KNOWLTON
 Survey Collected in: 200 KHZ
 Tide Gage: COINJOCK WILDLIFE RAMP