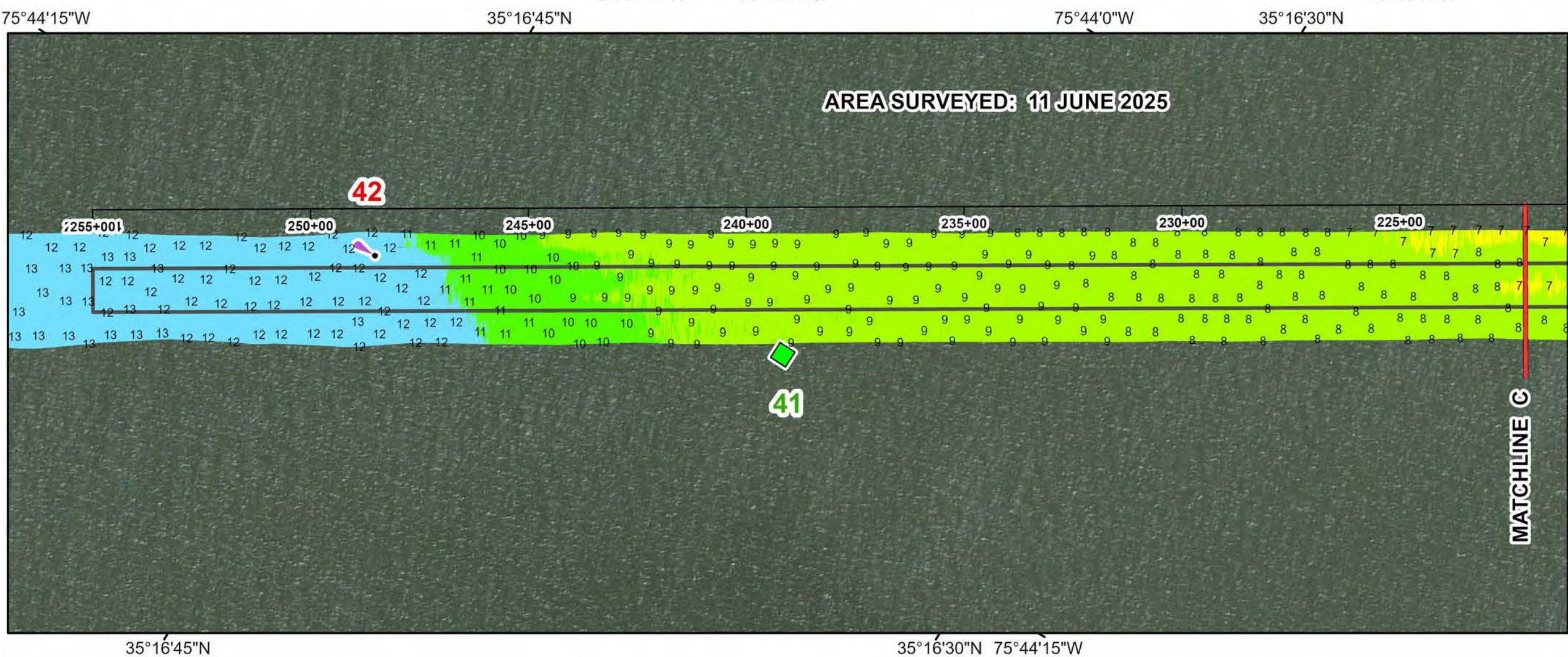
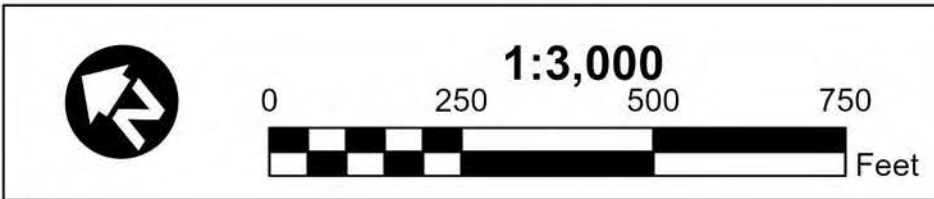
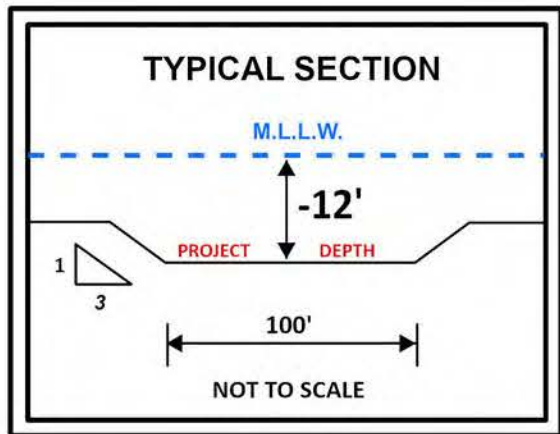


NOTES:

- ELEVATIONS ARE IN FEET AND REFER TO NOAA'S REPORTED MEAN LOWER LOW WATER (MLLW) RELATIVE TO THE 1985-2001 TIDAL EPOCH.
- PROJECT SURVEYED WITH DISTRICT SURVEY VESSEL "KNOWLTON", USING RTK GPS HORIZONTAL POSITIONING EQUIPMENT AND 200 KHZ SOUNDING EQUIPMENT.
- HORIZONTAL DATUM NAD 1983. VERTICAL DATUM M.L.L.W..
- TIDE GAGE LOCATED AT VILLAGE MARINA. USE OF TIDE VALUES FOR THIS GAGE ARE RESTRICTED TO QUALITY ASSURANCE PURPOSES FOR VERIFICATION OF RTK TIDES. THE WILMINGTON DISTRICT WILL ONLY USE STAFF GAGE TIDAL VALUES FOR FINAL MAPPING AND QUANTITY CALCULATIONS IF RTK GPS IS UNAVAILABLE AT THE TIME OF SURVEY.
- THIS PROJECT WAS DESIGNED BY THE WILMINGTON DISTRICT OF THE U.S. ARMY CORPS OF ENGINEERS. THE INITIALS AND SIGNATURES AND REGISTRATION DESIGNATIONS OF INDIVIDUALS APPEAR ON THESE PROJECT DOCUMENTS WITHIN THE SCOPE OF THEIR EMPLOYMENT AS REQUIRED BY ER1110-1-8152.
- THE INFORMATION DEPICTED ON THIS SURVEY MAP REPRESENTS THE RESULTS OF SURVEYS MADE ON THE DATES INDICATED AND CAN ONLY BE CONSIDERED AS INDICATING THE GENERAL CONDITIONS EXISTING AT THAT TIME. THESE CONDITIONS ARE SUBJECT TO RAPID CHANGE DUE TO SHOALING EVENTS. A PRUDENT MARINER SHOULD NOT RELY EXCLUSIVELY ON THE INFORMATION PROVIDED HERE. REQUIRED BY 33 CFR 209.325
- NAVIGATION AIDS LOCATED WITH DISTRICT SURVEY VESSEL, ACCURACY +/- 3 METERS.
- FOR THE MOST UP TO DATE INFORMATION PLEASE CHECK OUR WEBSITE AT: WWW.SAW.USACE.ARMY.MIL

Legend

- | Aids to Navigation | Elevation |
|--------------------|--------------------|
| Can | 4 and Shallower |
| Nun | 6 - 4 |
| Danger Sign | 7 - 6 |
| Green Daybeacon | 8 - 7 |
| Red Daybeacon | 10 - 8 |
| Junction Marker | 12 - 10 |
| Green Light | 14 - 12 |
| Red Light | 15 - 14 |
| Green Lighted Buoy | 15 and Deeper |
| Red Lighted Buoy | Matchlines |
| Mileboard | Navigation Channel |
| Tide Gage | |

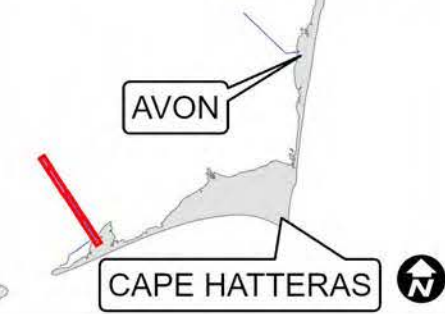


US Army Corps
of Engineers
Wilmington District

NORTH CAROLINA



Rollinson Channel



SURVEY DATE: 25 MARCH; 22 MAY, 11 JUNE 2025	SURVEYED BY: DCH, JBG
MAP DATE: 12 JUNE 2025	MAPPED BY: KTOPNDJM
MAP SCALE: 1:3,000	PROCESSED BY: KTOPNKMIS
IMAGERY DATE: 16 APRIL 2025	
© 2025 MAXAR TECHNOLOGIES	MAP FILE NAME: RC_01_ROL_20250611_CS

HYDROGRAPHIC SURVEY

U.S. ARMY ENGINEER DISTRICT
CORPS OF ENGINEERS
WILMINGTON, NORTH CAROLINA

ROLLINSON CHANNEL

Hatteras, North Carolina