



US Army Corps  
of Engineers  
Wilmington District

NORTH CAROLINA



Silver Lake Harbor



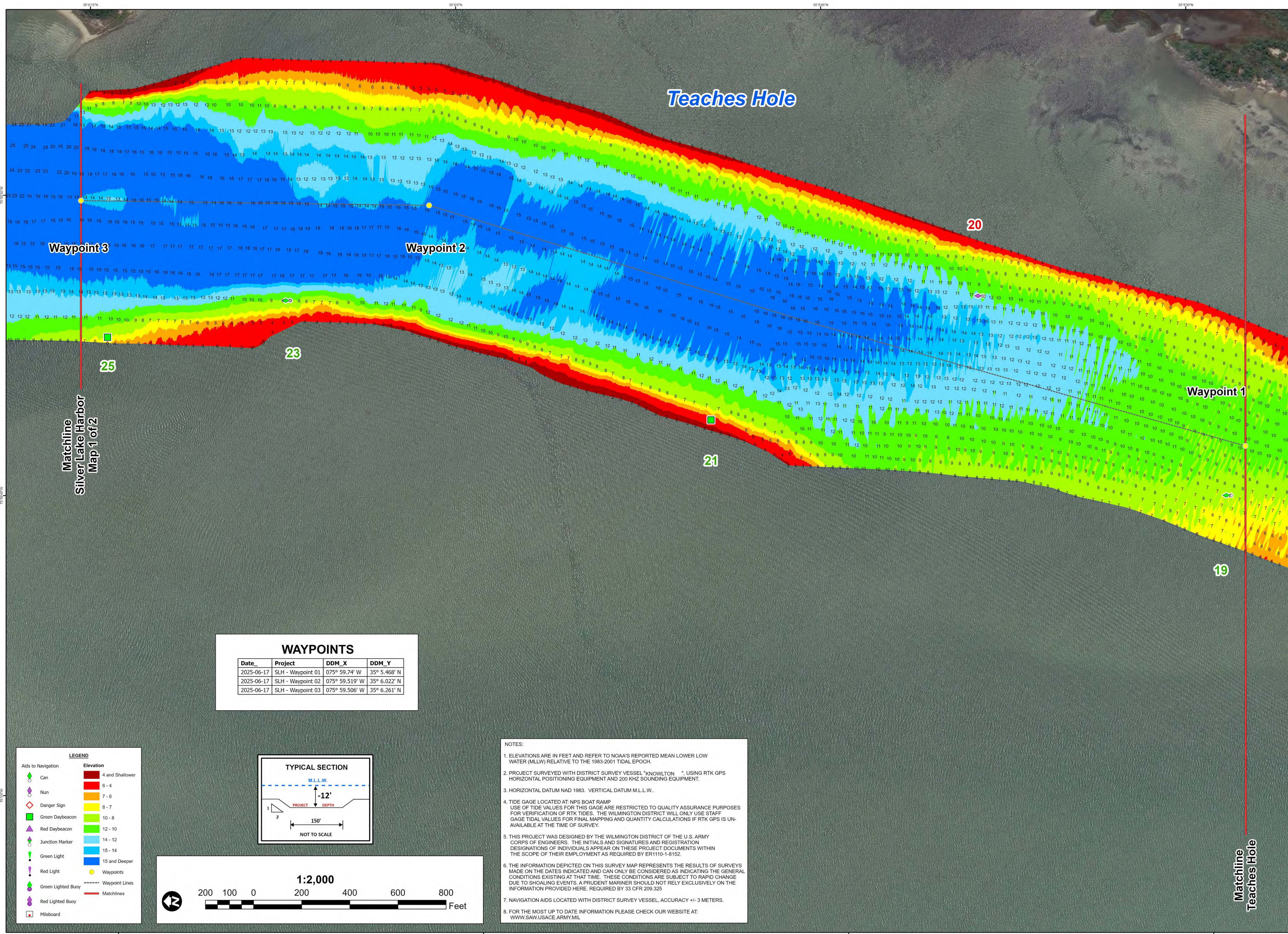
SURVEY DATE: 17 JUNE 2025	SURVEYED BY: DCH, JBG
MAP DATE: 18 JUNE 2025	MAPPED BY: K7OPNDJM
	PROCESSED BY: K7OPNDJM
MAP SCALE: 1:2,000	
IMAGERY DATE: 04 JUNE 2025	
© 2025 MAXAR TECHNOLOGIES	MAP FILE NAME: SL_03_SLH_20250617_CS

HYDROGRAPHIC SURVEY

U.S. ARMY ENGINEER DISTRICT  
CORPS OF ENGINEERS  
WILMINGTON, NORTH CAROLINA

Silver Lake Harbor  
Map 2 of 2

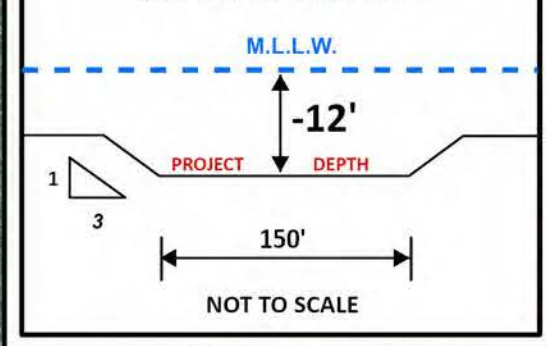
OCRAOKE, NORTH CAROLINA



### WAYPOINTS

Date	Project	DDM_X	DDM_Y
2025-06-17	SLH - Waypoint 01	075° 59.74' W	35° 5.468' N
2025-06-17	SLH - Waypoint 02	075° 59.519' W	35° 6.022' N
2025-06-17	SLH - Waypoint 03	075° 59.506' W	35° 6.261' N

### TYPICAL SECTION



1:2,000

200 100 0 200 400 600 800 Feet

### NOTES:

- ELEVATIONS ARE IN FEET AND REFER TO NOAA'S REPORTED MEAN LOWER LOW WATER (MLLW) RELATIVE TO THE 1983-2001 TIDAL EPOCH.
- PROJECT SURVEYED WITH DISTRICT SURVEY VESSEL "KNOWLTON" USING RTK GPS HORIZONTAL POSITIONING EQUIPMENT AND 200 KHZ SOUNDING EQUIPMENT.
- HORIZONTAL DATUM NAD 1983. VERTICAL DATUM M.L.L.W..
- TIDE GAGE LOCATED AT: NPS BOAT RAMP. USE OF TIDE VALUES FOR THIS GAGE ARE RESTRICTED TO QUALITY ASSURANCE PURPOSES FOR VERIFICATION OF RTK TIDES. THE WILMINGTON DISTRICT WILL ONLY USE STAFF GAGE TIDAL VALUES FOR FINAL MAPPING AND QUANTITY CALCULATIONS IF RTK GPS IS UNAVAILABLE AT THE TIME OF SURVEY.
- THIS PROJECT WAS DESIGNED BY THE WILMINGTON DISTRICT OF THE U.S. ARMY CORPS OF ENGINEERS. THE INITIALS AND SIGNATURES AND REGISTRATION DESIGNATIONS OF INDIVIDUALS APPEAR ON THESE PROJECT DOCUMENTS WITHIN THE SCOPE OF THEIR EMPLOYMENT AS REQUIRED BY ERT110-1-8152.
- THE INFORMATION DEPICTED ON THIS SURVEY MAP REPRESENTS THE RESULTS OF SURVEYS MADE ON THE DATES INDICATED AND CAN ONLY BE CONSIDERED AS INDICATING THE GENERAL CONDITIONS EXISTING AT THAT TIME. THESE CONDITIONS ARE SUBJECT TO RAPID CHANGE DUE TO SHOALING EVENTS. A PRUDENT MARINER SHOULD NOT RELY EXCLUSIVELY ON THE INFORMATION PROVIDED HERE. REQUIRED BY 33 CFR 209.325
- NAVIGATION AIDS LOCATED WITH DISTRICT SURVEY VESSEL. ACCURACY +/- 3 METERS.
- FOR THE MOST UP TO DATE INFORMATION PLEASE CHECK OUR WEBSITE AT: WWW.SAW.USACE.ARMY.MIL