



**US Army Corps  
of Engineers®**  
Wilmington District

**CESAW-OPS**

**3 August 2018**

**PUBLIC NOTICE**

**EMERGENCY DREDGING ACTION**  
**BULKHEAD CHANNEL**  
**Beaufort Harbor, NC**

**TO WHOM IT MAY CONCERN:**

The U.S. Army Corps of Engineers, Wilmington District (Corps), has determined that conditions exist in Bulkhead Channel, Range 1 (entrance channel leading to Beaufort Harbor docks) that pose an immediate threat to navigation (Figures 1 and 2). The emergency conditions require the immediate removal of approximately 5,300 cubic yards of fine-grained sandy material and will take approximately 1 week to complete. Removal of the material will allow the safe passage of vessels to and from the harbor. Emergency dredging will be performed to a depth of -15 feet +2 feet overdepth in the identified area.

Work will be performed by a Government-owned special purpose hopper dredge and dredged material will be placed in the approved nearshore placement areas (Figure 1). No alternatives to performing the work by Government-owned vessel are available at this time. Work could commence as early as 8 August 2018.

The procedures outlined in the 1986 Memorandum of Agreement between the State of North Carolina Division of Environmental Quality and the U.S. Army Corps of Engineers, Wilmington District, were followed to obtain all necessary clearances for the emergency action to take place.

This public notice is being distributed to all known interested persons for informational purposes only. For further information, please contact Ms. Emily Hughes, telephone (910) 251-4635.

This public notice satisfies the notification requirements of Executive Order 11988 and Sections 401 and 404 of the Clean Water Act.

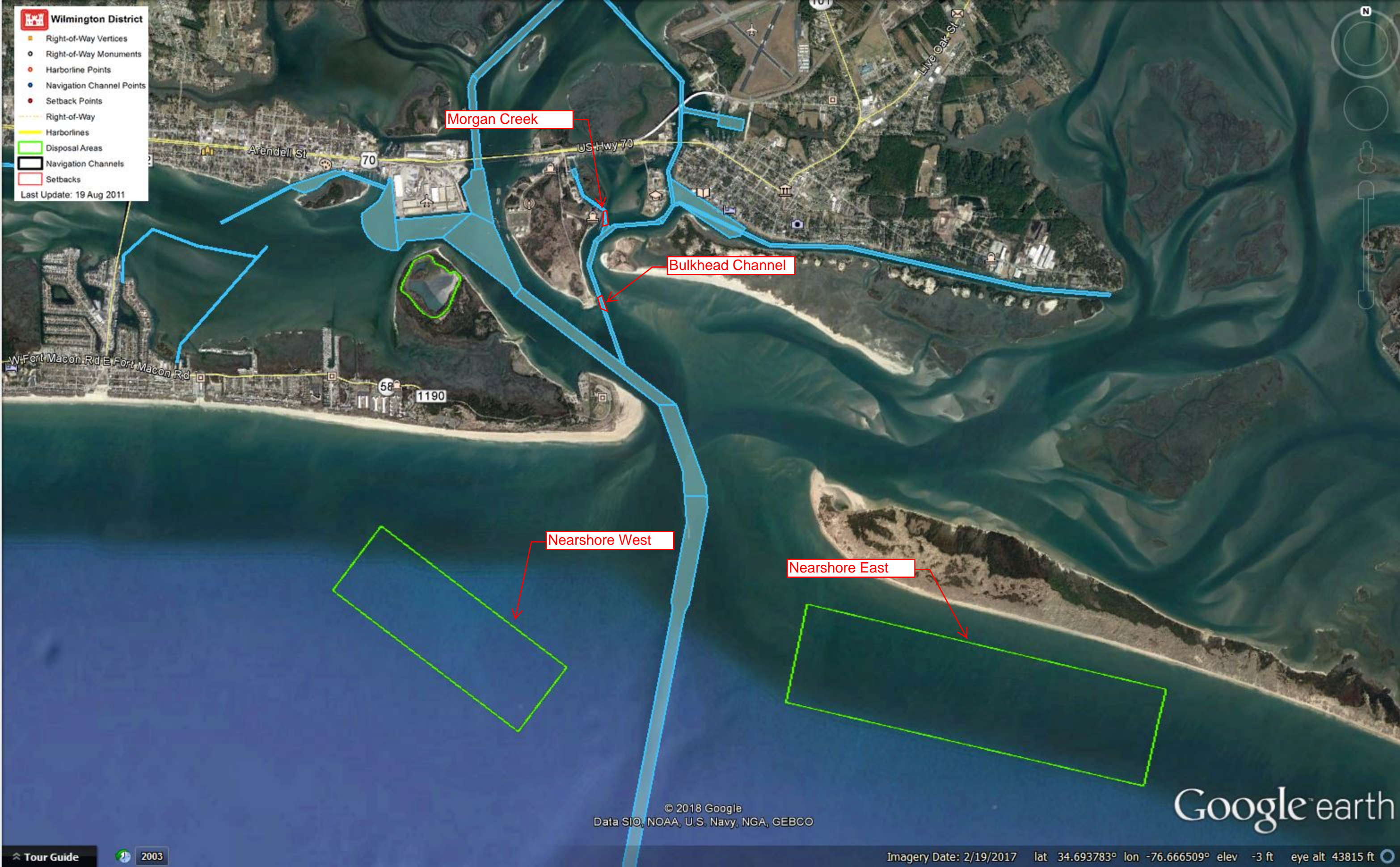
Daniel Brown  
Chief, Operations Division



**Wilmington District**

- Right-of-Way Vertices
- Right-of-Way Monuments
- Harborline Points
- Navigation Channel Points
- Setback Points
- Right-of-Way
- Harborlines
- Disposal Areas
- Navigation Channels
- Setbacks

Last Update: 19 Aug 2011



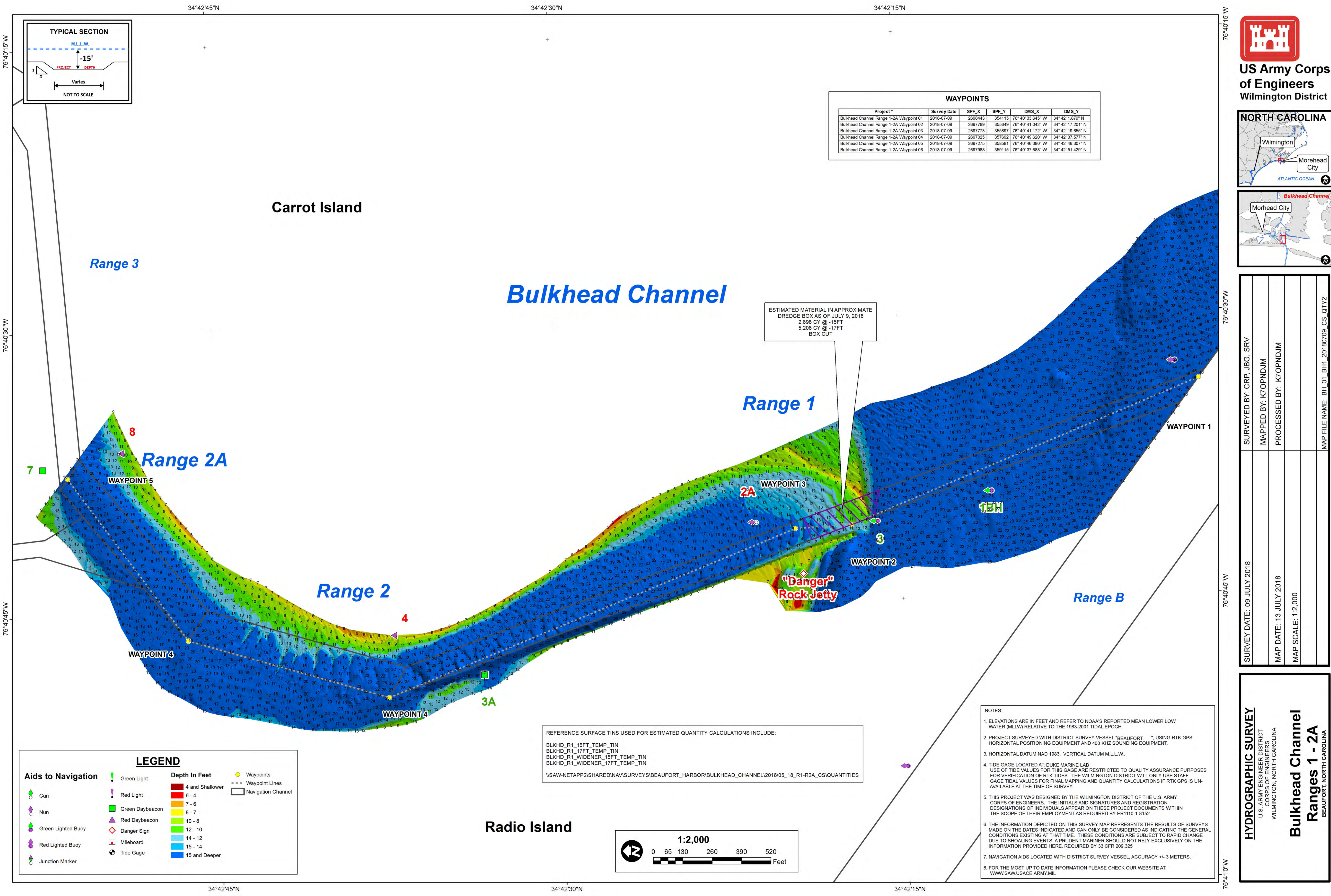
Morgan Creek

Bulkhead Channel

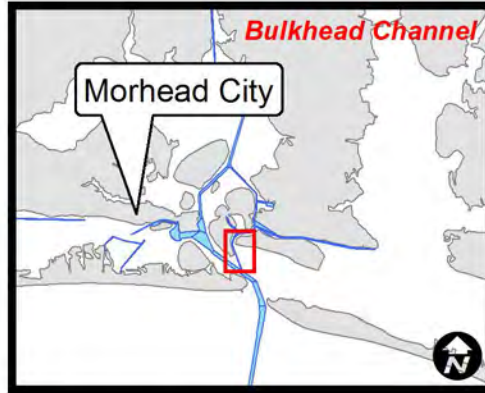
Nearshore West

Nearshore East





US Army Corps  
of Engineers  
Wilmington District



SURVEYED BY: CRP, JBG, SRV	SURVEY DATE: 09 JULY 2018
MAPPED BY: KTOPNDJM	MAP DATE: 13 JULY 2018
PROCESSED BY: KTOPNDJM	MAP SCALE: 1:2,000
MAP FILE NAME: BH_01_BH1_20180709_CS_QTY2	

HYDROGRAPHIC SURVEY

U.S. ARMY ENGINEER DISTRICT  
CORPS OF ENGINEERS  
WILMINGTON, NORTH CAROLINA

Bulkhead Channel  
Ranges 1 - 2A

BEAUFORT, NORTH CAROLINA

WAYPOINTS					
Project *	Survey Date	SPF_X	SPF_Y	DMS_X	DMS_Y
Bulkhead Channel Range 1-2A Waypoint 01	2018-07-09	2698443	354115	76° 40' 33.645" W	34° 42' 1.879" N
Bulkhead Channel Range 1-2A Waypoint 02	2018-07-09	2697789	355649	76° 40' 41.042" W	34° 42' 17.201" N
Bulkhead Channel Range 1-2A Waypoint 03	2018-07-09	2697773	355697	76° 40' 41.172" W	34° 42' 19.657" N
Bulkhead Channel Range 1-2A Waypoint 04	2018-07-09	2697025	357692	76° 40' 49.620" W	34° 42' 37.577" N
Bulkhead Channel Range 1-2A Waypoint 05	2018-07-09	2697275	356581	76° 40' 46.380" W	34° 42' 46.307" N
Bulkhead Channel Range 1-2A Waypoint 06	2018-07-09	2697988	359115	76° 40' 37.688" W	34° 42' 51.428" N

ESTIMATED MATERIAL IN APPROXIMATE  
DREDGE BOX AS OF JULY 9, 2018  
2,898 CY @ -15FT  
5,208 CY @ -17FT  
BOX CUT

REFERENCE SURFACE TINS USED FOR ESTIMATED QUANTITY CALCULATIONS INCLUDE:  
BLKHD\_R1\_15FT\_TEMP\_TIN  
BLKHD\_R1\_17FT\_TEMP\_TIN  
BLKHD\_R1\_WIDENER\_15FT\_TEMP\_TIN  
BLKHD\_R1\_WIDENER\_17FT\_TEMP\_TIN  
\\SAW-NETAPP2\SHARED\NAV\SURVEYS\BIEAUFORT\_HARBOR\BULKHEAD\_CHANNEL\2018\05\_18\_R1-R2A\_CS\QUANTITIES

- NOTES:
- ELEVATIONS ARE IN FEET AND REFER TO NOAA'S REPORTED MEAN LOWER LOW WATER (MLLW) RELATIVE TO THE 1983-2001 TIDAL EPOCH.
  - PROJECT SURVEYED WITH DISTRICT SURVEY VESSEL "BEAUFORT", USING RTK GPS HORIZONTAL POSITIONING EQUIPMENT AND 400 KHZ SOUNDING EQUIPMENT.
  - HORIZONTAL DATUM NAD 1983. VERTICAL DATUM M.L.L.W.
  - TIDE GAGE LOCATED AT DUKE MARINE LAB. USE OF TIDE VALUES FOR THIS GAGE ARE RESTRICTED TO QUALITY ASSURANCE PURPOSES FOR VERIFICATION OF RTK TIDES. THE WILMINGTON DISTRICT WILL ONLY USE STAFF GAGE TIDE VALUES FOR FINAL MAPPING AND QUANTITY CALCULATIONS IF RTK GPS IS UNAVAILABLE AT THE TIME OF SURVEY.
  - THIS PROJECT WAS DESIGNED BY THE WILMINGTON DISTRICT OF THE U.S. ARMY CORPS OF ENGINEERS. THE INITIALS AND SIGNATURES AND REGISTRATION DESIGNATIONS OF INDIVIDUALS APPEAR ON THESE PROJECT DOCUMENTS WITHIN THE SCOPE OF THEIR EMPLOYMENT AS REQUIRED BY ER1110-1-8152.
  - THE INFORMATION DEPICTED ON THIS SURVEY MAP REPRESENTS THE RESULTS OF SURVEYS MADE ON THE DATES INDICATED AND CAN ONLY BE CONSIDERED AS INDICATING THE GENERAL CONDITIONS EXISTING AT THAT TIME. THESE CONDITIONS ARE SUBJECT TO RAPID CHANGE DUE TO SHOALING EVENTS. A PRUDENT MARINER SHOULD NOT RELY EXCLUSIVELY ON THE INFORMATION PROVIDED HERE. REQUIRED BY 33 CFR 209.325
  - NAVIGATION AIDS LOCATED WITH DISTRICT SURVEY VESSEL, ACCURACY +/- 3 METERS.
  - FOR THE MOST UP TO DATE INFORMATION PLEASE CHECK OUR WEBSITE AT: [WWW.SAW.USACE.ARMY.MIL](http://WWW.SAW.USACE.ARMY.MIL)