

US Army Corps  
of Engineers  
Wilmington District

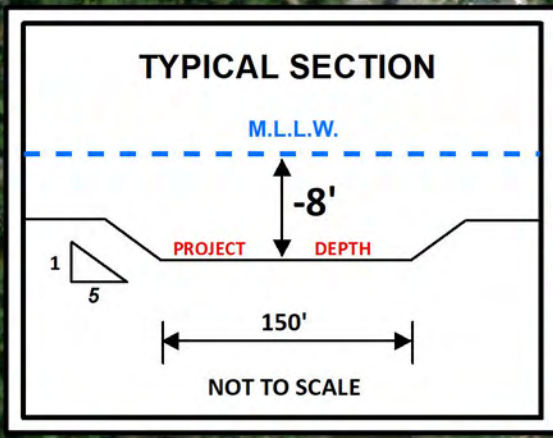
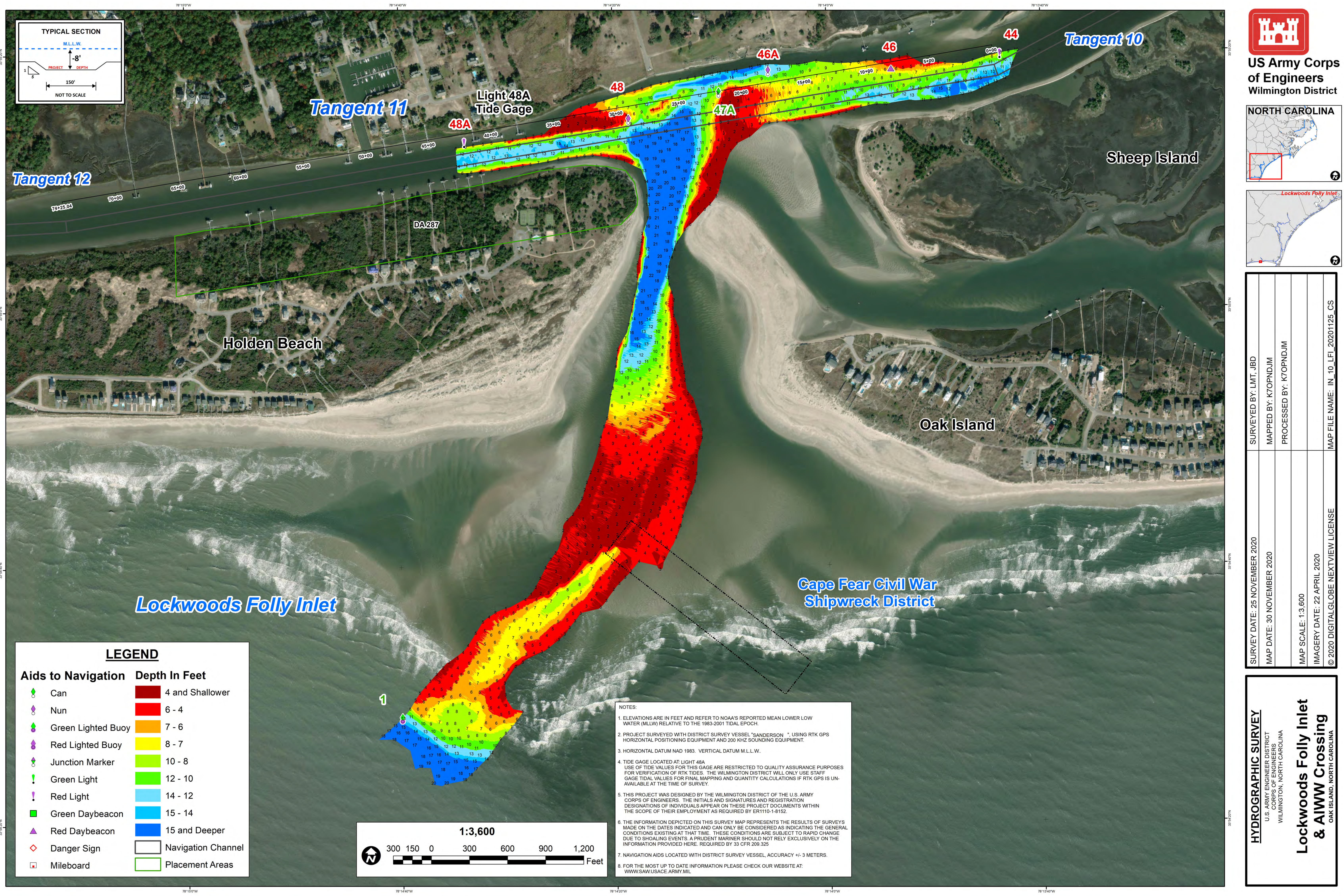


SURVEY DATE: 25 NOVEMBER & 17 DECEMBER 2020	SURVEYED BY: LMT, JBD
MAP DATE: 18 DECEMBER 2020	MAPPED BY: K7OPNLAC
	PROCESSED BY: K7OPNDJM & K7OPNLAC
MAP SCALE: 1:3,600	
IMAGERY DATE: 16 DECEMBER 2020	
© 2020 DIGITAL GLOBE NEXTVIEW LICENSE	MAP FILE NAME: IN_10_LFI_20201217_BD

**HYDROGRAPHIC SURVEY**  
U.S. ARMY ENGINEER DISTRICT  
CORPS OF ENGINEERS  
WILMINGTON, NORTH CAROLINA

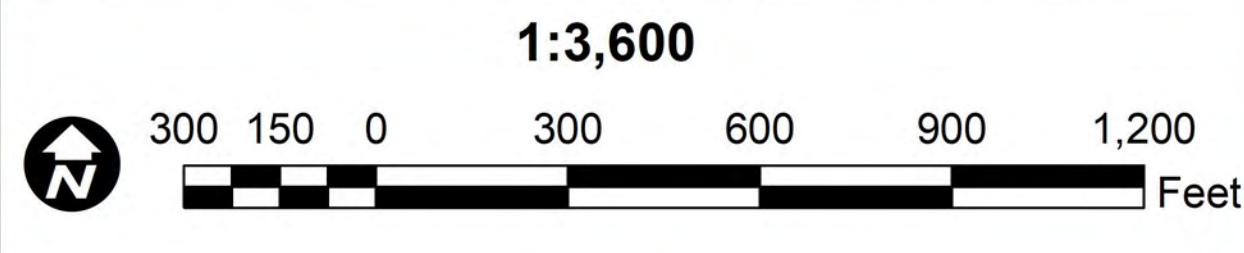
**Lockwoods Folly Inlet  
& AIWW Crossing**  
OAK ISLAND, NORTH CAROLINA





**LEGEND**

Aids to Navigation	Depth In Feet
Can	4 and Shallower
Nun	6 - 4
Green Lighted Buoy	7 - 6
Red Lighted Buoy	8 - 7
Junction Marker	10 - 8
Green Light	12 - 10
Red Light	14 - 12
Green Daybeacon	15 - 14
Red Daybeacon	15 and Deeper
Danger Sign	Navigation Channel
Mileboard	Placement Areas



**NOTES:**

- ELEVATIONS ARE IN FEET AND REFER TO NOAA'S REPORTED MEAN LOWER LOW WATER (MLLW) RELATIVE TO THE 1983-2001 TIDAL EPOCH.
- PROJECT SURVEYED WITH DISTRICT SURVEY VESSEL "SANDERSON", USING RTK GPS HORIZONTAL POSITIONING EQUIPMENT AND 200 KHZ SOUNDING EQUIPMENT.
- HORIZONTAL DATUM NAD 1983. VERTICAL DATUM M.L.L.W.
- TIDE GAGE LOCATED AT LIGHT 48A. USE OF TIDE VALUES FOR THIS GAGE ARE RESTRICTED TO QUALITY ASSURANCE PURPOSES FOR VERIFICATION OF RTK TIDES. THE WILMINGTON DISTRICT WILL ONLY USE STAFF GAGE TIDE VALUES FOR FINAL MAPPING AND QUANTITY CALCULATIONS IF RTK GPS IS UNAVAILABLE AT THE TIME OF SURVEY.
- THIS PROJECT WAS DESIGNED BY THE WILMINGTON DISTRICT OF THE U.S. ARMY CORPS OF ENGINEERS. THE INITIALS AND SIGNATURES AND REGISTRATION DESIGNATIONS OF INDIVIDUALS APPEAR ON THESE PROJECT DOCUMENTS WITHIN THE SCOPE OF THEIR EMPLOYMENT AS REQUIRED BY ER1110-1-8152.
- THE INFORMATION DEPICTED ON THIS SURVEY MAP REPRESENTS THE RESULTS OF SURVEYS MADE ON THE DATES INDICATED AND CAN ONLY BE CONSIDERED AS INDICATING THE GENERAL CONDITIONS EXISTING AT THAT TIME. THESE CONDITIONS ARE SUBJECT TO RAPID CHANGE DUE TO SHOALING EVENTS. A PRUDENT MARINER SHOULD NOT RELY EXCLUSIVELY ON THE INFORMATION PROVIDED HERE. REQUIRED BY 33 CFR 209.325
- NAVIGATION AIDS LOCATED WITH DISTRICT SURVEY VESSEL, ACCURACY +/- 3 METERS.
- FOR THE MOST UP TO DATE INFORMATION PLEASE CHECK OUR WEBSITE AT: [WWW.SAW.USACE.ARMY.MIL](http://WWW.SAW.USACE.ARMY.MIL)

**US Army Corps of Engineers**  
Wilmington District

**NORTH CAROLINA**

**Lockwoods Folly Inlet**

SURVEY DATE: 25 NOVEMBER 2020	SURVEYED BY: LMT, JBD
MAP DATE: 30 NOVEMBER 2020	MAPPED BY: K7OPNDJIM
MAP SCALE: 1:3,600	PROCESSED BY: K7OPNDJIM
IMAGERY DATE: 22 APRIL 2020	
© 2020 DIGITAL GLOBE NEXTVIEW LICENSE	MAP FILE NAME: IN_10_LFI_20201125_CS

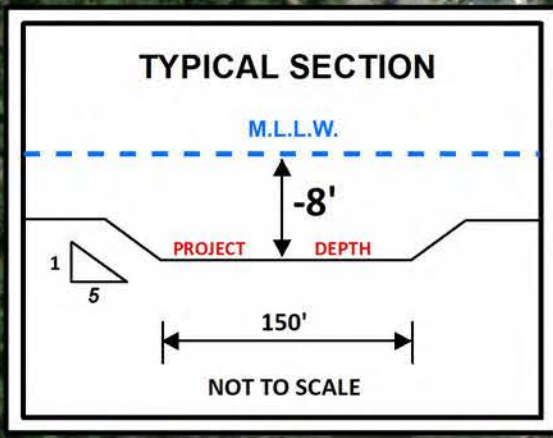
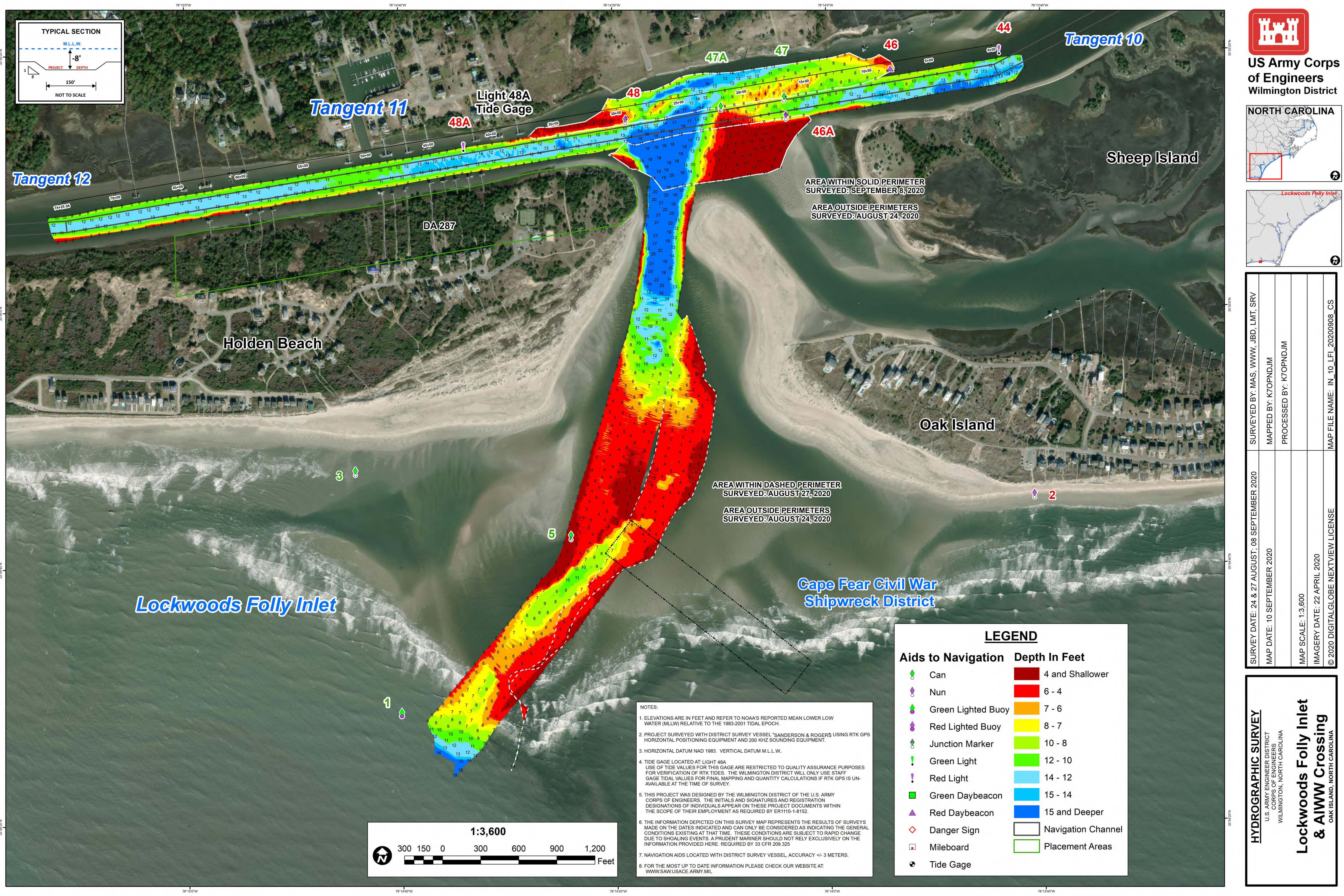
**HYDROGRAPHIC SURVEY**

U.S. ARMY ENGINEER DISTRICT  
CORPS OF ENGINEERS  
WILMINGTON, NORTH CAROLINA

**Lockwoods Folly Inlet  
& AIWW Crossing**

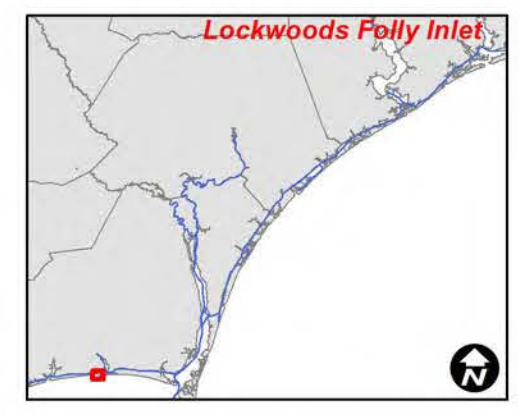
OAK ISLAND, NORTH CAROLINA





**US Army Corps of Engineers**  
Wilmington District

**NORTH CAROLINA**



SURVEY DATE: 24 & 27 AUGUST; 08 SEPTEMBER 2020	SURVEYED BY: MAS, WWW, JBD, LMT, SRV
MAP DATE: 10 SEPTEMBER 2020	MAPPED BY: K7OPNDJM
	PROCESSED BY: K7OPNDJM
MAP SCALE: 1:3,600	
IMAGERY DATE: 22 APRIL 2020	
© 2020 DIGITAL GLOBE NEXTVIEW LICENSE	MAP FILE NAME: IN_10_LFI_20200908_CS

**HYDROGRAPHIC SURVEY**

U.S. ARMY ENGINEER DISTRICT  
CORPS OF ENGINEERS  
WILMINGTON, NORTH CAROLINA

**Lockwoods Folly Inlet  
& AIWW Crossing**

OAK ISLAND, NORTH CAROLINA

**NOTES:**

1. ELEVATIONS ARE IN FEET AND REFER TO NOAA'S REPORTED MEAN LOWER LOW WATER (MLLW) RELATIVE TO THE 1983-2001 TIDAL EPOCH.

2. PROJECT SURVEYED WITH DISTRICT SURVEY VESSEL "SANDERSON & ROGERS" USING RTK GPS HORIZONTAL POSITIONING EQUIPMENT AND 200 KHZ SOUNDING EQUIPMENT.

3. HORIZONTAL DATUM NAD 1983. VERTICAL DATUM M.L.L.W.

4. TIDE GAGE LOCATED AT LIGHT 48A. USE OF TIDE VALUES FOR THIS GAGE ARE RESTRICTED TO QUALITY ASSURANCE PURPOSES FOR VERIFICATION OF RTK TIDES. THE WILMINGTON DISTRICT WILL ONLY USE STAFF GAGE TIDE VALUES FOR FINAL MAPPING AND QUANTITY CALCULATIONS IF RTK GPS IS UNAVAILABLE AT THE TIME OF SURVEY.

5. THIS PROJECT WAS DESIGNED BY THE WILMINGTON DISTRICT OF THE U.S. ARMY CORPS OF ENGINEERS. THE INITIALS AND SIGNATURES AND REGISTRATION DESIGNATIONS OF INDIVIDUALS APPEAR ON THESE PROJECT DOCUMENTS WITHIN THE SCOPE OF THEIR EMPLOYMENT AS REQUIRED BY ER1110-1-8152.

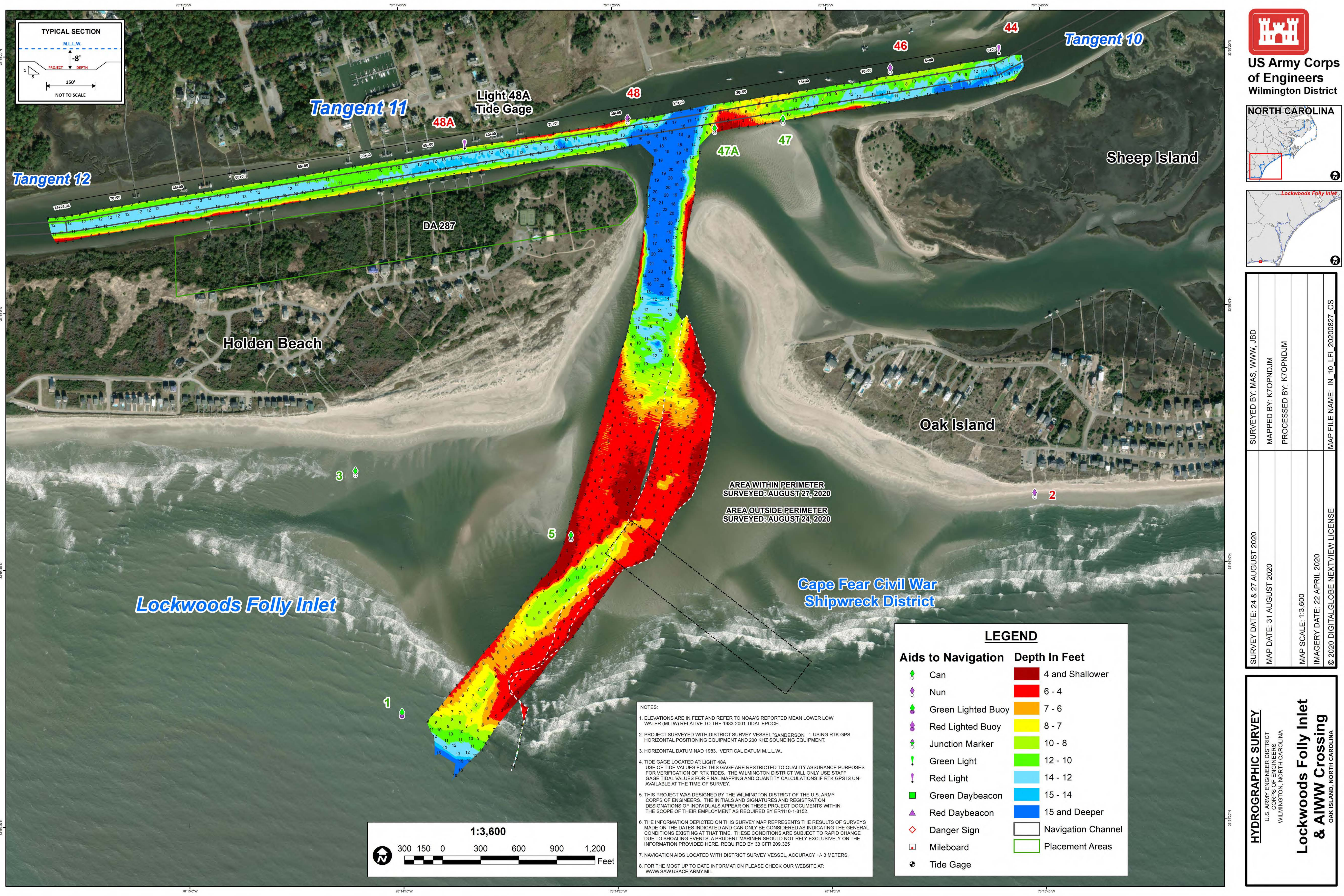
6. THE INFORMATION DEPICTED ON THIS SURVEY MAP REPRESENTS THE RESULTS OF SURVEYS MADE ON THE DATES INDICATED AND CAN ONLY BE CONSIDERED AS INDICATING THE GENERAL CONDITIONS EXISTING AT THAT TIME. THESE CONDITIONS ARE SUBJECT TO RAPID CHANGE DUE TO SHOALING EVENTS. A PRUDENT MARINER SHOULD NOT RELY EXCLUSIVELY ON THE INFORMATION PROVIDED HERE, REQUIRED BY 33 CFR 209.325.

7. NAVIGATION AIDS LOCATED WITH DISTRICT SURVEY VESSEL, ACCURACY +/- 3 METERS.

8. FOR THE MOST UP TO DATE INFORMATION PLEASE CHECK OUR WEBSITE AT: [WWW.SAW.USACE.ARMY.MIL](http://WWW.SAW.USACE.ARMY.MIL)

LEGEND	
Aids to Navigation	Depth In Feet
Green Lighted Buoy	4 and Shallower
Red Lighted Buoy	6 - 4
Junction Marker	7 - 6
Green Light	8 - 7
Red Light	10 - 8
Green Daybeacon	12 - 10
Red Daybeacon	14 - 12
Danger Sign	15 - 14
Mileboard	15 and Deeper
Tide Gage	Navigation Channel
	Placement Areas



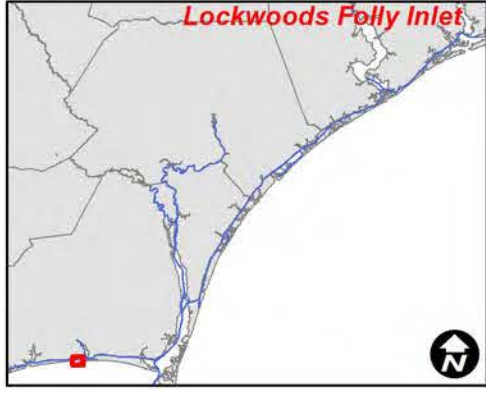




**US Army Corps  
of Engineers**  
Wilmington District

**NORTH CAROLINA**





SURVEY DATE: 24 & 27 AUGUST 2020	SURVEYED BY: MAS, WWW, JBD
MAP DATE: 31 AUGUST 2020	MAPPED BY: K7OPNDJM
	PROCESSED BY: K7OPNDJM
MAP SCALE: 1:3,600	
IMAGERY DATE: 22 APRIL 2020	
© 2020 DIGITAL GLOBE NEXTVIEW LICENSE	MAP FILE NAME: IN_10_LFI_20200827_CS

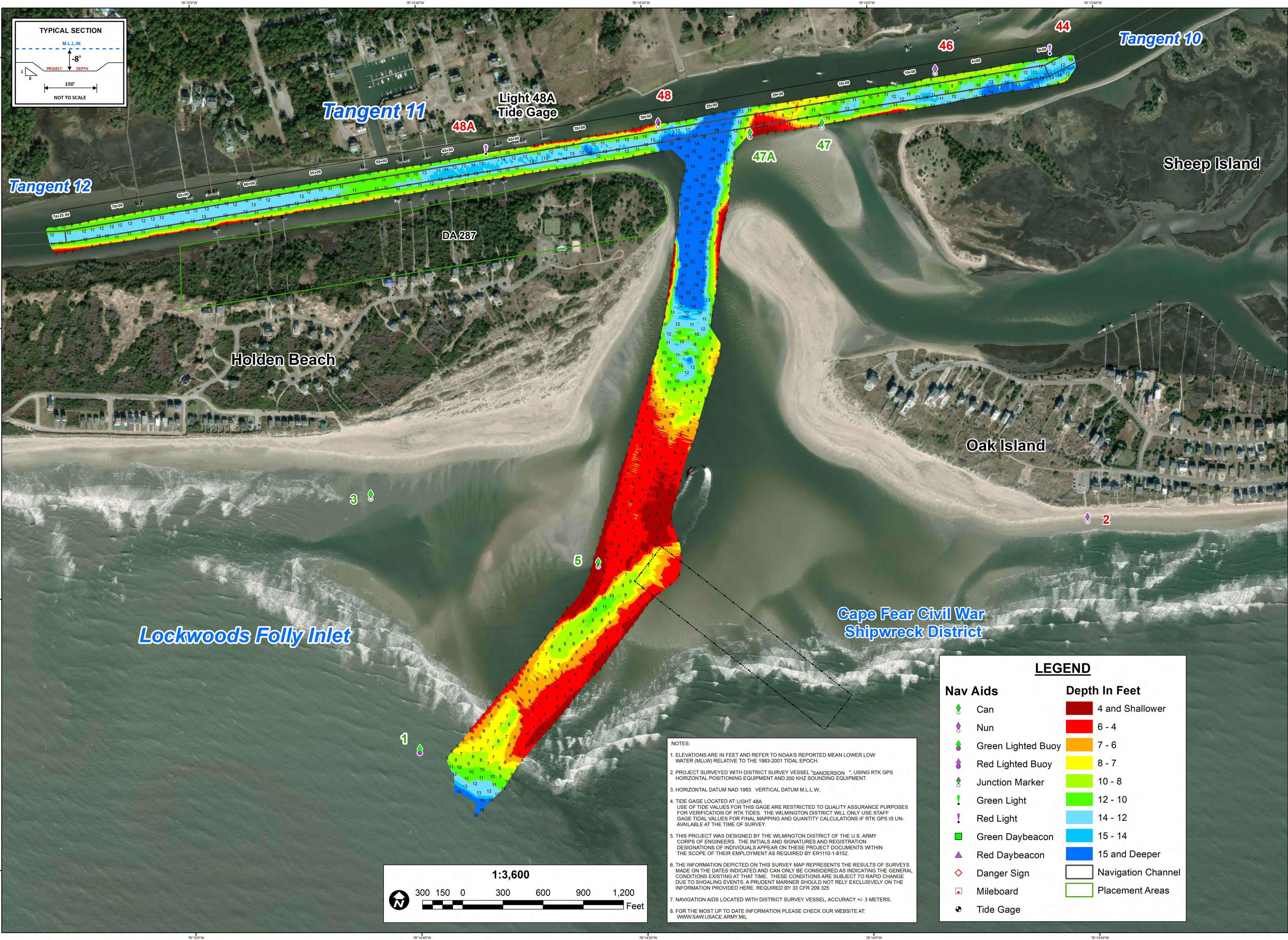
**HYDROGRAPHIC SURVEY**

U.S. ARMY ENGINEER DISTRICT  
CORPS OF ENGINEERS  
WILMINGTON, NORTH CAROLINA

**Lockwoods Folly Inlet  
& AIWW Crossing**

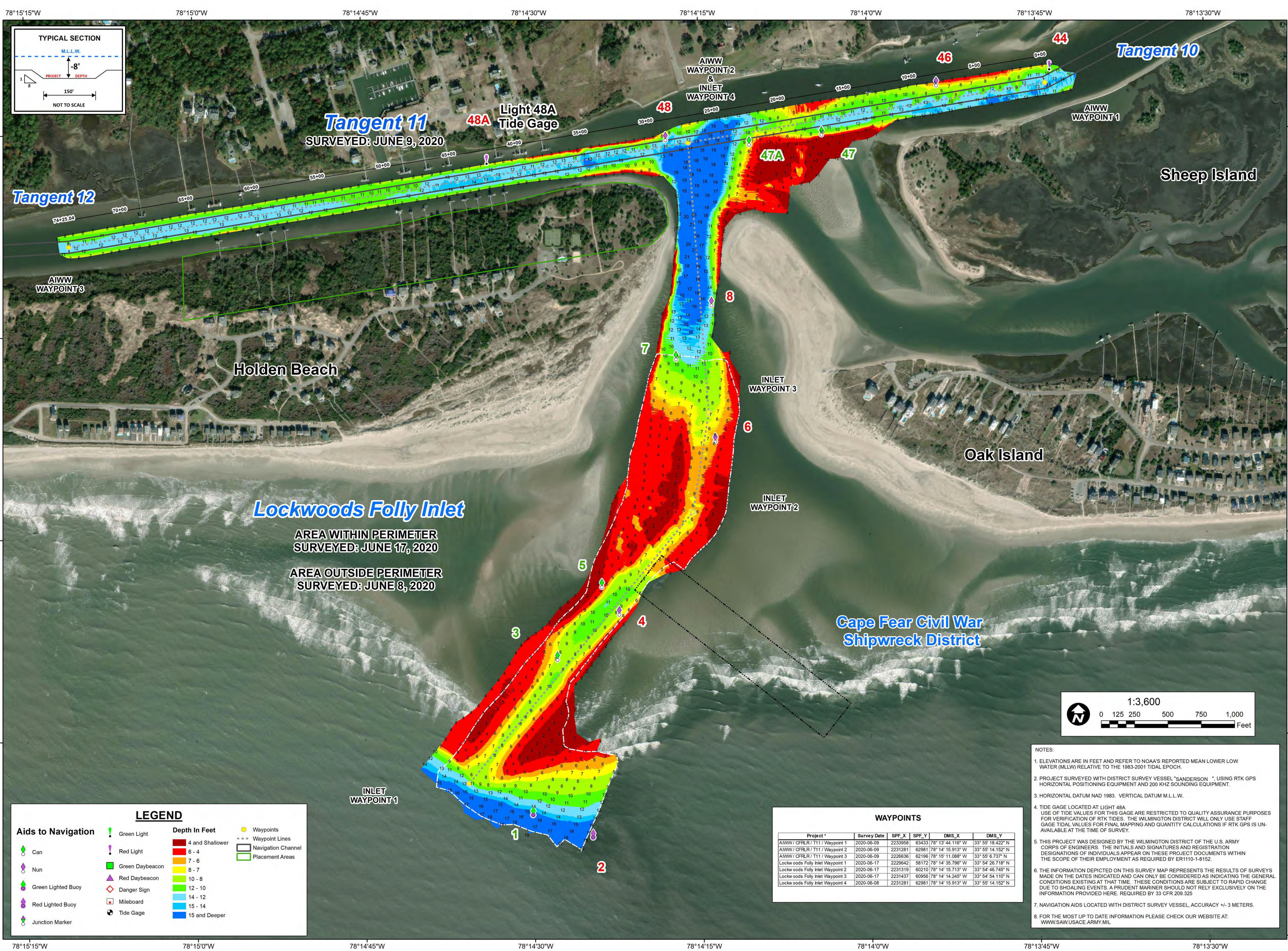
OAK ISLAND, NORTH CAROLINA





SURVEY DATE: 24 AUGUST 2020	SURVEYED BY: MAS, WWW
MAP DATE: 25 AUGUST 2020	MAPPED BY: K7OPNDJM
	PROCESSED BY: K7OPNDJM
MAP SCALE: 1:3,600	
IMAGERY DATE: 22 APRIL 2020	
© 2020 DIGITALGLOBE NEXTVIEW LICENSE	MAP FILE NAME: IN_10_LFI_20200824_CS





**US Army Corps  
of Engineers  
Wilmington District**



SURVEY DATE: 08-09 & 17 JUNE 2020	SURVEYED BY: WJC, JBD
	MAPPED BY: KTOPNDJIM
MAP DATE: 18 JUNE 2020	PROCESSED BY: KTOPNDJIM
MAP SCALE: 1:3,600	
IMAGERY DATE: 22 APRIL 2020	
© 2020 DIGITALGLOBE NEXTVIEW LICENSE	
MAP FILE NAME: IN_10_LFI_20200617_AD	

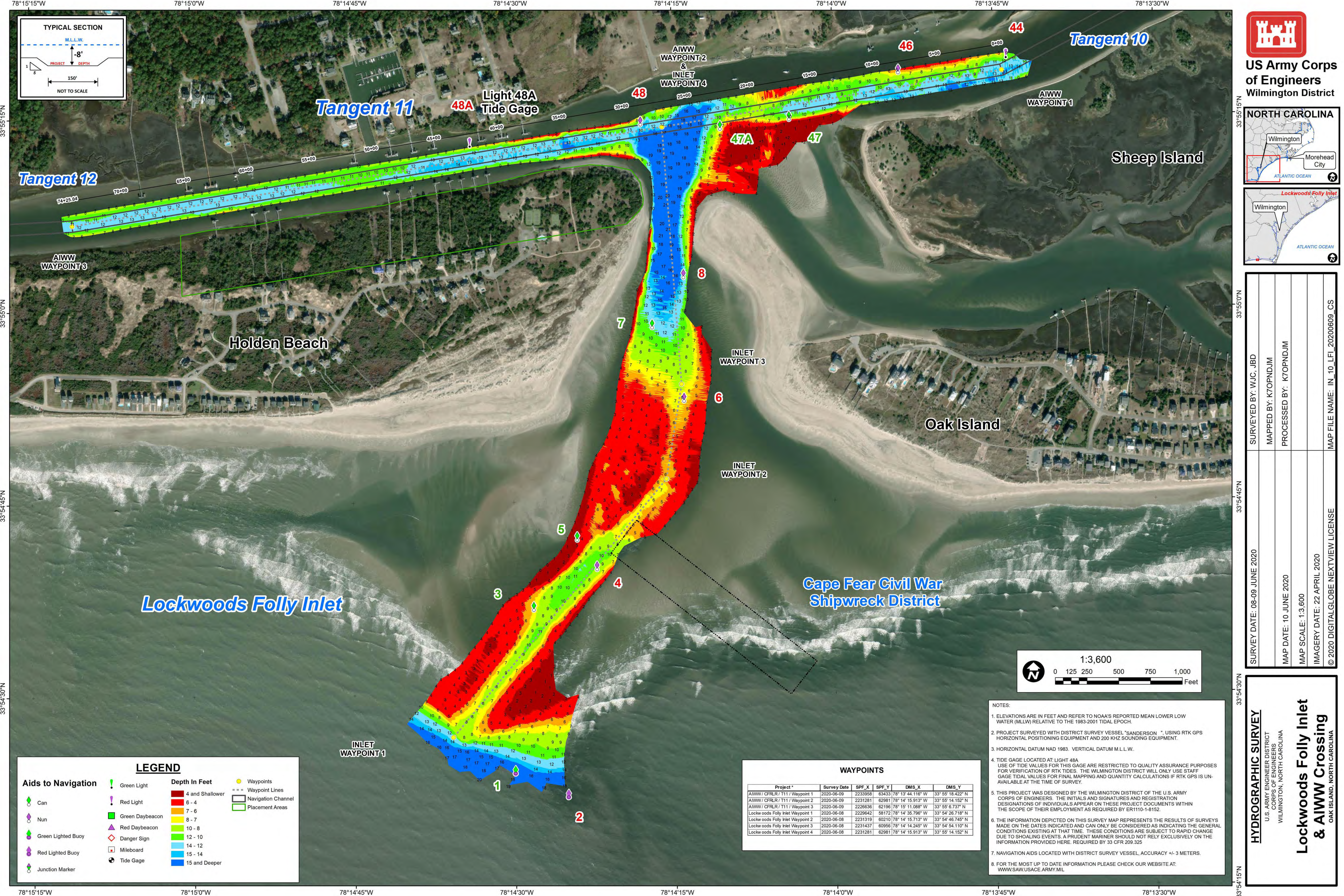
# HYDROGRAPHIC SURVEY

U.S. ARMY ENGINEER DISTRICT  
CORPS OF ENGINEERS  
WILMINGTON, NORTH CAROLINA

# Lockwoods Folly Inlet & AIWW Crossing

OAK ISLAND, NORTH CAROLINA







**US Army Corps  
of Engineers**  
Wilmington District

**NORTH CAROLINA**



Wilmington  
Morehead City  
ATLANTIC OCEAN



Lockwoods Folly Inlet  
Wilmington  
ATLANTIC OCEAN

SURVEY DATE: 08-09 JUNE 2020	SURVEYED BY: WJC, JBD
MAP DATE: 10 JUNE 2020	MAPPED BY: KTOPNDJM
MAP SCALE: 1:3,600	PROCESSED BY: KTOPNDJM
IMAGERY DATE: 22 APRIL 2020	
© 2020 DIGITALGLOBE NEXTVIEW LICENSE	MAP FILE NAME: IN_10_LFI_20200609_CS

**HYDROGRAPHIC SURVEY**

U.S. ARMY ENGINEER DISTRICT  
CORPS OF ENGINEERS  
WILMINGTON, NORTH CAROLINA

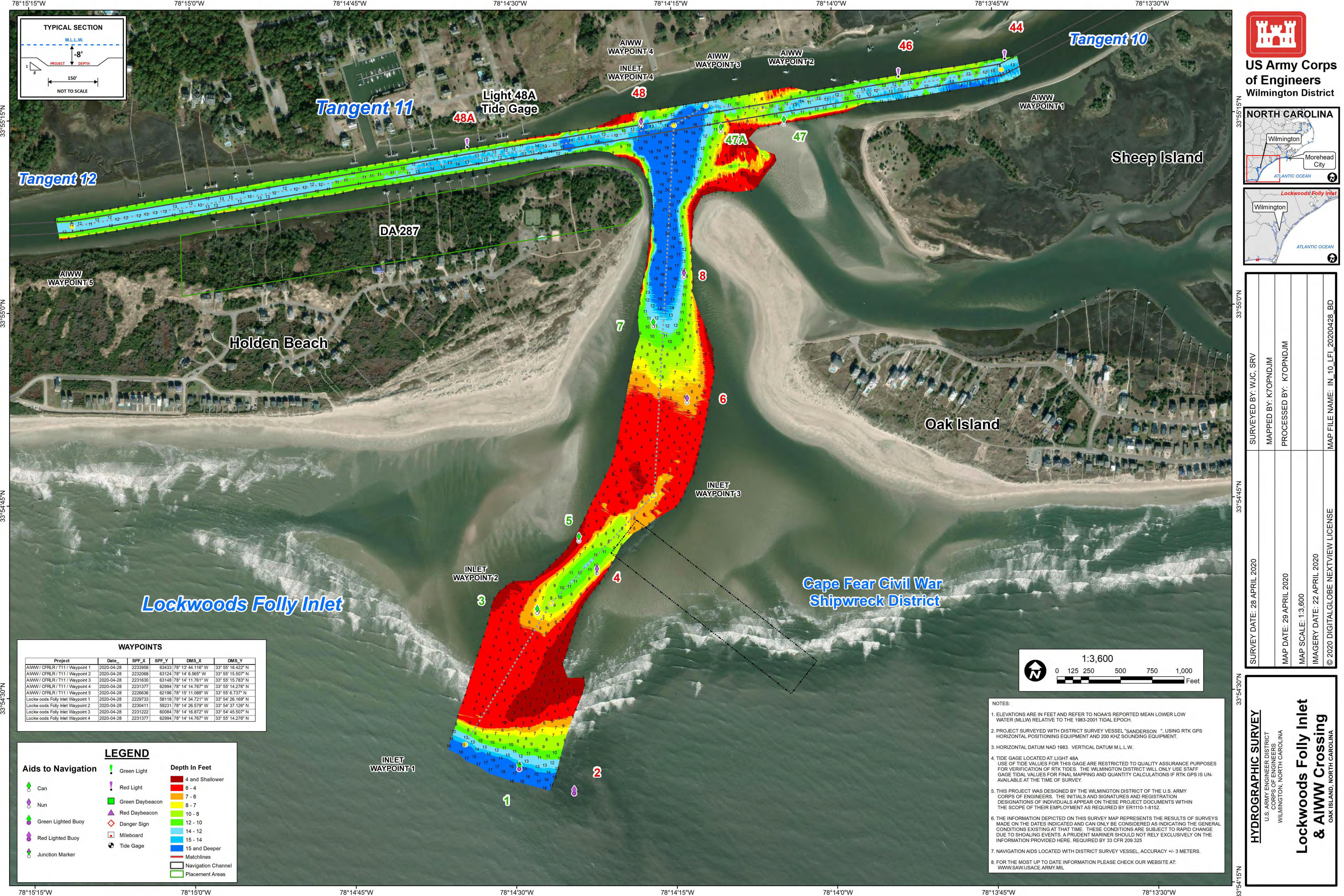
**Lockwoods Folly Inlet  
& AIWW Crossing**

OAK ISLAND, NORTH CAROLINA

NOTES:

- ELEVATIONS ARE IN FEET AND REFER TO NOAA'S REPORTED MEAN LOWER LOW WATER (MLLW) RELATIVE TO THE 1983-2001 TIDAL EPOCH.
- PROJECT SURVEYED WITH DISTRICT SURVEY VESSEL "SANDERSON", USING RTK GPS HORIZONTAL POSITIONING EQUIPMENT AND 200 KHZ SOUNDING EQUIPMENT.
- HORIZONTAL DATUM NAD 1983. VERTICAL DATUM M.L.L.W.
- TIDE GAGE LOCATED AT: LIGHT 48A  
USE OF TIDE VALUES FOR THIS GAGE ARE RESTRICTED TO QUALITY ASSURANCE PURPOSES FOR VERIFICATION OF RTK TIDES. THE WILMINGTON DISTRICT WILL ONLY USE STAFF GAGE TIDAL VALUES FOR FINAL MAPPING AND QUANTITY CALCULATIONS IF RTK GPS IS UNAVAILABLE AT THE TIME OF SURVEY.
- THIS PROJECT WAS DESIGNED BY THE WILMINGTON DISTRICT OF THE U.S. ARMY CORPS OF ENGINEERS. THE INITIALS AND SIGNATURES AND REGISTRATION DESIGNATIONS OF INDIVIDUALS APPEAR ON THESE PROJECT DOCUMENTS WITHIN THE SCOPE OF THEIR EMPLOYMENT AS REQUIRED BY ER1110-1-8152.
- THE INFORMATION DEPICTED ON THIS SURVEY MAP REPRESENTS THE RESULTS OF SURVEYS MADE ON THE DATES INDICATED AND CAN ONLY BE CONSIDERED AS INDICATING THE GENERAL CONDITIONS EXISTING AT THAT TIME. THESE CONDITIONS ARE SUBJECT TO RAPID CHANGE DUE TO SHOALING EVENTS. A PRUDENT MARINER SHOULD NOT RELY EXCLUSIVELY ON THE INFORMATION PROVIDED HERE. REQUIRED BY 33 CFR 209.325
- NAVIGATION AIDS LOCATED WITH DISTRICT SURVEY VESSEL, ACCURACY +/- 3 METERS.
- FOR THE MOST UP TO DATE INFORMATION PLEASE CHECK OUR WEBSITE AT: [WWW.SAW.USACE.ARMY.MIL](http://WWW.SAW.USACE.ARMY.MIL)







**US Army Corps  
of Engineers**  
Wilmington District

**NORTH CAROLINA**



Wilmington  
Morehead City  
ATLANTIC OCEAN

**Lockwoods Folly Inlet**



Wilmington  
ATLANTIC OCEAN

SURVEY DATE: 28 APRIL 2020	SURVEYED BY: WJC, SRV
MAP DATE: 29 APRIL 2020	MAPPED BY: KTOPNDJM
MAP SCALE: 1:3,600	PROCESSED BY: KTOPNDJM
IMAGERY DATE: 22 APRIL 2020	
© 2020 DIGITALGLOBE NEXTVIEW LICENSE	MAP FILE NAME: IN_10_LFI_20200428_BD

**HYDROGRAPHIC SURVEY**

U.S. ARMY ENGINEER DISTRICT  
CORPS OF ENGINEERS  
WILMINGTON, NORTH CAROLINA

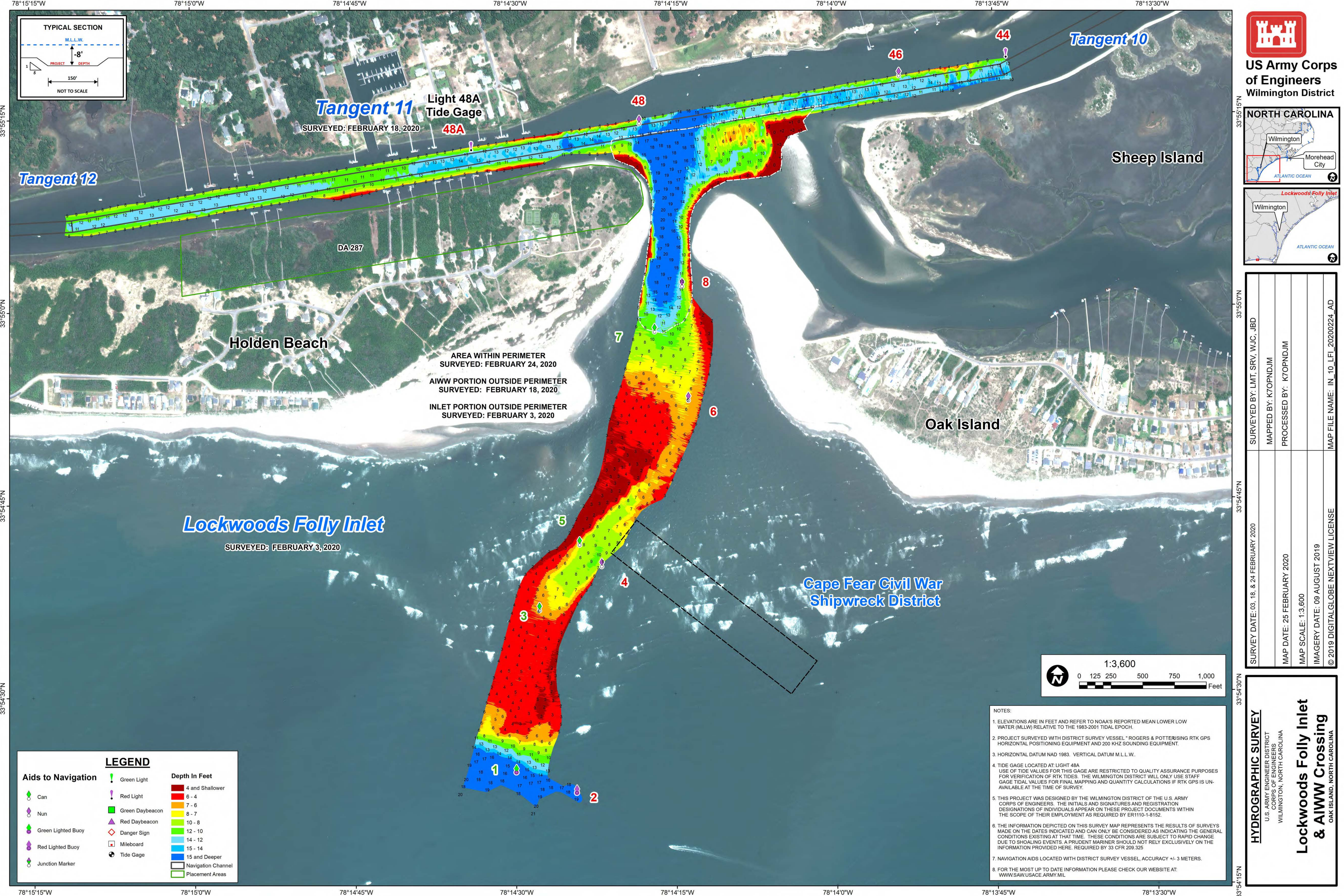
**Lockwoods Folly Inlet  
& AIWW Crossing**

OAK ISLAND, NORTH CAROLINA

NOTES:

- ELEVATIONS ARE IN FEET AND REFER TO NOAA'S REPORTED MEAN LOWER LOW WATER (MLLW) RELATIVE TO THE 1983-2001 TIDAL EPOCH.
- PROJECT SURVEYED WITH DISTRICT SURVEY VESSEL "SANDERSON", USING RTK GPS HORIZONTAL POSITIONING EQUIPMENT AND 200 KHZ SOUNDING EQUIPMENT.
- HORIZONTAL DATUM NAD 1983. VERTICAL DATUM M.L.L.W.
- TIDE GAGE LOCATED AT: LIGHT 48A  
USE OF TIDE VALUES FOR THIS GAGE ARE RESTRICTED TO QUALITY ASSURANCE PURPOSES FOR VERIFICATION OF RTK TIDES. THE WILMINGTON DISTRICT WILL ONLY USE STAFF GAGE TIDAL VALUES FOR FINAL MAPPING AND QUANTITY CALCULATIONS IF RTK GPS IS UNAVAILABLE AT THE TIME OF SURVEY.
- THIS PROJECT WAS DESIGNED BY THE WILMINGTON DISTRICT OF THE U.S. ARMY CORPS OF ENGINEERS. THE INITIALS AND SIGNATURES AND REGISTRATION DESIGNATIONS OF INDIVIDUALS APPEAR ON THESE PROJECT DOCUMENTS WITHIN THE SCOPE OF THEIR EMPLOYMENT AS REQUIRED BY ER1110-1-8152.
- THE INFORMATION DEPICTED ON THIS SURVEY MAP REPRESENTS THE RESULTS OF SURVEYS MADE ON THE DATES INDICATED AND CAN ONLY BE CONSIDERED AS INDICATING THE GENERAL CONDITIONS EXISTING AT THAT TIME. THESE CONDITIONS ARE SUBJECT TO RAPID CHANGE DUE TO SHOALING EVENTS. A PRUDENT MARINER SHOULD NOT RELY EXCLUSIVELY ON THE INFORMATION PROVIDED HERE. REQUIRED BY 33 CFR 209.325
- NAVIGATION AIDS LOCATED WITH DISTRICT SURVEY VESSEL, ACCURACY +/- 3 METERS.
- FOR THE MOST UP TO DATE INFORMATION PLEASE CHECK OUR WEBSITE AT: [WWW.SAW.USACE.ARMY.MIL](http://WWW.SAW.USACE.ARMY.MIL)







**US Army Corps  
of Engineers**  
Wilmington District

**NORTH CAROLINA**



Wilmington  
Morehead City  
ATLANTIC OCEAN



Lockwoods Folly Inlet  
Wilmington  
ATLANTIC OCEAN

SURVEY DATE: 03, 18, & 24 FEBRUARY 2020	SURVEYED BY: LMT, SRV, WJC, JBD
	MAPPED BY: K7OPNDJIM
	PROCESSED BY: K7OPNDJIM
MAP DATE: 25 FEBRUARY 2020	
MAP SCALE: 1:3,600	
IMAGERY DATE: 09 AUGUST 2019	
© 2019 DIGITAL GLOBE NEXTVIEW LICENSE	MAP FILE NAME: IN_10_LFI_20200224_AD

**HYDROGRAPHIC SURVEY**

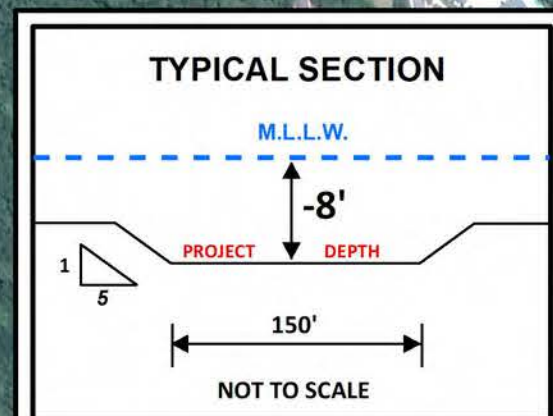
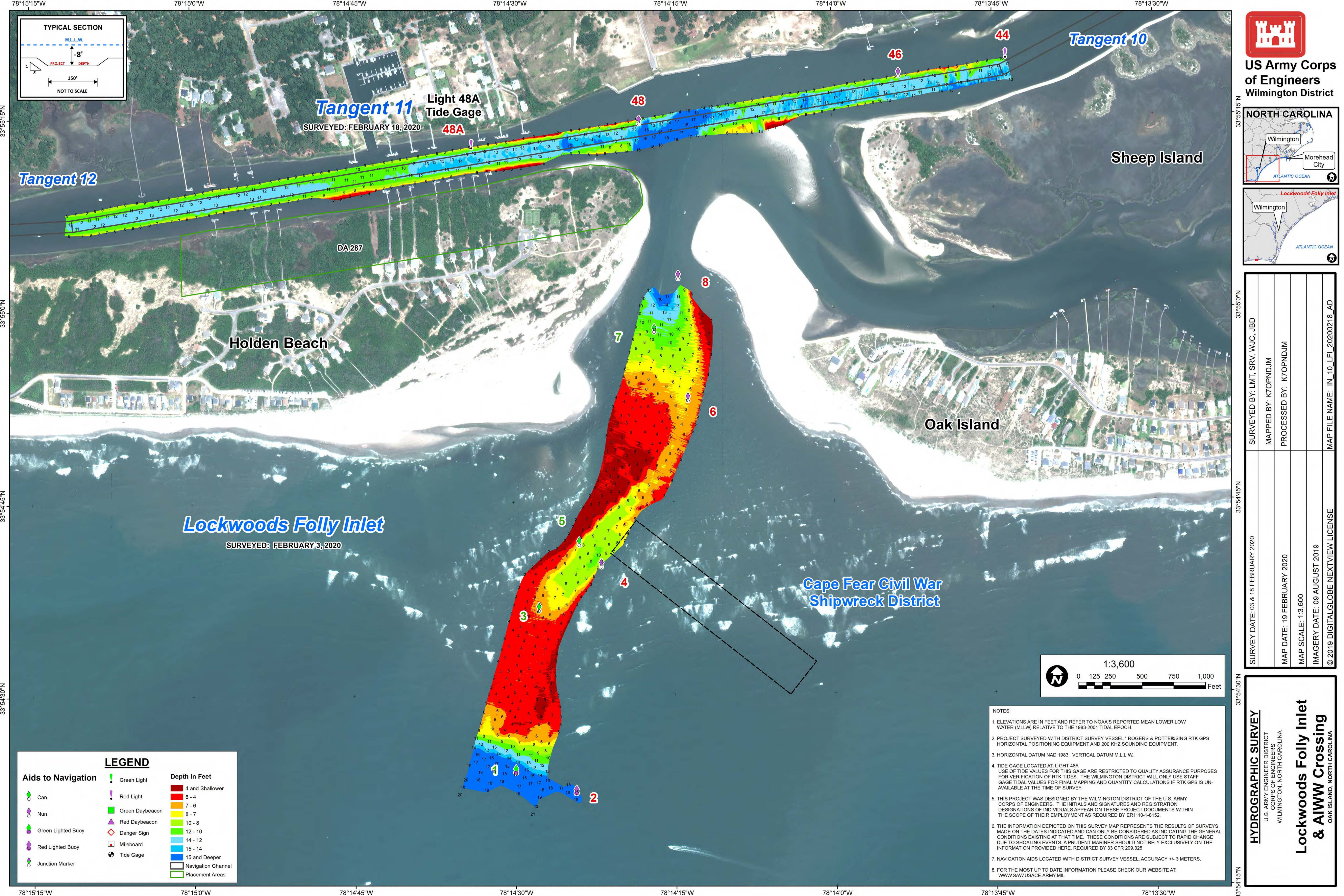
U.S. ARMY ENGINEER DISTRICT  
CORPS OF ENGINEERS  
WILMINGTON, NORTH CAROLINA

**Lockwoods Folly Inlet  
& AIWW Crossing**

OAK ISLAND, NORTH CAROLINA

- NOTES:
- ELEVATIONS ARE IN FEET AND REFER TO NOAA'S REPORTED MEAN LOWER LOW WATER (MLLW) RELATIVE TO THE 1983-2001 TIDAL EPOCH.
  - PROJECT SURVEYED WITH DISTRICT SURVEY VESSEL "ROGERS & POTTER" USING RTK GPS HORIZONTAL POSITIONING EQUIPMENT AND 200 KHZ SOUNDING EQUIPMENT.
  - HORIZONTAL DATUM NAD 1983. VERTICAL DATUM M.L.L.W.
  - TIDE GAGE LOCATED AT: LIGHT 48A  
USE OF TIDE VALUES FOR THIS GAGE ARE RESTRICTED TO QUALITY ASSURANCE PURPOSES FOR VERIFICATION OF RTK TIDES. THE WILMINGTON DISTRICT WILL ONLY USE STAFF GAGE TIDAL VALUES FOR FINAL MAPPING AND QUANTITY CALCULATIONS IF RTK GPS IS UNAVAILABLE AT THE TIME OF SURVEY.
  - THIS PROJECT WAS DESIGNED BY THE WILMINGTON DISTRICT OF THE U.S. ARMY CORPS OF ENGINEERS. THE INITIALS AND SIGNATURES AND REGISTRATION DESIGNATIONS OF INDIVIDUALS APPEAR ON THESE PROJECT DOCUMENTS WITHIN THE SCOPE OF THEIR EMPLOYMENT AS REQUIRED BY ER1110-1-8152.
  - THE INFORMATION DEPICTED ON THIS SURVEY MAP REPRESENTS THE RESULTS OF SURVEYS MADE ON THE DATES INDICATED AND CAN ONLY BE CONSIDERED AS INDICATING THE GENERAL CONDITIONS EXISTING AT THAT TIME. THESE CONDITIONS ARE SUBJECT TO RAPID CHANGE DUE TO SHOALING EVENTS. A PRUDENT MARINER SHOULD NOT RELY EXCLUSIVELY ON THE INFORMATION PROVIDED HERE. REQUIRED BY 33 CFR 209.325
  - NAVIGATION AIDS LOCATED WITH DISTRICT SURVEY VESSEL, ACCURACY +/- 3 METERS.
  - FOR THE MOST UP TO DATE INFORMATION PLEASE CHECK OUR WEBSITE AT: [WWW.SAW.USACE.ARMY.MIL](http://WWW.SAW.USACE.ARMY.MIL)







**US Army Corps  
of Engineers**  
Wilmington District

**NORTH CAROLINA**



Wilmington  
Morehead City  
ATLANTIC OCEAN



Lockwoods Folly Inlet  
Wilmington  
ATLANTIC OCEAN

SURVEY DATE: 03 & 18 FEBRUARY 2020	SURVEYED BY: LMT, SRV, WJC, JBD
MAP DATE: 19 FEBRUARY 2020	MAPPED BY: KTOPNDJM
MAP SCALE: 1:3,600	PROCESSED BY: KTOPNDJM
IMAGERY DATE: 09 AUGUST 2019	
© 2019 DIGITALGLOBE NEXTVIEW LICENSE	MAP FILE NAME: IN_10_LFI_20200218_AD

- NOTES:**
- ELEVATIONS ARE IN FEET AND REFER TO NOAA'S REPORTED MEAN LOWER LOW WATER (MLLW) RELATIVE TO THE 1983-2001 TIDAL EPOCH.
  - PROJECT SURVEYED WITH DISTRICT SURVEY VESSEL "ROGERS & POTTER" USING RTK GPS HORIZONTAL POSITIONING EQUIPMENT AND 200 KHZ SOUNDING EQUIPMENT.
  - HORIZONTAL DATUM NAD 1983. VERTICAL DATUM M.L.L.W.
  - TIDE GAGE LOCATED AT: LIGHT 48A  
USE OF TIDE VALUES FOR THIS GAGE ARE RESTRICTED TO QUALITY ASSURANCE PURPOSES FOR VERIFICATION OF RTK TIDES. THE WILMINGTON DISTRICT WILL ONLY USE STAFF GAGE TIDAL VALUES FOR FINAL MAPPING AND QUANTITY CALCULATIONS IF RTK GPS IS UNAVAILABLE AT THE TIME OF SURVEY.
  - THIS PROJECT WAS DESIGNED BY THE WILMINGTON DISTRICT OF THE U.S. ARMY CORPS OF ENGINEERS. THE INITIALS AND SIGNATURES AND REGISTRATION DESIGNATIONS OF INDIVIDUALS APPEAR ON THESE PROJECT DOCUMENTS WITHIN THE SCOPE OF THEIR EMPLOYMENT AS REQUIRED BY ER1110-1-8152.
  - THE INFORMATION DEPICTED ON THIS SURVEY MAP REPRESENTS THE RESULTS OF SURVEYS MADE ON THE DATES INDICATED AND CAN ONLY BE CONSIDERED AS INDICATING THE GENERAL CONDITIONS EXISTING AT THAT TIME. THESE CONDITIONS ARE SUBJECT TO RAPID CHANGE DUE TO SHOALING EVENTS. A PRUDENT MARINER SHOULD NOT RELY EXCLUSIVELY ON THE INFORMATION PROVIDED HERE. REQUIRED BY 33 CFR 209.325
  - NAVIGATION AIDS LOCATED WITH DISTRICT SURVEY VESSEL, ACCURACY +/- 3 METERS.
  - FOR THE MOST UP TO DATE INFORMATION PLEASE CHECK OUR WEBSITE AT: [WWW.SAW.USACE.ARMY.MIL](http://WWW.SAW.USACE.ARMY.MIL)

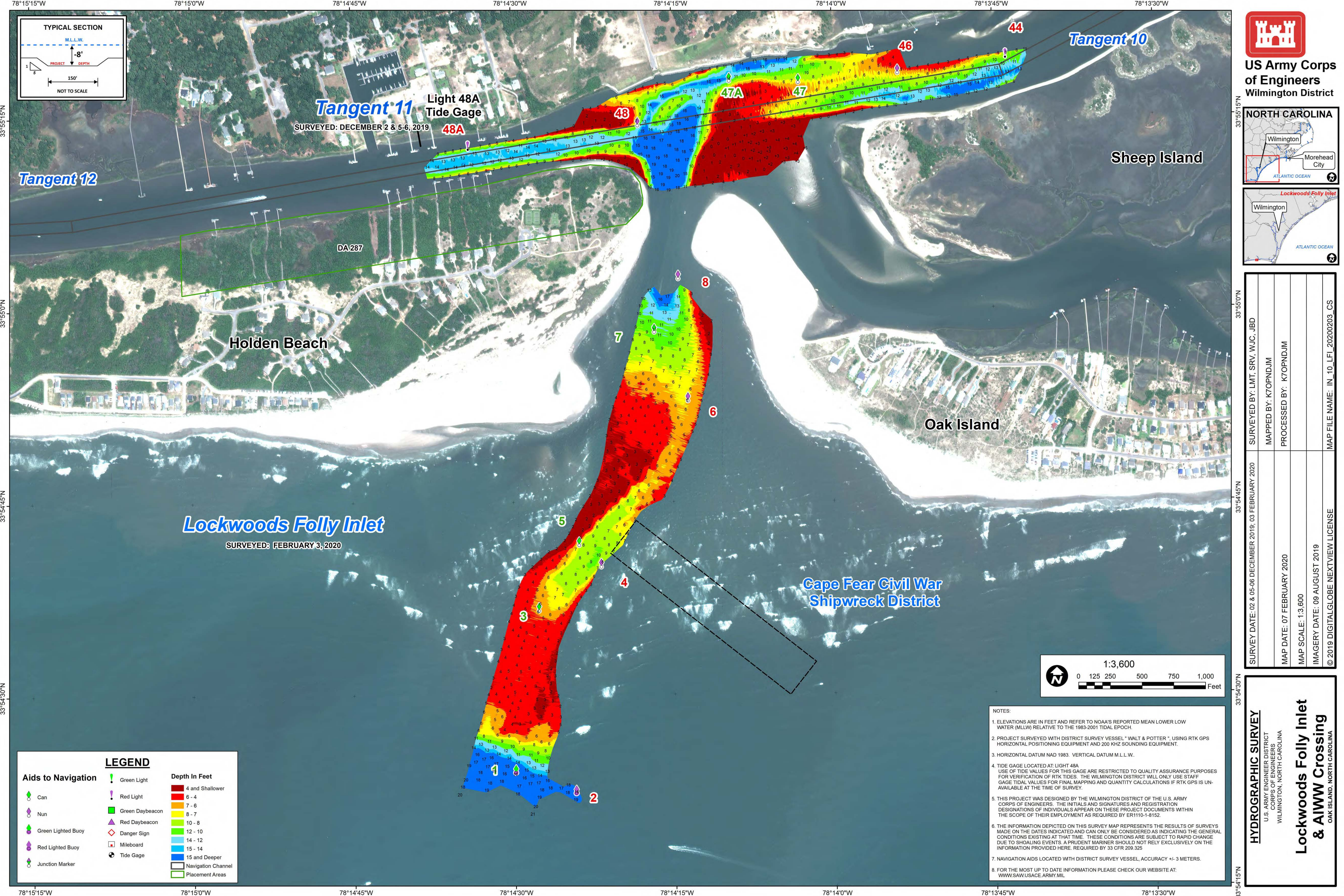
**HYDROGRAPHIC SURVEY**

U.S. ARMY ENGINEER DISTRICT  
CORPS OF ENGINEERS  
WILMINGTON, NORTH CAROLINA

**Lockwoods Folly Inlet  
& AIWW Crossing**

OAK ISLAND, NORTH CAROLINA







**US Army Corps  
of Engineers**  
Wilmington District

**NORTH CAROLINA**



Wilmington  
Morehead City

Lockwoods Folly Inlet



Wilmington

SURVEY DATE: 02 & 05-06 DECEMBER 2019; 03 FEBRUARY 2020	SURVEYED BY: LMT, SRV, WJC, JBD
MAP DATE: 07 FEBRUARY 2020	MAPPED BY: KTOPNDJM
MAP SCALE: 1:3,600	PROCESSED BY: KTOPNDJM
IMAGERY DATE: 09 AUGUST 2019	
© 2019 DIGITALGLOBE NEXTVIEW LICENSE	MAP FILE NAME: IN_10_LFI_20200203_CS

**HYDROGRAPHIC SURVEY**

U.S. ARMY ENGINEER DISTRICT  
CORPS OF ENGINEERS  
WILMINGTON, NORTH CAROLINA

**Lockwoods Folly Inlet  
& AIWW Crossing**

OAK ISLAND, NORTH CAROLINA

- NOTES:
- ELEVATIONS ARE IN FEET AND REFER TO NOAA'S REPORTED MEAN LOWER LOW WATER (MLLW) RELATIVE TO THE 1983-2001 TIDAL EPOCH.
  - PROJECT SURVEYED WITH DISTRICT SURVEY VESSEL "WALT & POTTER", USING RTK GPS HORIZONTAL POSITIONING EQUIPMENT AND 200 KHZ SOUNDING EQUIPMENT.
  - HORIZONTAL DATUM NAD 1983. VERTICAL DATUM M.L.L.W.
  - TIDE GAGE LOCATED AT: LIGHT 48A  
USE OF TIDE VALUES FOR THIS GAGE ARE RESTRICTED TO QUALITY ASSURANCE PURPOSES FOR VERIFICATION OF RTK TIDES. THE WILMINGTON DISTRICT WILL ONLY USE STAFF GAGE TIDAL VALUES FOR FINAL MAPPING AND QUANTITY CALCULATIONS IF RTK GPS IS UNAVAILABLE AT THE TIME OF SURVEY.
  - THIS PROJECT WAS DESIGNED BY THE WILMINGTON DISTRICT OF THE U.S. ARMY CORPS OF ENGINEERS. THE INITIALS AND SIGNATURES AND REGISTRATION DESIGNATIONS OF INDIVIDUALS APPEAR ON THESE PROJECT DOCUMENTS WITHIN THE SCOPE OF THEIR EMPLOYMENT AS REQUIRED BY ER1110-1-8152.
  - THE INFORMATION DEPICTED ON THIS SURVEY MAP REPRESENTS THE RESULTS OF SURVEYS MADE ON THE DATES INDICATED AND CAN ONLY BE CONSIDERED AS INDICATING THE GENERAL CONDITIONS EXISTING AT THAT TIME. THESE CONDITIONS ARE SUBJECT TO RAPID CHANGE DUE TO SHOALING EVENTS. A PRUDENT MARINER SHOULD NOT RELY EXCLUSIVELY ON THE INFORMATION PROVIDED HERE. REQUIRED BY 33 CFR 209.325
  - NAVIGATION AIDS LOCATED WITH DISTRICT SURVEY VESSEL, ACCURACY +/- 3 METERS.
  - FOR THE MOST UP TO DATE INFORMATION PLEASE CHECK OUR WEBSITE AT: [WWW.SAW.USACE.ARMY.MIL](http://WWW.SAW.USACE.ARMY.MIL)