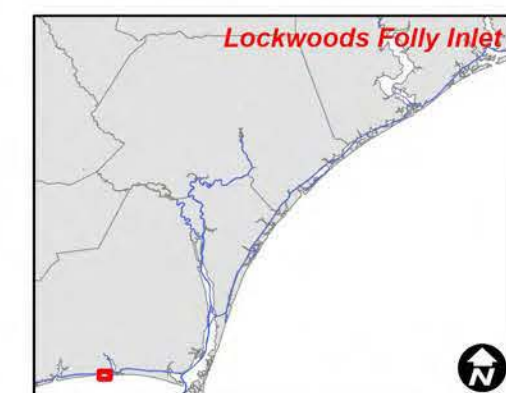


NOTES:

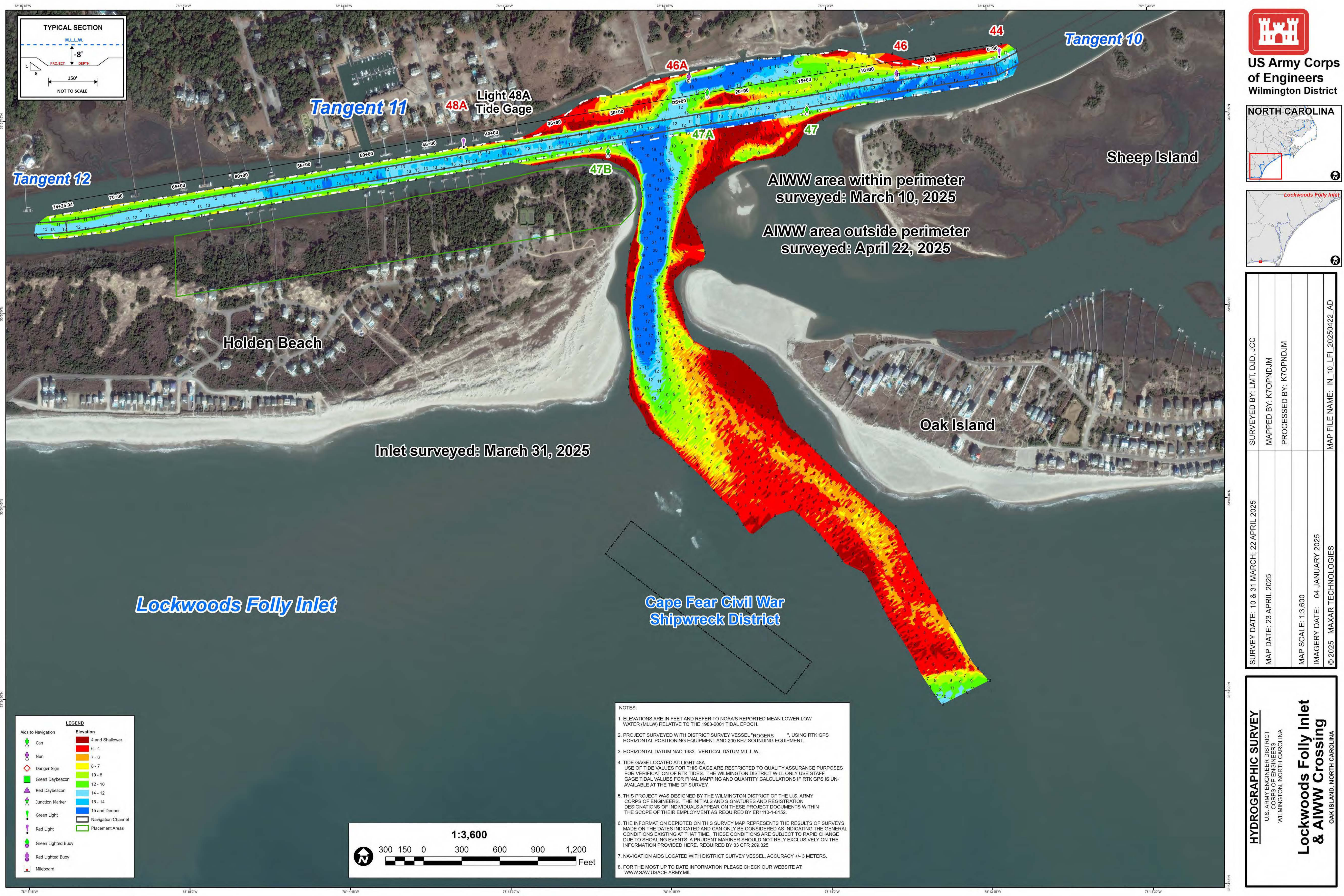
1. ELEVATIONS ARE IN FEET AND REFER TO NOAA'S REPORTED MEAN LOWER LOW WATER (MLLW) RELATIVE TO THE 1983-2001 TIDAL EPOCH.
2. PROJECT SURVEYED WITH DISTRICT SURVEY VESSEL "ROGERS", USING RTK GPS HORIZONTAL POSITIONING EQUIPMENT AND 200 KHZ SOUNDING EQUIPMENT.
3. HORIZONTAL DATUM NAD 1983. VERTICAL DATUM M.L.L.W..
4. TIDE GAUGE LOCATED AT LIGHT 48A
USE OF TIDE VALUES FOR THIS AREA ARE RESTRICTED TO QUALITY ASSURANCE PURPOSES
FOR RTK TIDES. THE WILMINGTON DISTRICT WILL ONLY USE STAFF
GAUGE TIDE VALUES FOR FINAL MAPPING AND QUANTITY CALCULATIONS IF RTK GPS IS UN-
AVAILABLE AT THE TIME OF SURVEY.
5. THIS PROJECT WAS DESIGNED BY THE WILMINGTON DISTRICT OF THE U.S. ARMY
CORPS OF ENGINEERS. THE INITIALS AND SIGNATURES AND REGISTRATION
DESIGNATIONS OF INDIVIDUALS APPEAR ON THESE PROJECT DOCUMENTS WITHIN
THE SCOPE OF THEIR EMPLOYMENT AS REQUIRED BY ER1110-1-8152.
6. THE INFORMATION DEPICTED ON THIS SURVEY MAP REPRESENTS THE RESULTS OF SURVEYS
MADE ON THE DATES INDICATED AND CAN ONLY BE CONSIDERED AS INDICATING THE GENERAL
CONDITIONS EXISTING AT THAT TIME. THESE CONDITIONS ARE SUBJECT TO RAPID CHANGE
DUE TO SHOALING EVENTS. A PRUDENT MARINER SHOULD NOT RELY EXCLUSIVELY ON THE
INFORMATION PROVIDED HERE. REQUIRED BY 33 CFR 209.325
7. NAVIGATION AIDS LOCATED WITH DISTRICT SURVEY VESSEL. ACCURACY +/- 3 METERS.
8. FOR THE MOST UP TO DATE INFORMATION PLEASE CHECK OUR WEBSITE AT:
WWW.SAV.USACE.ARMY.MIL

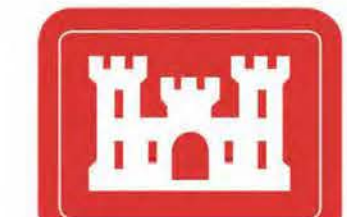


SURVEY DATE: 31 MARCH; 22 & 28 APRIL 2025	SURVEYED BY: LMT, DJD, JCC
MAP DATE: 29 APRIL 2025	MAPPED BY: K7OPNDJIM
	PROCESSED BY: K7OPNDJIM
MAP SCALE: 1:3,600	
IMAGERY DATE: 22 APRIL 2025	
© 2025 MAXAR TECHNOLOGIES	MAP FILE NAME: IN_10_LFI_20250428_AD


HYDROGRAPHIC SURVEY
U.S. ARMY ENGINEER DISTRICT
CORPS OF ENGINEERS
WILMINGTON, NORTH CAROLINA

**Lockwoods Folly Inlet
& AIWW Crossing**
OAK ISLAND, NORTH CAROLINA

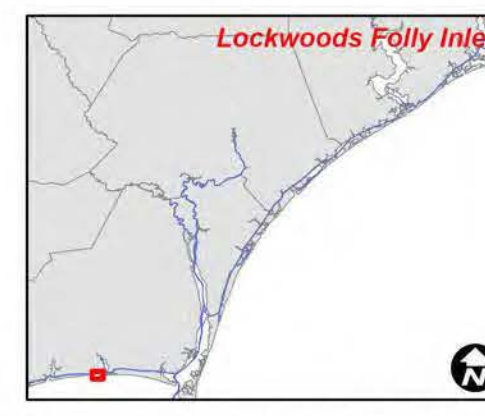



US Army Corps of Engineers
Wilmington District

NORTH CAROLINA



Lockwoods Folly Inlet



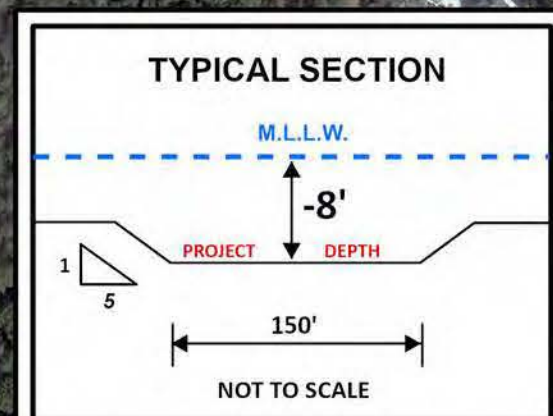
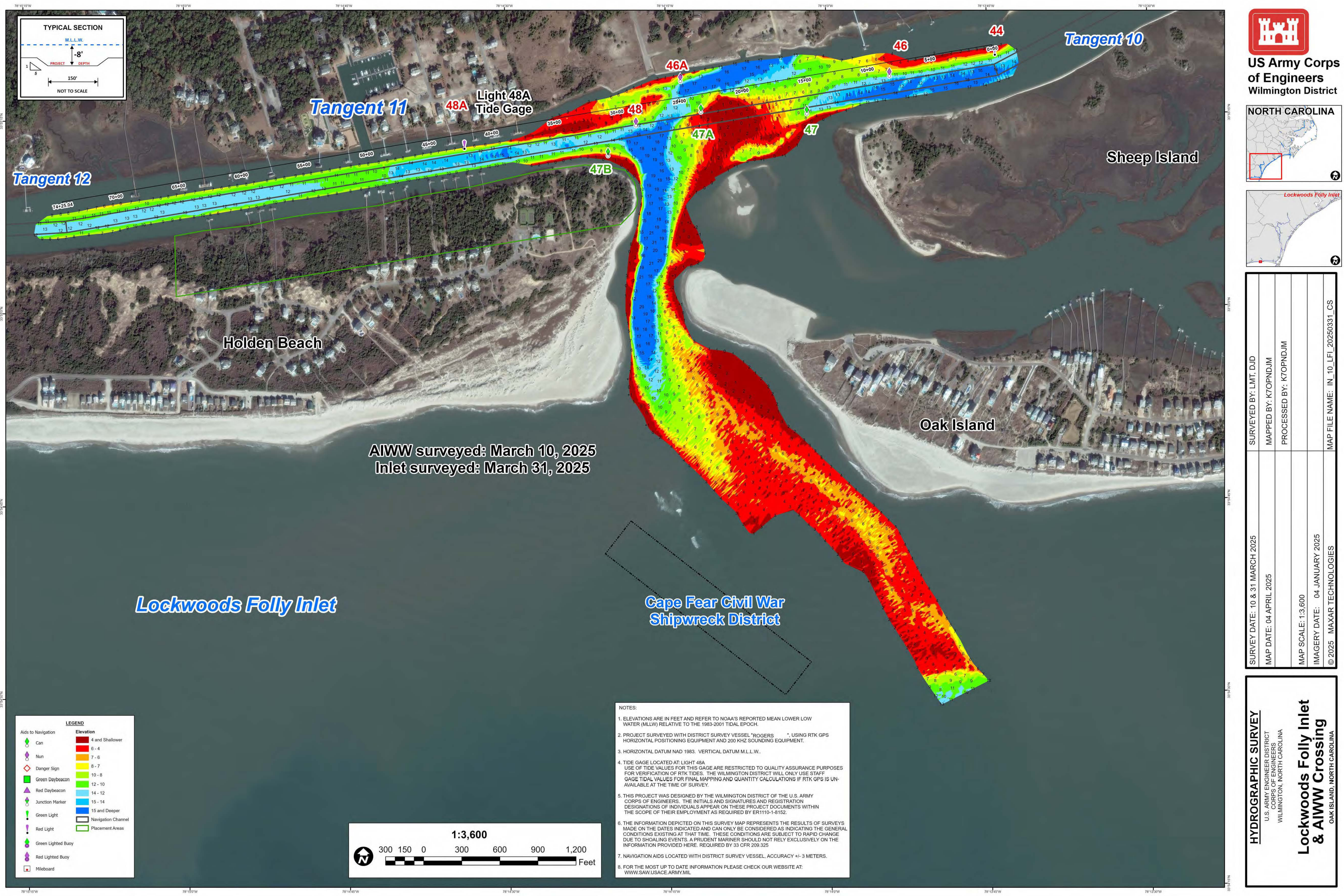
SURVEY DATE: 10 & 31 MARCH; 22 APRIL 2025	SURVEYED BY: LMT, D.J.D., JCC
MAP DATE: 23 APRIL 2025	MAPPED BY: K7OPNDJM
	PROCESSED BY: K7OPNDJM
MAP SCALE: 1:3,600	
IMAGERY DATE: 04 JANUARY 2025	
© 2025 MAXAR TECHNOLOGIES	MAP FILE NAME: IN_10_LFI_20250422_AD

HYDROGRAPHIC SURVEY

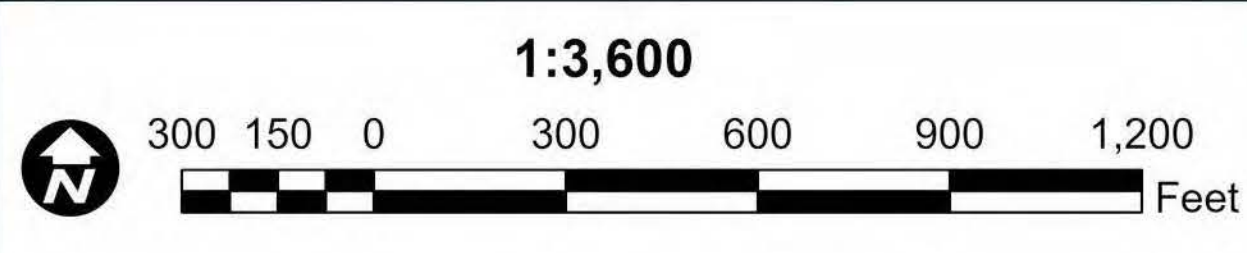
U.S. ARMY ENGINEER DISTRICT
CORPS OF ENGINEERS
WILMINGTON, NORTH CAROLINA

**Lockwoods Folly Inlet
& AIWW Crossing**

OAK ISLAND, NORTH CAROLINA



- LEGEND**
- | | |
|--------------------|--------------------|
| Aids to Navigation | Elevation |
| Can | 4 and Shallower |
| Nun | 6 - 4 |
| Danger Sign | 7 - 6 |
| Green Daybeacon | 8 - 7 |
| Red Daybeacon | 10 - 8 |
| Junction Marker | 12 - 10 |
| Green Light | 14 - 12 |
| Red Light | 15 - 14 |
| Green Lighted Buoy | 15 and Deeper |
| Red Lighted Buoy | Navigation Channel |
| Mileboard | Placement Areas |



NOTES:

- ELEVATIONS ARE IN FEET AND REFER TO NOAA'S REPORTED MEAN LOWER LOW WATER (MLLW) RELATIVE TO THE 1983-2001 TIDAL EPOCH.
- PROJECT SURVEYED WITH DISTRICT SURVEY VESSEL "ROGERS" USING RTK GPS HORIZONTAL POSITIONING EQUIPMENT AND 200 KHZ SOUNDING EQUIPMENT.
- HORIZONTAL DATUM NAD 1983. VERTICAL DATUM M.L.L.W.
- TIDE GAGE LOCATED AT: LIGHT 48A
USE OF TIDE VALUES FOR THIS GAGE ARE RESTRICTED TO QUALITY ASSURANCE PURPOSES FOR VERIFICATION OF RTK TIDES. THE WILMINGTON DISTRICT WILL ONLY USE STAFF GAGE TIDAL VALUES FOR FINAL MAPPING AND QUANTITY CALCULATIONS IF RTK GPS IS UNAVAILABLE AT THE TIME OF SURVEY.
- THIS PROJECT WAS DESIGNED BY THE WILMINGTON DISTRICT OF THE U.S. ARMY CORPS OF ENGINEERS. THE INITIALS AND SIGNATURES AND REGISTRATION DESIGNATIONS OF INDIVIDUALS APPEAR ON THESE PROJECT DOCUMENTS WITHIN THE SCOPE OF THEIR EMPLOYMENT AS REQUIRED BY ER1110-1-8152.
- THE INFORMATION DEPICTED ON THIS SURVEY MAP REPRESENTS THE RESULTS OF SURVEYS MADE ON THE DATES INDICATED AND CAN ONLY BE CONSIDERED AS INDICATING THE GENERAL CONDITIONS EXISTING AT THAT TIME. THESE CONDITIONS ARE SUBJECT TO RAPID CHANGE DUE TO SHOALING EVENTS. A PRUDENT MARINER SHOULD NOT RELY EXCLUSIVELY ON THE INFORMATION PROVIDED HERE. REQUIRED BY 33 CFR 209.325
- NAVIGATION AIDS LOCATED WITH DISTRICT SURVEY VESSEL, ACCURACY +/- 3 METERS.
- FOR THE MOST UP TO DATE INFORMATION PLEASE CHECK OUR WEBSITE AT: WWW.SAW.USACE.ARMY.MIL

US Army Corps of Engineers
Wilmington District

NORTH CAROLINA

Lockwoods Folly Inlet

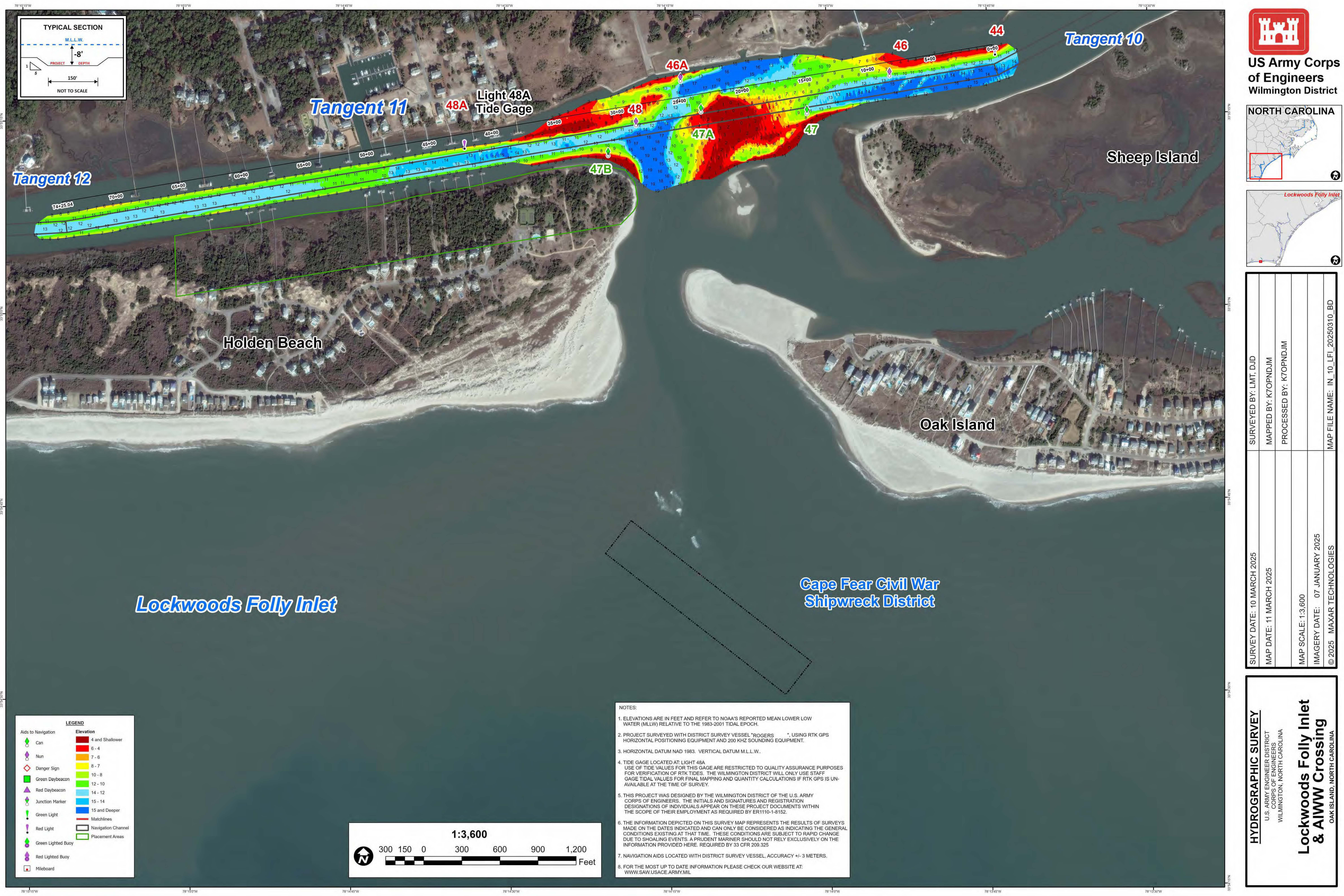
SURVEY DATE: 10 & 31 MARCH 2025	SURVEYED BY: LMT, DJD
MAP DATE: 04 APRIL 2025	MAPPED BY: K7OPNDJM
	PROCESSED BY: K7OPNDJM
MAP SCALE: 1:3,600	
IMAGERY DATE: 04 JANUARY 2025	
© 2025 MAXAR TECHNOLOGIES	MAP FILE NAME: IN_10_LFI_20250331_CS

HYDROGRAPHIC SURVEY

U.S. ARMY ENGINEER DISTRICT
CORPS OF ENGINEERS
WILMINGTON, NORTH CAROLINA

**Lockwoods Folly Inlet
& AIWW Crossing**

OAK ISLAND, NORTH CAROLINA





**US Army Corps
of Engineers**
Wilmington District

NORTH CAROLINA





SURVEY DATE: 10 MARCH 2025	SURVEYED BY: LMT, DJD
MAP DATE: 11 MARCH 2025	MAPPED BY: K7OPNDJM
	PROCESSED BY: K7OPNDJM
MAP SCALE: 1:3,600	
IMAGERY DATE: 07 JANUARY 2025	
© 2025 MAXAR TECHNOLOGIES	MAP FILE NAME: IN_10_LFI_20250310_BD

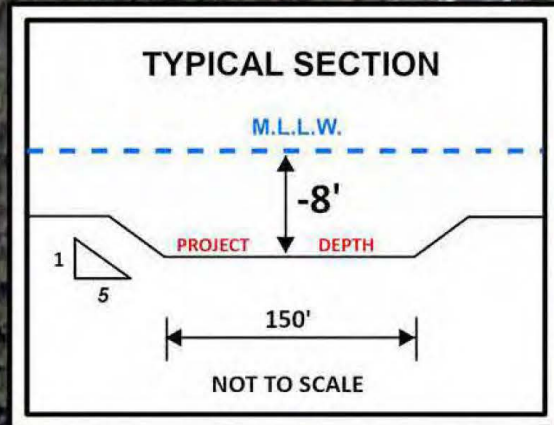
HYDROGRAPHIC SURVEY

U.S. ARMY ENGINEER DISTRICT
CORPS OF ENGINEERS
WILMINGTON, NORTH CAROLINA

**Lockwoods Folly Inlet
& AIWW Crossing**

OAK ISLAND, NORTH CAROLINA

- NOTES:
- ELEVATIONS ARE IN FEET AND REFER TO NOAA'S REPORTED MEAN LOWER LOW WATER (MLLW) RELATIVE TO THE 1983-2001 TIDAL EPOCH.
 - PROJECT SURVEYED WITH DISTRICT SURVEY VESSEL "ROGERS" USING RTK GPS HORIZONTAL POSITIONING EQUIPMENT AND 200 KHZ SOUNDING EQUIPMENT.
 - HORIZONTAL DATUM NAD 1983. VERTICAL DATUM M.L.L.W..
 - TIDE GAGE LOCATED AT: LIGHT 48A. USE OF TIDE VALUES FOR THIS GAGE ARE RESTRICTED TO QUALITY ASSURANCE PURPOSES FOR VERIFICATION OF RTK TIDES. THE WILMINGTON DISTRICT WILL ONLY USE STAFF GAGE TIDAL VALUES FOR FINAL MAPPING AND QUANTITY CALCULATIONS IF RTK GPS IS UNAVAILABLE AT THE TIME OF SURVEY.
 - THIS PROJECT WAS DESIGNED BY THE WILMINGTON DISTRICT OF THE U.S. ARMY CORPS OF ENGINEERS. THE INITIALS AND SIGNATURES AND REGISTRATION DESIGNATIONS OF INDIVIDUALS APPEAR ON THESE PROJECT DOCUMENTS WITHIN THE SCOPE OF THEIR EMPLOYMENT AS REQUIRED BY ER1110-1-8162.
 - THE INFORMATION DEPICTED ON THIS SURVEY MAP REPRESENTS THE RESULTS OF SURVEYS MADE ON THE DATES INDICATED AND CAN ONLY BE CONSIDERED AS INDICATING THE GENERAL CONDITIONS EXISTING AT THAT TIME. THESE CONDITIONS ARE SUBJECT TO RAPID CHANGE DUE TO SHOALING EVENTS. A PRUDENT MARINER SHOULD NOT RELY EXCLUSIVELY ON THE INFORMATION PROVIDED HERE. REQUIRED BY 33 CFR 209.325
 - NAVIGATION AIDS LOCATED WITH DISTRICT SURVEY VESSEL, ACCURACY +/- 3 METERS.
 - FOR THE MOST UP TO DATE INFORMATION PLEASE CHECK OUR WEBSITE AT: WWW.SAW.USACE.ARMY.MIL



Lockwoods Folly Inlet

Tangent 11

Light 48A
Tide Gage

DA 287

Holden Beach

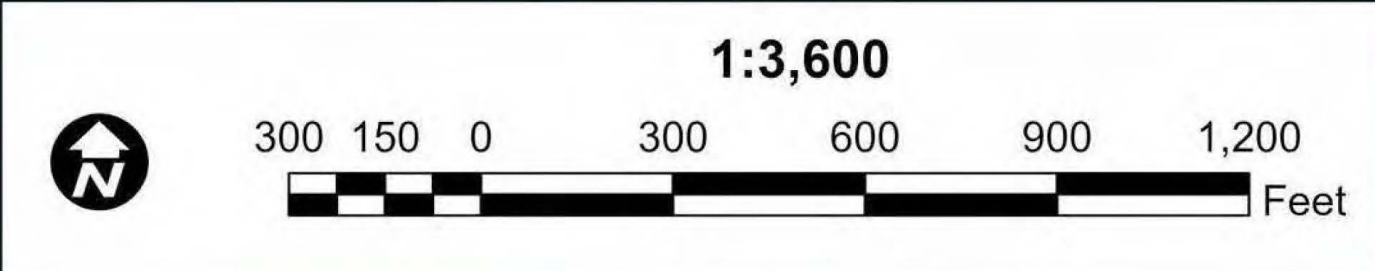
Oak Island

Tangent 10

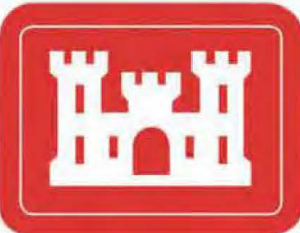
Sheep Island

Cape Fear Civil War
Shipwreck District

LEGEND	
Aids to Navigation	Elevation
Can	4 and Shallower
Nun	6 - 4
Danger Sign	7 - 6
Green Daybeacon	8 - 7
Red Daybeacon	10 - 8
Junction Marker	12 - 10
Green Light	14 - 12
Red Light	15 - 14
Green Lighted Buoy	15 and Deeper
Red Lighted Buoy	Matchlines
Mileboard	Navigation Channel
	Placement Areas



- NOTES:
- ELEVATIONS ARE IN FEET AND REFER TO NOAA'S REPORTED MEAN LOWER LOW WATER (MLLW) RELATIVE TO THE 1983-2001 TIDAL EPOCH.
 - PROJECT SURVEYED WITH DISTRICT SURVEY VESSEL "ROGERS" USING RTK GPS HORIZONTAL POSITIONING EQUIPMENT AND 200 KHZ SOUNDING EQUIPMENT.
 - HORIZONTAL DATUM NAD 1983. VERTICAL DATUM M.L.L.W..
 - TIDE GAGE LOCATED AT LIGHT 48A. USE OF TIDE VALUES FOR THIS GAGE ARE RESTRICTED TO QUALITY ASSURANCE PURPOSES FOR VERIFICATION OF RTK TIDES. THE WILMINGTON DISTRICT WILL ONLY USE STAFF GAGE TIDE VALUES FOR FINAL MAPPING AND QUANTITY CALCULATIONS IF RTK GPS IS UNAVAILABLE AT THE TIME OF SURVEY.
 - THIS PROJECT WAS DESIGNED BY THE WILMINGTON DISTRICT OF THE U.S. ARMY CORPS OF ENGINEERS. THE INITIALS AND SIGNATURES AND REGISTRATION DESIGNATIONS OF INDIVIDUALS APPEAR ON THESE PROJECT DOCUMENTS WITHIN THE SCOPE OF THEIR EMPLOYMENT AS REQUIRED BY ER1110-1-8152.
 - THE INFORMATION DEPICTED ON THIS SURVEY MAP REPRESENTS THE RESULTS OF SURVEYS MADE ON THE DATES INDICATED AND CAN ONLY BE CONSIDERED AS INDICATING THE GENERAL CONDITIONS EXISTING AT THAT TIME. THESE CONDITIONS ARE SUBJECT TO RAPID CHANGE DUE TO SHOALING EVENTS. A PRUDENT MARINER SHOULD NOT RELY EXCLUSIVELY ON THE INFORMATION PROVIDED HERE. REQUIRED BY 33 CFR 209.325
 - NAVIGATION AIDS LOCATED WITH DISTRICT SURVEY VESSEL, ACCURACY +/- 3 METERS.
 - FOR THE MOST UP TO DATE INFORMATION PLEASE CHECK OUR WEBSITE AT: WWW.SAW.USACE.ARMY.MIL



US Army Corps
of Engineers
Wilmington District

NORTH CAROLINA



Lockwoods Folly Inlet



SURVEY DATE: 15 JANUARY 2025	SURVEYED BY: DJD, LMT
MAP DATE: 22 JANUARY 2025	MAPPED BY: K7OPNKMWS
	PROCESSED BY: K7OPNKMWS
MAP SCALE: 1:3,600	
IMAGERY DATE: 4 JANUARY 2025	
© 2025 MAXAR TECHNOLOGIES	MAP FILE NAME: IN_10_LFI_20250115_CS

HYDROGRAPHIC SURVEY

U.S. ARMY ENGINEER DISTRICT
CORPS OF ENGINEERS
WILMINGTON, NORTH CAROLINA

Lockwoods Folly Inlet
& AIWW Crossing

OAK ISLAND, NORTH CAROLINA