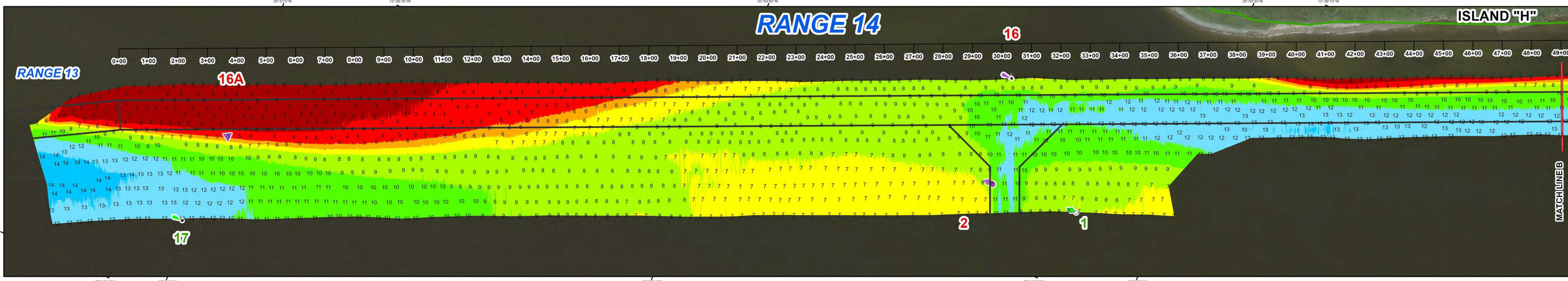
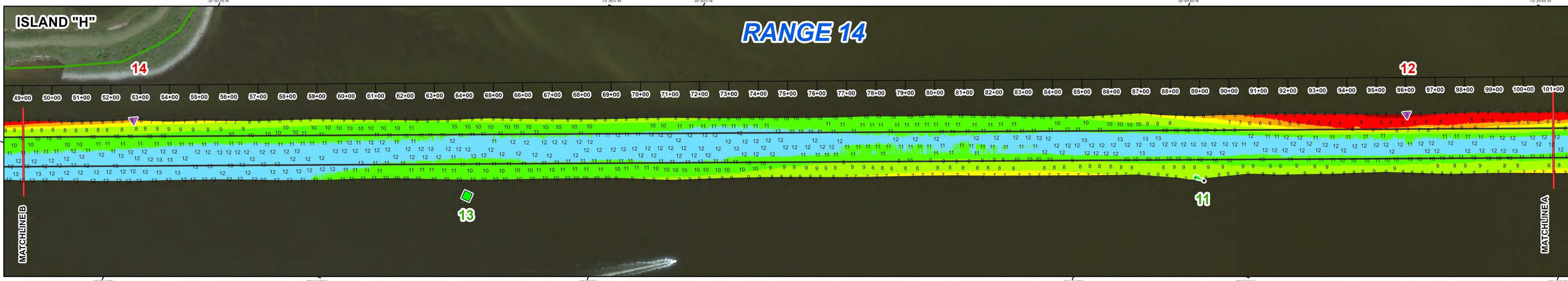
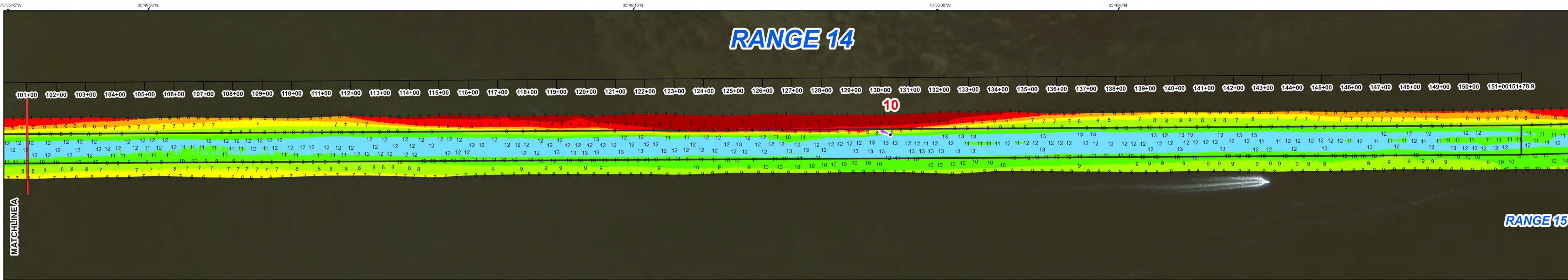
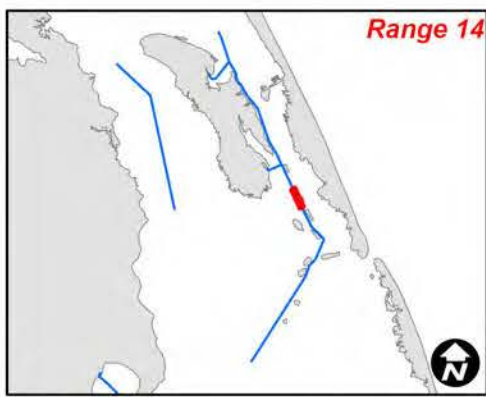
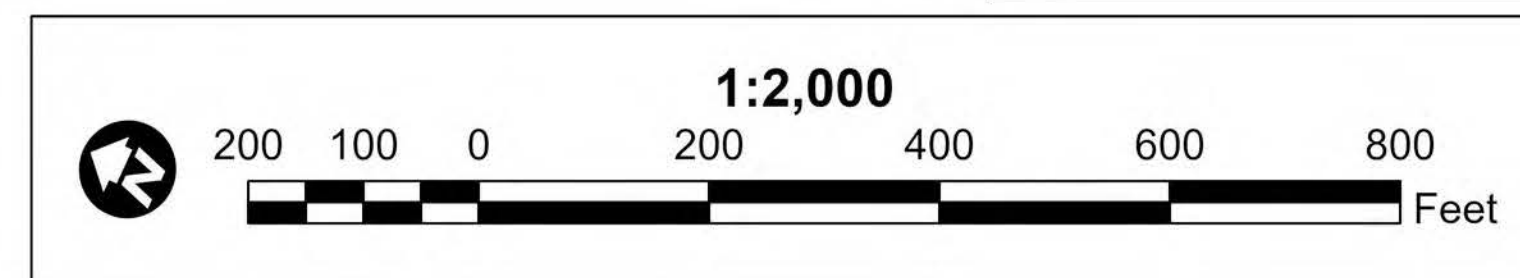
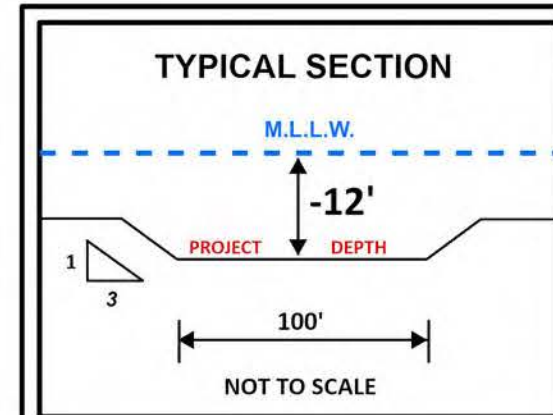


US Army Corps of Engineers
Wilmington District



NOTES:
1. ELEVATIONS ARE IN FEET AND TENTHS AND REFER TO NOAA'S REPORTED MEAN LOWER LOW WATER (MLLW) RELATIVE TO THE 1983-2001 TIDAL EPOCH.
2. PROJECT SURVEYED WITH DISTRICT SURVEY VESSEL "KNOWLTON", USING RTK GPS HORIZONTAL POSITIONING EQUIPMENT AND 200 KHZ SOUNDING EQUIPMENT.
3. HORIZONTAL DATUM NAD 1983. VERTICAL DATUM M.L.L.W.
4. TIDE GAGE LOCATED AT WANCHESE OFFICE RAMP. USE OF TIDE VALUES FOR THIS GAGE ARE RESTRICTED TO QUALITY ASSURANCE PURPOSES FOR VERIFICATION OF RTK TIDES. THE WILMINGTON DISTRICT WILL ONLY USE STAFF GAGE TIDAL VALUES FOR FINAL MAPPING AND QUANTITY CALCULATIONS IF RTK GPS IS UNAVAILABLE AT THE TIME OF SURVEY.
5. THIS PROJECT WAS DESIGNED BY THE WILMINGTON DISTRICT OF THE U.S. ARMY CORPS OF ENGINEERS. THE INITIALS AND SIGNATURES AND REGISTRATION DESIGNATIONS OF INDIVIDUALS APPEAR ON THESE PROJECT DOCUMENTS WITHIN THE SCOPE OF THEIR EMPLOYMENT AS REQUIRED BY ER1110-1-8152.
6. THE INFORMATION DEPICTED ON THIS SURVEY MAP REPRESENTS THE RESULTS OF SURVEYS MADE ON THE DATES INDICATED AND CAN ONLY BE CONSIDERED AS INDICATING THE GENERAL CONDITIONS EXISTING AT THAT TIME. THESE CONDITIONS ARE SUBJECT TO RAPID CHANGE DUE TO SHOALING EVENTS. A PRUDENT MARINER SHOULD NOT RELY EXCLUSIVELY ON THE INFORMATION PROVIDED HERE. REQUIRED BY 33 CFR 209.325.
7. NAVIGATION AIDS LOCATED WITH DISTRICT SURVEY VESSEL, ACCURACY +/- 3 METERS.
8. FOR THE MOST UP TO DATE INFORMATION PLEASE CHECK OUR WEBSITE AT: WWW.SAW.USACE.ARMY.MIL

LEGEND	
Aids to Navigation	Elevation
Can	4 and Shallower
Nun	6 - 4
Danger Sign	7 - 6
Green Daybeacon	8 - 7
Red Daybeacon	10 - 8
Junction Marker	12 - 10
Green Light	14 - 12
Red Light	15 - 14
Green Lighted Buoy	15 and Deeper
Red Lighted Buoy	Matchlines
Mileboard	Navigation Channel
	Placement Areas



SURVEYED BY: DCH, JBC	SURVEY DATE: 15 OCTOBER 2025
MAPPED BY: KTOPNKMS	MAP DATE: 15 OCTOBER 2025
PROCESSED BY: KTOPNKMS	MAP SCALE: 1:2,000
	IMAGERY DATE: 28 JUNE 2025
	© 2025 MAXAR TECHNOLOGIES
MAP FILE NAME: MN_09_R14_20251015_CS	

HYDROGRAPHIC SURVEY
U.S. ARMY ENGINEER DISTRICT
CORPS OF ENGINEERS
WILMINGTON, NORTH CAROLINA
MANTEO CHANNEL
RANGE 14
SHALLOWBAG BAY, NORTH CAROLINA