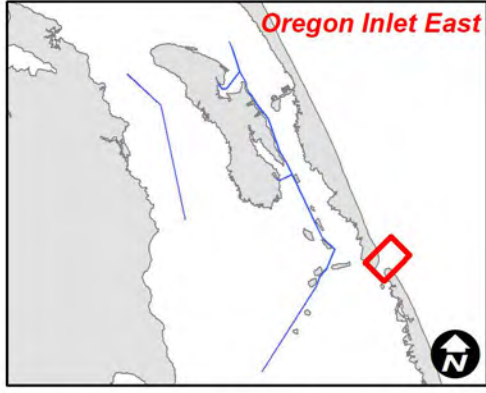




**US Army Corps  
of Engineers**  
Wilmington District

**NORTH CAROLINA**



SURVEY DATE: 27 SEPTEMBER & 22-23 NOVEMBER 2023	SURVEYED BY: DCH, WJC, RWA
MAP DATE: 28 DECEMBER 2022	MAPPED BY: K7OPNAGF
MAP SCALE: 1:3,600	PROCESSED BY: K7OPNAGF
IMAGERY DATE: 16 DECEMBER 2022	BUOYS 10 & 11 UPDATED ON 27 DECEMBER 2022
© 2022 DIGITALGLOBE NEXTVIEW LICENSE	MAP FILE NAME: MN_01_OIB_20221122_CS_BAR_ATON3

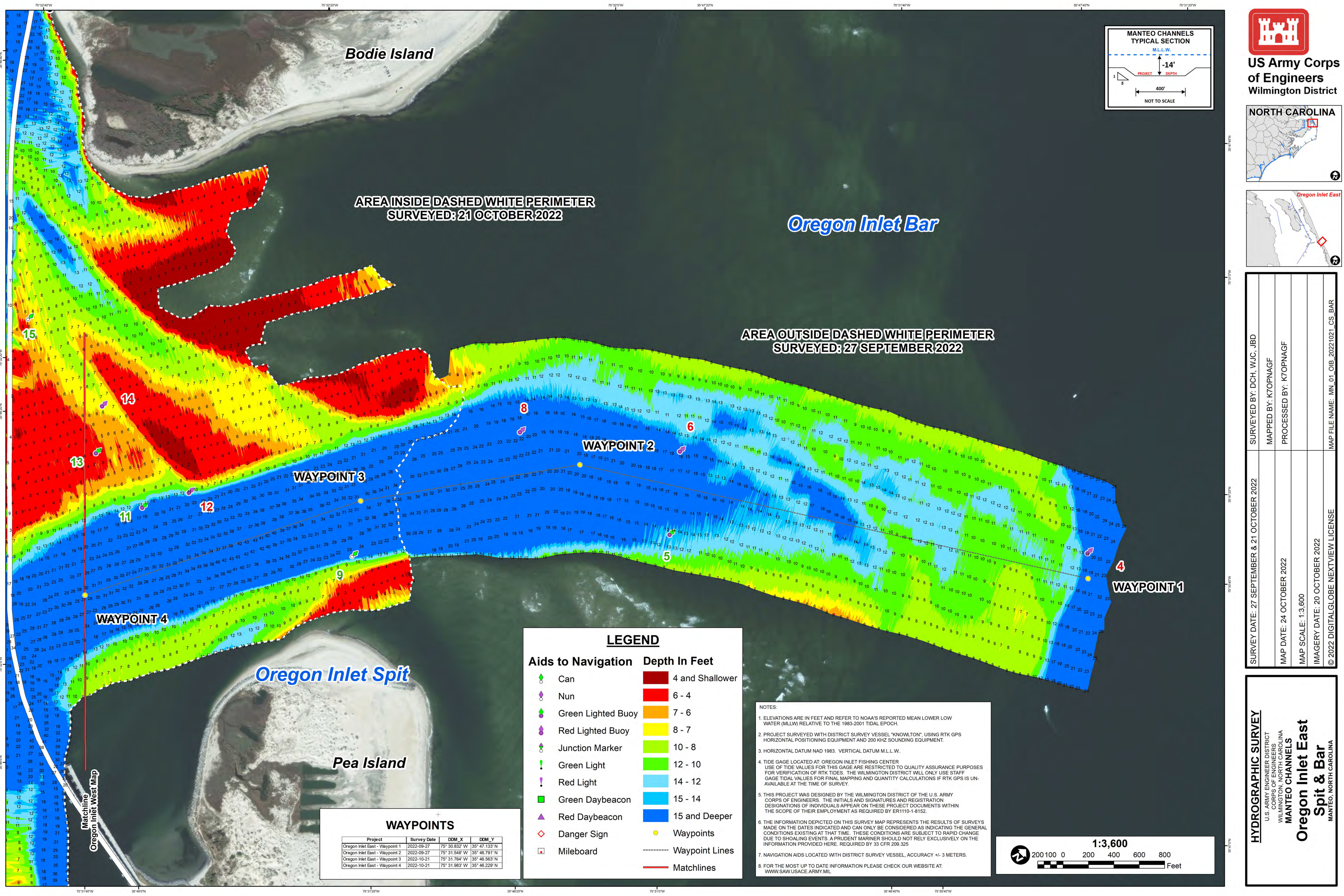
**HYDROGRAPHIC SURVEY**


U.S. ARMY ENGINEER DISTRICT  
CORPS OF ENGINEERS  
WILMINGTON, NORTH CAROLINA  
**MANTEO CHANNELS**

**Oregon Inlet East  
Spit & Bar**

MANTEO, NORTH CAROLINA

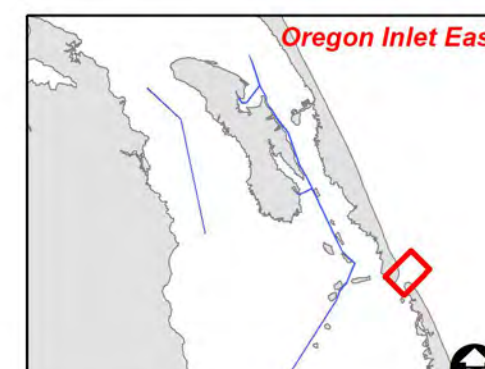







**US Army Corps of Engineers**  
Wilmington District

**NORTH CAROLINA**



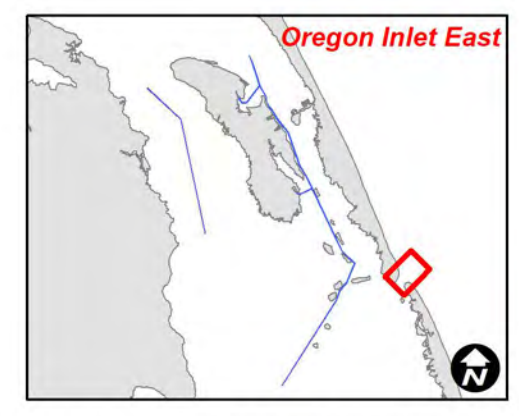
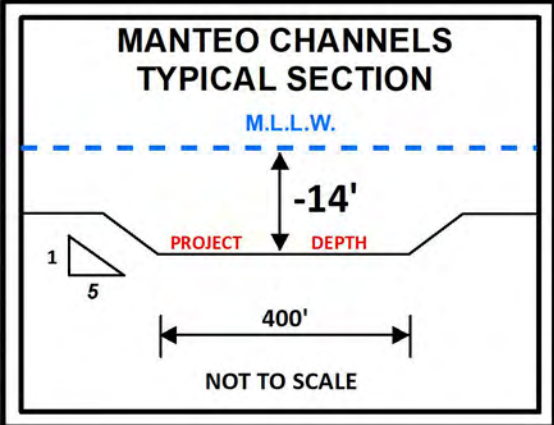
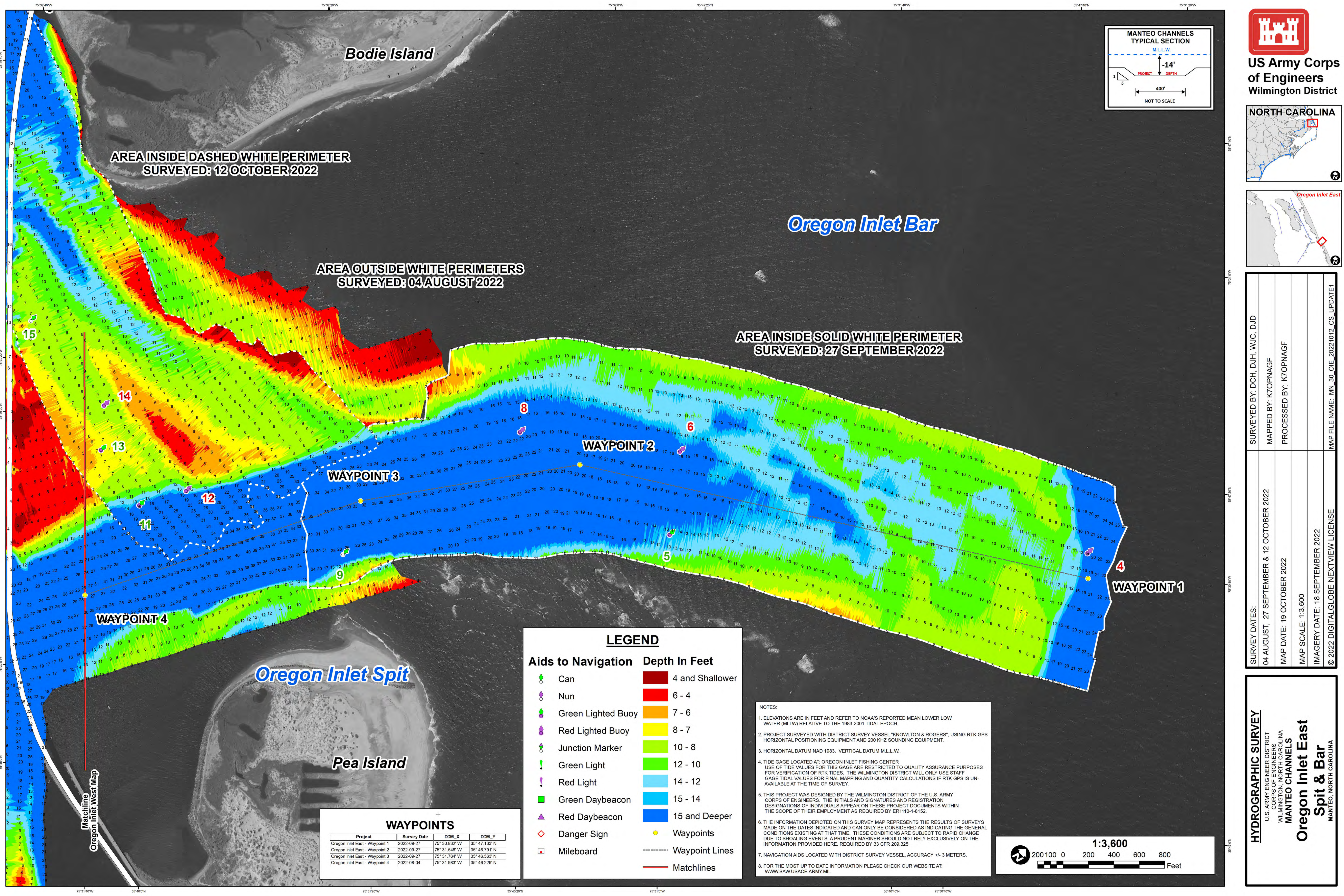
SURVEYED BY: DCH, WJC, JBD	SURVEY DATE: 27 SEPTEMBER & 21 OCTOBER 2022
MAPPED BY: KTOPNAGF	MAP DATE: 24 OCTOBER 2022
PROCESSED BY: KTOPNAGF	MAP SCALE: 1:3,600
	IMAGERY DATE: 20 OCTOBER 2022
MAP FILE NAME: MN_01_OIB_20221021_CS_BAR	© 2022 DIGITALGLOBE NEXTVIEW LICENSE

**HYDROGRAPHIC SURVEY**

U.S. ARMY ENGINEER DISTRICT  
CORPS OF ENGINEERS  
WILMINGTON, NORTH CAROLINA  
**MANTEO CHANNELS**

**Oregon Inlet East Spit & Bar**  
MANTEO, NORTH CAROLINA





SURVEYED BY: DCH, DJH, WJC, DJD	
MAPPED BY: KTOPNAGF	
PROCESSED BY: KTOPNAGF	
MAP FILE NAME: MN_30_OIE_20221012_CS_UPDATE1	
SURVEY DATES:	04 AUGUST, 27 SEPTEMBER & 12 OCTOBER 2022
MAP DATE:	19 OCTOBER 2022
MAP SCALE:	1:3,600
IMAGERY DATE:	18 SEPTEMBER 2022
© 2022 DIGITALGLOBE NEXTVIEW LICENSE	

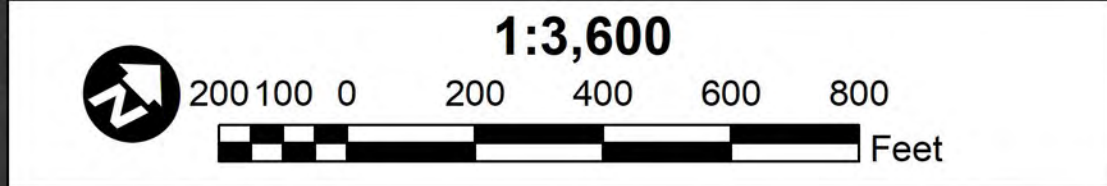
**LEGEND**

Aids to Navigation	Depth In Feet
Can	4 and Shallower
Nun	6 - 4
Green Lighted Buoy	7 - 6
Red Lighted Buoy	8 - 7
Junction Marker	10 - 8
Green Light	12 - 10
Red Light	14 - 12
Green Daybeacon	15 - 14
Red Daybeacon	15 and Deeper
Danger Sign	Waypoints
Mileboard	Waypoint Lines
	Matchlines

- NOTES:
- ELEVATIONS ARE IN FEET AND REFER TO NOAA'S REPORTED MEAN LOWER LOW WATER (MLLW) RELATIVE TO THE 1983-2001 TIDAL EPOCH.
  - PROJECT SURVEYED WITH DISTRICT SURVEY VESSEL "KNOWLTON & ROGERS", USING RTK GPS HORIZONTAL POSITIONING EQUIPMENT AND 200 KHZ SOUNDING EQUIPMENT.
  - HORIZONTAL DATUM NAD 1983. VERTICAL DATUM M.L.L.W.
  - TIDE GAGE LOCATED AT: OREGON INLET FISHING CENTER. USE OF TIDE VALUES FOR THIS GAGE ARE RESTRICTED TO QUALITY ASSURANCE PURPOSES FOR VERIFICATION OF RTK TIDES. THE WILMINGTON DISTRICT WILL ONLY USE STAFF GAGE TIDE VALUES FOR FINAL MAPPING AND QUANTITY CALCULATIONS IF RTK GPS IS UNAVAILABLE AT THE TIME OF SURVEY.
  - THIS PROJECT WAS DESIGNED BY THE WILMINGTON DISTRICT OF THE U.S. ARMY CORPS OF ENGINEERS. THE INITIALS AND SIGNATURES AND REGISTRATION DESIGNATIONS OF INDIVIDUALS APPEAR ON THESE PROJECT DOCUMENTS WITHIN THE SCOPE OF THEIR EMPLOYMENT AS REQUIRED BY ER1110-1-8152.
  - THE INFORMATION DEPICTED ON THIS SURVEY MAP REPRESENTS THE RESULTS OF SURVEYS MADE ON THE DATES INDICATED AND CAN ONLY BE CONSIDERED AS INDICATING THE GENERAL CONDITIONS EXISTING AT THAT TIME. THESE CONDITIONS ARE SUBJECT TO RAPID CHANGE DUE TO SHOALING EVENTS. A PRUDENT MARINER SHOULD NOT RELY EXCLUSIVELY ON THE INFORMATION PROVIDED HERE. REQUIRED BY 33 CFR 209.325
  - NAVIGATION AIDS LOCATED WITH DISTRICT SURVEY VESSEL, ACCURACY +/- 3 METERS.
  - FOR THE MOST UP TO DATE INFORMATION PLEASE CHECK OUR WEBSITE AT: [WWW.SAW.USACE.ARMY.MIL](http://WWW.SAW.USACE.ARMY.MIL)

**WAYPOINTS**

Project	Survey Date	DOM_X	DOM_Y
Oregon Inlet East - Waypoint 1	2022-09-27	75° 30.832' W	35° 47.133' N
Oregon Inlet East - Waypoint 2	2022-09-27	75° 31.548' W	35° 46.791' N
Oregon Inlet East - Waypoint 3	2022-09-27	75° 31.764' W	35° 46.563' N
Oregon Inlet East - Waypoint 4	2022-08-04	75° 31.983' W	35° 46.229' N



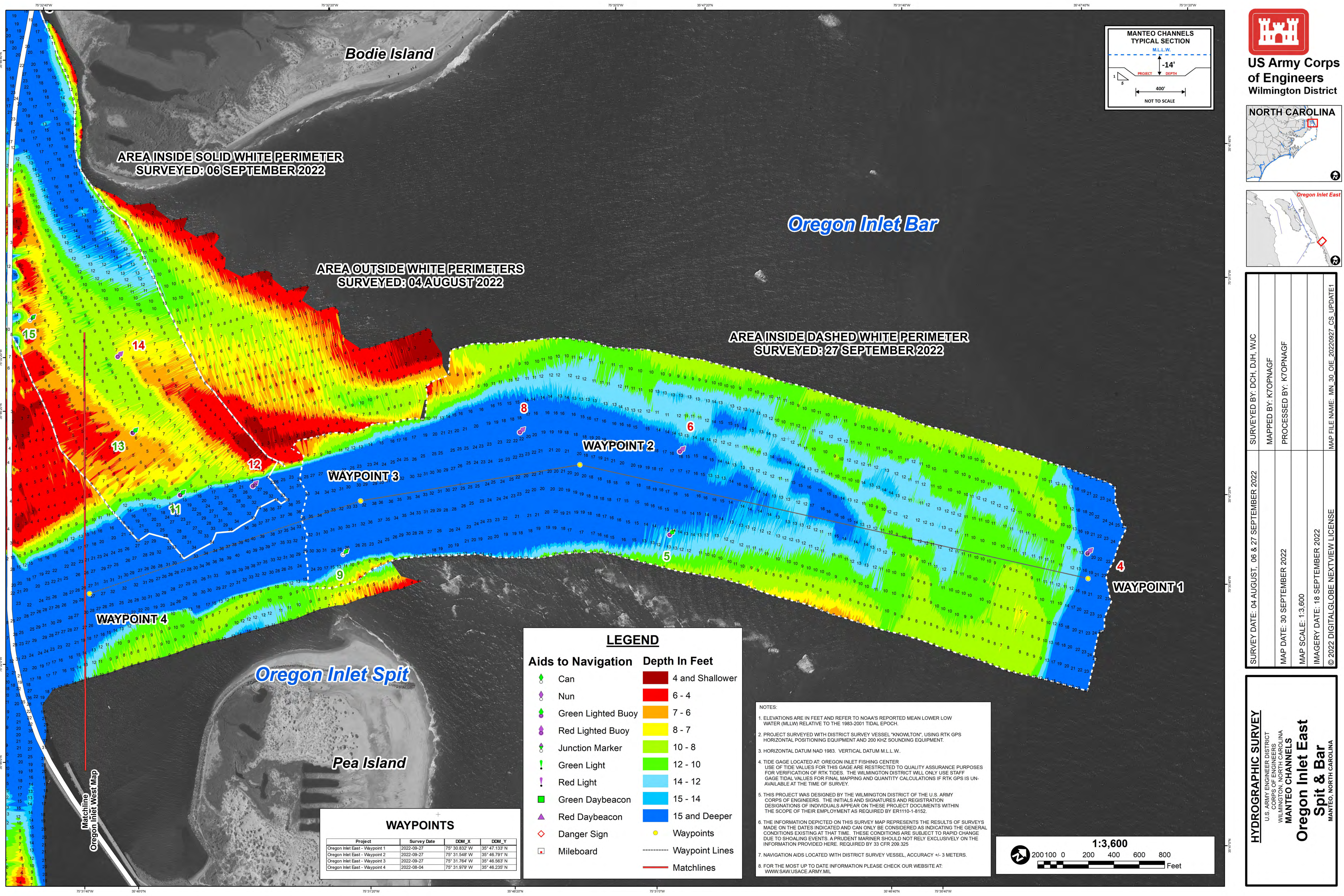
**HYDROGRAPHIC SURVEY**

U.S. ARMY ENGINEER DISTRICT  
CORPS OF ENGINEERS  
WILMINGTON, NORTH CAROLINA  
**MANTEO CHANNELS**

**Oregon Inlet East  
Spit & Bar**

MANTEO, NORTH CAROLINA

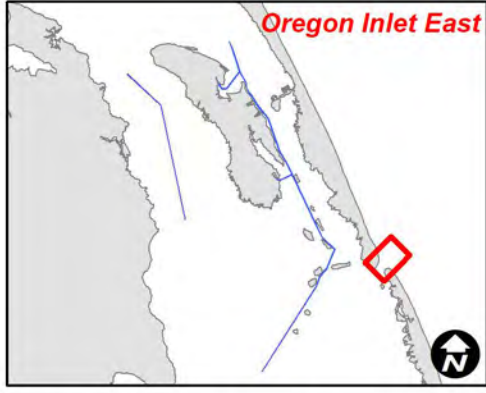






**US Army Corps  
of Engineers**  
Wilmington District

**NORTH CAROLINA**



SURVEY DATE: 04 AUGUST, 06 & 27 SEPTEMBER 2022	SURVEYED BY: DCH, DJH, WJC
MAP DATE: 30 SEPTEMBER 2022	MAPPED BY: KTOPNAGF
MAP SCALE: 1:3,600	PROCESSED BY: KTOPNAGF
IMAGERY DATE: 18 SEPTEMBER 2022	
© 2022 DIGITAL GLOBE NEXTVIEW LICENSE	MAP FILE NAME: MN_30_OIE_20220927_CS_UPDATE1

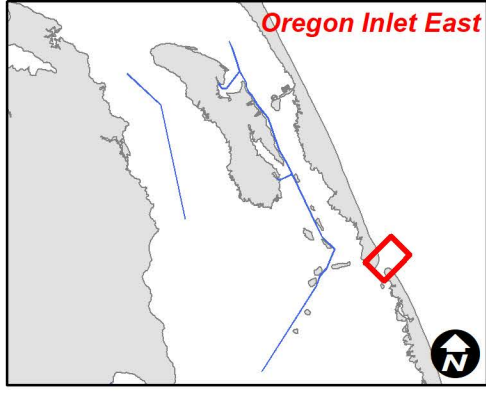
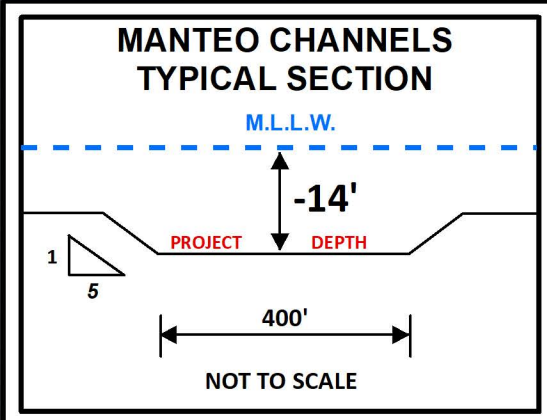
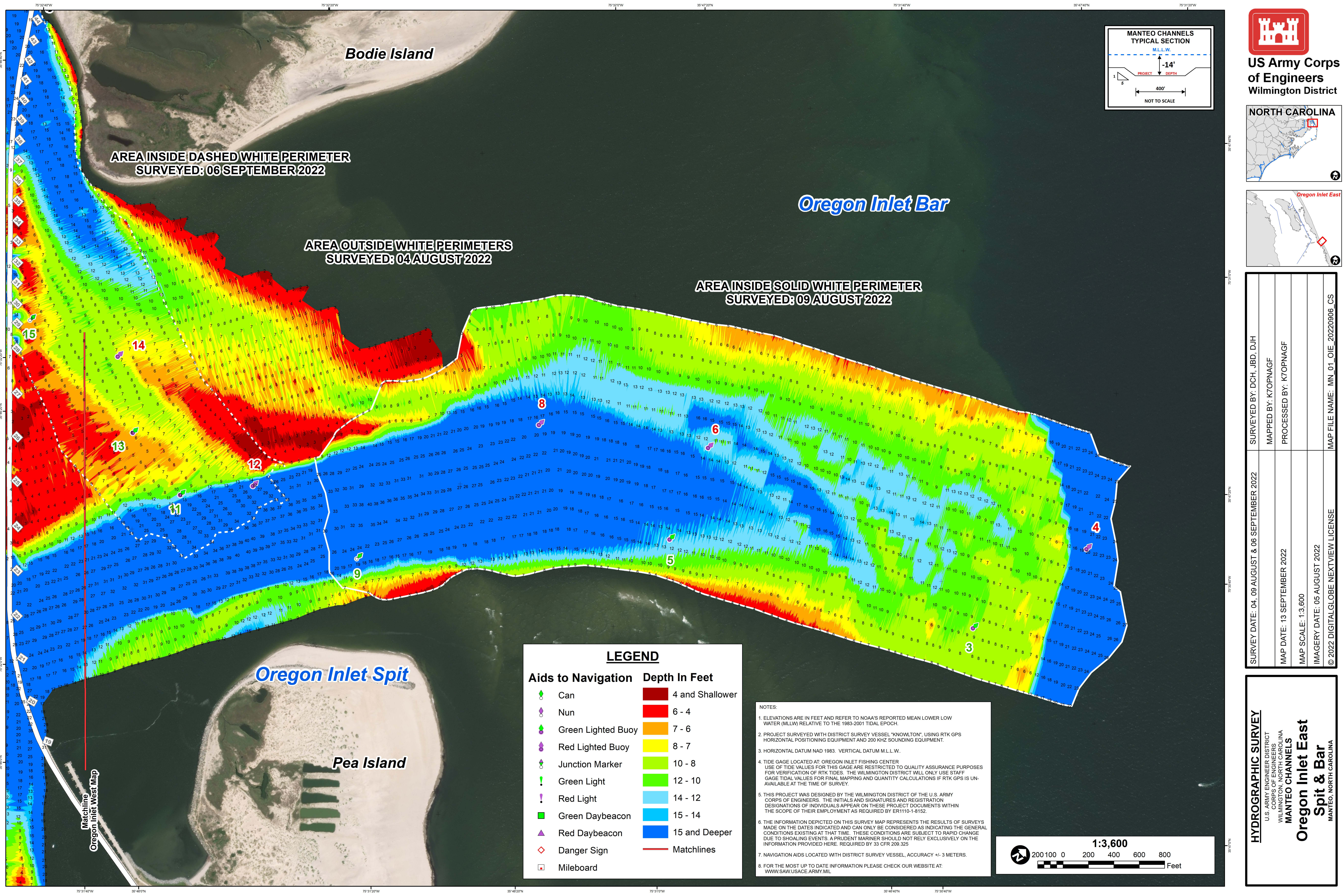
**HYDROGRAPHIC SURVEY**

U.S. ARMY ENGINEER DISTRICT  
CORPS OF ENGINEERS  
WILMINGTON, NORTH CAROLINA  
**MANTEO CHANNELS**

**Oregon Inlet East  
Spit & Bar**

MANTEO, NORTH CAROLINA



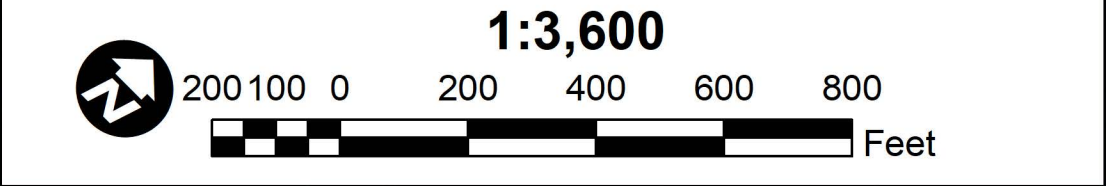


SURVEY DATE: 04, 09 AUGUST & 06 SEPTEMBER 2022	SURVEYED BY: DCH, JBD, DJH
MAP DATE: 13 SEPTEMBER 2022	MAPPED BY: K7OPNAGF
MAP SCALE: 1:3,600	PROCESSED BY: K7OPNAGF
IMAGERY DATE: 05 AUGUST 2022	
© 2022 DIGITALGLOBE NEXTVIEW LICENSE	MAP FILE NAME: MN_01_OIE_20220906_CS

**LEGEND**

Aids to Navigation	Depth In Feet
Can	4 and Shallower
Nun	6 - 4
Green Lighted Buoy	7 - 6
Red Lighted Buoy	8 - 7
Junction Marker	10 - 8
Green Light	12 - 10
Red Light	14 - 12
Green Daybeacon	15 - 14
Red Daybeacon	15 and Deeper
Danger Sign	Matchlines
Mileboard	

- NOTES:
- ELEVATIONS ARE IN FEET AND REFER TO NOAA'S REPORTED MEAN LOWER LOW WATER (MLLW) RELATIVE TO THE 1983-2001 TIDAL EPOCH.
  - PROJECT SURVEYED WITH DISTRICT SURVEY VESSEL "KNOWLTON", USING RTK GPS HORIZONTAL POSITIONING EQUIPMENT AND 200 KHZ SOUNDING EQUIPMENT.
  - HORIZONTAL DATUM NAD 1983. VERTICAL DATUM M.L.L.W.
  - TIDE GAGE LOCATED AT: OREGON INLET FISHING CENTER. USE OF TIDE VALUES FOR THIS GAGE ARE RESTRICTED TO QUALITY ASSURANCE PURPOSES FOR VERIFICATION OF RTK TIDES. THE WILMINGTON DISTRICT WILL ONLY USE STAFF GAGE TIDE VALUES FOR FINAL MAPPING AND QUANTITY CALCULATIONS IF RTK GPS IS UNAVAILABLE AT THE TIME OF SURVEY.
  - THIS PROJECT WAS DESIGNED BY THE WILMINGTON DISTRICT OF THE U.S. ARMY CORPS OF ENGINEERS. THE INITIALS AND SIGNATURES AND REGISTRATION DESIGNATIONS OF INDIVIDUALS APPEAR ON THESE PROJECT DOCUMENTS WITHIN THE SCOPE OF THEIR EMPLOYMENT AS REQUIRED BY ER1110-1-8152.
  - THE INFORMATION DEPICTED ON THIS SURVEY MAP REPRESENTS THE RESULTS OF SURVEYS MADE ON THE DATES INDICATED AND CAN ONLY BE CONSIDERED AS INDICATING THE GENERAL CONDITIONS EXISTING AT THAT TIME. THESE CONDITIONS ARE SUBJECT TO RAPID CHANGE DUE TO SHOALING EVENTS. A PRUDENT MARINER SHOULD NOT RELY EXCLUSIVELY ON THE INFORMATION PROVIDED HERE. REQUIRED BY 33 CFR 209.325
  - NAVIGATION AIDS LOCATED WITH DISTRICT SURVEY VESSEL, ACCURACY +/- 3 METERS.
  - FOR THE MOST UP TO DATE INFORMATION PLEASE CHECK OUR WEBSITE AT: [WWW.SAW.USACE.ARMY.MIL](http://WWW.SAW.USACE.ARMY.MIL)



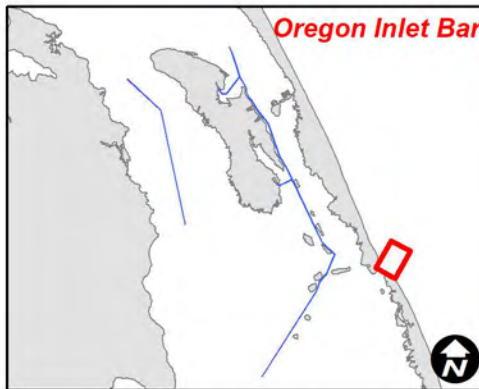
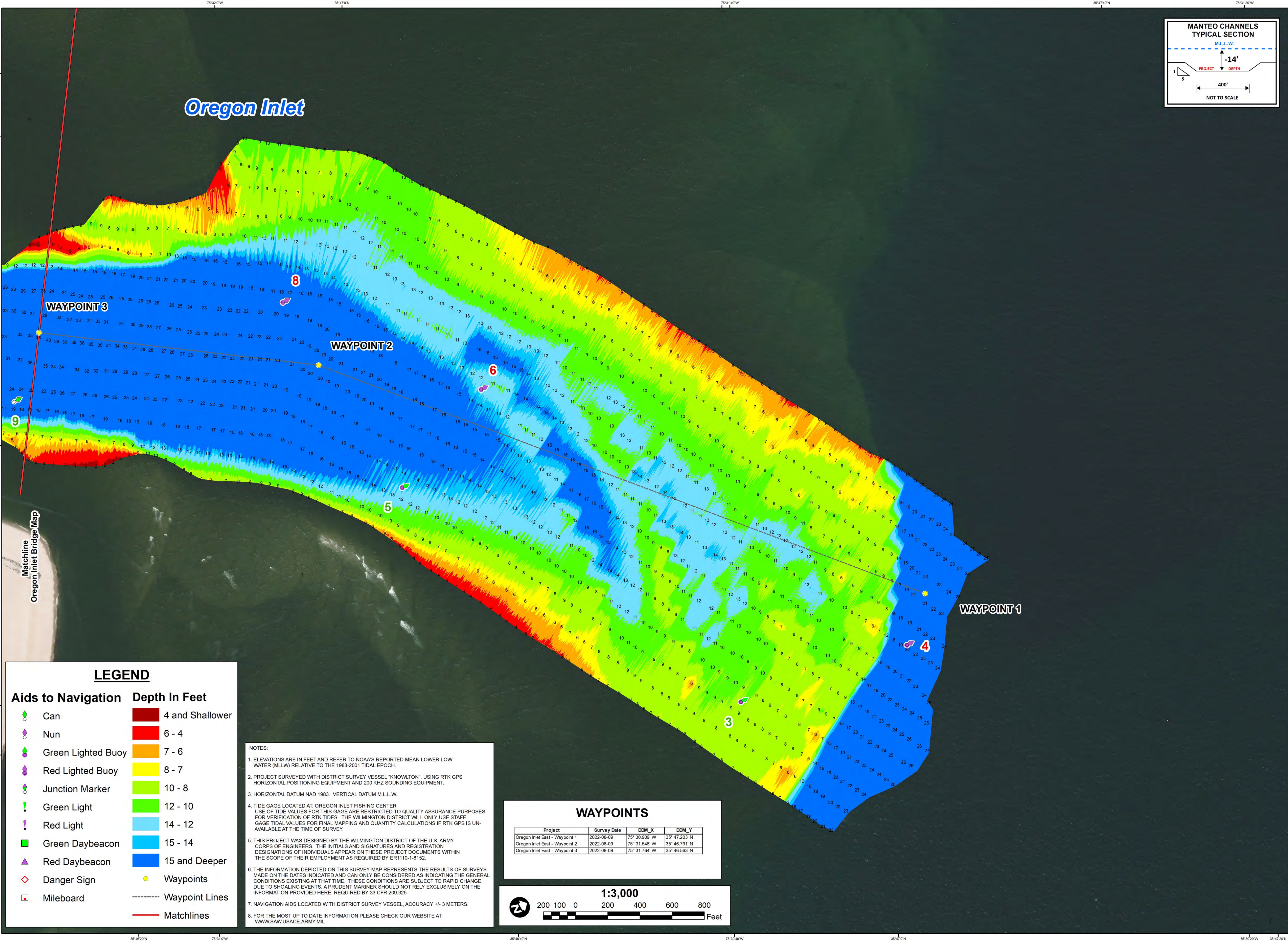
**HYDROGRAPHIC SURVEY**

U.S. ARMY ENGINEER DISTRICT  
CORPS OF ENGINEERS  
WILMINGTON, NORTH CAROLINA  
**MANTEO CHANNELS**

**Oregon Inlet East  
Spit & Bar**

MANTEO, NORTH CAROLINA





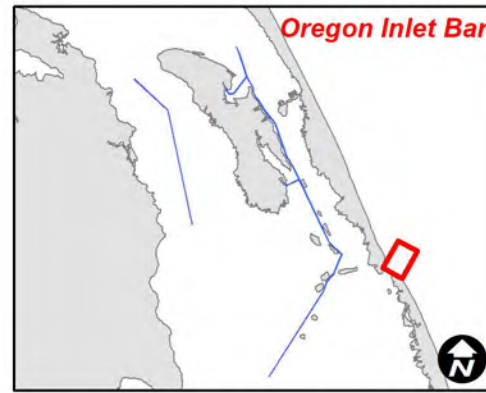
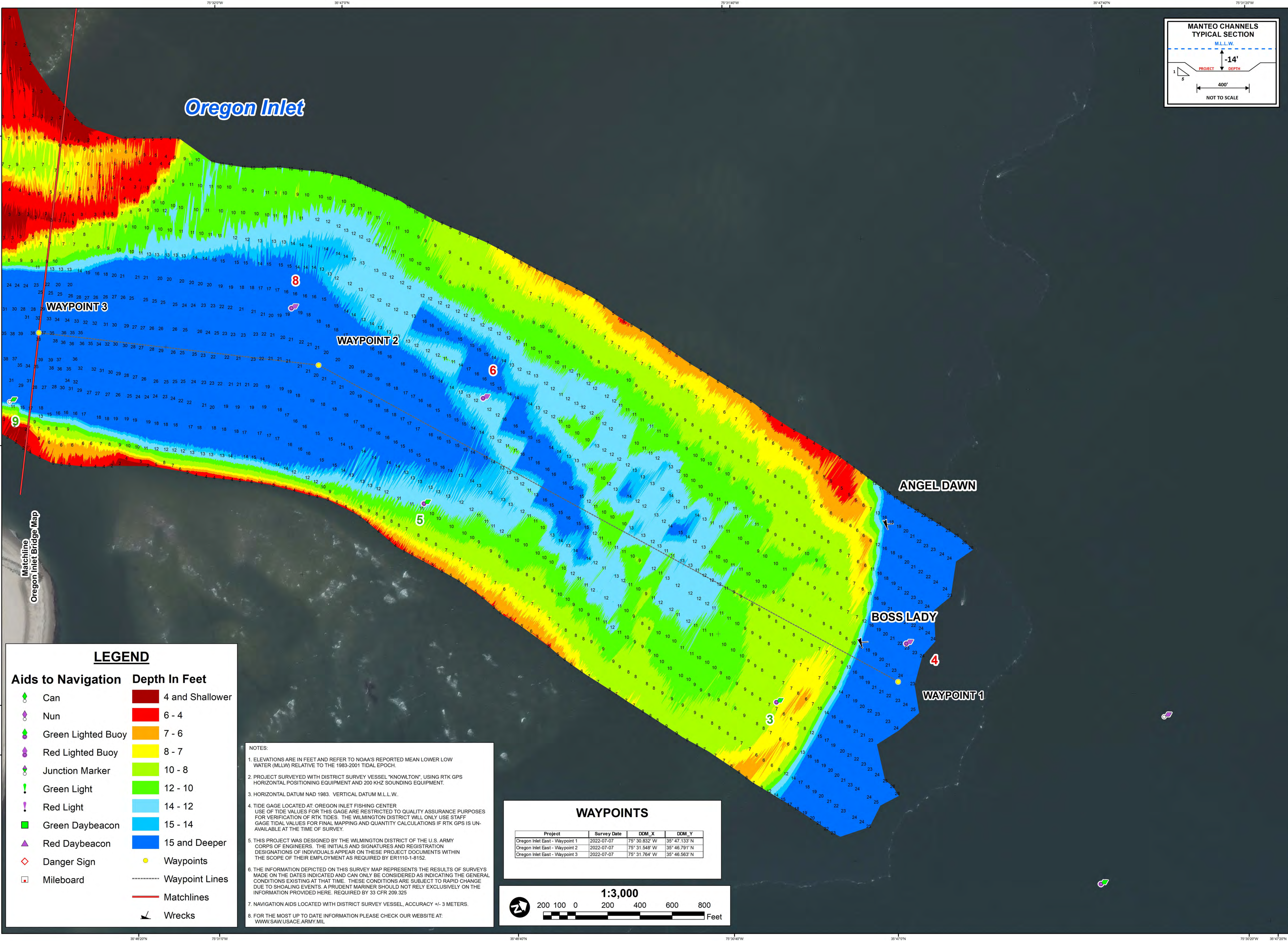
SURVEY DATE: 09 AUGUST 2022	SURVEYED BY: DCH, WJC
MAP DATE: 10 AUGUST 2022	MAPPED BY: KTOPNAGF
MAP SCALE: 1:3,000	PROCESSED BY: KTOPNAGF
IMAGERY DATE: 05 AUGUST 2022	
© 2022 DIGITAL GLOBE NEXTVIEW LICENSE	MAP FILE NAME: MN_30_OIE_20220809_CS

**HYDROGRAPHIC SURVEY**

U.S. ARMY ENGINEER DISTRICT  
CORPS OF ENGINEERS  
WILMINGTON, NORTH CAROLINA  
**MANTEO CHANNELS**  
**Oregon Inlet Bar**

MANTEO, NORTH CAROLINA





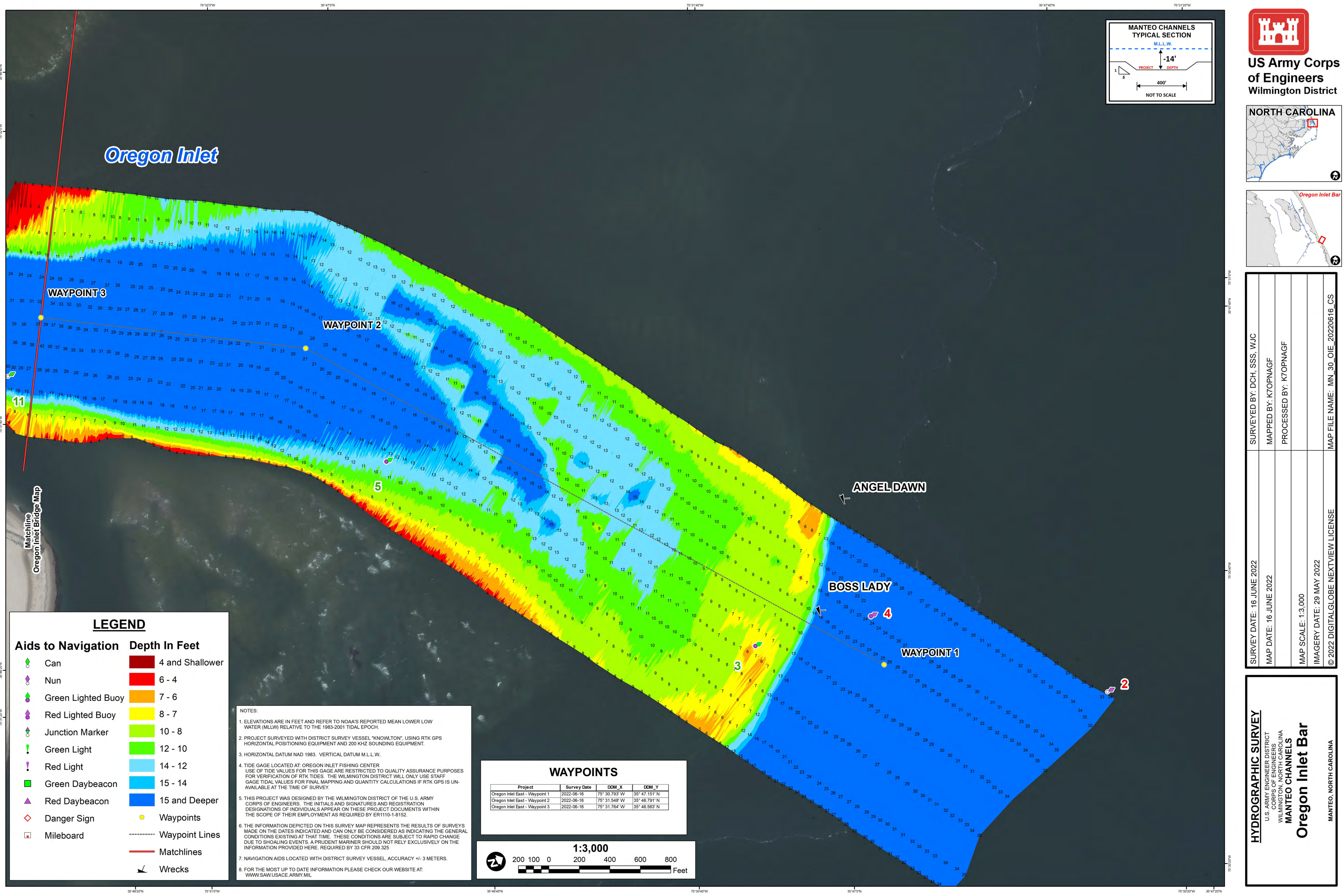
SURVEYED BY: DCH, WJC	SURVEY DATE: 07 JULY 2022
MAPPED BY: KTOPNAGF	MAP DATE: 08 JULY 2022
PROCESSED BY: KTOPNAGF	MAP SCALE: 1:3,000
	IMAGERY DATE: 29 MAY 2022
MAP FILE NAME: MN_30_OIE_20220707_CS	© 2022 DIGITALGLOBE NEXTVIEW LICENSE

**HYDROGRAPHIC SURVEY**

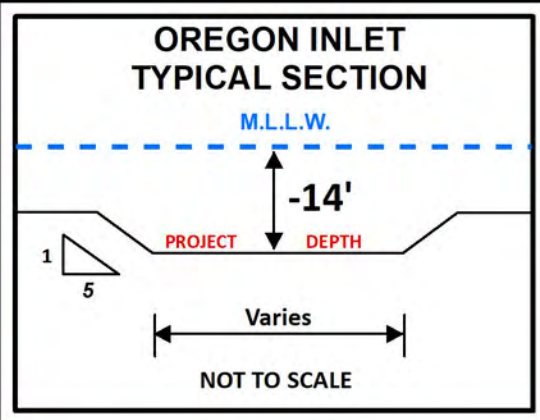
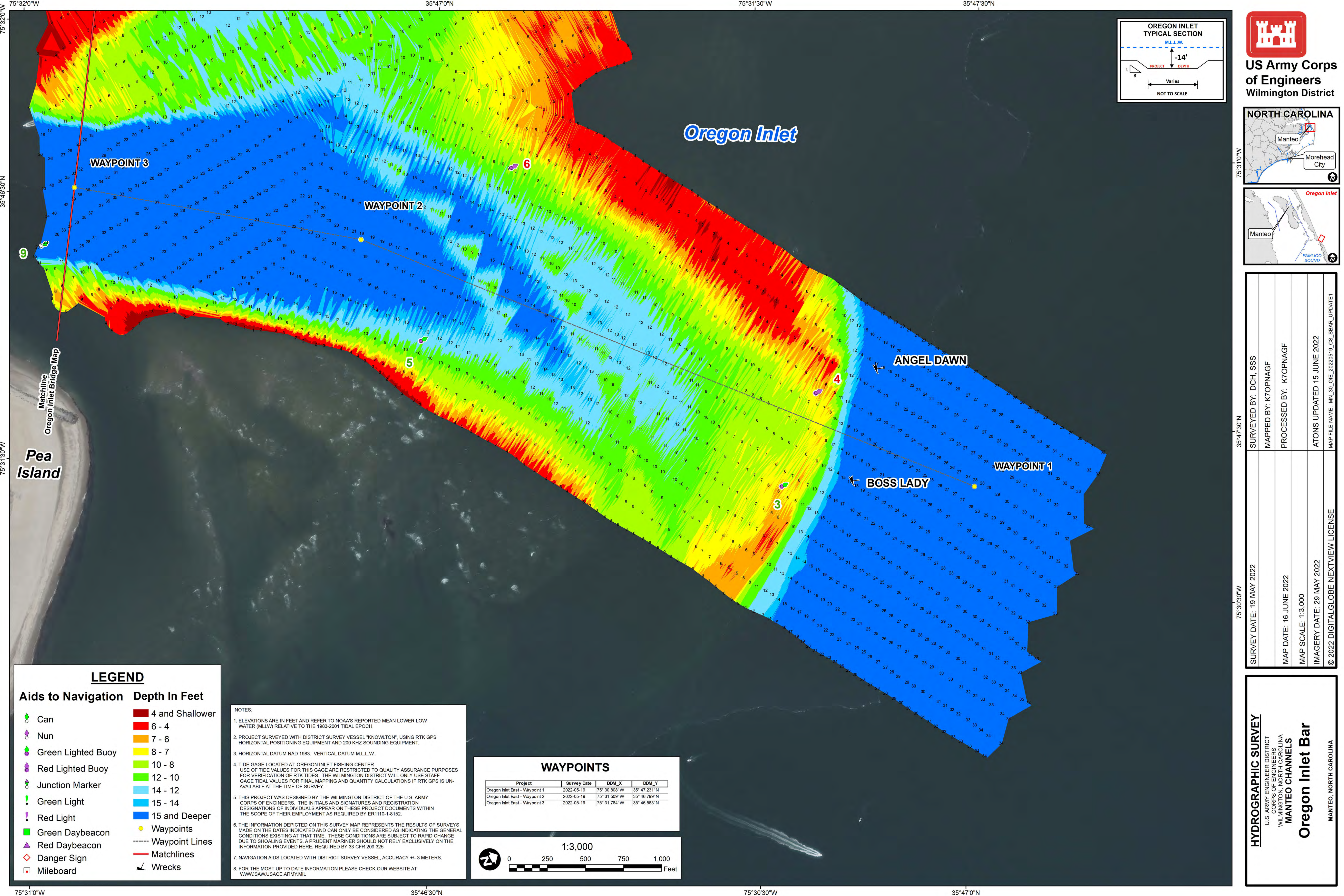
U.S. ARMY ENGINEER DISTRICT  
CORPS OF ENGINEERS  
WILMINGTON, NORTH CAROLINA  
**MANTEO CHANNELS**  
**Oregon Inlet Bar**

MANTEO, NORTH CAROLINA

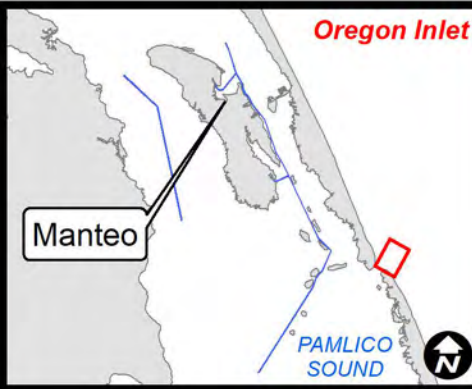








US Army Corps  
of Engineers  
Wilmington District



SURVEY DATE: 19 MAY 2022	SURVEYED BY: DCH, SSS
MAP DATE: 16 JUNE 2022	MAPPED BY: KTOPNAGF
MAP SCALE: 1:3,000	PROCESSED BY: KTOPNAGF
IMAGERY DATE: 29 MAY 2022	ATONS UPDATED 15 JUNE 2022
© 2022 DIGITAL GLOBE NEXTVIEW LICENSE	MAP FILE NAME: MN_30_OIE_20220519_CS_SBAR_UPDATE1

**HYDROGRAPHIC SURVEY**  
U.S. ARMY ENGINEER DISTRICT  
CORPS OF ENGINEERS  
WILMINGTON, NORTH CAROLINA  
**MANTEO CHANNELS**  
**Oregon Inlet Bar**  
MANTEO, NORTH CAROLINA

**LEGEND**

**Aids to Navigation Depth In Feet**

- Can

Nun

Green Lighted Buoy

Red Lighted Buoy

Junction Marker

Green Light

Red Light

Green Daybeacon

Red Daybeacon

Danger Sign

Mileboard
- 4 and Shallower

6 - 4

7 - 6

8 - 7

10 - 8

12 - 10

14 - 12

15 - 14

15 and Deeper

Waypoints

Waypoint Lines

Matchlines

Wrecks

NOTES:

1. ELEVATIONS ARE IN FEET AND REFER TO NOAA'S REPORTED MEAN LOWER LOW WATER (MLLW) RELATIVE TO THE 1983-2001 TIDAL EPOCH.

2. PROJECT SURVEYED WITH DISTRICT SURVEY VESSEL "KNOWLTON", USING RTK GPS HORIZONTAL POSITIONING EQUIPMENT AND 200 KHZ SOUNDING EQUIPMENT.

3. HORIZONTAL DATUM NAD 1983. VERTICAL DATUM M.L.L.W.

4. TIDE GAGE LOCATED AT: OREGON INLET FISHING CENTER  
USE OF TIDE VALUES FOR THIS GAGE ARE RESTRICTED TO QUALITY ASSURANCE PURPOSES FOR VERIFICATION OF RTK TIDES. THE WILMINGTON DISTRICT WILL ONLY USE STAFF GAGE TIDAL VALUES FOR FINAL MAPPING AND QUANTITY CALCULATIONS IF RTK GPS IS UNAVAILABLE AT THE TIME OF SURVEY.

5. THIS PROJECT WAS DESIGNED BY THE WILMINGTON DISTRICT OF THE U.S. ARMY CORPS OF ENGINEERS. THE INITIALS AND SIGNATURES AND REGISTRATION DESIGNATIONS OF INDIVIDUALS APPEAR ON THESE PROJECT DOCUMENTS WITHIN THE SCOPE OF THEIR EMPLOYMENT AS REQUIRED BY ERT110-1-8152.

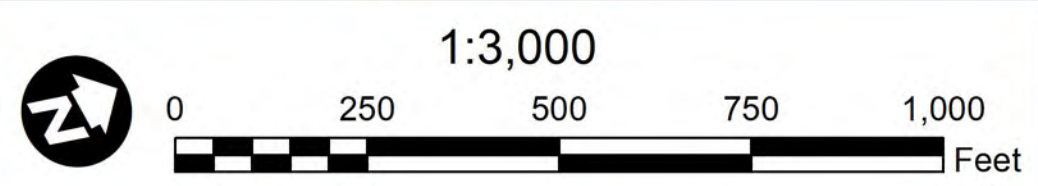
6. THE INFORMATION DEPICTED ON THIS SURVEY MAP REPRESENTS THE RESULTS OF SURVEYS MADE ON THE DATES INDICATED AND CAN ONLY BE CONSIDERED AS INDICATING THE GENERAL CONDITIONS EXISTING AT THAT TIME. THESE CONDITIONS ARE SUBJECT TO RAPID CHANGE DUE TO SHOALING EVENTS. A PRUDENT MARINER SHOULD NOT RELY EXCLUSIVELY ON THE INFORMATION PROVIDED HERE. REQUIRED BY 33 CFR 209.325

7. NAVIGATION AIDS LOCATED WITH DISTRICT SURVEY VESSEL, ACCURACY +/- 3 METERS.

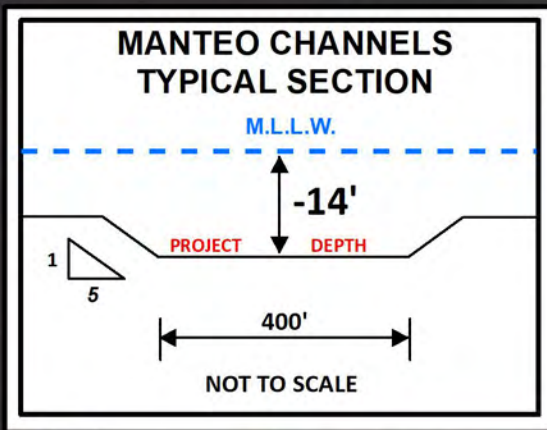
8. FOR THE MOST UP TO DATE INFORMATION PLEASE CHECK OUR WEBSITE AT:  
[WWW.SAW.USACE.ARMY.MIL](http://WWW.SAW.USACE.ARMY.MIL)

**WAYPOINTS**

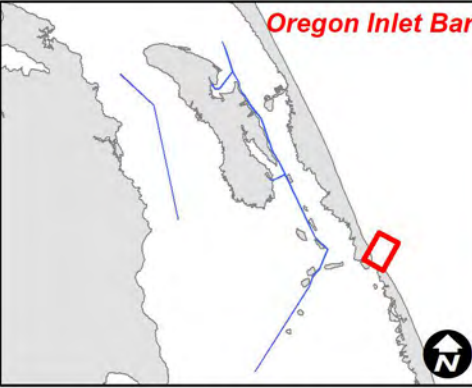
Project	Survey Date	DDM_X	DDM_Y
Oregon Inlet East - Waypoint 1	2022-05-19	75° 30.808' W	35° 47.231' N
Oregon Inlet East - Waypoint 2	2022-05-19	75° 31.509' W	35° 46.799' N
Oregon Inlet East - Waypoint 3	2022-05-19	75° 31.764' W	35° 46.563' N





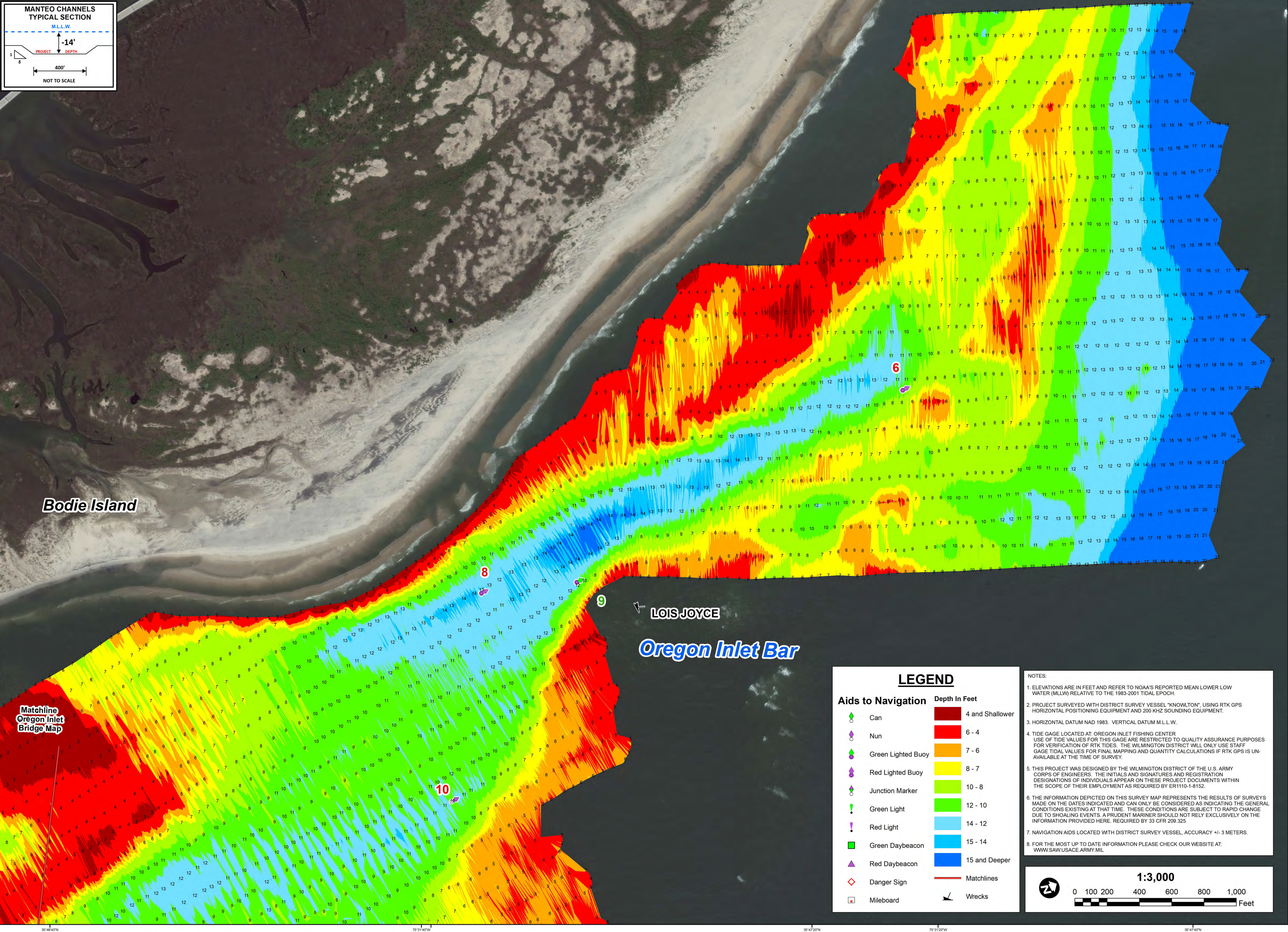


US Army Corps  
of Engineers  
Wilmington District



SURVEY DATE: 19 MAY 2022	SURVEYED BY: DCH, SSS
MAP DATE: 20 MAY 2022	MAPPED BY: KTOPNAGF
MAP SCALE: 1:3,000	PROCESSED BY: KTOPNAGF
IMAGERY DATE: 16 MAY 2022	
© 2022 DIGITAL GLOBE NEXTVIEW LICENSE	MAP FILE NAME: MN_30_OIE_20220519_CS_UPDATE1

**HYDROGRAPHIC SURVEY**  
U.S. ARMY ENGINEER DISTRICT  
CORPS OF ENGINEERS  
WILMINGTON, NORTH CAROLINA  
**MANTEO CHANNELS**  
**Oregon Inlet Bar**  
MANTEO, NORTH CAROLINA

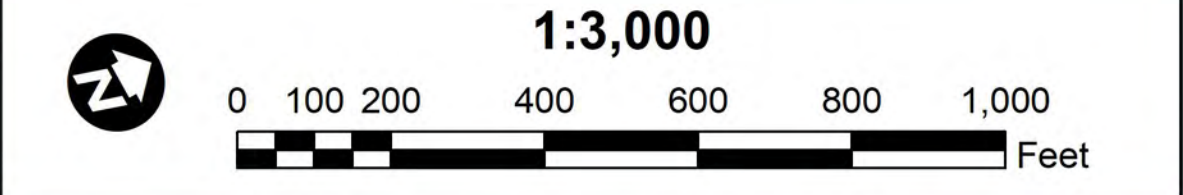


**LEGEND**

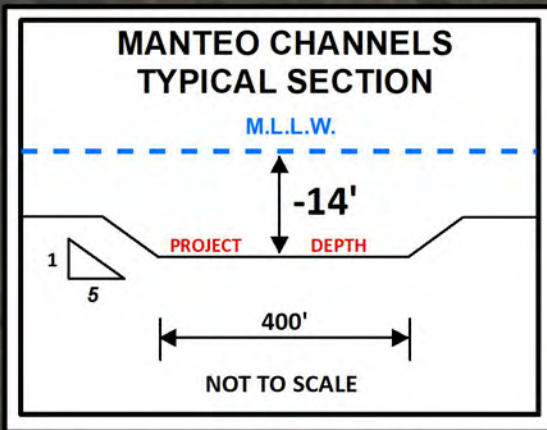
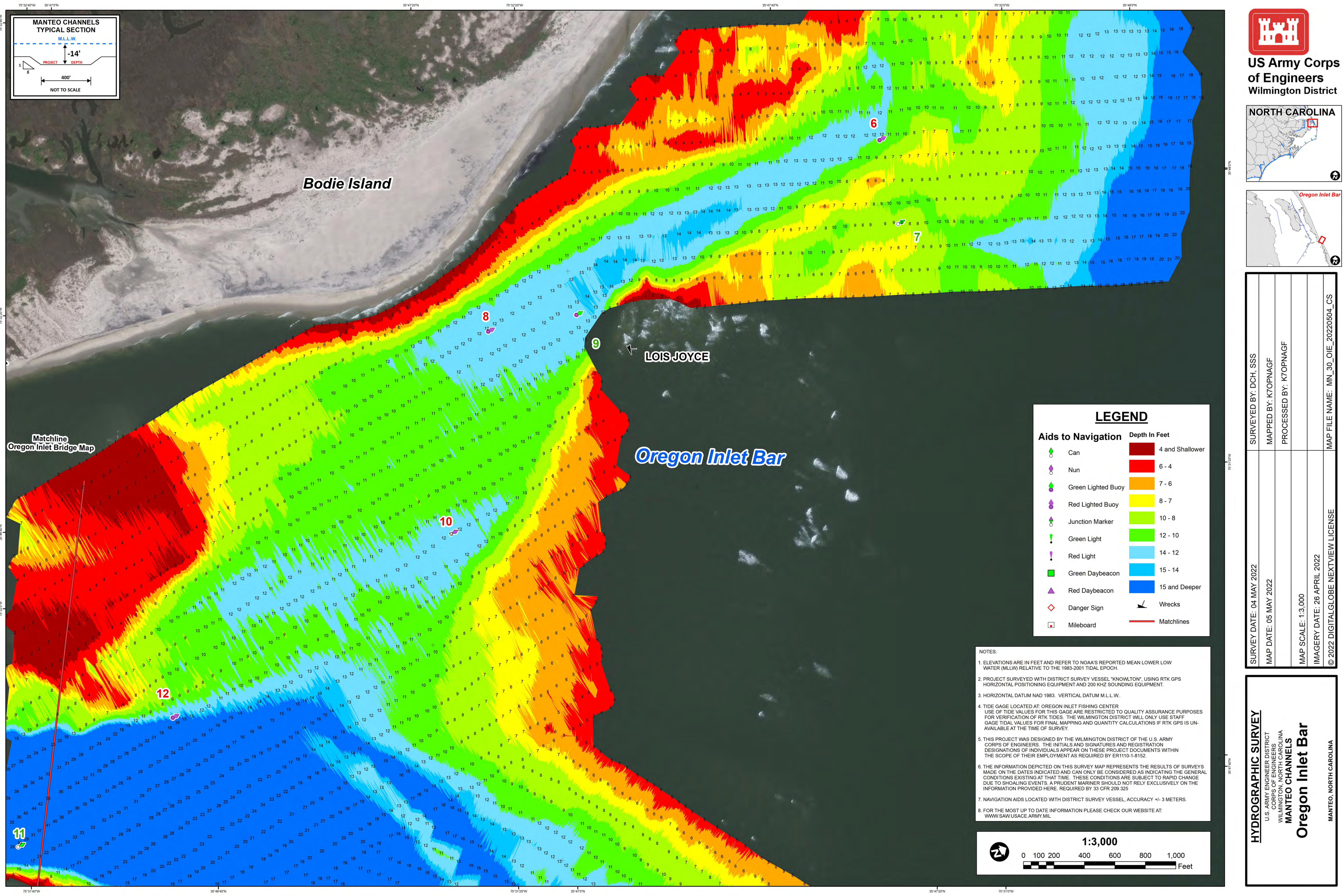
Aids to Navigation	Depth In Feet
Can	4 and Shallower
Nun	6 - 4
Green Lighted Buoy	7 - 6
Red Lighted Buoy	8 - 7
Junction Marker	10 - 8
Green Light	12 - 10
Red Light	14 - 12
Green Daybeacon	15 - 14
Red Daybeacon	15 and Deeper
Danger Sign	Matchlines
Mileboard	Wrecks

NOTES:

- ELEVATIONS ARE IN FEET AND REFER TO NOAA'S REPORTED MEAN LOWER LOW WATER (MLLW) RELATIVE TO THE 1983-2001 TIDAL EPOCH.
- PROJECT SURVEYED WITH DISTRICT SURVEY VESSEL "KNOWLTON", USING RTK GPS HORIZONTAL POSITIONING EQUIPMENT AND 200 KHZ SOUNDING EQUIPMENT.
- HORIZONTAL DATUM NAD 1983. VERTICAL DATUM M.L.L.W.
- TIDE GAGE LOCATED AT: OREGON INLET FISHING CENTER. USE OF TIDE VALUES FOR THIS GAGE ARE RESTRICTED TO QUALITY ASSURANCE PURPOSES FOR VERIFICATION OF RTK TIDES. THE WILMINGTON DISTRICT WILL ONLY USE STAFF GAGE TIDAL VALUES FOR FINAL MAPPING AND QUANTITY CALCULATIONS IF RTK GPS IS UNAVAILABLE AT THE TIME OF SURVEY.
- THIS PROJECT WAS DESIGNED BY THE WILMINGTON DISTRICT OF THE U.S. ARMY CORPS OF ENGINEERS. THE INITIALS AND SIGNATURES AND REGISTRATION DESIGNATIONS OF INDIVIDUALS APPEAR ON THESE PROJECT DOCUMENTS WITHIN THE SCOPE OF THEIR EMPLOYMENT AS REQUIRED BY ERT110-1-8152.
- THE INFORMATION DEPICTED ON THIS SURVEY MAP REPRESENTS THE RESULTS OF SURVEYS MADE ON THE DATES INDICATED AND CAN ONLY BE CONSIDERED AS INDICATING THE GENERAL CONDITIONS EXISTING AT THAT TIME. THESE CONDITIONS ARE SUBJECT TO RAPID CHANGE DUE TO SHOALING EVENTS. A PRUDENT MARINER SHOULD NOT RELY EXCLUSIVELY ON THE INFORMATION PROVIDED HERE, REQUIRED BY 33 CFR 209.325
- NAVIGATION AIDS LOCATED WITH DISTRICT SURVEY VESSEL, ACCURACY +/- 3 METERS.
- FOR THE MOST UP TO DATE INFORMATION PLEASE CHECK OUR WEBSITE AT: [WWW.SAW.USACE.ARMY.MIL](http://WWW.SAW.USACE.ARMY.MIL)



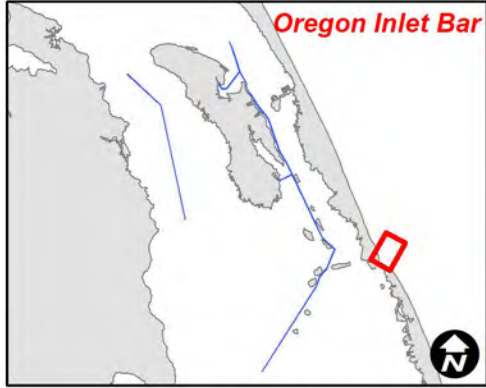






**US Army Corps  
of Engineers**  
Wilmington District

**NORTH CAROLINA**



**LEGEND**

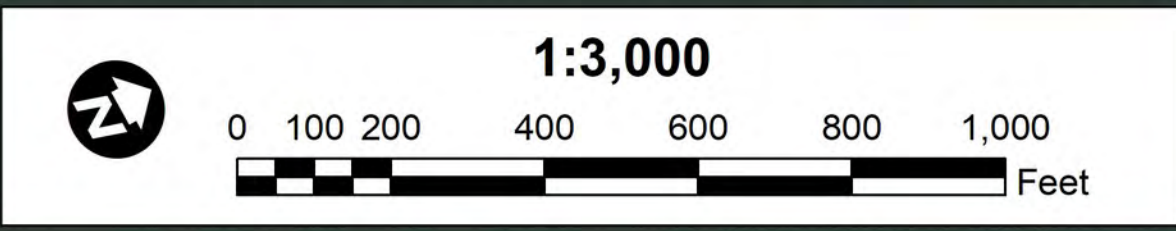
**Aids to Navigation**

- Can
- Nun
- Green Lighted Buoy
- Red Lighted Buoy
- Junction Marker
- Green Light
- Red Light
- Green Daybeacon
- Red Daybeacon
- Danger Sign
- Mileboard

**Depth In Feet**

- 4 and Shallower
- 6 - 4
- 7 - 6
- 8 - 7
- 10 - 8
- 12 - 10
- 14 - 12
- 15 - 14
- 15 and Deeper
- Wrecks
- Matchlines

- NOTES:
- ELEVATIONS ARE IN FEET AND REFER TO NOAA'S REPORTED MEAN LOWER LOW WATER (MLLW) RELATIVE TO THE 1983-2001 TIDAL EPOCH.
  - PROJECT SURVEYED WITH DISTRICT SURVEY VESSEL "KNOWLTON", USING RTK GPS HORIZONTAL POSITIONING EQUIPMENT AND 200 KHZ SOUNDING EQUIPMENT.
  - HORIZONTAL DATUM NAD 1983. VERTICAL DATUM M.L.L.W.
  - TIDE GAGE LOCATED AT: OREGON INLET FISHING CENTER. USE OF TIDE VALUES FOR THIS GAGE ARE RESTRICTED TO QUALITY ASSURANCE PURPOSES FOR VERIFICATION OF RTK TIDES. THE WILMINGTON DISTRICT WILL ONLY USE STAFF GAGE TIDAL VALUES FOR FINAL MAPPING AND QUANTITY CALCULATIONS IF RTK GPS IS UNAVAILABLE AT THE TIME OF SURVEY.
  - THIS PROJECT WAS DESIGNED BY THE WILMINGTON DISTRICT OF THE U.S. ARMY CORPS OF ENGINEERS. THE INITIALS AND SIGNATURES AND REGISTRATION DESIGNATIONS OF INDIVIDUALS APPEAR ON THESE PROJECT DOCUMENTS WITHIN THE SCOPE OF THEIR EMPLOYMENT AS REQUIRED BY ERT110-1-8152.
  - THE INFORMATION DEPICTED ON THIS SURVEY MAP REPRESENTS THE RESULTS OF SURVEYS MADE ON THE DATES INDICATED AND CAN ONLY BE CONSIDERED AS INDICATING THE GENERAL CONDITIONS EXISTING AT THAT TIME. THESE CONDITIONS ARE SUBJECT TO RAPID CHANGE DUE TO SHOALING EVENTS. A PRUDENT MARINER SHOULD NOT RELY EXCLUSIVELY ON THE INFORMATION PROVIDED HERE, REQUIRED BY 33 CFR 209.325
  - NAVIGATION AIDS LOCATED WITH DISTRICT SURVEY VESSEL, ACCURACY +/- 3 METERS.
  - FOR THE MOST UP TO DATE INFORMATION PLEASE CHECK OUR WEBSITE AT: [WWW.SAW.USACE.ARMY.MIL](http://WWW.SAW.USACE.ARMY.MIL)



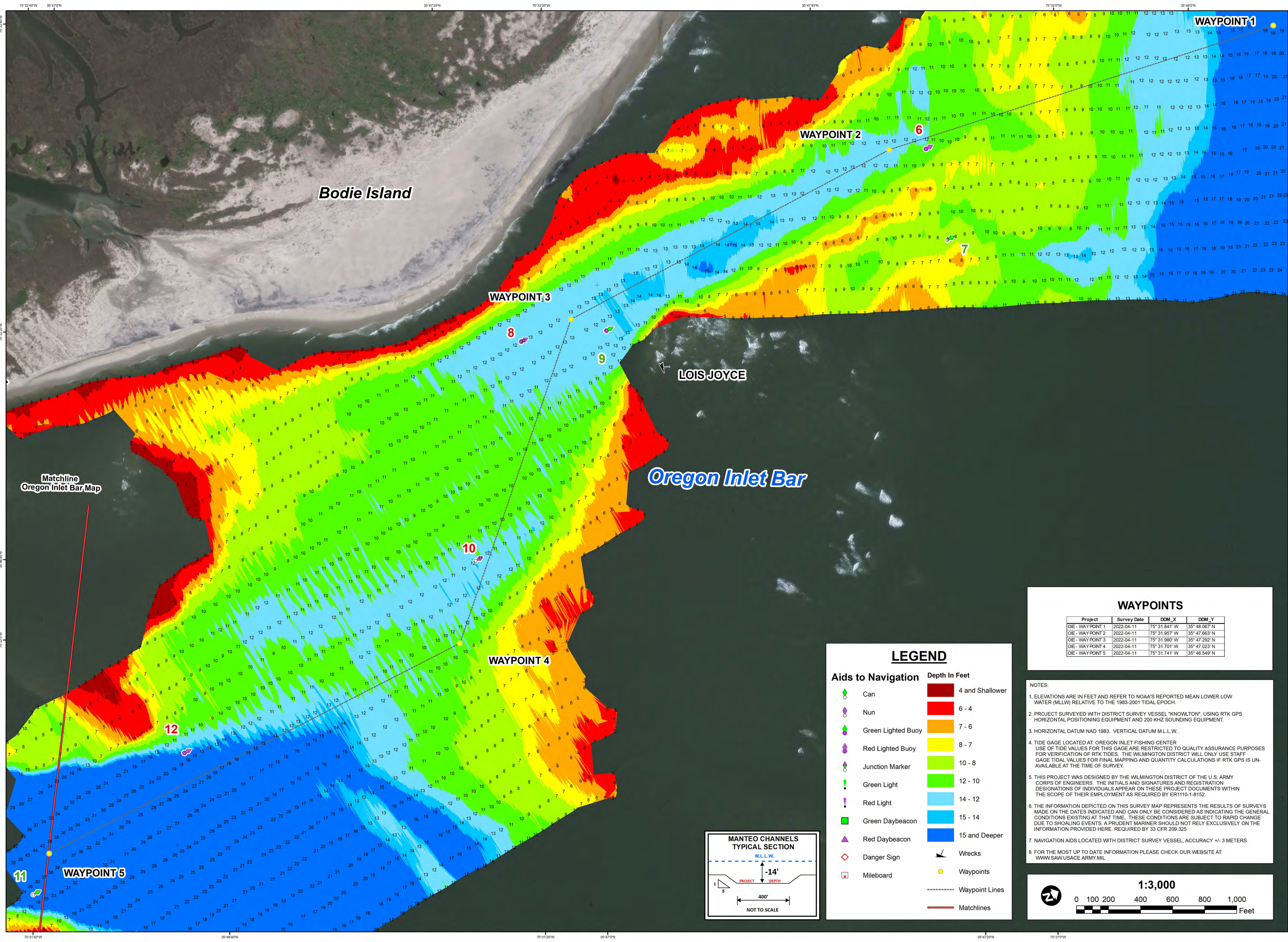
SURVEY DATE: 04 MAY 2022	SURVEYED BY: DCH, SSS
MAP DATE: 05 MAY 2022	MAPPED BY: KTOPNAGF
	PROCESSED BY: KTOPNAGF
MAP SCALE: 1:3,000	
IMAGERY DATE: 26 APRIL 2022	
© 2022 DIGITALGLOBE NEXTVIEW LICENSE	MAP FILE NAME: MN_30_OIE_20220504_CS

**HYDROGRAPHIC SURVEY**

U.S. ARMY ENGINEER DISTRICT  
CORPS OF ENGINEERS  
WILMINGTON, NORTH CAROLINA  
**MANTEO CHANNELS**  
**Oregon Inlet Bar**

MANTEO, NORTH CAROLINA

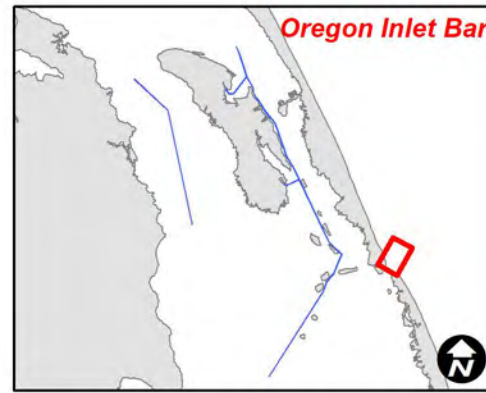






**US Army Corps  
of Engineers**  
Wilmington District

**NORTH CAROLINA**




SURVEYED BY: SSS, CAB	SURVEY DATE: 26 APRIL 2022
MAPPED BY: KTOPNAGF	MAP DATE: 02 MAY 2022
PROCESSED BY: KTOPNAGF	
	MAP SCALE: 1:3,000
	IMAGERY DATE: 26 APRIL 2022
	© 2022 DIGITALGLOBE NEXTVIEW LICENSE
	MAP FILE NAME: MN_30_OIE_20220411_CS_UPDATE1

**WAYPOINTS**

Project	Survey Date	DDM_X	DDM_Y
OIE - WAYPOINT 1	2022-04-11	75° 31.841' W	35° 48.067' N
OIE - WAYPOINT 2	2022-04-11	75° 31.957' W	35° 47.663' N
OIE - WAYPOINT 3	2022-04-11	75° 31.980' W	35° 47.292' N
OIE - WAYPOINT 4	2022-04-11	75° 31.701' W	35° 47.023' N
OIE - WAYPOINT 5	2022-04-11	75° 31.741' W	35° 46.549' N

**NOTES:**

- ELEVATIONS ARE IN FEET AND REFER TO NOAA'S REPORTED MEAN LOWER LOW WATER (MLLW) RELATIVE TO THE 1983-2001 TIDAL EPOCH.
- PROJECT SURVEYED WITH DISTRICT SURVEY VESSEL "KNOWLTON", USING RTK GPS HORIZONTAL POSITIONING EQUIPMENT AND 200 KHZ SOUNDING EQUIPMENT.
- HORIZONTAL DATUM NAD 1983. VERTICAL DATUM M.L.L.W.
- TIDE GAGE LOCATED AT: OREGON INLET FISHING CENTER. USE OF TIDE VALUES FOR THIS GAGE ARE RESTRICTED TO QUALITY ASSURANCE PURPOSES FOR VERIFICATION OF RTK TIDES. THE WILMINGTON DISTRICT WILL ONLY USE STAFF GAGE TIDE VALUES FOR FINAL MAPPING AND QUANTITY CALCULATIONS IF RTK GPS IS UNAVAILABLE AT THE TIME OF SURVEY.
- THIS PROJECT WAS DESIGNED BY THE WILMINGTON DISTRICT OF THE U.S. ARMY CORPS OF ENGINEERS. THE INITIALS AND SIGNATURES AND REGISTRATION DESIGNATIONS OF INDIVIDUALS APPEAR ON THESE PROJECT DOCUMENTS WITHIN THE SCOPE OF THEIR EMPLOYMENT AS REQUIRED BY ERT110-1-8152.
- THE INFORMATION DEPICTED ON THIS SURVEY MAP REPRESENTS THE RESULTS OF SURVEYS MADE ON THE DATES INDICATED AND CAN ONLY BE CONSIDERED AS INDICATING THE GENERAL CONDITIONS EXISTING AT THAT TIME. THESE CONDITIONS ARE SUBJECT TO RAPID CHANGE DUE TO SHOALING EVENTS. A PRUDENT MARINER SHOULD NOT RELY EXCLUSIVELY ON THE INFORMATION PROVIDED HERE, REQUIRED BY 33 CFR 209.325
- NAVIGATION AIDS LOCATED WITH DISTRICT SURVEY VESSEL, ACCURACY +/- 3 METERS.
- FOR THE MOST UP TO DATE INFORMATION PLEASE CHECK OUR WEBSITE AT: [WWW.SAW.USACE.ARMY.MIL](http://WWW.SAW.USACE.ARMY.MIL)



**1:3,000**  
0 100 200 400 600 800 1,000  
Feet

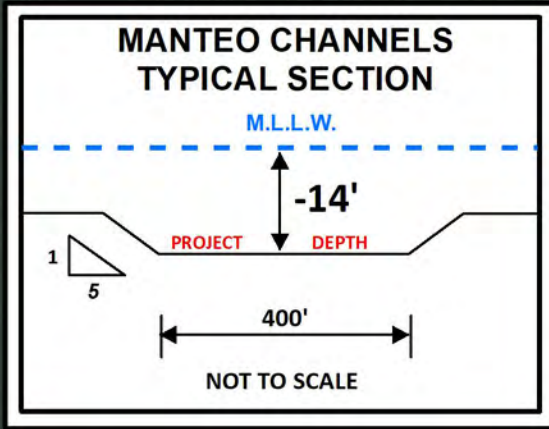
**LEGEND**

**Aids to Navigation**

- Can
- Nun
- Green Lighted Buoy
- Red Lighted Buoy
- Junction Marker
- Green Light
- Red Light
- Green Daybeacon
- Red Daybeacon
- Danger Sign
- Mileboard

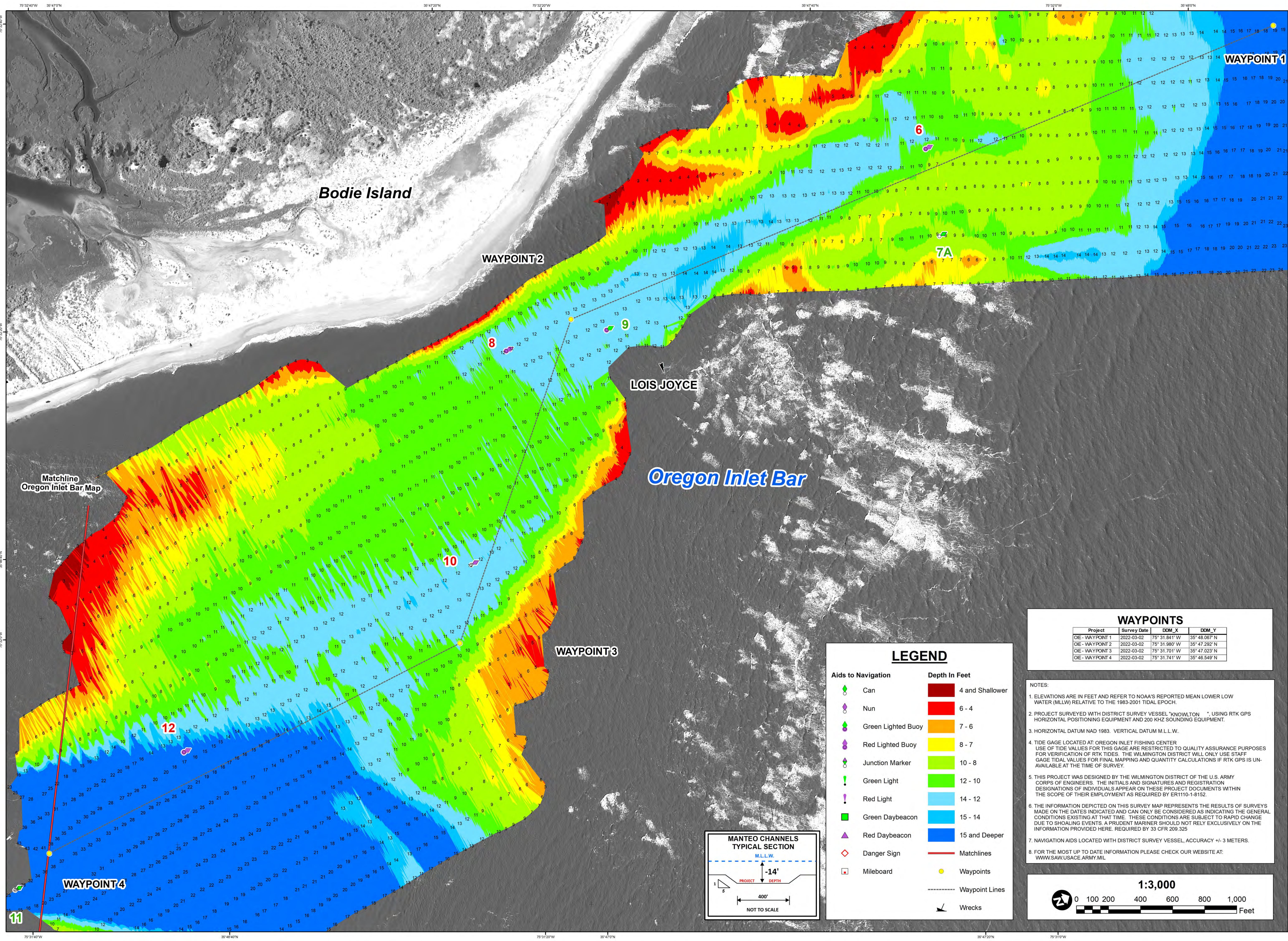
**Depth In Feet**

- 4 and Shallower
- 6 - 4
- 7 - 6
- 8 - 7
- 10 - 8
- 12 - 10
- 14 - 12
- 15 - 14
- 15 and Deeper
- Wrecks
- Waypoints
- Waypoint Lines
- Matchlines

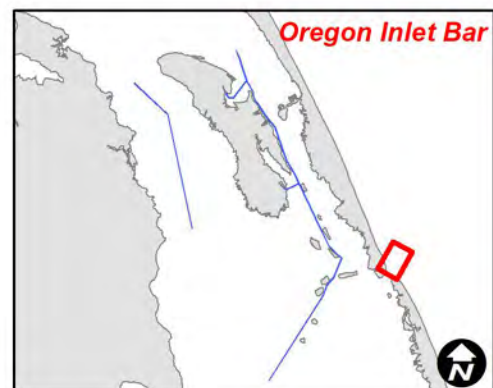


**HYDROGRAPHIC SURVEY**  
U.S. ARMY ENGINEER DISTRICT  
CORPS OF ENGINEERS  
WILMINGTON, NORTH CAROLINA  
**MANTEO CHANNELS**  
**Oregon Inlet Bar**  
MANTEO, NORTH CAROLINA





US Army Corps  
of Engineers  
Wilmington District



SURVEY DATE: 02 MARCH 2022	SURVEYED BY: SSS, CAB
MAP DATE: 02 MARCH 2022	MAPPED BY: KTOPNLAC
MAP SCALE: 1:3,000	PROCESSED BY: KTOPNLAC
IMAGERY DATE: 18 JANUARY 2022	
© 2022 DIGITALGLOBE NEXTVIEW LICENSE	MAP FILE NAME: MN_30_OIE_20220302_CS

HYDROGRAPHIC SURVEY

U.S. ARMY ENGINEER DISTRICT  
CORPS OF ENGINEERS  
WILMINGTON, NORTH CAROLINA

MANTEO CHANNELS

Oregon Inlet Bar

MANTEO, NORTH CAROLINA

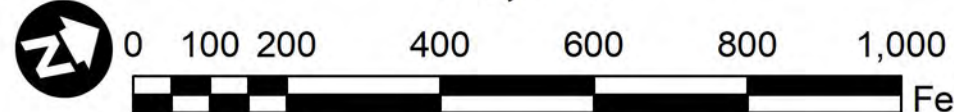
### WAYPOINTS

Project	Survey Date	DDM_X	DDM_Y
OIE - WAYPOINT 1	2022-03-02	75° 31.841' W	35° 48.067' N
OIE - WAYPOINT 2	2022-03-02	75° 31.880' W	35° 47.292' N
OIE - WAYPOINT 3	2022-03-02	75° 31.701' W	35° 47.023' N
OIE - WAYPOINT 4	2022-03-02	75° 31.741' W	35° 46.549' N

### NOTES:

- ELEVATIONS ARE IN FEET AND REFER TO NOAA'S REPORTED MEAN LOWER LOW WATER (MLLW) RELATIVE TO THE 1983-2001 TIDAL EPOCH.
- PROJECT SURVEYED WITH DISTRICT SURVEY VESSEL "KNOWLTON". USING RTK GPS HORIZONTAL POSITIONING EQUIPMENT AND 200 KHZ SOUNDING EQUIPMENT.
- HORIZONTAL DATUM NAD 1983. VERTICAL DATUM M.L.L.W.
- TIDE GAGE LOCATED AT OREGON INLET FISHING CENTER. USE OF TIDE VALUES FOR THIS GAGE ARE RESTRICTED TO QUALITY ASSURANCE PURPOSES FOR VERIFICATION OF RTK TIDES. THE WILMINGTON DISTRICT WILL ONLY USE STAFF GAGE TIDAL VALUES FOR FINAL MAPPING AND QUANTITY CALCULATIONS IF RTK GPS IS UNAVAILABLE AT THE TIME OF SURVEY.
- THIS PROJECT WAS DESIGNED BY THE WILMINGTON DISTRICT OF THE U.S. ARMY CORPS OF ENGINEERS. THE INITIALS AND SIGNATURES AND REGISTRATION DESIGNATIONS OF INDIVIDUALS APPEAR ON THESE PROJECT DOCUMENTS WITHIN THE SCOPE OF THEIR EMPLOYMENT AS REQUIRED BY ERI110-1-8152.
- THE INFORMATION DEPICTED ON THIS SURVEY MAP REPRESENTS THE RESULTS OF SURVEYS MADE ON THE DATES INDICATED AND CAN ONLY BE CONSIDERED AS INDICATING THE GENERAL CONDITIONS EXISTING AT THAT TIME. THESE CONDITIONS ARE SUBJECT TO RAPID CHANGE DUE TO SHOALING EVENTS. A PRUDENT MARINER SHOULD NOT RELY EXCLUSIVELY ON THE INFORMATION PROVIDED HERE. REQUIRED BY 33 CFR 209.325.
- NAVIGATION AIDS LOCATED WITH DISTRICT SURVEY VESSEL, ACCURACY +/- 3 METERS.
- FOR THE MOST UP TO DATE INFORMATION PLEASE CHECK OUR WEBSITE AT: [WWW.SAWUSACE.ARMY.MIL](http://WWW.SAWUSACE.ARMY.MIL)

1:3,000



### LEGEND

#### Aids to Navigation

- Can
- Nun
- Green Lighted Buoy
- Red Lighted Buoy
- Junction Marker
- Green Light
- Red Light
- Green Daybeacon
- Red Daybeacon
- Danger Sign
- Mileboard

#### Depth In Feet

- 4 and Shallower
- 6 - 4
- 7 - 6
- 8 - 7
- 10 - 8
- 12 - 10
- 14 - 12
- 15 - 14
- 15 and Deeper
- Matchlines
- Waypoints
- Waypoint Lines
- Wrecks

### MANTEO CHANNELS TYPICAL SECTION

