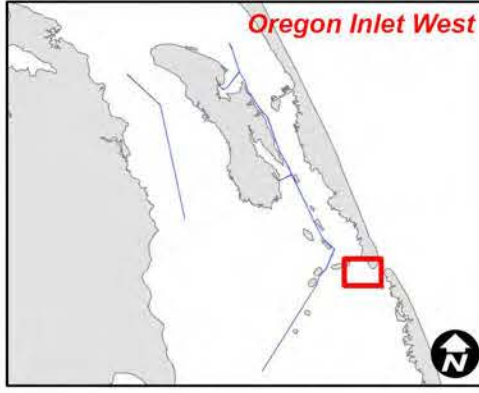
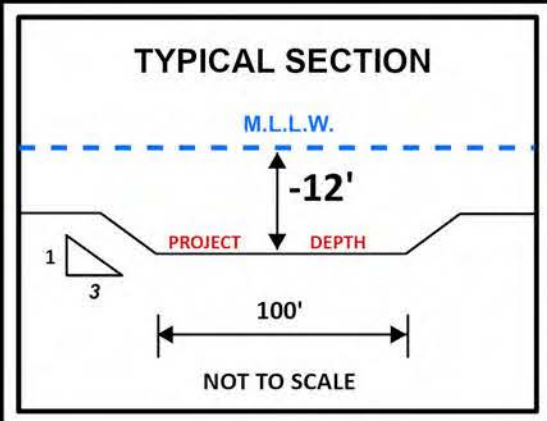
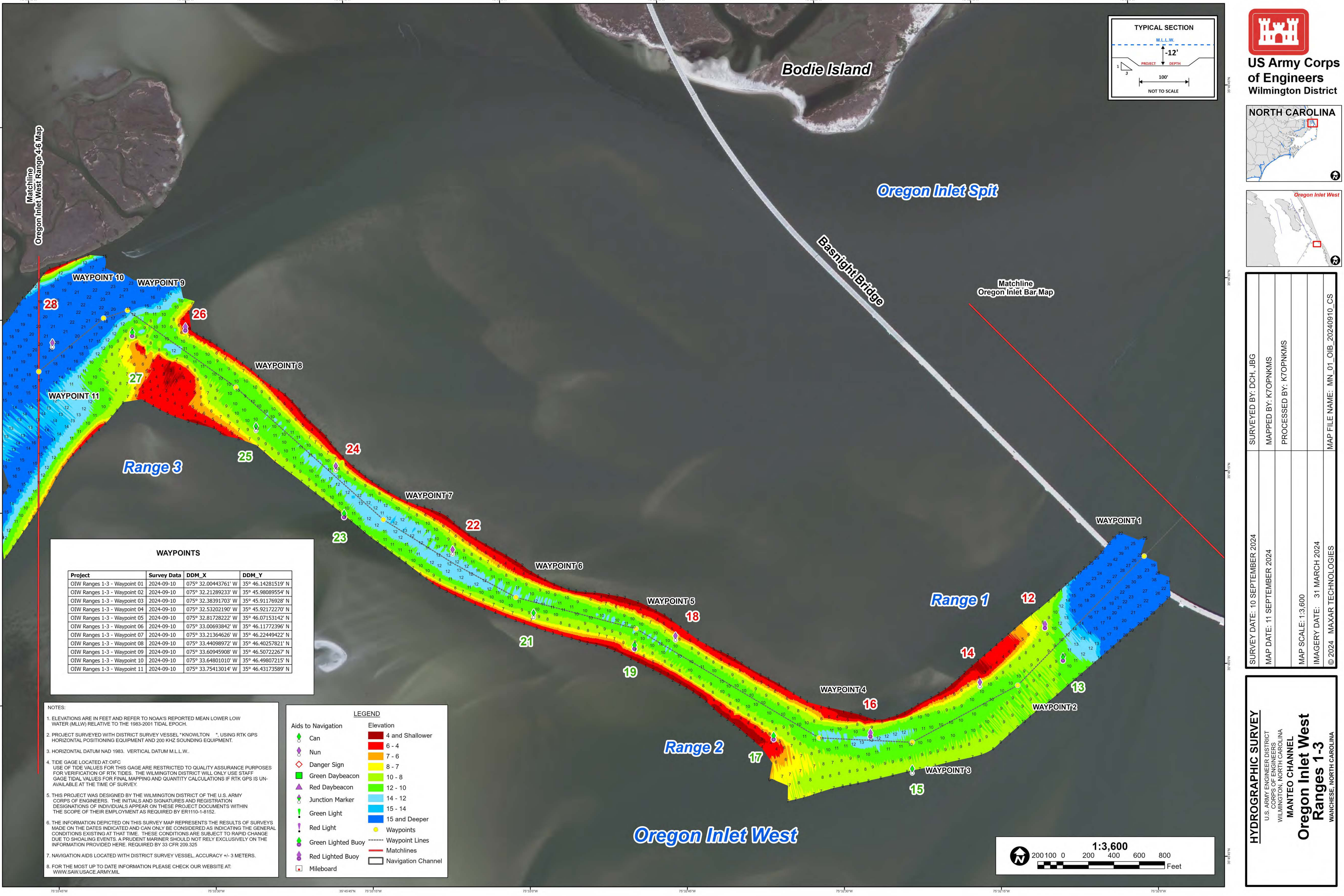


SURVEYED BY: JCC, JBG	SURVEY DATE: 10 OCTOBER 2024
MAPPED BY: K7OPNAGF	MAP DATE: 11 OCTOBER 2024
PROCESSED BY: K7OPNAGF	
	MAP SCALE: 1:3,600
	IMAGERY DATE: 31 MARCH 2024
MAP FILE NAME: MN_01_OIB_20241010_CS	© 2024 MAXAR TECHNOLOGIES



SURVEY DATE: 10 SEPTEMBER 2024	SURVEYED BY: DCH, JBG
MAP DATE: 11 SEPTEMBER 2024	MAPPED BY: K7OPNKM5
	PROCESSED BY: K7OPNKM5
MAP SCALE: 1:3,600	
IMAGERY DATE: 31 MARCH 2024	
© 2024 MAXAR TECHNOLOGIES	MAP FILE NAME: MN_01_OIB_20240910_CS

WAYPOINTS

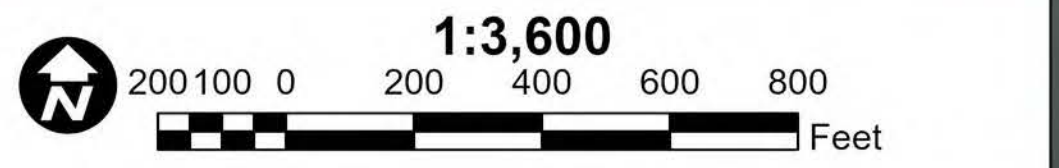
Project	Survey Data	DDM_X	DDM_Y
OIW Ranges 1-3 - Waypoint 01	2024-09-10	075° 32.00443761' W	35° 46.14281519' N
OIW Ranges 1-3 - Waypoint 02	2024-09-10	075° 32.21289233' W	35° 45.98089554' N
OIW Ranges 1-3 - Waypoint 03	2024-09-10	075° 32.36391703' W	35° 45.91176928' N
OIW Ranges 1-3 - Waypoint 04	2024-09-10	075° 32.53202190' W	35° 45.92172270' N
OIW Ranges 1-3 - Waypoint 05	2024-09-10	075° 32.81728222' W	35° 46.07153142' N
OIW Ranges 1-3 - Waypoint 06	2024-09-10	075° 33.00693842' W	35° 46.11772396' N
OIW Ranges 1-3 - Waypoint 07	2024-09-10	075° 33.21364626' W	35° 46.22449422' N
OIW Ranges 1-3 - Waypoint 08	2024-09-10	075° 33.44098972' W	35° 46.40257821' N
OIW Ranges 1-3 - Waypoint 09	2024-09-10	075° 33.60945908' W	35° 46.50722267' N
OIW Ranges 1-3 - Waypoint 10	2024-09-10	075° 33.64801010' W	35° 46.49807215' N
OIW Ranges 1-3 - Waypoint 11	2024-09-10	075° 33.75413014' W	35° 46.43173589' N

NOTES:

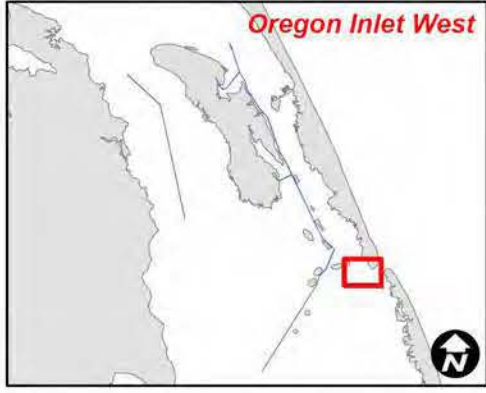
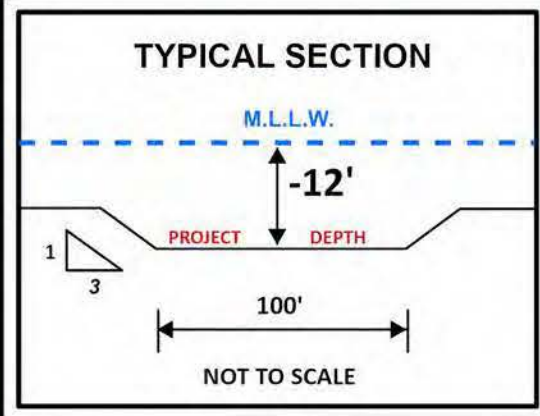
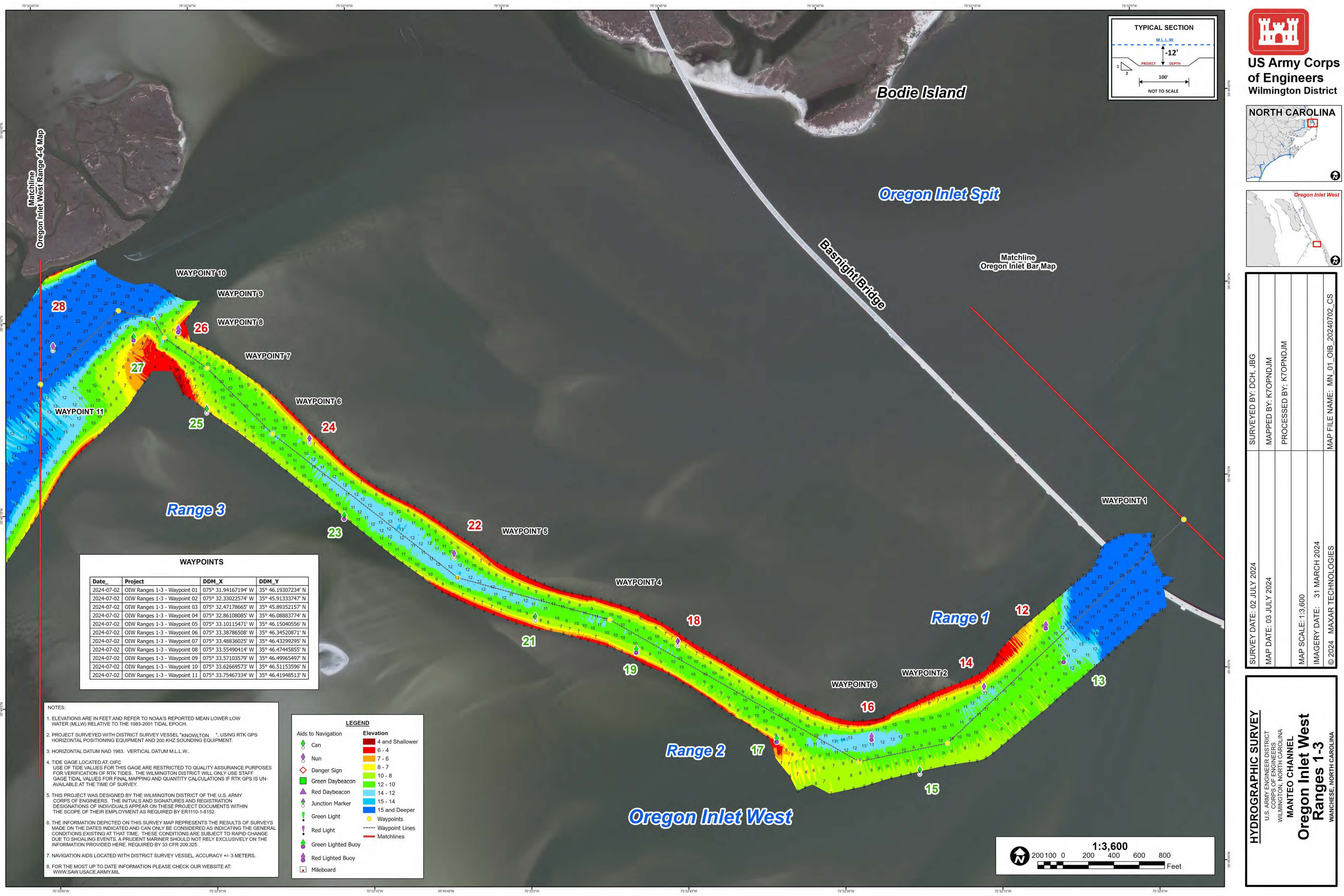
- ELEVATIONS ARE IN FEET AND REFER TO NOAA'S REPORTED MEAN LOWER LOW WATER (MLLW) RELATIVE TO THE 1983-2001 TIDAL EPOCH.
- PROJECT SURVEYED WITH DISTRICT SURVEY VESSEL "KNOWLTON". USING RTK GPS HORIZONTAL POSITIONING EQUIPMENT AND 200 KHZ SOUNDING EQUIPMENT.
- HORIZONTAL DATUM NAD 1983. VERTICAL DATUM M.L.L.W..
- TIDE GAGE LOCATED AT OIFC. USE OF TIDE VALUES FOR THIS GAGE ARE RESTRICTED TO QUALITY ASSURANCE PURPOSES FOR VERIFICATION OF RTK TIDES. THE WILMINGTON DISTRICT WILL ONLY USE STAFF GAGE TIDAL VALUES FOR FINAL MAPPING AND QUANTITY CALCULATIONS IF RTK GPS IS UNAVAILABLE AT THE TIME OF SURVEY.
- THIS PROJECT WAS DESIGNED BY THE WILMINGTON DISTRICT OF THE U.S. ARMY CORPS OF ENGINEERS. THE INITIALS AND SIGNATURES AND REGISTRATION DESIGNATIONS OF INDIVIDUALS APPEAR ON THESE PROJECT DOCUMENTS WITHIN THE SCOPE OF THEIR EMPLOYMENT AS REQUIRED BY ER1110-1-8152.
- THE INFORMATION DEPICTED ON THIS SURVEY MAP REPRESENTS THE RESULTS OF SURVEYS MADE ON THE DATES INDICATED AND CAN ONLY BE CONSIDERED AS INDICATING THE GENERAL CONDITIONS EXISTING AT THAT TIME. THESE CONDITIONS ARE SUBJECT TO RAPID CHANGE DUE TO SHOALING EVENTS. A PRUDENT MARINER SHOULD NOT RELY EXCLUSIVELY ON THE INFORMATION PROVIDED HERE. REQUIRED BY 33 CFR 209.325.
- NAVIGATION AIDS LOCATED WITH DISTRICT SURVEY VESSEL, ACCURACY +/- 3 METERS.
- FOR THE MOST UP TO DATE INFORMATION PLEASE CHECK OUR WEBSITE AT: WWW.SAW.USACE.ARMY.MIL

LEGEND

Aids to Navigation	Elevation
Can	4 and Shallower
Nun	6 - 4
Danger Sign	7 - 6
Green Daybeacon	8 - 7
Red Daybeacon	10 - 8
Junction Marker	12 - 10
Green Light	14 - 12
Red Light	15 - 14
Green Lighted Buoy	15 and Deeper
Red Lighted Buoy	Waypoints
Mileboard	Waypoint Lines
	Matchlines
	Navigation Channel



HYDROGRAPHIC SURVEY
U.S. ARMY ENGINEER DISTRICT
CORPS OF ENGINEERS
WILMINGTON, NORTH CAROLINA
MANTEO CHANNEL
Oregon Inlet West
Ranges 1-3
WANCHESE, NORTH CAROLINA



SURVEY DATE: 02 JULY 2024	SURVEYED BY: DCH, JBG
MAP DATE: 03 JULY 2024	MAPPED BY: K7OPNDJM
	PROCESSED BY: K7OPNDJM
MAP SCALE: 1:3,600	
IMAGERY DATE: 31 MARCH 2024	
© 2024 MAXAR TECHNOLOGIES	MAP FILE NAME: MN_01_OIB_20240702_CS

HYDROGRAPHIC SURVEY

U.S. ARMY ENGINEER DISTRICT
CORPS OF ENGINEERS
WILMINGTON, NORTH CAROLINA

MANTEO CHANNEL

Oregon Inlet West

Ranges 1-3

WANCHESE, NORTH CAROLINA

Date	Project	DDM_X	DDM_Y
2024-07-02	OIW Ranges 1-3 - Waypoint 01	075° 31.94167194' W	35° 46.19307234' N
2024-07-02	OIW Ranges 1-3 - Waypoint 02	075° 32.33022574' W	35° 45.91333747' N
2024-07-02	OIW Ranges 1-3 - Waypoint 03	075° 32.47178665' W	35° 45.89352157' N
2024-07-02	OIW Ranges 1-3 - Waypoint 04	075° 32.86108085' W	35° 46.08883774' N
2024-07-02	OIW Ranges 1-3 - Waypoint 05	075° 33.10115471' W	35° 46.15040556' N
2024-07-02	OIW Ranges 1-3 - Waypoint 06	075° 33.38786508' W	35° 46.34520871' N
2024-07-02	OIW Ranges 1-3 - Waypoint 07	075° 33.48836025' W	35° 46.43299295' N
2024-07-02	OIW Ranges 1-3 - Waypoint 08	075° 33.55490414' W	35° 46.47445855' N
2024-07-02	OIW Ranges 1-3 - Waypoint 09	075° 33.57103579' W	35° 46.49965497' N
2024-07-02	OIW Ranges 1-3 - Waypoint 10	075° 33.62669573' W	35° 46.51153596' N
2024-07-02	OIW Ranges 1-3 - Waypoint 11	075° 33.75467334' W	35° 46.41948513' N

- NOTES:
- ELEVATIONS ARE IN FEET AND REFER TO NOAA'S REPORTED MEAN LOWER LOW WATER (MLLW) RELATIVE TO THE 1983-2001 TIDAL EPOCH.
 - PROJECT SURVEYED WITH DISTRICT SURVEY VESSEL "KNOWLTON", USING RTK GPS HORIZONTAL POSITIONING EQUIPMENT AND 200 KHZ SOUNDING EQUIPMENT.
 - HORIZONTAL DATUM NAD 1983. VERTICAL DATUM M.L.L.W..
 - TIDE GAGE LOCATED AT: OFIC. USE OF TIDE VALUES FOR THIS GAGE ARE RESTRICTED TO QUALITY ASSURANCE PURPOSES FOR VERIFICATION OF RTK TIDES. THE WILMINGTON DISTRICT WILL ONLY USE STAFF GAGE TIDE VALUES FOR FINAL MAPPING AND QUANTITY CALCULATIONS IF RTK GPS IS UNAVAILABLE AT THE TIME OF SURVEY.
 - THIS PROJECT WAS DESIGNED BY THE WILMINGTON DISTRICT OF THE U.S. ARMY CORPS OF ENGINEERS. THE INITIALS AND SIGNATURES AND REGISTRATION DESIGNATIONS OF INDIVIDUALS APPEAR ON THESE PROJECT DOCUMENTS WITHIN THE SCOPE OF THEIR EMPLOYMENT AS REQUIRED BY ER1110-1-8.152.
 - THE INFORMATION DEPICTED ON THIS SURVEY MAP REPRESENTS THE RESULTS OF SURVEYS MADE ON THE DATES INDICATED AND CAN ONLY BE CONSIDERED AS INDICATING THE GENERAL CONDITIONS EXISTING AT THAT TIME. THESE CONDITIONS ARE SUBJECT TO RAPID CHANGE DUE TO SHOALING EVENTS. A PRUDENT MARINER SHOULD NOT RELY EXCLUSIVELY ON THE INFORMATION PROVIDED HERE. REQUIRED BY 33 CFR 209.325.
 - NAVIGATION AIDS LOCATED WITH DISTRICT SURVEY VESSEL, ACCURACY +/- 3 METERS.
 - FOR THE MOST UP TO DATE INFORMATION PLEASE CHECK OUR WEBSITE AT: WWW.SAW.USACE.ARMY.MIL

LEGEND

Aids to Navigation

Can

Nun

Danger Sign

Green Daybeacon

Red Daybeacon

Junction Marker

Green Light

Red Light

Green Lighted Buoy

Red Lighted Buoy

Mileboard

Elevation

4 and Shallower

6 - 4

7 - 6

8 - 7

10 - 8

12 - 10

14 - 12

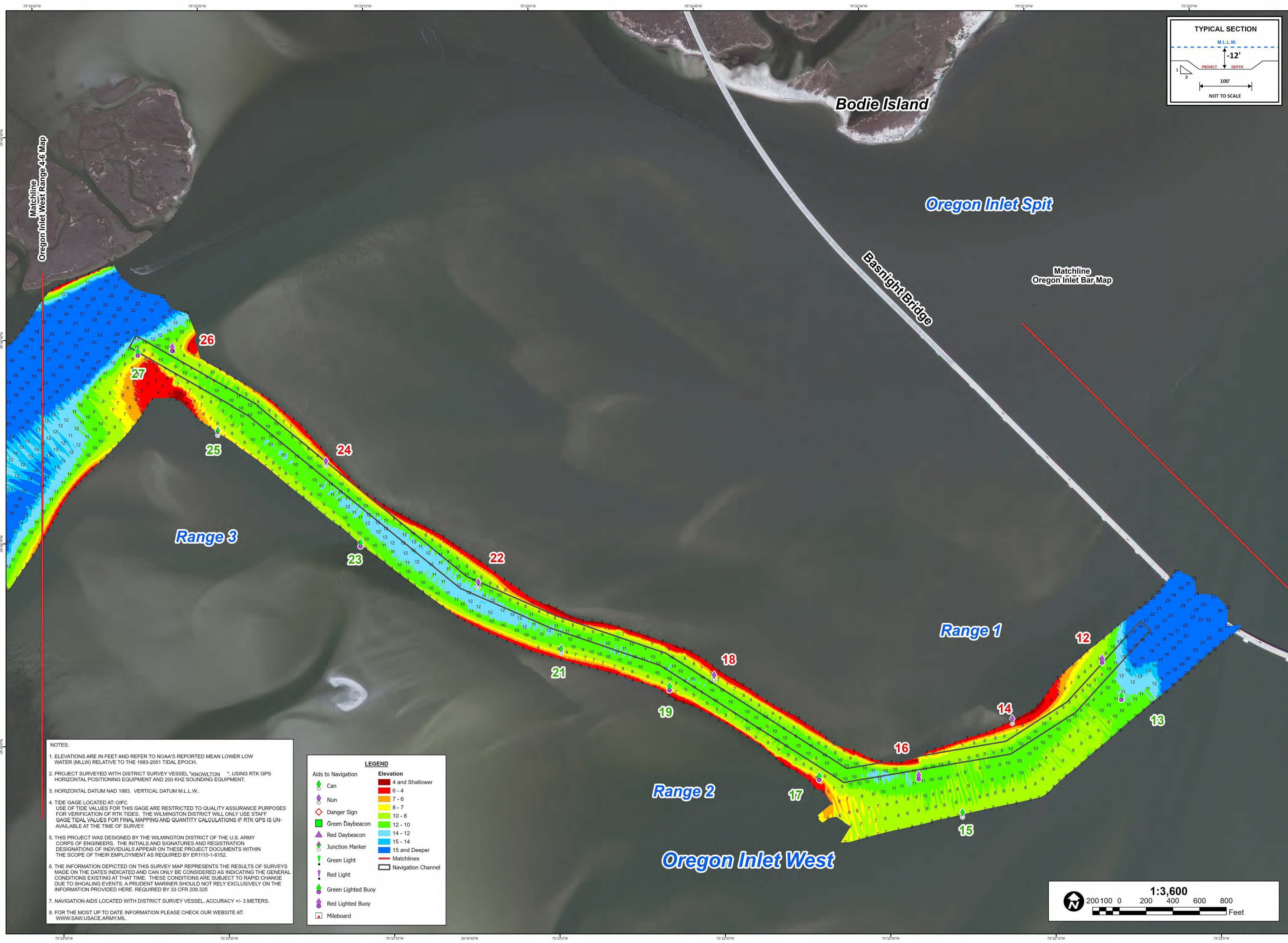
15 - 14

15 and Deeper

Waypoints

Waypoint Lines

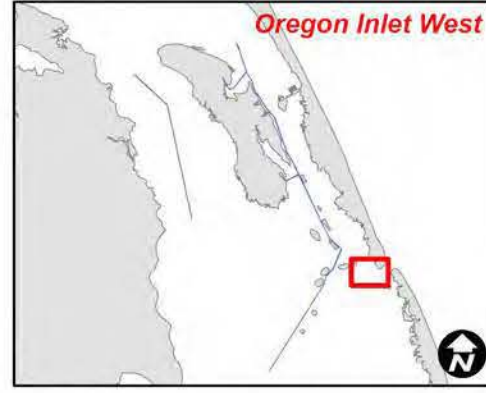
Matchlines





**US Army Corps
of Engineers**
Wilmington District

NORTH CAROLINA



SURVEYED BY: DCH, JBG	SURVEY DATE: 29 MAY 2024
MAPPED BY: K7OPNDJM	MAP DATE: 30 MAY 2024
PROCESSED BY: K7OPNDJM	
	MAP SCALE: 1:3,600
	IMAGERY DATE: 31 MARCH 2024
MAP FILE NAME: MN_01_OIB_20240629_CS	© 2024 MAXAR TECHNOLOGIES

HYDROGRAPHIC SURVEY

U.S. ARMY ENGINEER DISTRICT
CORPS OF ENGINEERS
WILMINGTON, NORTH CAROLINA

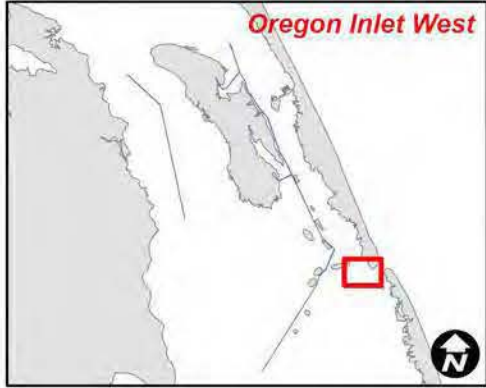
MANTEO CHANNEL
Oregon Inlet West
Ranges 1-3
WACHUSE, NORTH CAROLINA





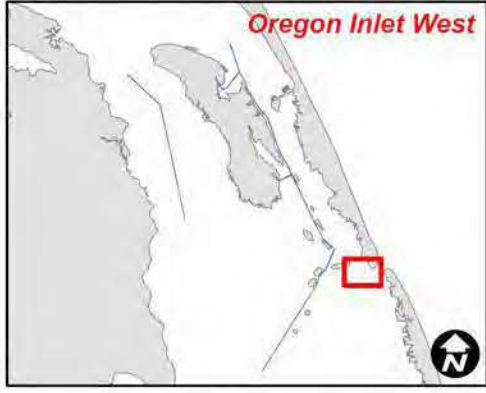
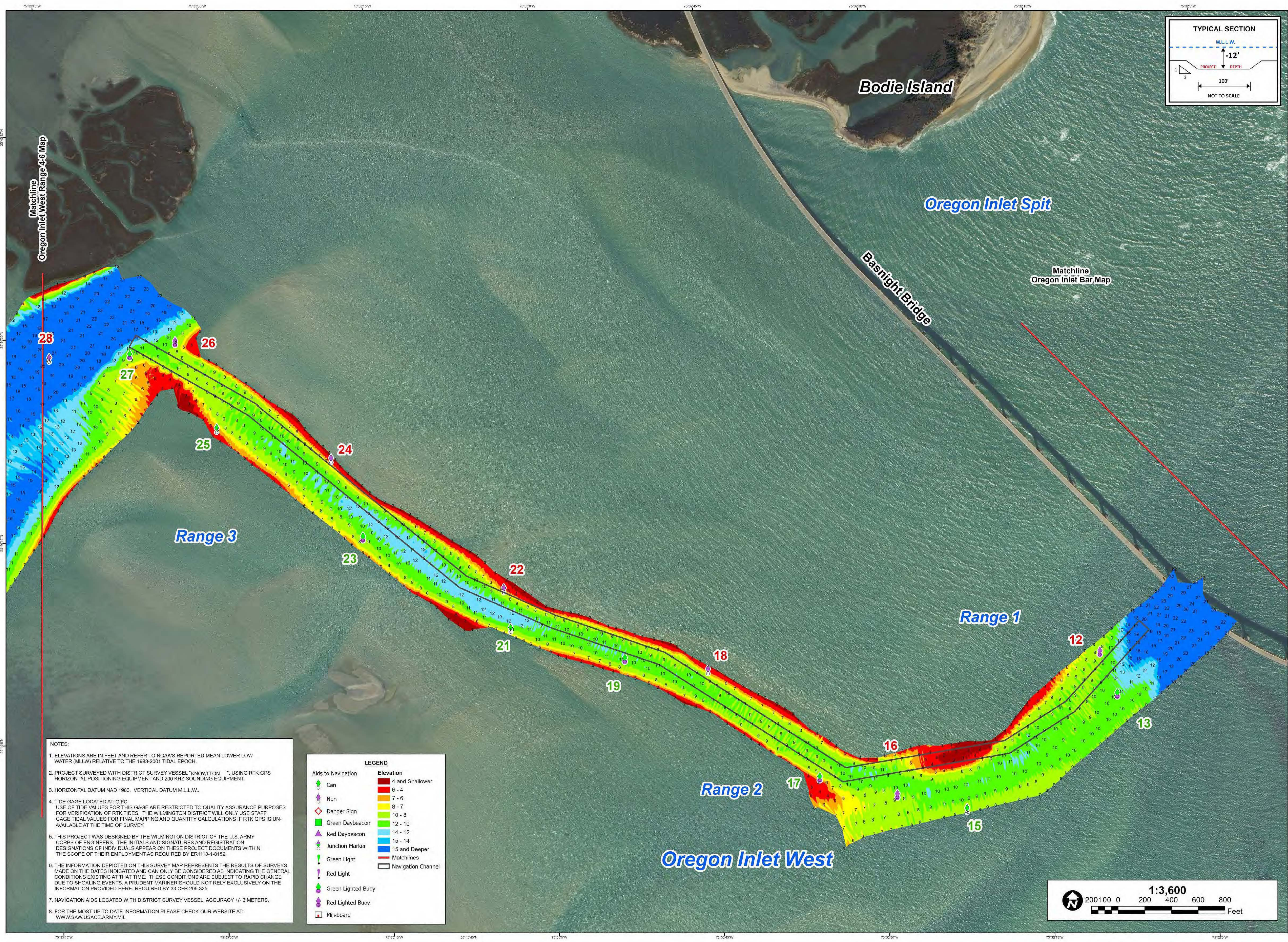
**US Army Corps
of Engineers**
Wilmington District

NORTH CAROLINA



SURVEYED BY: DCH, JBG	
MAPPED BY: K7OPNDJM	
PROCESSED BY: K7OPNDJM	
MAP SCALE: 1:3,600	
IMAGERY DATE: 31 MARCH 2024	
© 2024 MAXAR TECHNOLOGIES	
MAP FILE NAME: MN_01_OIB_20240418_CS	

HYDROGRAPHIC SURVEY
U.S. ARMY ENGINEER DISTRICT
CORPS OF ENGINEERS
WILMINGTON, NORTH CAROLINA
MANTEO CHANNEL
Oregon Inlet West
Ranges 1-3
WACHUSE, NORTH CAROLINA



SURVEYED BY: DCC, JBG	SURVEY DATE: 15 MARCH 2024
MAPPED BY: K7OPNDJM	MAP DATE: 19 MARCH 2024
PROCESSED BY: K7OPNDJM	
	MAP SCALE: 1:3,600
	IMAGERY DATE: 07 DECEMBER 2023
MAP FILE NAME: MN_01_OIB_20240315_CS	© 2023 MAXAR TECHNOLOGIES

HYDROGRAPHIC SURVEY

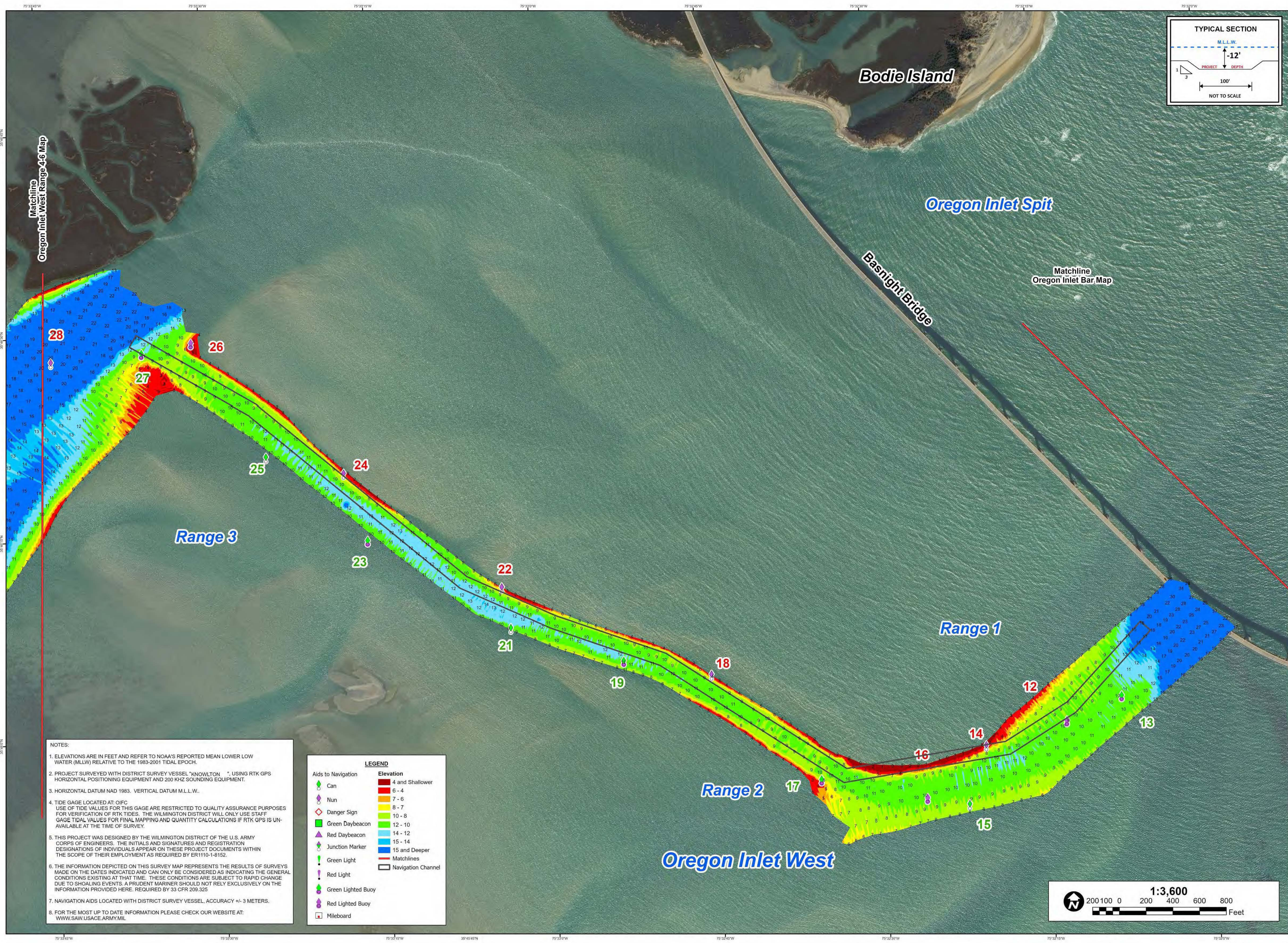
U.S. ARMY ENGINEER DISTRICT
CORPS OF ENGINEERS
WILMINGTON, NORTH CAROLINA

MANTEO CHANNEL

Oregon Inlet West

Ranges 1-3

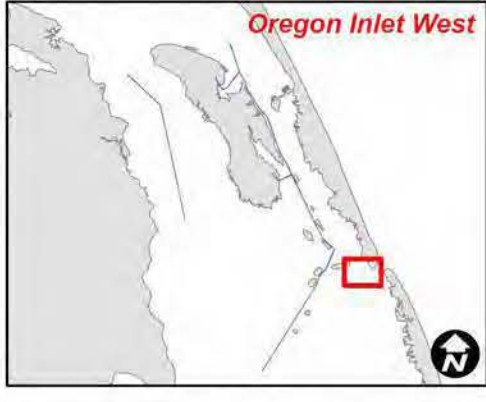
WACHUSE, NORTH CAROLINA





**US Army Corps
of Engineers**
Wilmington District

NORTH CAROLINA



SURVEYED BY: DCH, JBG	
MAPPED BY: K7OPNDJM	
PROCESSED BY: K7OPNDJM	
MAP SCALE: 1:3,600	
IMAGERY DATE: 07 DECEMBER 2023	
© 2023 MAXAR TECHNOLOGIES	
MAP FILE NAME: MN_01_OIB_20240111_CS	

HYDROGRAPHIC SURVEY
U.S. ARMY ENGINEER DISTRICT
CORPS OF ENGINEERS
WILMINGTON, NORTH CAROLINA
MANTEO CHANNEL
Oregon Inlet West
Ranges 1-3
WACHUSE, NORTH CAROLINA