

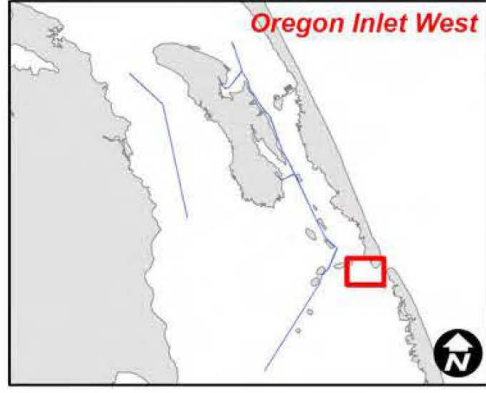
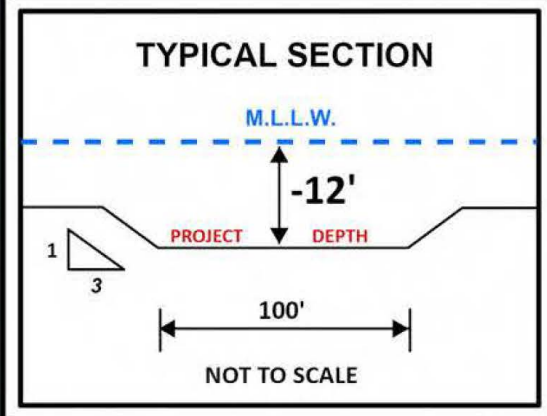
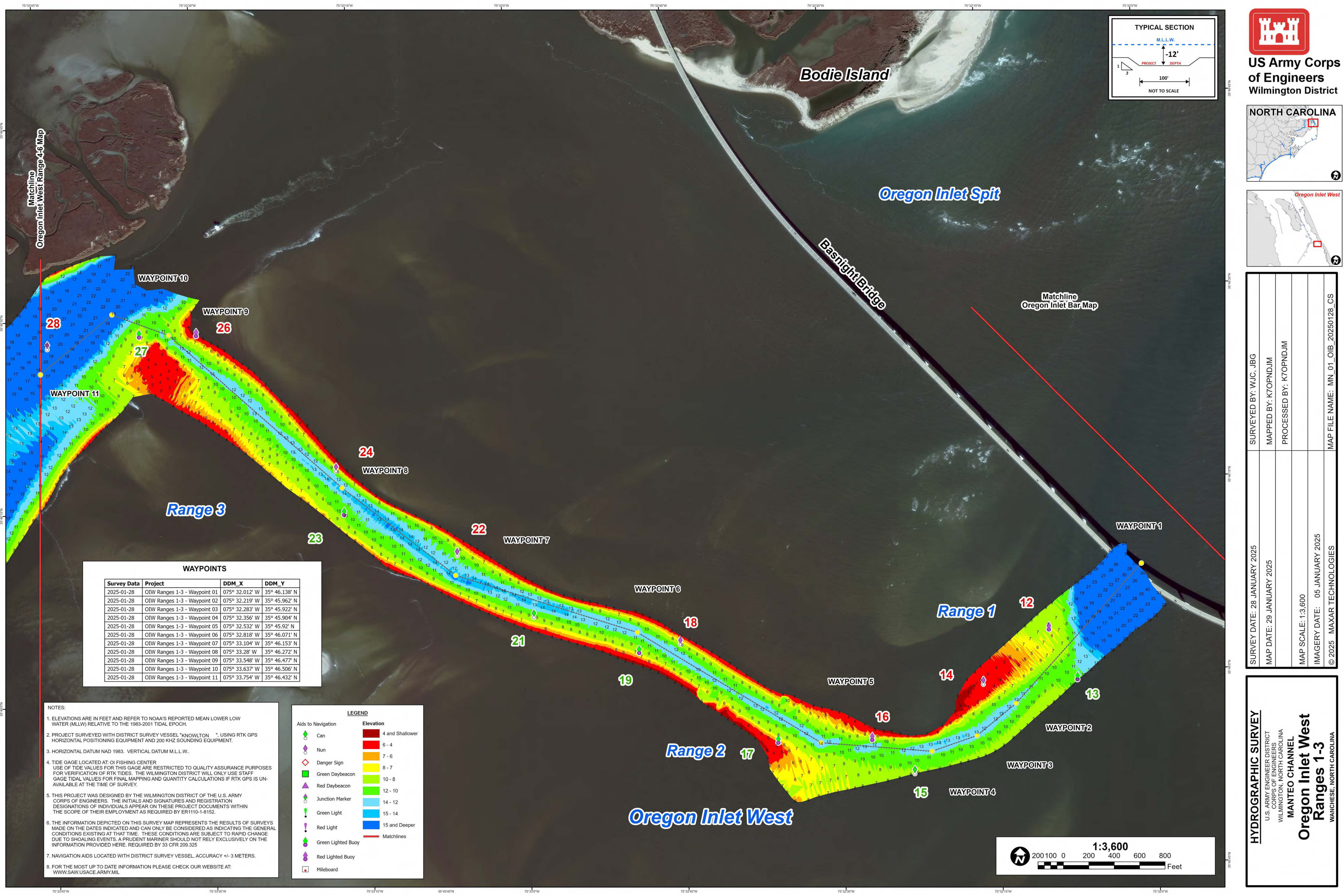
SURVEY DATE: 22 APRIL 2025	SURVEYED BY: DCH, JBG
MAP DATE: 23 APRIL 2025	MAPPED BY: K7OPNKM5
	PROCESSED BY: K7OPNKM5
MAP SCALE: 1:3,600	
IMAGERY DATE: 17 APRIL 2025	
© 2025 MAXAR TECHNOLOGIES	MAP FILE NAME: MN_01_OIB_20250422_CS

WAYPOINTS			
Project	Survey Date	DDM_X	DDM_Y
OIW Ranges 1-3 - Waypoint 01	2025-04-22	075° 31.974' W	35° 46.103' N
OIW Ranges 1-3 - Waypoint 02	2025-04-22	075° 32.171' W	35° 45.98' N
OIW Ranges 1-3 - Waypoint 03	2025-04-22	075° 32.235' W	35° 45.93' N
OIW Ranges 1-3 - Waypoint 04	2025-04-22	075° 32.337' W	35° 45.905' N
OIW Ranges 1-3 - Waypoint 05	2025-04-22	075° 32.531' W	35° 45.917' N
OIW Ranges 1-3 - Waypoint 06	2025-04-22	075° 32.81' W	35° 46.069' N
OIW Ranges 1-3 - Waypoint 07	2025-04-22	075° 33.105' W	35° 46.151' N
OIW Ranges 1-3 - Waypoint 08	2025-04-22	075° 33.283' W	35° 46.271' N
OIW Ranges 1-3 - Waypoint 09	2025-04-22	075° 33.355' W	35° 46.324' N
OIW Ranges 1-3 - Waypoint 10	2025-04-22	075° 33.446' W	35° 46.406' N
OIW Ranges 1-3 - Waypoint 11	2025-04-22	075° 33.618' W	35° 46.52' N
OIW Ranges 1-3 - Waypoint 12	2025-04-22	075° 33.754' W	35° 46.432' N

- NOTES:
- ELEVATIONS ARE IN FEET AND REFER TO NOAA'S REPORTED MEAN LOWER LOW WATER (MLLW) RELATIVE TO THE 1983-2001 TIDAL EPOCH.
 - PROJECT SURVEYED WITH DISTRICT SURVEY VESSEL "KNOWLTON", USING RTK GPS HORIZONTAL POSITIONING EQUIPMENT AND 200 KHZ SOUNDING EQUIPMENT.
 - HORIZONTAL DATUM NAD 1983. VERTICAL DATUM M.L.L.W..
 - TIDE GAGE LOCATED AT: OREGON INLET FISHING CENTER. USE OF TIDE VALUES FOR THIS GAGE ARE RESTRICTED TO QUALITY ASSURANCE PURPOSES FOR VERIFICATION OF RTK TIDES. THE WILMINGTON DISTRICT WILL ONLY USE STAFF GAGE TIDAL VALUES FOR FINAL MAPPING AND QUANTITY CALCULATIONS IF RTK GPS IS UNAVAILABLE AT THE TIME OF SURVEY.
 - THIS PROJECT WAS DESIGNED BY THE WILMINGTON DISTRICT OF THE U.S. ARMY CORPS OF ENGINEERS. THE INITIALS AND SIGNATURES AND REGISTRATION DESIGNATIONS OF INDIVIDUALS APPEAR ON THESE PROJECT DOCUMENTS WITHIN THE SCOPE OF THEIR EMPLOYMENT AS REQUIRED BY ER1110-1-8152.
 - THE INFORMATION DEPICTED ON THIS SURVEY MAP REPRESENTS THE RESULTS OF SURVEYS MADE ON THE DATES INDICATED AND CAN ONLY BE CONSIDERED AS INDICATING THE GENERAL CONDITIONS EXISTING AT THAT TIME. THESE CONDITIONS ARE SUBJECT TO RAPID CHANGE DUE TO SHOALING EVENTS. A PRUDENT MARINER SHOULD NOT RELY EXCLUSIVELY ON THE INFORMATION PROVIDED HERE. REQUIRED BY 33 CFR 209.325
 - NAVIGATION AIDS LOCATED WITH DISTRICT SURVEY VESSEL, ACCURACY +/- 3 METERS.
 - FOR THE MOST UP TO DATE INFORMATION PLEASE CHECK OUR WEBSITE AT: WWW.SAW.USACE.ARMY.MIL

LEGEND

Aids to Navigation	Elevation
Can	4 and Shallower
Nun	6 - 4
Danger Sign	7 - 6
Green Daybeacon	8 - 7
Red Daybeacon	10 - 8
Junction Marker	12 - 10
Green Light	14 - 12
Red Light	15 - 14
Green Lighted Buoy	Waypoints
Red Lighted Buoy	Waypoint Lines
Mileboard	Matchlines



SURVEY DATE: 28 JANUARY 2025	SURVEYED BY: WJC, JBG
MAP DATE: 29 JANUARY 2025	MAPPED BY: K7OPNDJM
	PROCESSED BY: K7OPNDJM
MAP SCALE: 1:3,600	
IMAGERY DATE: 05 JANUARY 2025	
© 2025 MAXAR TECHNOLOGIES	MAP FILE NAME: MN_01_OIB_20250128_CS

HYDROGRAPHIC SURVEY

U.S. ARMY ENGINEER DISTRICT
CORPS OF ENGINEERS
WILMINGTON, NORTH CAROLINA
MANTEO CHANNEL

Oregon Inlet West
Ranges 1-3
WACHUSE, NORTH CAROLINA

WAYPOINTS			
Survey Data	Project	DDM_X	DDM_Y
2025-01-28	OIW Ranges 1-3 - Waypoint 01	075° 32.012' W	35° 46.138' N
2025-01-28	OIW Ranges 1-3 - Waypoint 02	075° 32.219' W	35° 45.962' N
2025-01-28	OIW Ranges 1-3 - Waypoint 03	075° 32.283' W	35° 45.922' N
2025-01-28	OIW Ranges 1-3 - Waypoint 04	075° 32.356' W	35° 45.904' N
2025-01-28	OIW Ranges 1-3 - Waypoint 05	075° 32.532' W	35° 45.92' N
2025-01-28	OIW Ranges 1-3 - Waypoint 06	075° 32.818' W	35° 46.071' N
2025-01-28	OIW Ranges 1-3 - Waypoint 07	075° 33.104' W	35° 46.153' N
2025-01-28	OIW Ranges 1-3 - Waypoint 08	075° 33.28' W	35° 46.272' N
2025-01-28	OIW Ranges 1-3 - Waypoint 09	075° 33.548' W	35° 46.477' N
2025-01-28	OIW Ranges 1-3 - Waypoint 10	075° 33.637' W	35° 46.506' N
2025-01-28	OIW Ranges 1-3 - Waypoint 11	075° 33.754' W	35° 46.432' N

NOTES:

1. ELEVATIONS ARE IN FEET AND REFER TO NOAA'S REPORTED MEAN LOWER LOW WATER (MLLW) RELATIVE TO THE 1983-2001 TIDAL EPOCH.

2. PROJECT SURVEYED WITH DISTRICT SURVEY VESSEL "KNOWLTON", USING RTK GPS HORIZONTAL POSITIONING EQUIPMENT AND 200 KHZ SOUNDING EQUIPMENT.

3. HORIZONTAL DATUM NAD 1983. VERTICAL DATUM M.L.L.W..

4. TIDE GAGE LOCATED AT: OI FISHING CENTER. USE OF TIDE VALUES FOR THIS GAGE ARE RESTRICTED TO QUALITY ASSURANCE PURPOSES FOR VERIFICATION OF RTK TIDES. THE WILMINGTON DISTRICT WILL ONLY USE STAFF GAGE TIDAL VALUES FOR FINAL MAPPING AND QUANTITY CALCULATIONS IF RTK GPS IS UNAVAILABLE AT THE TIME OF SURVEY.

5. THIS PROJECT WAS DESIGNED BY THE WILMINGTON DISTRICT OF THE U.S. ARMY CORPS OF ENGINEERS. THE INITIALS AND SIGNATURES AND REGISTRATION DESIGNATIONS OF INDIVIDUALS APPEAR ON THESE PROJECT DOCUMENTS WITHIN THE SCOPE OF THEIR EMPLOYMENT AS REQUIRED BY ER1110-1-8152.

6. THE INFORMATION DEPICTED ON THIS SURVEY MAP REPRESENTS THE RESULTS OF SURVEYS MADE ON THE DATES INDICATED AND CAN ONLY BE CONSIDERED AS INDICATING THE GENERAL CONDITIONS EXISTING AT THAT TIME. THESE CONDITIONS ARE SUBJECT TO RAPID CHANGE DUE TO SHOALING EVENTS. A PRUDENT MARINER SHOULD NOT RELY EXCLUSIVELY ON THE INFORMATION PROVIDED HERE. REQUIRED BY 33 CFR 209.325

7. NAVIGATION AIDS LOCATED WITH DISTRICT SURVEY VESSEL, ACCURACY +/- 3 METERS.

8. FOR THE MOST UP TO DATE INFORMATION PLEASE CHECK OUR WEBSITE AT: WWW.SAW.USACE.ARMY.MIL

LEGEND

Aids to Navigation

Can

Nun

Danger Sign

Green Daybeacon

Red Daybeacon

Junction Marker

Green Light

Red Light

Green Lighted Buoy

Red Lighted Buoy

Mileboard

Elevation

4 and Shallower

6 - 4

7 - 6

8 - 7

10 - 8

12 - 10

14 - 12

15 - 14

15 and Deeper

Matchlines