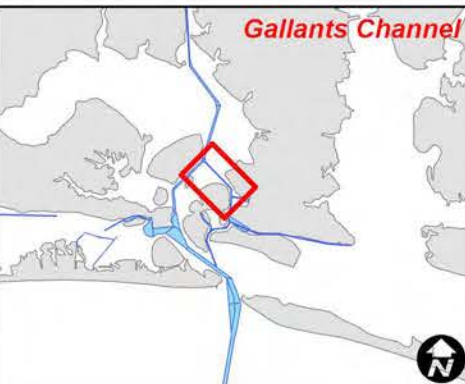


US Army Corps
of Engineers
Wilmington District



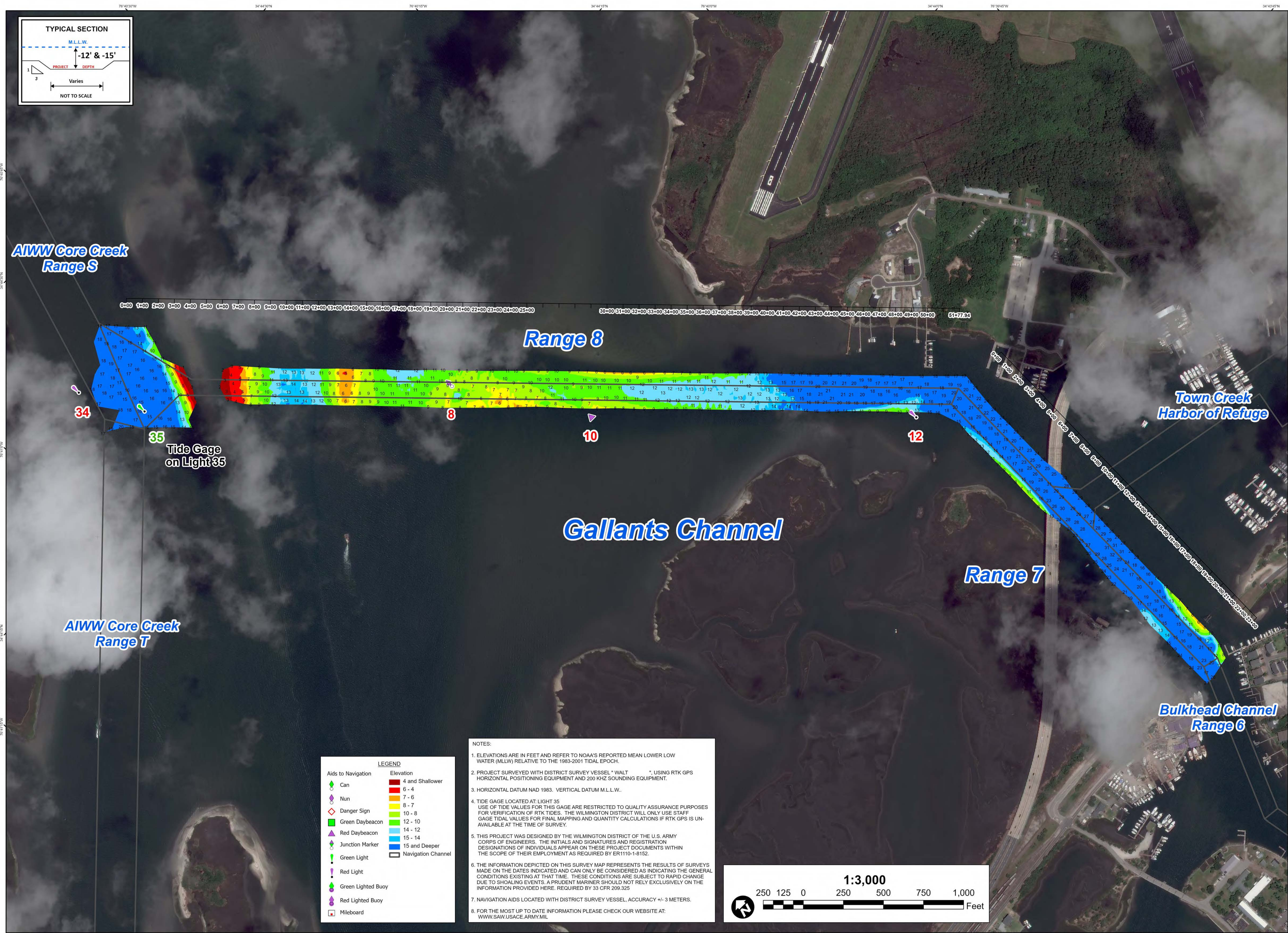
SURVEY DATE: 15 AUGUST 2024	SURVEYED BY: JCC,JBG
MAP DATE: 20 AUGUST 2024	MAPPED BY: K7OPNKM5
	PROCESSED BY: K7OPNKM5
MAP SCALE: 1:3,000	
IMAGERY DATE: 05 JUNE 2024	
© 2024 MAXAR TECHNOLOGIES	MAP FILE NAME: BH_02_GAL_20240815_CS

HYDROGRAPHIC SURVEY

U.S. ARMY ENGINEER DISTRICT
CORPS OF ENGINEERS
WILMINGTON, NORTH CAROLINA

Gallants Channel

BEAUFORT, NORTH CAROLINA



LEGEND	
Aids to Navigation	Elevation
Can	4 and Shallower
Nun	6 - 4
Danger Sign	7 - 6
Green Daybeacon	8 - 7
Red Daybeacon	10 - 8
Junction Marker	12 - 10
Green Light	14 - 12
Red Light	15 - 14
Green Lighted Buoy	15 and Deeper
Red Lighted Buoy	Navigation Channel
Mileboard	

- NOTES:
- ELEVATIONS ARE IN FEET AND REFER TO NOAA'S REPORTED MEAN LOWER LOW WATER (MLLW) RELATIVE TO THE 1983-2001 TIDAL EPOCH.
 - PROJECT SURVEYED WITH DISTRICT SURVEY VESSEL "WALT" HORIZONTAL POSITIONING EQUIPMENT AND 200 KHZ SOUNDING EQUIPMENT. * USING RTK GPS
 - HORIZONTAL DATUM NAD 1983. VERTICAL DATUM M.L.L.W..
 - TIDE GAGE LOCATED AT LIGHT 35. USE OF TIDE VALUES FOR THIS GAGE ARE RESTRICTED TO QUALITY ASSURANCE PURPOSES FOR VERIFICATION OF RTK TIDES. THE WILMINGTON DISTRICT WILL ONLY USE STAFF GAGE TIDE VALUES FOR FINAL MAPPING AND QUANTITY CALCULATIONS IF RTK GPS IS UNAVAILABLE AT THE TIME OF SURVEY.
 - THIS PROJECT WAS DESIGNED BY THE WILMINGTON DISTRICT OF THE U.S. ARMY CORPS OF ENGINEERS. THE INITIALS AND SIGNATURES AND REGISTRATION DESIGNATIONS OF INDIVIDUALS APPEAR ON THESE PROJECT DOCUMENTS WITHIN THE SCOPE OF THEIR EMPLOYMENT AS REQUIRED BY ER1110-1-6152.
 - THE INFORMATION DEPICTED ON THIS SURVEY MAP REPRESENTS THE RESULTS OF SURVEYS MADE ON THE DATES INDICATED AND CAN ONLY BE CONSIDERED AS INDICATING THE GENERAL CONDITIONS EXISTING AT THAT TIME. THESE CONDITIONS ARE SUBJECT TO RAPID CHANGE DUE TO SHOALING EVENTS. A PRUDENT MARINER SHOULD NOT RELY EXCLUSIVELY ON THE INFORMATION PROVIDED HERE. REQUIRED BY 33 CFR 209.325
 - NAVIGATION AIDS LOCATED WITH DISTRICT SURVEY VESSEL, ACCURACY +/- 3 METERS.
 - FOR THE MOST UP TO DATE INFORMATION PLEASE CHECK OUR WEBSITE AT: WWW.SAW.USACE.ARMY.MIL

