

Shackleford
Banks

Cutoff - Range A



US Army Corps
of Engineers
Wilmington District

Depth In Feet

20 and Shallower

20 - 25

25 - 32

32 - 35

35 - 38

38 - 42

42 - 44

44 - 45

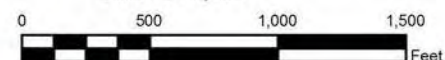
45 - 47

47 and Deeper

Imagery Date: © March 14, 2016 DigitalGlobe NextView License

Map Name: 2016_MHC_Sequence.mxd

Scale 1 : 9,000

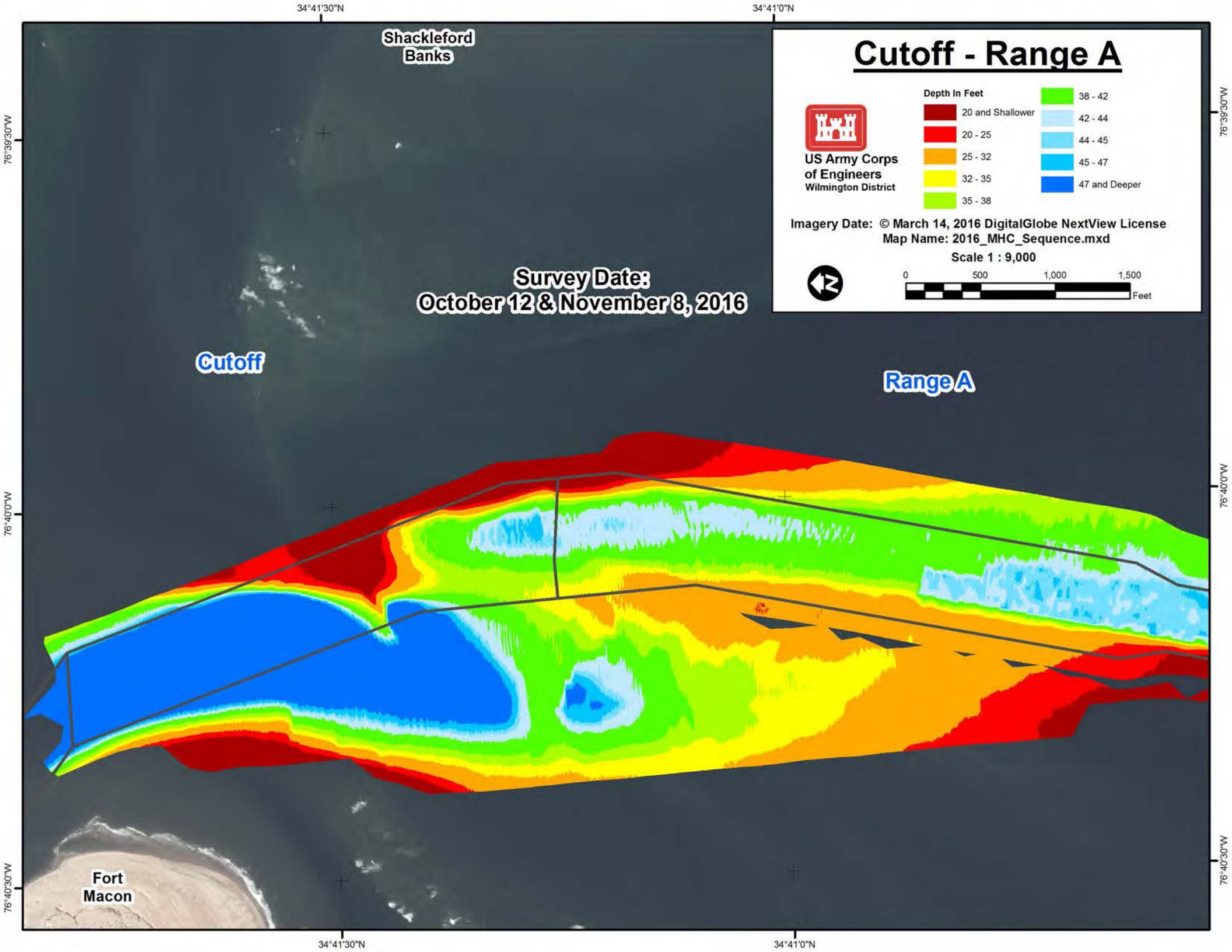


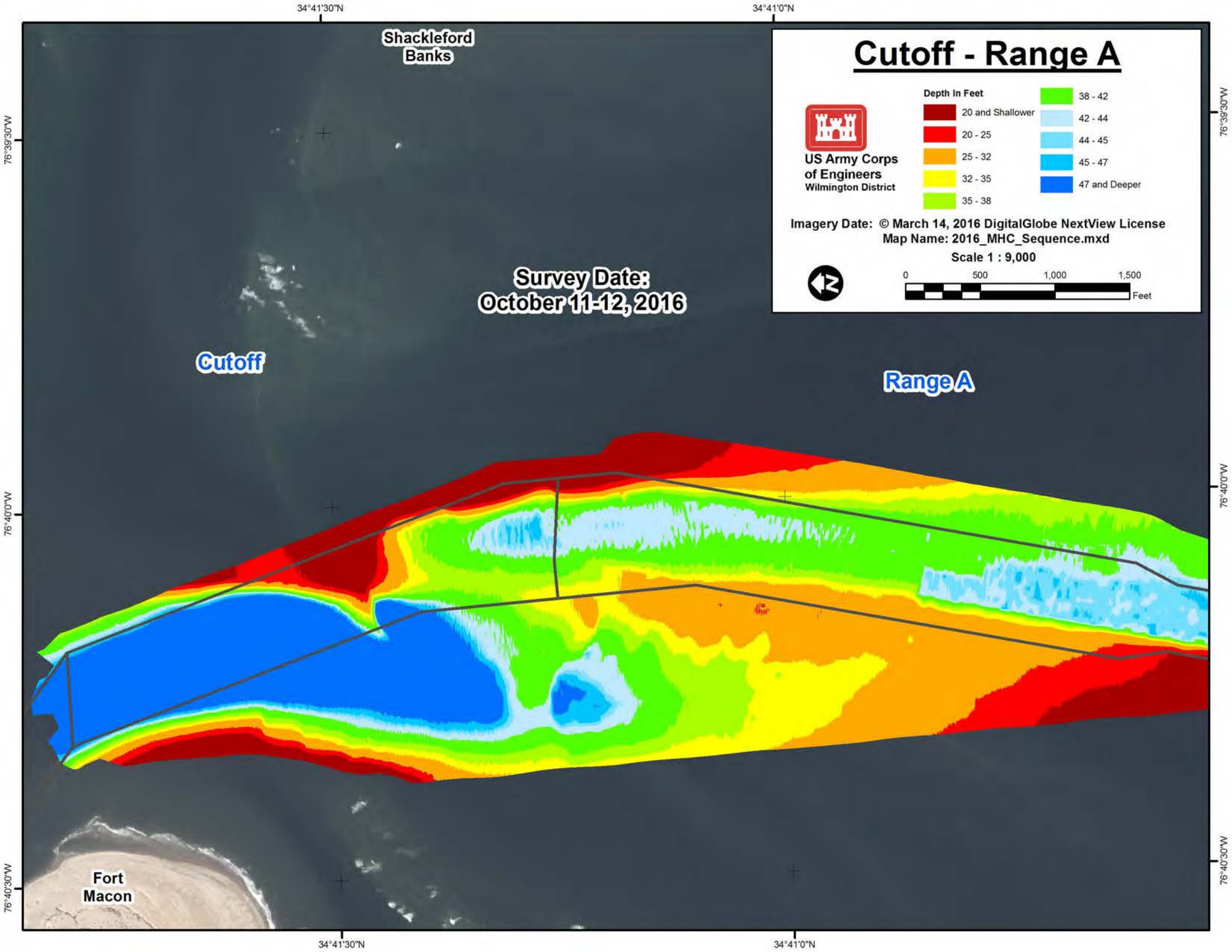
Survey Date:
December 8-9 & October 12, 2016

Cutoff

Range A

Fort
Macon





Shackleford
Banks

Cutoff - Range A



US Army Corps
of Engineers
Wilmington District

Depth In Feet

20 and Shallower

20 - 25

25 - 32

32 - 35

35 - 38

38 - 42

42 - 44

44 - 45

45 - 47

47 and Deeper

Imagery Date: © March 14, 2016 DigitalGlobe NextView License

Map Name: 2016_MHC_Sequence.mxd

Scale 1 : 9,000

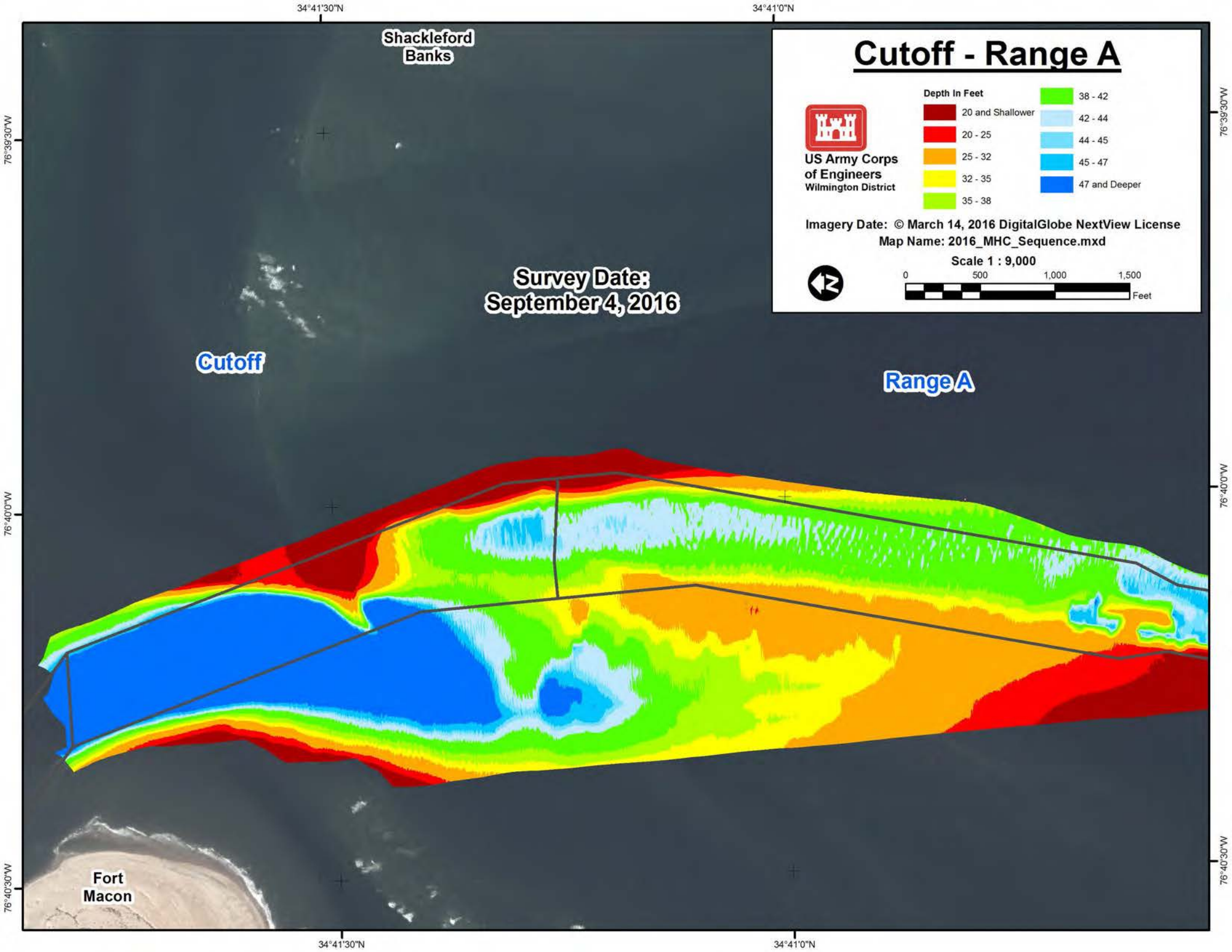


Survey Date:
October 3-4, 2016

Cutoff

Range A

Fort
Macon



Shackleford
Banks

Cutoff - Range A



US Army Corps
of Engineers
Wilmington District

Depth In Feet

20 and Shallower

20 - 25

25 - 32

32 - 35

35 - 38

38 - 42

42 - 44

44 - 45

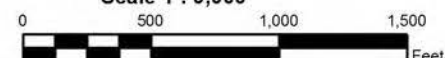
45 - 47

47 and Deeper

Imagery Date: © March 14, 2016 DigitalGlobe NextView License

Map Name: 2016_MHC_Sequence.mxd

Scale 1 : 9,000

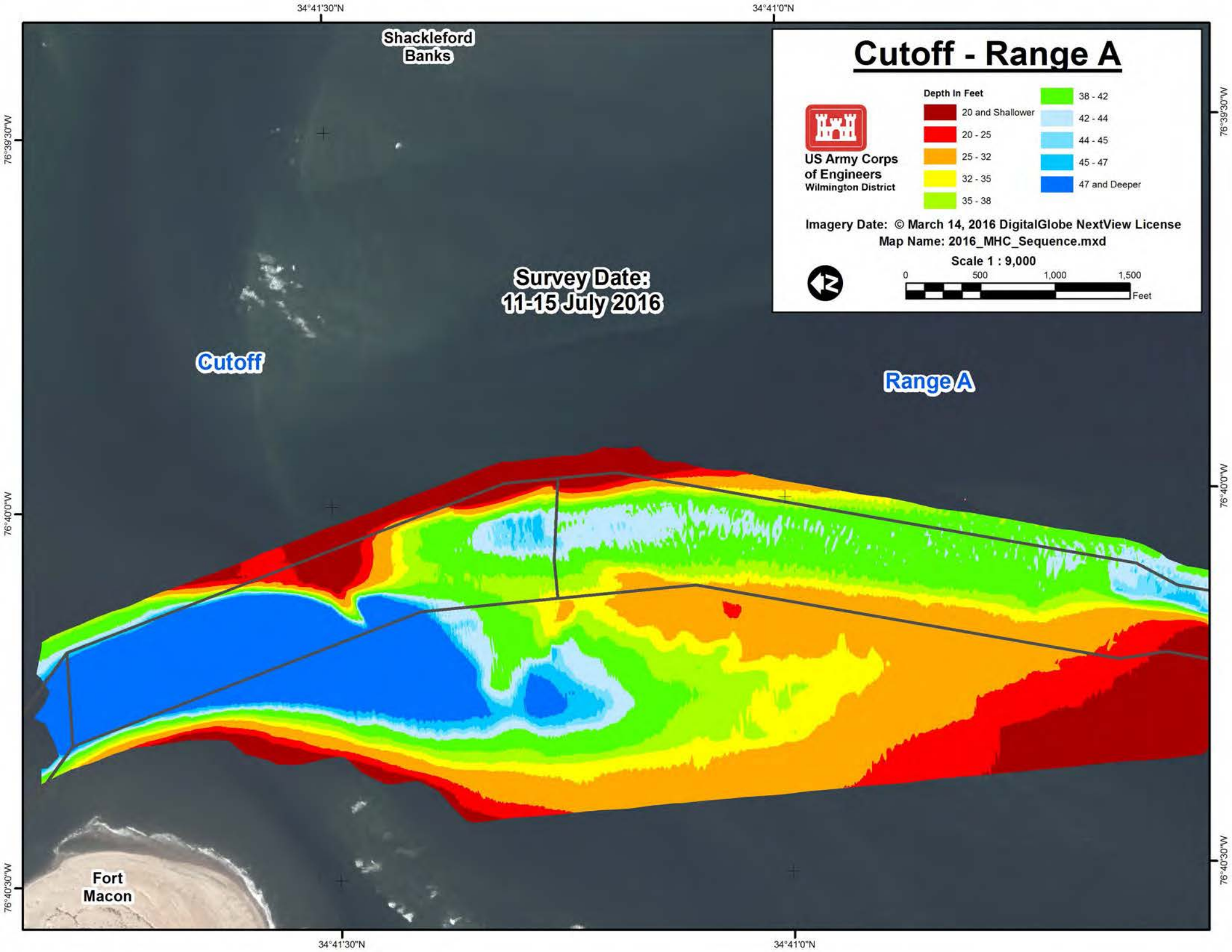


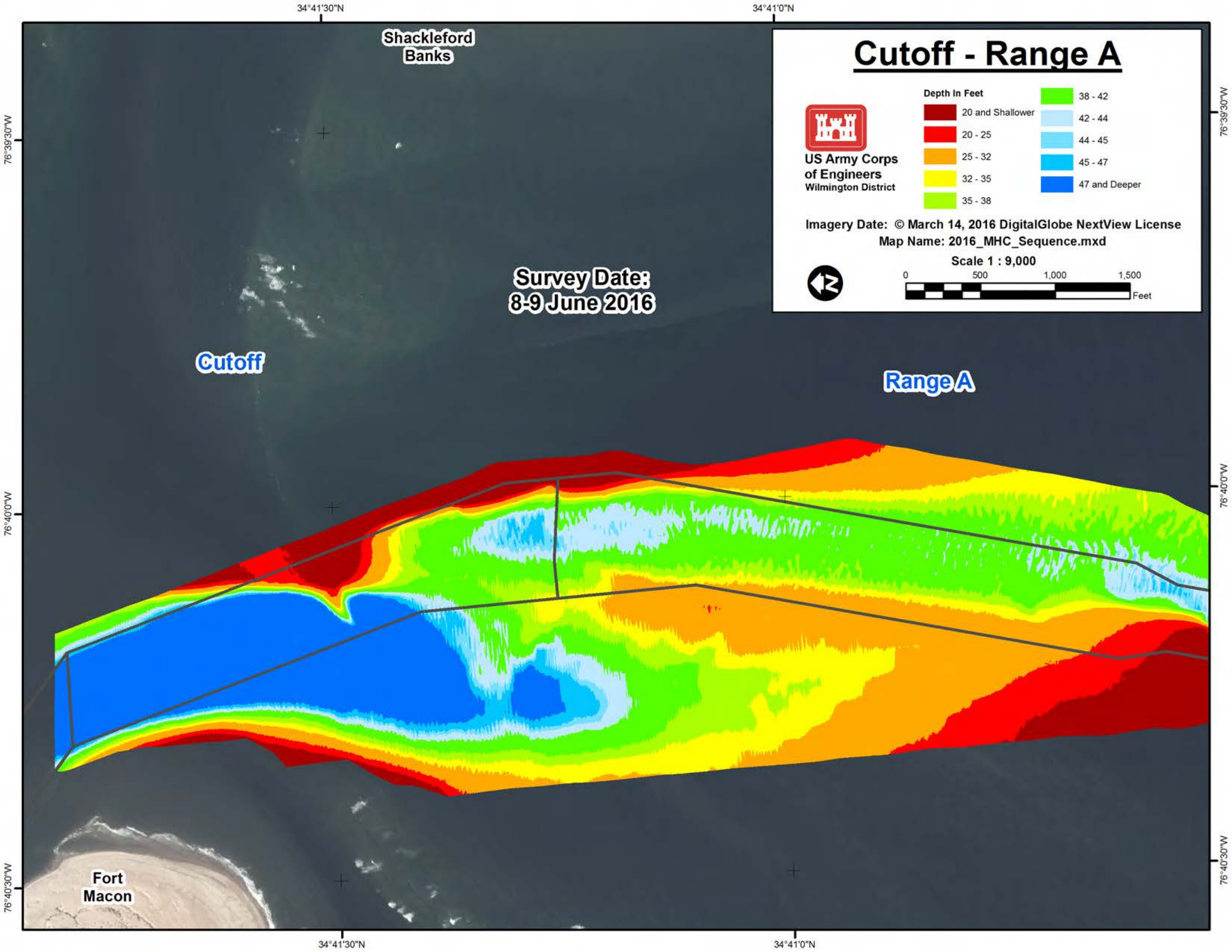
Survey Date:
17-19 & 23-25 August 2016

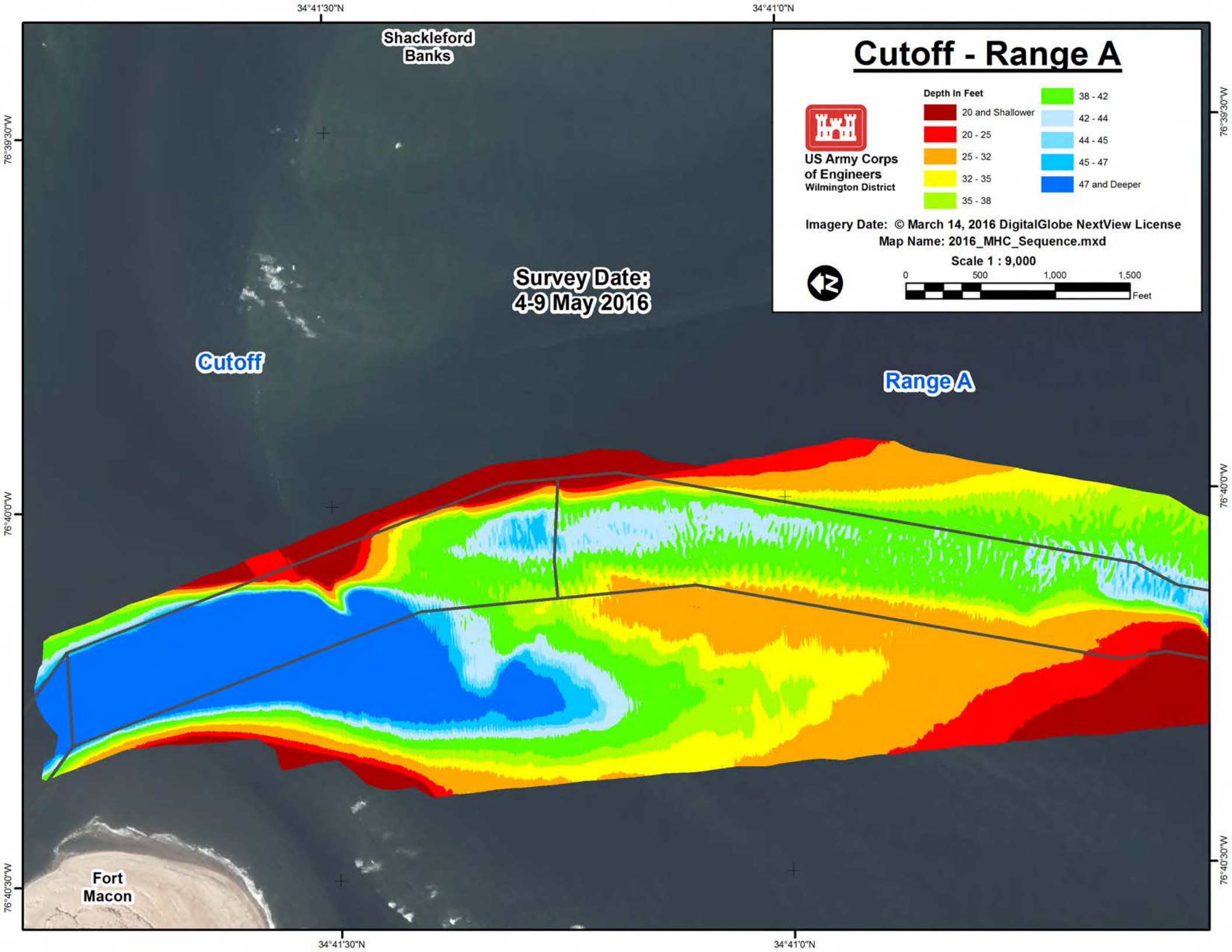
Cutoff

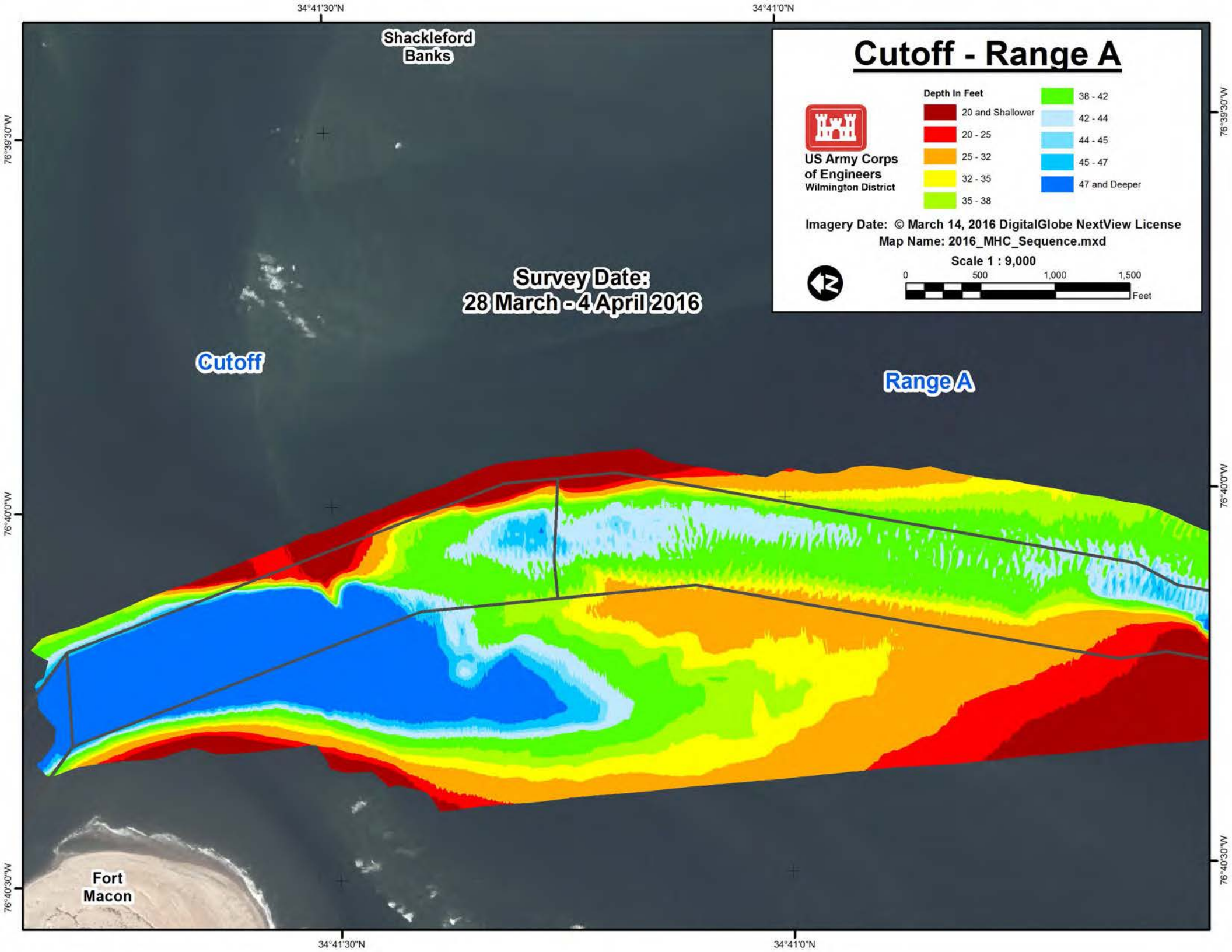
Range A

Fort
Macon









Shackleford
Banks

Cutoff - Range A



US Army Corps
of Engineers
Wilmington District

Depth In Feet

20 and Shallower

20 - 25

25 - 32

32 - 35

35 - 38

38 - 42

42 - 44

44 - 45

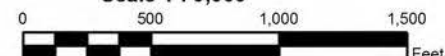
45 - 47

47 and Deeper

Imagery Date: © March 14, 2016 DigitalGlobe NextView License

Map Name: 2016_MHC_Sequence.mxd

Scale 1 : 9,000



Survey Date:
23 February - 1 March 2016

Cutoff

Range A

Fort
Macon

Shackleford
Banks

Cutoff - Range A



US Army Corps
of Engineers
Wilmington District

Depth In Feet

20 and Shallower

20 - 25

25 - 32

32 - 35

35 - 38

38 - 42

42 - 44

44 - 45

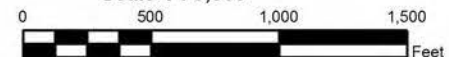
45 - 47

47 and Deeper

Imagery Date: © March 14, 2016 DigitalGlobe NextView License

Map Name: 2016_MHC_Sequence.mxd

Scale 1 : 9,000



Survey Date:
12-13 & 19-20 January 2016

Cutoff

Range A

Fort
Macon