

34°41'30"N

34°41'0"N

Shackleford Banks

Cutoff - Range A



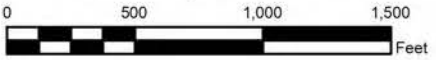
US Army Corps of Engineers
Wilmington District

Depth In Feet

Dark Red	20 and Shallower	Light Blue	38 - 42
Red	20 - 25	Medium Light Blue	42 - 44
Orange	25 - 32	Light Blue	44 - 45
Yellow	32 - 35	Medium Blue	45 - 47
Light Green	35 - 38	Dark Blue	47 and Deeper

Imagery Date: © April 14, 2018 DigitalGlobe NextView License
Map Name: 2018_MHC_Sequence.mxd

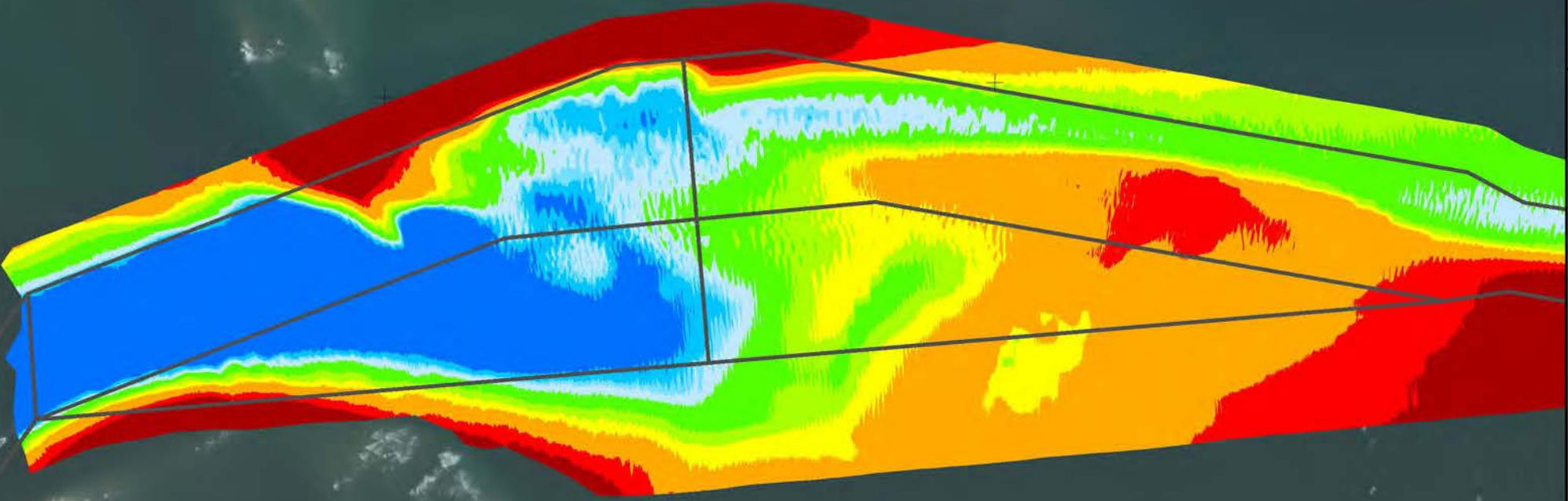
Scale 1 : 9,000



Survey Dates:
November 27 - December 4, 2018

Cutoff

Range A



Fort Macon

34°41'30"N

34°41'0"N

76°39'30"W

76°39'30"W

76°40'0"W

76°40'0"W

76°40'30"W

76°40'30"W

Shackleford
Banks

Cutoff - Range A



US Army Corps
of Engineers
Wilmington District

Depth In Feet

Dark Red	20 and Shallower	Light Blue	38 - 42
Red	20 - 25	Medium Light Blue	42 - 44
Orange	25 - 32	Light Blue	44 - 45
Yellow	32 - 35	Medium Blue	45 - 47
Light Green	35 - 38	Dark Blue	47 and Deeper

Imagery Date: © April 14, 2018 DigitalGlobe NextView License
Map Name: 2018_MHC_Sequence.mxd

Scale 1 : 9,000



Survey Dates:
September 26-27, 2018

Cutoff

Range A

Fort
Macon

76°39'30"W

76°40'0"W

76°40'30"W

34°41'30"N

34°41'0"N

34°41'30"N

34°41'0"N

76°39'30"W

76°40'0"W

76°40'30"W

Shackleford
Banks

Cutoff - Range A



US Army Corps
of Engineers
Wilmington District

Depth In Feet

20 and Shallower

20 - 25

25 - 32

32 - 35

35 - 38

38 - 42

42 - 44

44 - 45

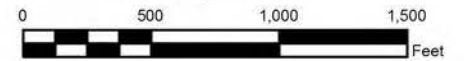
45 - 47

47 and Deeper

Imagery Date: © April 14, 2018 DigitalGlobe NextView License

Map Name: 2018_MHC_Sequence.mxd

Scale 1 : 9,000



Survey Dates:
August 15-23, 2018

Cutoff

Range A

Fort
Macon

34°41'30"N

34°41'0"N

76°39'30"W

76°39'30"W

76°40'0"W

76°40'0"W

76°40'30"W

76°40'30"W

Shackleford
Banks

Cutoff - Range A



US Army Corps
of Engineers
Wilmington District

Depth In Feet	
20 and Shallower	38 - 42
20 - 25	42 - 44
25 - 32	44 - 45
32 - 35	45 - 47
35 - 38	47 and Deeper

Imagery Date: © April 14, 2018 DigitalGlobe NextView License
Map Name: 2018_MHC_Sequence.mxd

Scale 1 : 9,000



Survey Dates:
June 28, 2018

Cutoff

Range A

Fort
Macon

76°39'30"W

76°40'0"W

76°40'30"W

34°41'30"N

34°41'0"N

34°41'30"N

34°41'0"N

76°39'30"W

76°40'0"W

76°40'30"W

Shackleford
Banks

Cutoff - Range A



US Army Corps
of Engineers
Wilmington District

Depth In Feet	
20 and Shallower	38 - 42
20 - 25	42 - 44
25 - 32	44 - 45
32 - 35	45 - 47
35 - 38	47 and Deeper

Imagery Date: © April 14, 2018 DigitalGlobe NextView License
Map Name: 2018_MHC_Sequence.mxd

Scale 1 : 9,000



Survey Dates:
May 30, 2018

Cutoff

Range A

Fort
Macon

76°39'30"W

76°40'0"W

76°40'30"W

34°41'30"N

34°41'0"N

34°41'30"N

34°41'0"N

76°39'30"W

76°40'0"W

76°40'30"W

Shackleford
Banks

Cutoff - Range A



US Army Corps
of Engineers
Wilmington District

Depth In Feet	
20 and Shallower	38 - 42
20 - 25	42 - 44
25 - 32	44 - 45
32 - 35	45 - 47
35 - 38	47 and Deeper

Imagery Date: © April 14, 2018 DigitalGlobe NextView License
Map Name: 2018_MHC_Sequence.mxd

Scale 1 : 9,000



Survey Dates:
April 30, 2018

Cutoff

Range A

Fort
Macon

34°41'30"N

34°41'0"N

76°39'30"W

76°39'30"W

76°40'0"W

76°40'0"W

76°40'30"W

76°40'30"W

Shackleford
Banks

Cutoff - Range A



US Army Corps
of Engineers
Wilmington District

Depth In Feet



Imagery Date: © April 14, 2018 DigitalGlobe NextView License
Map Name: 2018_MHC_Sequence.mxd

Scale 1 : 9,000



Survey Dates:
February 6 & 9, 2018

Cutoff

Range A

Fort
Macon

34°41'30"N

34°41'0"N

76°39'30"W

76°39'30"W

76°40'0"W

76°40'0"W

76°40'30"W

76°40'30"W