

HYDROGRAPHIC SURVEY

U.S. ARMY ENGINEER DISTRICT
CORPS OF ENGINEERS
WILMINGTON, NORTH CAROLINA
Morehead City Harbor

Cutoff & Range A

NORTH CAROLINA

Survey Date: 09 December 2021
Map Date: 13 December 2021
Imagery Date: 03 December 2021
© 2021 DigitalGlobe Nextview License
Scale: 1:3,000
File Name: MC_03_RGA_20211209_CS
Surveyed by: CRP,RW
Mapped by: k7opndjm
Processed by: k7opndjm

200 100 0 200 400 600 800
Feet

1. ELEVATIONS ARE IN FEET AND REFER TO NOAA'S REPORTED MEAN LOWER LOW WATER (MLLW) RELATIVE TO THE 1983-2001 TIDAL EPOCH.
2. PROJECT SURVEYED WITH DISTRICT SURVEY VESSEL "BEAUFORT", USING RTK GPS HORIZONTAL POSITIONING EQUIPMENT AND 200 KHZ SOUNDING EQUIPMENT.
3. HORIZONTAL DATUM NAD 1983. VERTICAL DATUM M.L.L.W.
4. TIDE GAGE LOCATED AT DUKE MARINE LAB. USE OF TIDE VALUES FOR THIS GAGE ARE RESTRICTED TO QUALITY ASSURANCE PURPOSES FOR VERIFICATION OF RTK TIDES. THE WILMINGTON DISTRICT WILL ONLY USE STAFF GAGE TIDE VALUES FOR FINAL MAPPING AND QUANTITY CALCULATIONS IF RTK GPS IS UNAVAILABLE AT THE TIME OF SURVEY.
5. THIS PROJECT WAS DESIGNED BY THE WILMINGTON DISTRICT OF THE U.S. ARMY CORPS OF ENGINEERS. THE INITIALS AND SIGNATURES AND REGISTRATION DESIGNATIONS OF INDIVIDUALS APPEAR ON THESE PROJECT DOCUMENTS WITHIN THE SCOPE OF THEIR EMPLOYMENT AS REQUIRED BY ER1110-1-8152.
6. THE INFORMATION DEPICTED ON THIS SURVEY MAP REPRESENTS THE RESULTS OF SURVEYS MADE ON THE DATES INDICATED AND CAN ONLY BE CONSIDERED AS INDICATING THE GENERAL CONDITIONS EXISTING AT THAT TIME. THESE CONDITIONS ARE SUBJECT TO RAPID CHANGE DUE TO SHALING EVENTS. A PRUDENT MARINER SHOULD NOT RELY EXCLUSIVELY ON THE INFORMATION PROVIDED HERE. REQUIRED BY 33 CFR 209.325.
7. NAVIGATION AIDS LOCATED WITH DISTRICT SURVEY VESSEL. ACCURACY +/- 3 METERS.
8. FOR THE MOST UP TO DATE INFORMATION PLEASE CHECK OUR WEBSITE AT WWW.SAW.USACE.ARMY.MIL

TYPICAL SECTION

1 3
PROJECTIONS
DEPTHS
45' & -47'
Varies
NOT TO SCALE

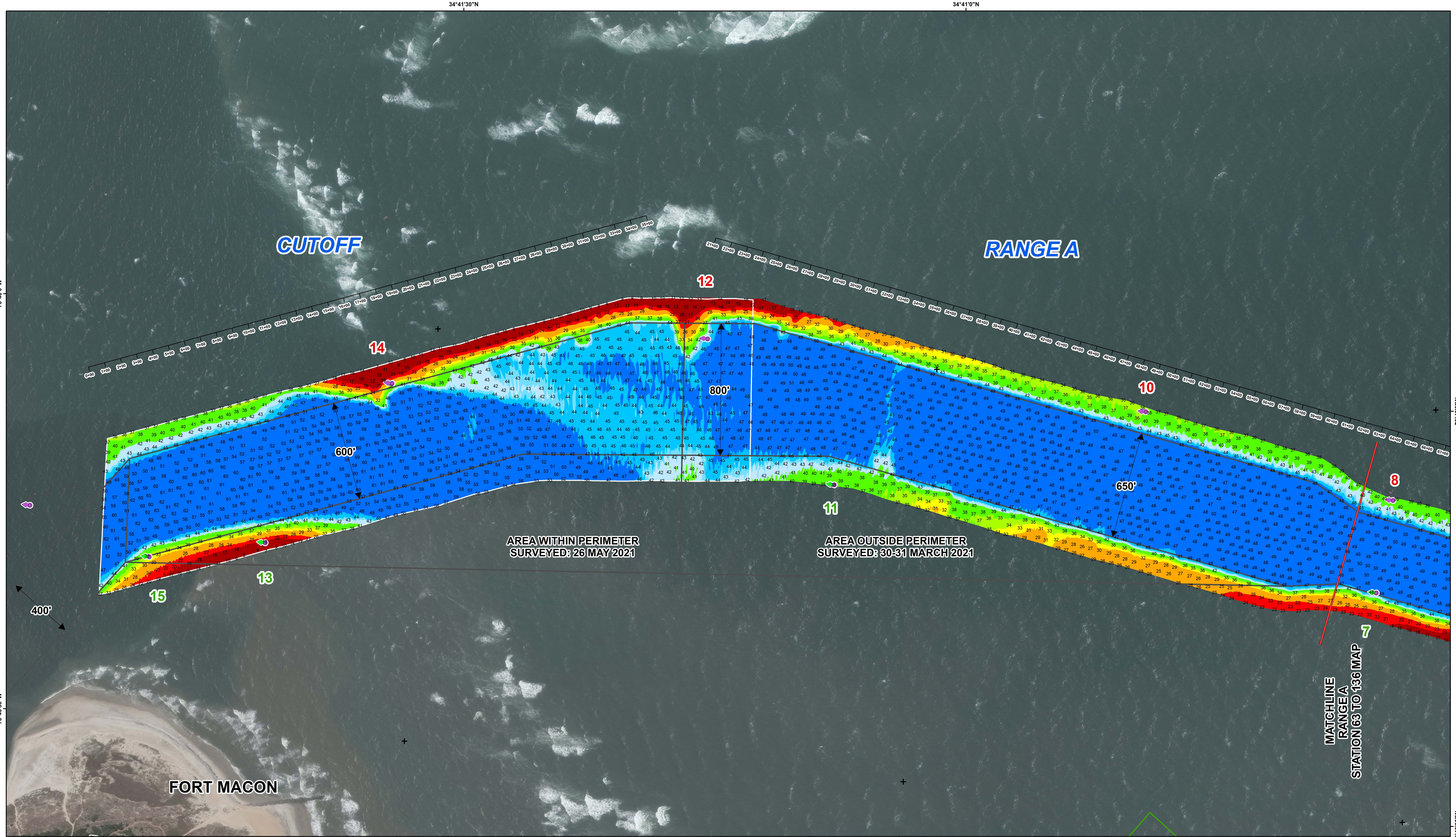
Aids to Navigation

- Can
- Nun
- Green Lighted Buoy
- Red Lighted Buoy
- Junction Marker
- Green Light
- Red Light
- Green Daybeacon
- Red Daybeacon
- Danger Sign
- Mileboard

Depth In Feet

20-25
25-32
32-35
35-38
38-42
42-44
44-46
46-47
47 and Deeper

Matchlines
Navigation Channel



HYDROGRAPHIC SURVEY

U.S. ARMY ENGINEER DISTRICT
CORPS OF ENGINEERS
WILMINGTON, NORTH CAROLINA
Morehead City Harbor

Cutoff & Range A

NORTH CAROLINA

Survey Date: 30-31 March & 26 May 2021
Map Date: 27 May 2021
Imagery Date: 05 May 2021
© 2021 DigitalGlobe Nextview License
Scale: 1:3,000
File Name: MC_03_RGA_20210526_CS
Surveyed by: CRP,RW
Mapped by: k7opndjm
Processed by: k7opndjm

200 100 0 200 400 600 800
Feet

1. ELEVATIONS ARE IN FEET AND REFER TO NOAA'S REPORTED MEAN LOWER LOW WATER (MLLW) RELATIVE TO THE 1983-2001 TIDAL EPOCH.
2. PROJECT SURVEYED WITH DISTRICT SURVEY VESSEL "BEAUFORT", USING RTK GPS HORIZONTAL POSITIONING EQUIPMENT AND 200 KHZ SOUNDING EQUIPMENT.
3. HORIZONTAL DATUM NAD 1983. VERTICAL DATUM M.L.L.W.
4. TIDE GAGE LOCATED AT DUKE MARINE LAB. USE OF TIDE VALUES FOR THIS GAGE ARE RESTRICTED TO QUALITY ASSURANCE PURPOSES FOR VERIFICATION OF RTK TIDES. THE WILMINGTON DISTRICT WILL ONLY USE STAFF GAGE TIDAL VALUES FOR FINAL MAPPING AND QUANTITY CALCULATIONS IF RTK GPS IS UNAVAILABLE AT THE TIME OF SURVEY.
5. THIS PROJECT WAS DESIGNED BY THE WILMINGTON DISTRICT OF THE U.S. ARMY CORPS OF ENGINEERS. THE INITIALS AND SIGNATURES AND REGISTRATION DESIGNATIONS OF INDIVIDUALS APPEAR ON THESE PROJECT DOCUMENTS WITHIN THE SCOPE OF THEIR EMPLOYMENT AS REQUIRED BY ER1110-1-8152.
6. THE INFORMATION DEPICTED ON THIS SURVEY MAP REPRESENTS THE RESULTS OF SURVEYS MADE ON THE DATES INDICATED AND CAN ONLY BE CONSIDERED AS INDICATING THE GENERAL CONDITIONS EXISTING AT THAT TIME. THESE CONDITIONS ARE SUBJECT TO RAPID CHANGE DUE TO CHANGING EVENTS. A PRUDENT MARINER SHOULD NOT RELY EXCLUSIVELY ON THE INFORMATION PROVIDED HERE. REQUIRED BY 33 CFR 209.325.
7. NAVIGATION AIDS LOCATED WITH DISTRICT SURVEY VESSEL. ACCURACY +/- 3 METERS.
8. FOR THE MOST UP TO DATE INFORMATION PLEASE CHECK OUR WEBSITE AT: WWW.SAW.USACE.ARMY.MIL

TYPICAL SECTION

MLLW
-45' & -47'
Varies
NOT TO SCALE

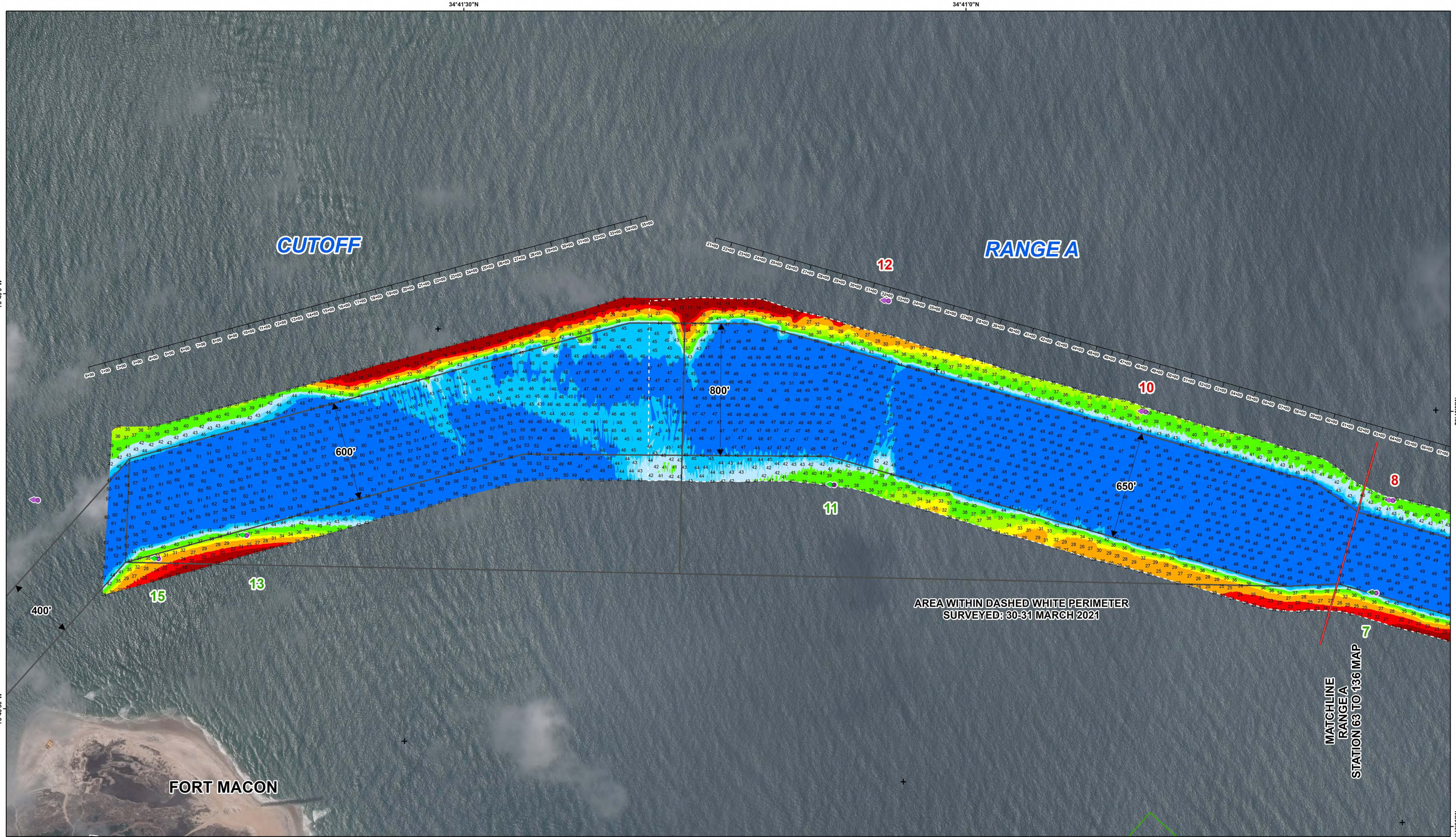
Aids to Navigation

- Can
- Nun
- Green Lighted Buoy
- Red Lighted Buoy
- Junction Marker
- Green Light
- Red Light
- Green Daybeacon
- Red Daybeacon
- Danger Sign
- Mileboard

Depth In Feet

20-25 26-32 33-35 36-38 40-42 44-46 47 and Deeper

Navigation Channel
Placement Areas



HYDROGRAPHIC SURVEY

U.S. ARMY ENGINEER DISTRICT
CORPS OF ENGINEERS
WILMINGTON, NORTH CAROLINA
Morehead City Harbor

Cutoff & Range A

NORTH CAROLINA

Cutoff

Survey Date: 18 & 30-31 March 2021
Map Date: 01 April 2021
Imagery Date: 31 March 2021
© 2021 DigitalGlobe Nextview License
Scale: 1:3,000
File Name: MC_03_RGA_20210330_CS
Surveyed by: CRP,RW
Mapped by: k7opndjm
Processed by: k7opndjm,k7opnjra

200 100 0 200 400 600 800
Feet

1. ELEVATIONS ARE IN FEET AND REFER TO NOAA'S REPORTED MEAN LOWER LOW WATER (MLLW) RELATIVE TO THE 1983-2001 TIDAL EPOCH.
2. PROJECT SURVEYED WITH DISTRICT SURVEY VESSEL "BEAUFORT", USING RTK GPS HORIZONTAL POSITIONING EQUIPMENT AND 200 KHZ SOUNDING EQUIPMENT.
3. HORIZONTAL DATUM NAD 1983. VERTICAL DATUM M.L.L.W.
4. TIDE GAGE LOCATED AT DUKE MARINE LAB. USE OF TIDE VALUES FOR THIS GAGE ARE RESTRICTED TO QUALITY ASSURANCE PURPOSES FOR VERIFICATION OF RTK TIDES. THE WILMINGTON DISTRICT WILL ONLY USE STAFF GAGE TIDE VALUES FOR FINAL MAPPING AND QUANTITY CALCULATIONS IF RTK GPS IS UNAVAILABLE AT THE TIME OF SURVEY.
5. THIS PROJECT WAS DESIGNED BY THE WILMINGTON DISTRICT OF THE U.S. ARMY CORPS OF ENGINEERS. THE INITIALS AND SIGNATURES AND REGISTRATION DESIGNATIONS OF INDIVIDUALS APPEAR ON THESE PROJECT DOCUMENTS WITHIN THE SCOPE OF THEIR EMPLOYMENT AS REQUIRED BY ER110-1-8152.
6. THE INFORMATION DEPICTED ON THIS SURVEY MAP REPRESENTS THE RESULTS OF SURVEYS MADE ON THE DATES INDICATED AND CAN ONLY BE CONSIDERED AS INDICATING THE GENERAL CONDITIONS EXISTING AT THAT TIME. THESE CONDITIONS ARE SUBJECT TO RAPID CHANGE DUE TO SHALING EVENTS. A PRUDENT MARINER SHOULD NOT RELY EXCLUSIVELY ON THE INFORMATION PROVIDED HERE. REQUIRED BY 33 CFR 209.325.
7. NAVIGATION AIDS LOCATED WITH DISTRICT SURVEY VESSEL. ACCURACY +/- 3 METERS.
8. FOR THE MOST UP TO DATE INFORMATION PLEASE CHECK OUR WEBSITE AT WWW.SAW.USACE.ARMY.MIL

TYPICAL SECTION

1
3
PROJECT
NOT TO SCALE

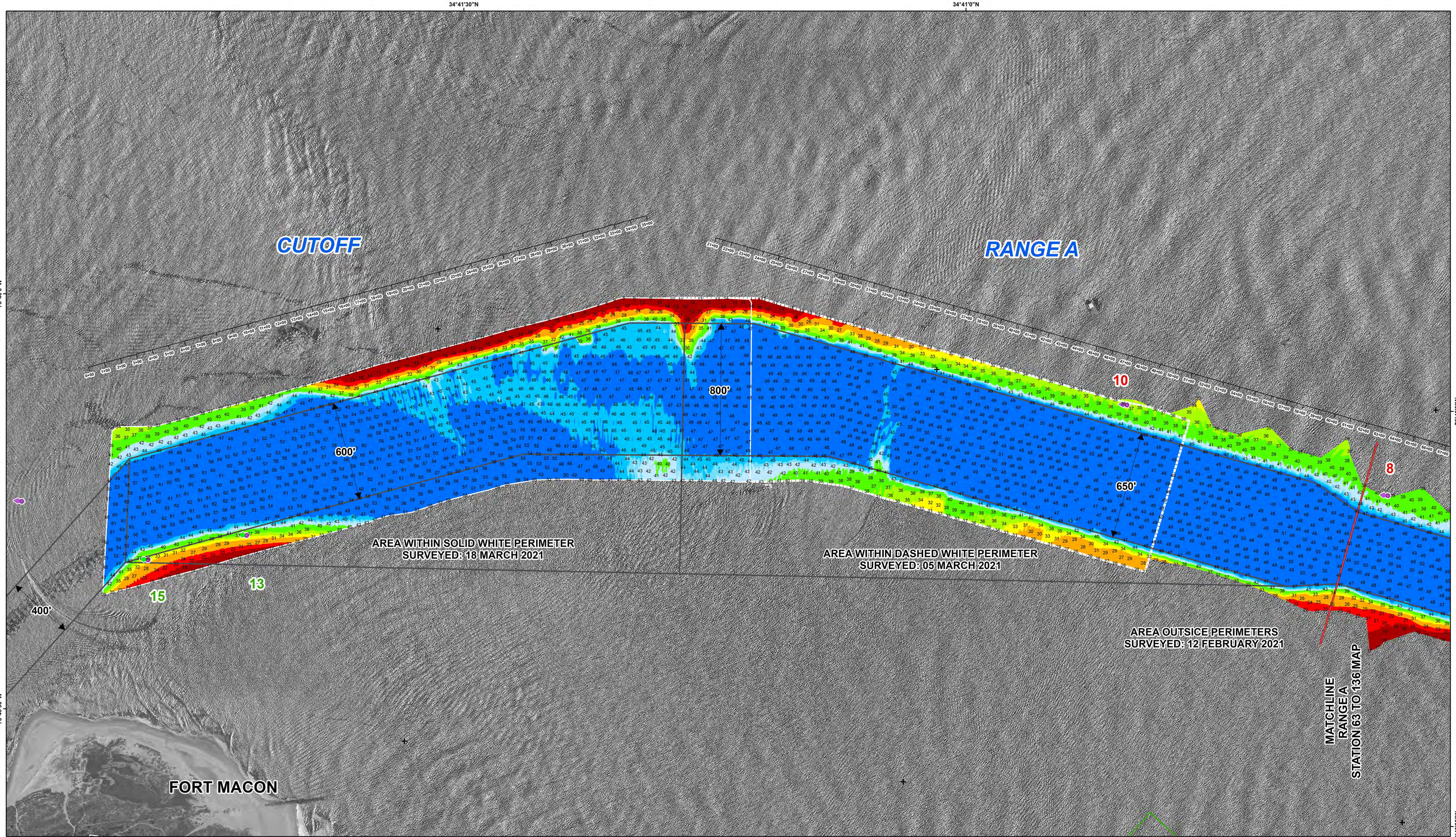
Aids to Navigation

- Can
- Nun
- Green Lighted Buoy
- Red Lighted Buoy
- Junction Marker
- Green Light
- Red Light
- Green Daybeacon
- Red Daybeacon
- Danger Sign
- Mileboard

Depth In Feet

20-25
25-32
32-35
35-38
38-42
42-44
44-45
45-47
47 and Deeper

Navigation Channel
Placement Areas



HYDROGRAPHIC SURVEY

U.S. ARMY ENGINEER DISTRICT
CORPS OF ENGINEERS
WILMINGTON, NORTH CAROLINA
Morehead City Harbor

Cutoff & Range A

NORTH CAROLINA

Cutoff

Survey Date: 12 February; 05 & 18 March 2021
Map Date: 19 March 2021
Imagery Date: 04 March 2021
© 2020 DigitalGlobe Nextview License
Scale: 1:3,000
File Name: MC_03_RGA_20210318_AD
Surveyed by: CRP,RW
Mapped by: k7opndjm
Processed by: k7opndjm,k7opnjra

200 100 0 200 400 600 800
Feet

1. ELEVATIONS ARE IN FEET AND REFER TO NOAA'S REPORTED MEAN LOWER LOW WATER (MLLW) RELATIVE TO THE 1983-2001 TIDAL EPOCH.
2. PROJECT SURVEYED WITH DISTRICT SURVEY VESSEL "BEAUFORT", USING RTK GPS HORIZONTAL POSITIONING EQUIPMENT AND 200 KHZ SOUNDING EQUIPMENT.
3. HORIZONTAL DATUM NAD 1983. VERTICAL DATUM M.L.L.W.
4. TIDE GAGE LOCATED AT DUKE MARINE LAB. USE OF TIDE VALUES FOR THIS GAGE ARE RESTRICTED TO QUALITY ASSURANCE PURPOSES FOR VERIFICATION OF RTK TIDES. THE WILMINGTON DISTRICT WILL ONLY USE STAFF GAGE TIDAL VALUES FOR FINAL MAPPING AND QUANTITY CALCULATIONS IF RTK GPS IS UNAVAILABLE AT THE TIME OF SURVEY.
5. THIS PROJECT WAS DESIGNED BY THE WILMINGTON DISTRICT OF THE U.S. ARMY CORPS OF ENGINEERS. THE INITIALS AND SIGNATURES AND REGISTRATION DESIGNATIONS OF INDIVIDUALS APPEAR ON THESE PROJECT DOCUMENTS WITHIN THE SCOPE OF THEIR EMPLOYMENT AS REQUIRED BY ER110-1-8152.
6. THE INFORMATION DEPICTED ON THIS SURVEY MAP REPRESENTS THE RESULTS OF SURVEYS MADE ON THE DATES INDICATED AND CAN ONLY BE CONSIDERED AS INDICATING THE GENERAL CONDITIONS EXISTING AT THAT TIME. THESE CONDITIONS ARE SUBJECT TO RAPID CHANGE DUE TO CHANGING EVENTS. A PRUDENT MARINER SHOULD NOT RELY EXCLUSIVELY ON THE INFORMATION PROVIDED HERE. REQUIRED BY 33 CFR 209.325.
7. NAVIGATION AIDS LOCATED WITH DISTRICT SURVEY VESSEL. ACCURACY +/- 3 METERS.
8. FOR THE MOST UP TO DATE INFORMATION PLEASE CHECK OUR WEBSITE AT WWW.SAW.USACE.ARMY.MIL

TYPICAL SECTION

MLLW
-45' & -47'
Varies
NOT TO SCALE

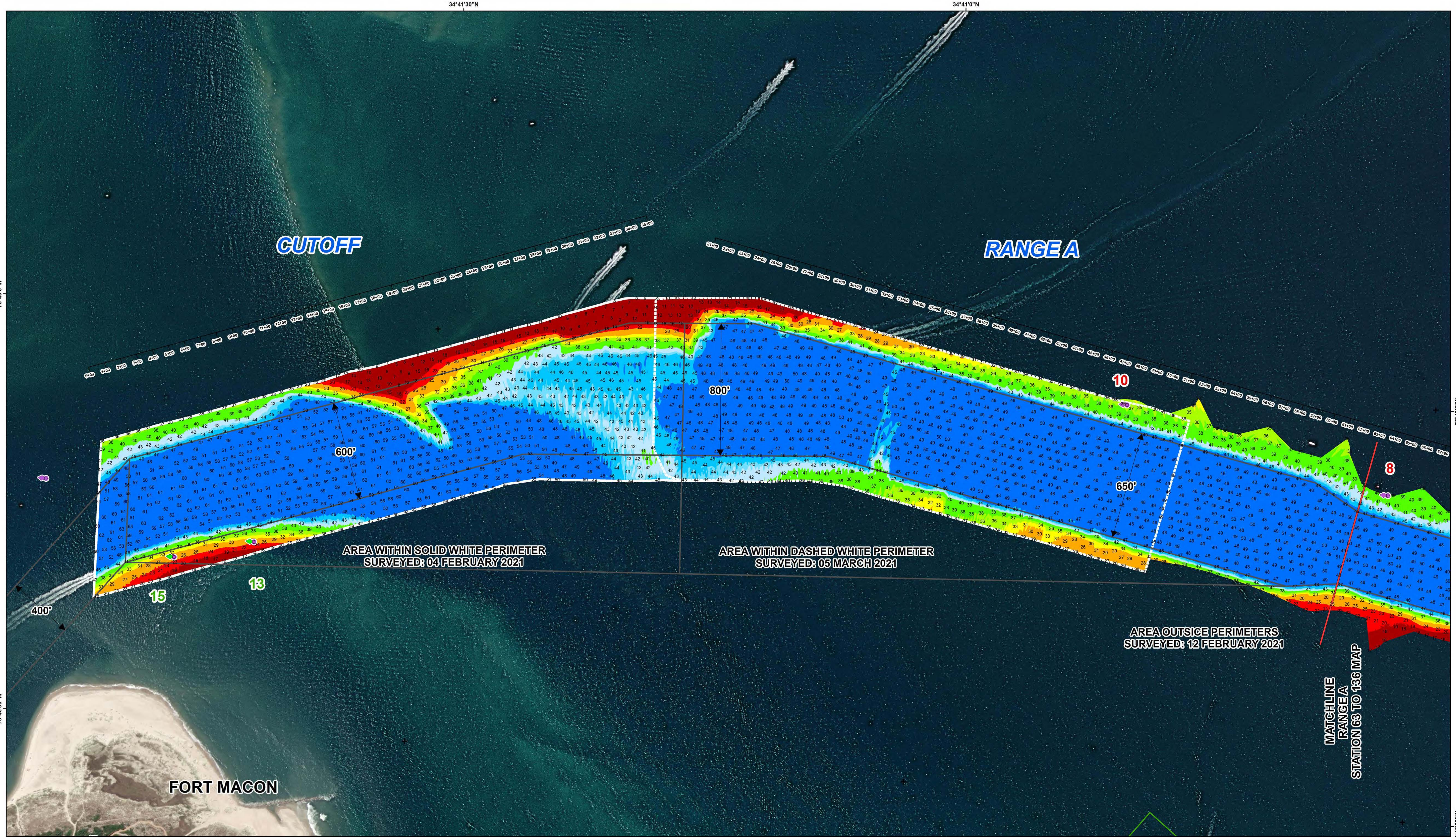
Aids to Navigation

- Can
- Nun
- Green Lighted Buoy
- Red Daybeacon
- Red Lighted Buoy
- Junction Marker
- Green Light
- Red Light
- Green Daybeacon
- Danger Sign
- Mileboard

Depth In Feet

20 and Shallower
20-25
26-32
33-35
36-38
39-42
43-44
45-47
47 and Deeper

Navigation Channel
Placement Areas



HYDROGRAPHIC SURVEY

U.S. ARMY ENGINEER DISTRICT
CORPS OF ENGINEERS
WILMINGTON, NORTH CAROLINA
Morehead City Harbor

Cutoff & Range A

Survey Date: 04 & 12 February; 05 March 2021
Map Date: 08 March 2021
Imagery Date: 16 December 2020
© 2020 DigitalGlobe Nextview License
Scale: 1:3,000
File Name: MC_03_RGA_20210305_AD
Surveyed by: CRP,RW
Mapped by: k7opndjm
Processed by: k7opndjm

- ELEVATIONS ARE IN FEET AND REFER TO NOAA'S REPORTED MEAN LOWER LOW WATER (MLLW) RELATIVE TO THE 1983-2001 TIDAL EPOCH.
- PROJECT SURVEYED WITH DISTRICT SURVEY VESSEL "BEAUFORT", USING RTK GPS HORIZONTAL POSITIONING EQUIPMENT AND 200 KHZ SOUNDING EQUIPMENT.
- HORIZONTAL DATUM NAD 1983. VERTICAL DATUM M.L.L.W.
- TIDE GAGE LOCATED AT DUKE MARINE LAB. USE OF TIDE VALUES FOR THIS GAGE ARE RESTRICTED TO QUALITY ASSURANCE PURPOSES FOR VERIFICATION OF RTK TIDES. THE WILMINGTON DISTRICT WILL ONLY USE STAFF GAGE TIDE VALUES FOR FINAL MAPPING AND QUANTITY CALCULATIONS IF RTK GPS IS UNAVAILABLE AT THE TIME OF SURVEY.
- THIS PROJECT WAS DESIGNED BY THE WILMINGTON DISTRICT OF THE U.S. ARMY CORPS OF ENGINEERS. THE INITIALS AND SIGNATURES AND REGISTRATION DESIGNATIONS OF INDIVIDUALS APPEAR ON THESE PROJECT DOCUMENTS WITHIN THE SCOPE OF THEIR EMPLOYMENT AS REQUIRED BY ER1110-1-8152.
- THE INFORMATION DEPICTED ON THIS SURVEY MAP REPRESENTS THE RESULTS OF SURVEYS MADE ON THE DATES INDICATED AND CAN ONLY BE CONSIDERED AS INDICATING THE GENERAL CONDITIONS EXISTING AT THAT TIME. THESE CONDITIONS ARE SUBJECT TO RAPID CHANGE DUE TO SHALING EVENTS. A PRUDENT MARINER SHOULD NOT RELY EXCLUSIVELY ON THE INFORMATION PROVIDED HERE. REQUIRED BY 33 CFR 209.325.
- NAVIGATION AIDS LOCATED WITH DISTRICT SURVEY VESSEL. ACCURACY +/- 3 METERS.
- FOR THE MOST UP TO DATE INFORMATION PLEASE CHECK OUR WEBSITE AT WWW.SAW.USACE.ARMY.MIL

TYPICAL SECTION

1
3

PROJECT

DEPTH

Varies

NOT TO SCALE

Aids to Navigation

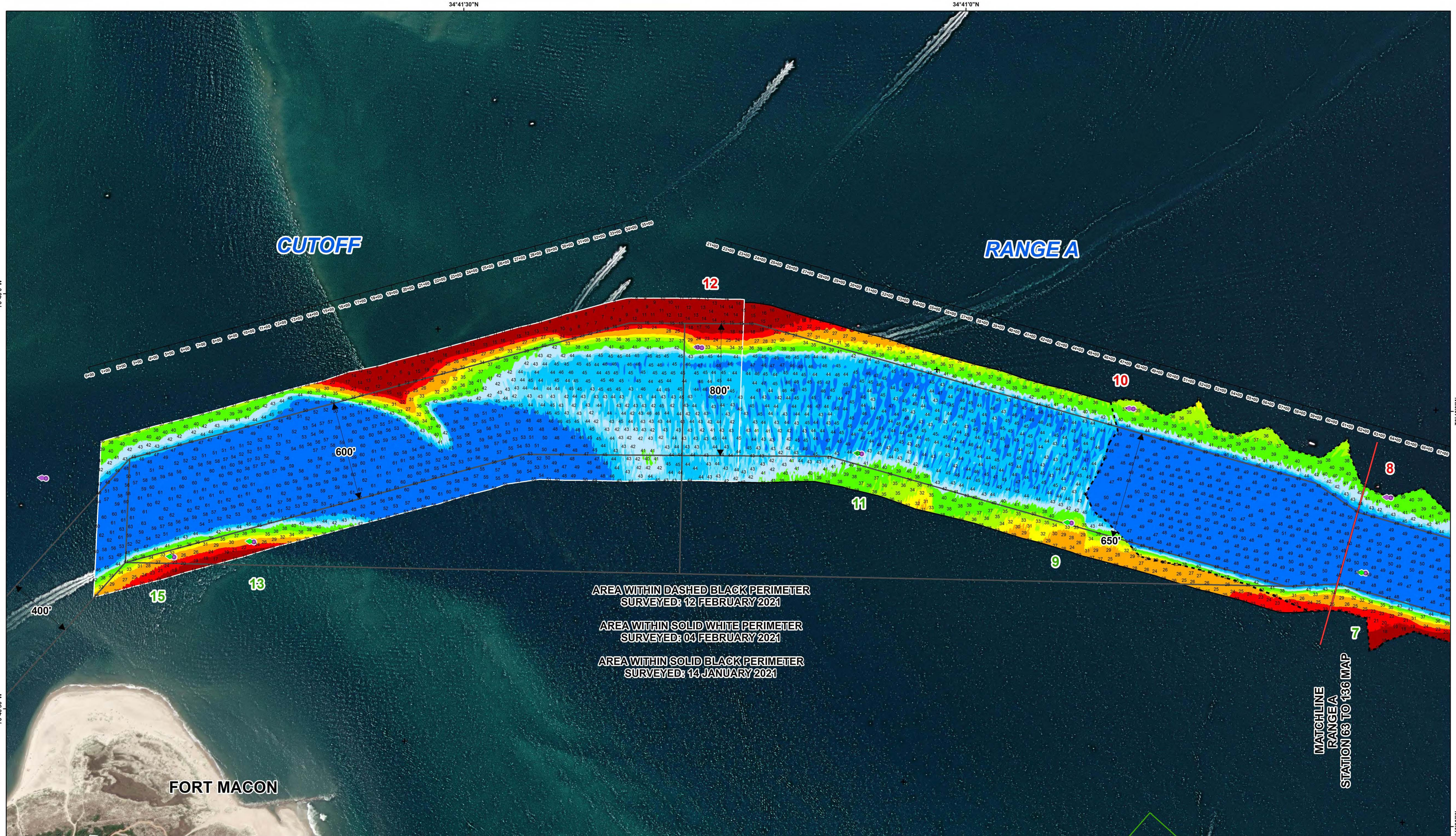
- Can
- Nun
- Green Lighted Buoy
- Red Lighted Buoy
- Junction Marker
- Green Light
- Red Light
- Green Daybeacon
- Red Daybeacon
- Danger Sign
- Mileboard

Depth In Feet

20 and Shallower

Navigation Channel

Placement Areas



HYDROGRAPHIC SURVEY

U.S. ARMY ENGINEER DISTRICT
CORPS OF ENGINEERS
WILMINGTON, NORTH CAROLINA
Morehead City Harbor

Cutoff & Range A

NORTH CAROLINA

Cutoff

Survey Date: 14 January & 04 February 2021
Map Date: 16 February 2021
Imagery Date: 16 December 2020
© 2020 DigitalGlobe Nextview License
Scale: 1:3,000
File Name: MC_03_RGA_20210212_AD_CUTOFF
Surveyed by: CRP,RW
Mapped by: k7opndjm
Processed by: k7opndjm

200 100 0 200 400 600 800
Feet

1. ELEVATIONS ARE IN FEET AND REFER TO NOAA'S REPORTED MEAN LOWER LOW WATER (MLLW) RELATIVE TO THE 1983-2001 TIDAL EPOCH.
2. PROJECT SURVEYED WITH DISTRICT SURVEY VESSEL "BEAUFORT", USING RTK GPS HORIZONTAL POSITIONING EQUIPMENT AND 200 KHZ SOUNDING EQUIPMENT.
3. HORIZONTAL DATUM NAD 1983, VERTICAL DATUM M.L.L.W.
4. TIDE GAGE LOCATED AT DUKE MARINE LAB. USE OF TIDE VALUES FOR THIS GAGE ARE RESTRICTED TO QUALITY ASSURANCE PURPOSES FOR VERIFICATION OF RTK TIDES. THE WILMINGTON DISTRICT WILL ONLY USE STAFF GAGE TIDE VALUES FOR FINAL MAPPING AND QUANTITY CALCULATIONS IF RTK GPS IS UNAVAILABLE AT THE TIME OF SURVEY.
5. THIS PROJECT WAS DESIGNED BY THE WILMINGTON DISTRICT OF THE U.S. ARMY CORPS OF ENGINEERS. THE INITIALS AND SIGNATURES AND REGISTRATION DESIGNATIONS OF INDIVIDUALS APPEAR ON THESE PROJECT DOCUMENTS WITHIN THE SCOPE OF THEIR EMPLOYMENT AS REQUIRED BY ER1110-1-8152.
6. THE INFORMATION DEPICTED ON THIS SURVEY MAP REPRESENTS THE RESULTS OF SURVEYS MADE ON THE DATES INDICATED AND CAN ONLY BE CONSIDERED AS INDICATING THE GENERAL CONDITIONS EXISTING AT THAT TIME. THESE CONDITIONS ARE SUBJECT TO RAPID CHANGE DUE TO SHALLOING EVENTS. A PRUDENT MARINER SHOULD NOT RELY EXCLUSIVELY ON THE INFORMATION PROVIDED HERE, REQUIRED BY 33 CFR 209.325.
7. NAVIGATION AIDS LOCATED WITH DISTRICT SURVEY VESSEL, ACCURACY +/- 3 METERS.
8. FOR THE MOST UP TO DATE INFORMATION PLEASE CHECK OUR WEBSITE AT WWW.USACE.ARMY.MIL

TYPICAL SECTION

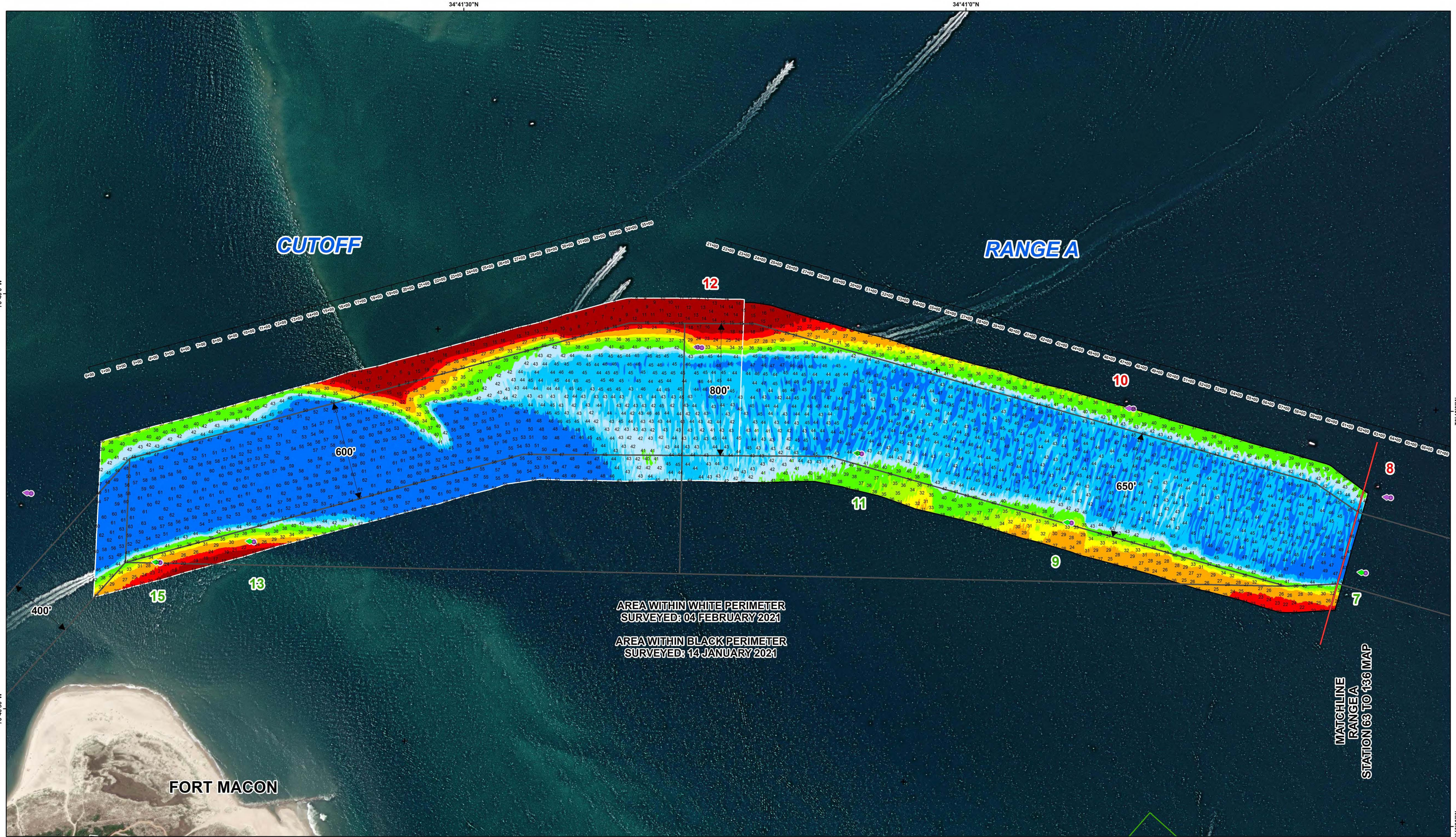
PROJECT
NOT TO SCALE

Aids to Navigation

- Can
- Nun
- Green Lighted Buoy
- Red Lighted Buoy
- Junction Marker
- Green Light
- Red Light
- Green Daybeacon
- Red Daybeacon
- Danger Sign
- Mileboard

Depth In Feet

20 and Shallower
Navigation Channel
Placement Areas



HYDROGRAPHIC SURVEY

U.S. ARMY ENGINEER DISTRICT
CORPS OF ENGINEERS
WILMINGTON, NORTH CAROLINA
Morehead City Harbor

Cutoff & Range A

NORTH CAROLINA

Cutoff

Survey Date: 14 January & 04 February 2021
Map Date: 05 February 2021
Imagery Date: 16 December 2020
© 2020 DigitalGlobe Nextview License
Scale: 1:3,000
File Name: MC_03_RGA_20210204_BD
Surveyed by: CRP,RW
Mapped by: k7opndjm
Processed by: k7opndjm

200 100 0 200 400 600 800
Feet

1. ELEVATIONS ARE IN FEET AND REFER TO NOAA'S REPORTED MEAN LOWER LOW WATER (MLLW) RELATIVE TO THE 1983-2001 TIDAL EPOCH.
2. PROJECT SURVEYED WITH DISTRICT SURVEY VESSEL "BEAUFORT", USING RTK GPS HORIZONTAL POSITIONING EQUIPMENT AND 200 KHZ SOUNDING EQUIPMENT.
3. HORIZONTAL DATUM NAD 1983, VERTICAL DATUM M.L.L.W.
4. TIDE GAGE LOCATED AT DUKE MARINE LAB. USE OF TIDE VALUES FOR THIS GAGE ARE RESTRICTED TO QUALITY ASSURANCE PURPOSES FOR VERIFICATION OF RTK TIDES. THE WILMINGTON DISTRICT WILL ONLY USE STAFF GAGE TIDE VALUES FOR FINAL MAPPING AND QUANTITY CALCULATIONS IF RTK GPS IS UNAVAILABLE AT THE TIME OF SURVEY.
5. THIS PROJECT WAS DESIGNED BY THE WILMINGTON DISTRICT OF THE U.S. ARMY CORPS OF ENGINEERS. THE INITIALS AND SIGNATURES AND REGISTRATION DESIGNATIONS OF INDIVIDUALS APPEAR ON THESE PROJECT DOCUMENTS WITHIN THE SCOPE OF THEIR EMPLOYMENT AS REQUIRED BY ER1110-1-8152.
6. THE INFORMATION DEPICTED ON THIS SURVEY MAP REPRESENTS THE RESULTS OF SURVEYS MADE ON THE DATES INDICATED AND CAN ONLY BE CONSIDERED AS INDICATING THE GENERAL CONDITIONS EXISTING AT THAT TIME. THESE CONDITIONS ARE SUBJECT TO RAPID CHANGE DUE TO SHOALING EVENTS. A PRUDENT MARINER SHOULD NOT RELY EXCLUSIVELY ON THE INFORMATION PROVIDED HERE, REQUIRED BY 33 CFR 209.325.
7. NAVIGATION AIDS LOCATED WITH DISTRICT SURVEY VESSEL, ACCURACY +/- 3 METERS.
8. FOR THE MOST UP TO DATE INFORMATION PLEASE CHECK OUR WEBSITE AT WWW.SAW.USACE.ARMY.MIL

TYPICAL SECTION

1
3
PROJECT
DEPTH
-45' & -47'
Varies
NOT TO SCALE

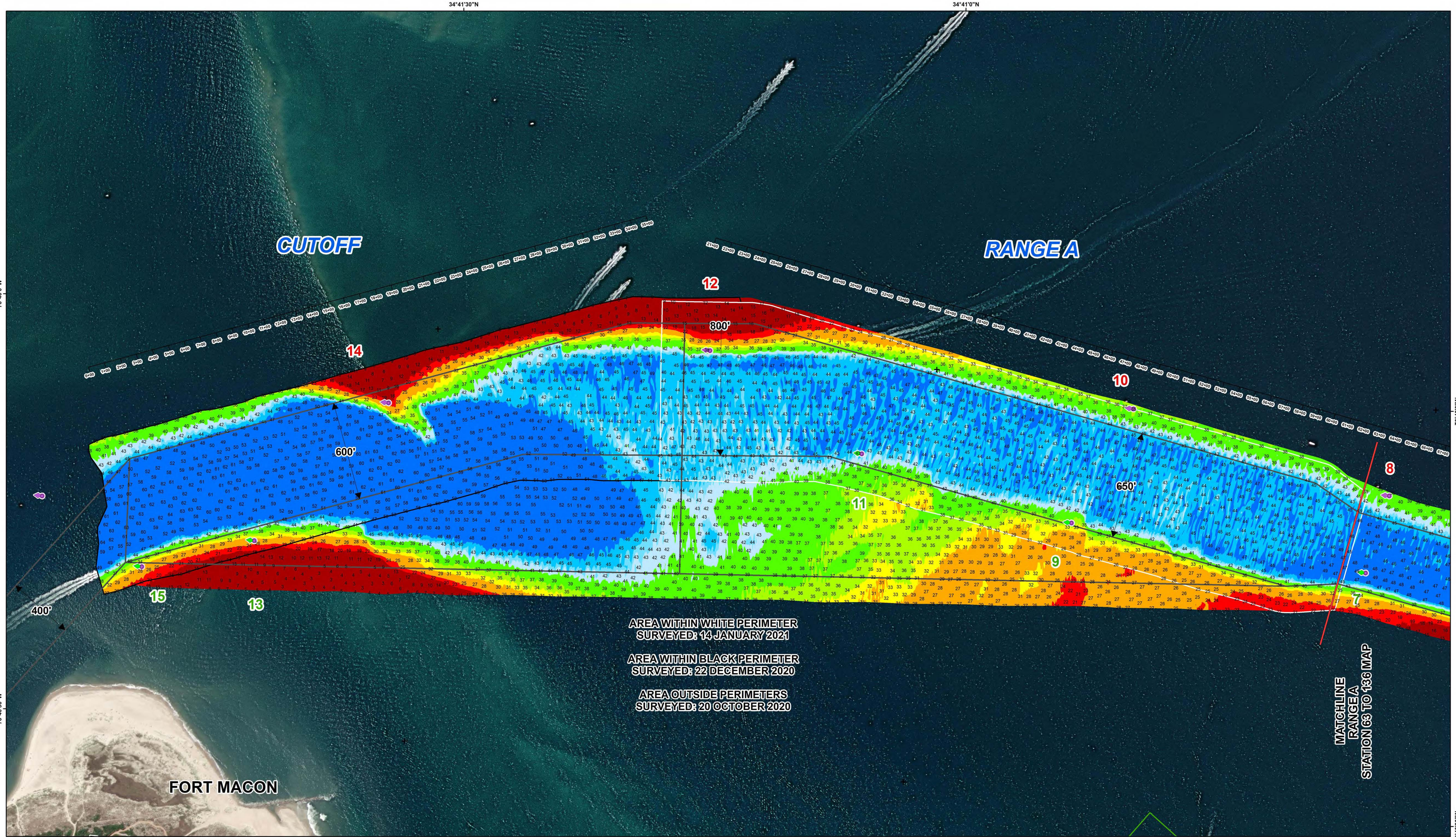
Aids to Navigation

- Can
- Nun
- Green Lighted Buoy
- Red Lighted Buoy
- Junction Marker
- Green Light
- Red Light
- Green Daybeacon
- Red Daybeacon
- Danger Sign
- Mileboard

Depth In Feet

20-25 25-32 32-35 35-38 38-42 42-44 44-46 46-47 47 and Deeper

Navigation Channel
Placement Areas



HYDROGRAPHIC SURVEY

U.S. ARMY ENGINEER DISTRICT
CORPS OF ENGINEERS
WILMINGTON, NORTH CAROLINA
Morehead City Harbor

Cutoff & Range A

NORTH CAROLINA

Cutoff

Survey Date: 14 January 2021
Map Date: 19 January 2021
Imagery Date: 16 December 2020
© 2020 DigitalGlobe Nextview License
Scale: 1:3,000
File Name: MC_03_RGA_20210114_BD
Surveyed by: CRP,RW
Mapped by: K7OPNDJM
Processed by: K7OPNDJM

200 100 0 200 400 600 800
Feet

1. ELEVATIONS ARE IN FEET AND REFER TO NOAA'S REPORTED MEAN LOWER LOW WATER (MLLW) RELATIVE TO THE 1983-2001 TIDAL EPOCH.

2. PROJECT SURVEYED WITH DISTRICT SURVEY VESSEL "BEAUFORT", USING RTK GPS HORIZONTAL POSITIONING EQUIPMENT AND 200 KHZ SOUNDING EQUIPMENT.

3. HORIZONTAL DATUM NAD 1983. VERTICAL DATUM M.L.L.W.

4. TIDE GAGE LOCATED AT DUKE MARINE LAB. USE OF TIDE VALUES FOR THIS GAGE ARE RESTRICTED TO QUALITY ASSURANCE PURPOSES FOR VERIFICATION OF RTK TIDES. THE WILMINGTON DISTRICT WILL ONLY USE STAFF GAGE TIDE VALUES FOR FINAL MAPPING AND QUANTITY CALCULATIONS IF RTK GPS IS UNAVAILABLE AT THE TIME OF SURVEY.

5. THIS PROJECT WAS DESIGNED BY THE WILMINGTON DISTRICT OF THE U.S. ARMY CORPS OF ENGINEERS. THE INITIALS AND SIGNATURES AND REGISTRATION DESIGNATIONS OF INDIVIDUALS APPEAR ON THESE PROJECT DOCUMENTS WITHIN THE SCOPE OF THEIR EMPLOYMENT AS REQUIRED BY ER1110-1-8152.

6. THE INFORMATION DEPICTED ON THIS SURVEY MAP REPRESENTS THE RESULTS OF SURVEYS MADE ON THE DATES INDICATED AND CAN ONLY BE CONSIDERED AS INDICATING THE GENERAL CONDITIONS EXISTING AT THAT TIME. THESE CONDITIONS ARE SUBJECT TO RAPID CHANGE DUE TO SHALING EVENTS. A PRUDENT MARINER SHOULD NOT RELY EXCLUSIVELY ON THE INFORMATION PROVIDED HERE. REQUIRED BY 33 CFR 209.325.

7. NAVIGATION AIDS LOCATED WITH DISTRICT SURVEY VESSEL. ACCURACY +/- 3 METERS.

8. FOR THE MOST UP TO DATE INFORMATION PLEASE CHECK OUR WEBSITE AT WWW.SAW.USACE.ARMY.MIL

TYPICAL SECTION

1
3
PROJECT
NOT TO SCALE

Aids to Navigation

- Can
- Nun
- Green Lighted Buoy
- Red Lighted Buoy
- Junction Marker
- Green Light
- Red Light
- Green Daybeacon
- Red Daybeacon
- Danger Sign
- Mileboard

Depth In Feet

20-25 26-32 33-35 36-38 39-42 43-44 45-47 48 and Deeper

Navigation Channel
Placement Areas