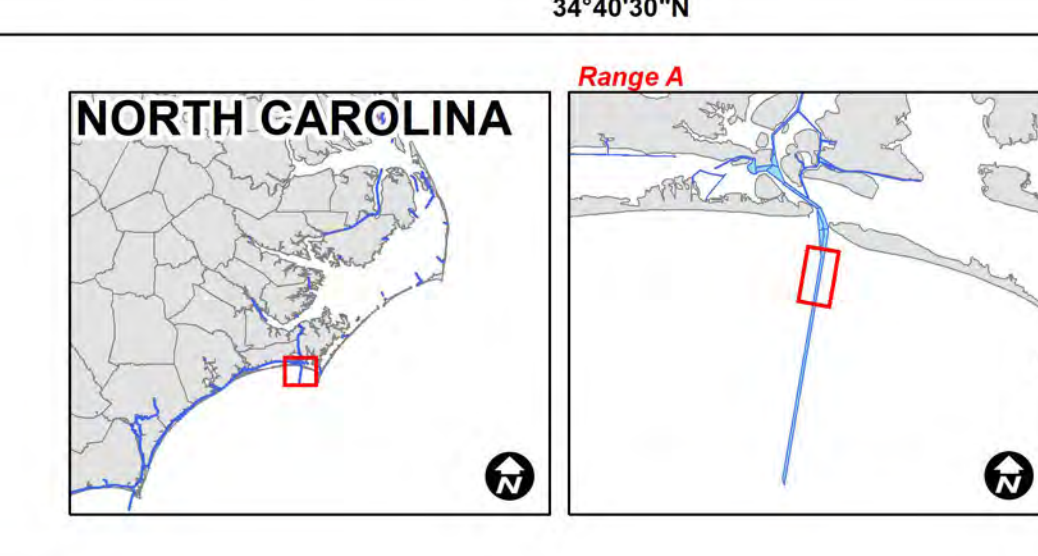


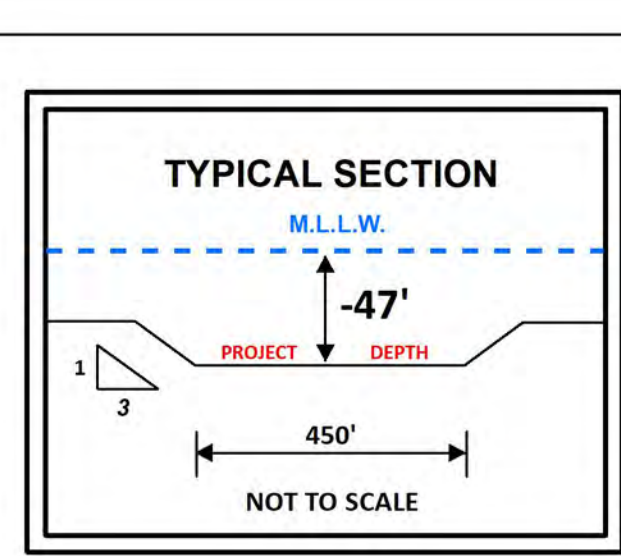
**HYDROGRAPHIC SURVEY**  
 U.S. ARMY ENGINEER DISTRICT  
 CORPS OF ENGINEERS  
 WILMINGTON, NORTH CAROLINA  
 Morehead City Harbor  
**Range A**  
**St. 63 to 136**



Survey Date: 22 November 2022  
 Map Date: 28 November 2022  
 Scale: 1:3,000  
 File Name: MC\_03\_RGA\_20221122\_CS  
 Surveyed by: TDM, JBD  
 Mapped by: k7opnlac  
 Processed by: k7opnlac

200 100 0 200 400 600 800  
 Feet

- ELEVATIONS ARE IN FEET AND REFER TO NOAA'S REPORTED MEAN LOWER LOW WATER (MLLW) RELATIVE TO THE 1983-2001 TIDAL EPOCH.
- PROJECT SURVEYED WITH DISTRICT SURVEY VESSEL "BEAUFORT", USING RTK GPS HORIZONTAL POSITIONING EQUIPMENT AND 200 KHZ SOUNDING EQUIPMENT.
- HORIZONTAL DATUM NAD 1983. VERTICAL DATUM M.L.L.W.
- TIDE GAGE LOCATED AT DUKE MARINE LAB. USE OF TIDE VALUES FOR THIS GAGE ARE RESTRICTED TO QUALITY ASSURANCE PURPOSES FOR VERIFICATION OF RTK TIDES. THE WILMINGTON DISTRICT WILL ONLY USE STAFF GAGE TIDAL VALUES FOR FINAL MAPPING AND QUANTITY CALCULATIONS IF RTK GPS IS UNAVAILABLE AT THE TIME OF SURVEY.
- THIS PROJECT WAS DESIGNED BY THE WILMINGTON DISTRICT OF THE U.S. ARMY CORPS OF ENGINEERS. THE INITIALS AND SIGNATURES AND REGISTRATION DESIGNATIONS OF INDIVIDUALS APPEAR ON THESE PROJECT DOCUMENTS WITHIN THE SCOPE OF THEIR EMPLOYMENT AS REQUIRED BY ER110-1-8152.
- THE INFORMATION DEPICTED ON THIS SURVEY MAP REPRESENTS THE RESULTS OF SURVEYS MADE ON THE DATES INDICATED AND CAN ONLY BE CONSIDERED AS INDICATING THE GENERAL CONDITIONS EXISTING AT THAT TIME. THESE CONDITIONS ARE SUBJECT TO RAPID CHANGE DUE TO SHALING EVENTS. A PRUDENT MARINER SHOULD NOT RELY EXCLUSIVELY ON THE INFORMATION PROVIDED HERE. REQUIRED BY 33 CFR 209.325.
- NAVIGATION AIDS LOCATED WITH DISTRICT SURVEY VESSEL. ACCURACY +/- 3 METERS.
- FOR THE MOST UP TO DATE INFORMATION PLEASE CHECK OUR WEBSITE AT WWW.SAW.USACE.ARMY.MIL



**Aids to Navigation**

- Can
- Nun
- Green Lighted Buoy
- Red Lighted Buoy
- Junction Marker
- Green Light
- Red Light
- Green Daybeacon
- Red Daybeacon
- Danger Sign
- Mileboard

**Depth In Feet**

20 and Shallower  
 20 25 32 35 38 42 44 45 47 and Deeper

Navigation Channel