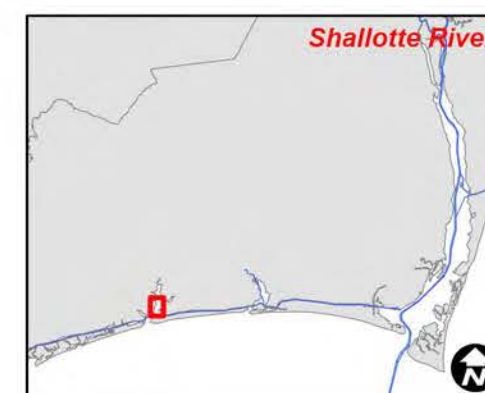




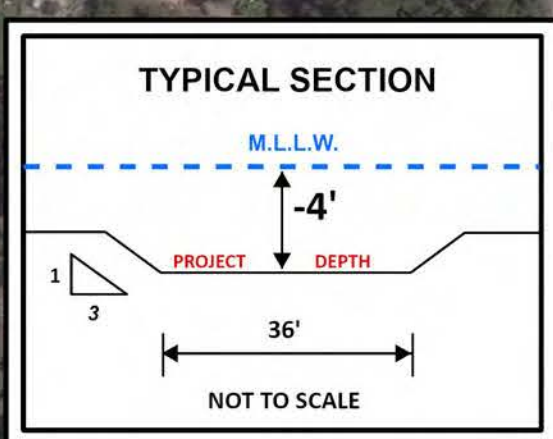
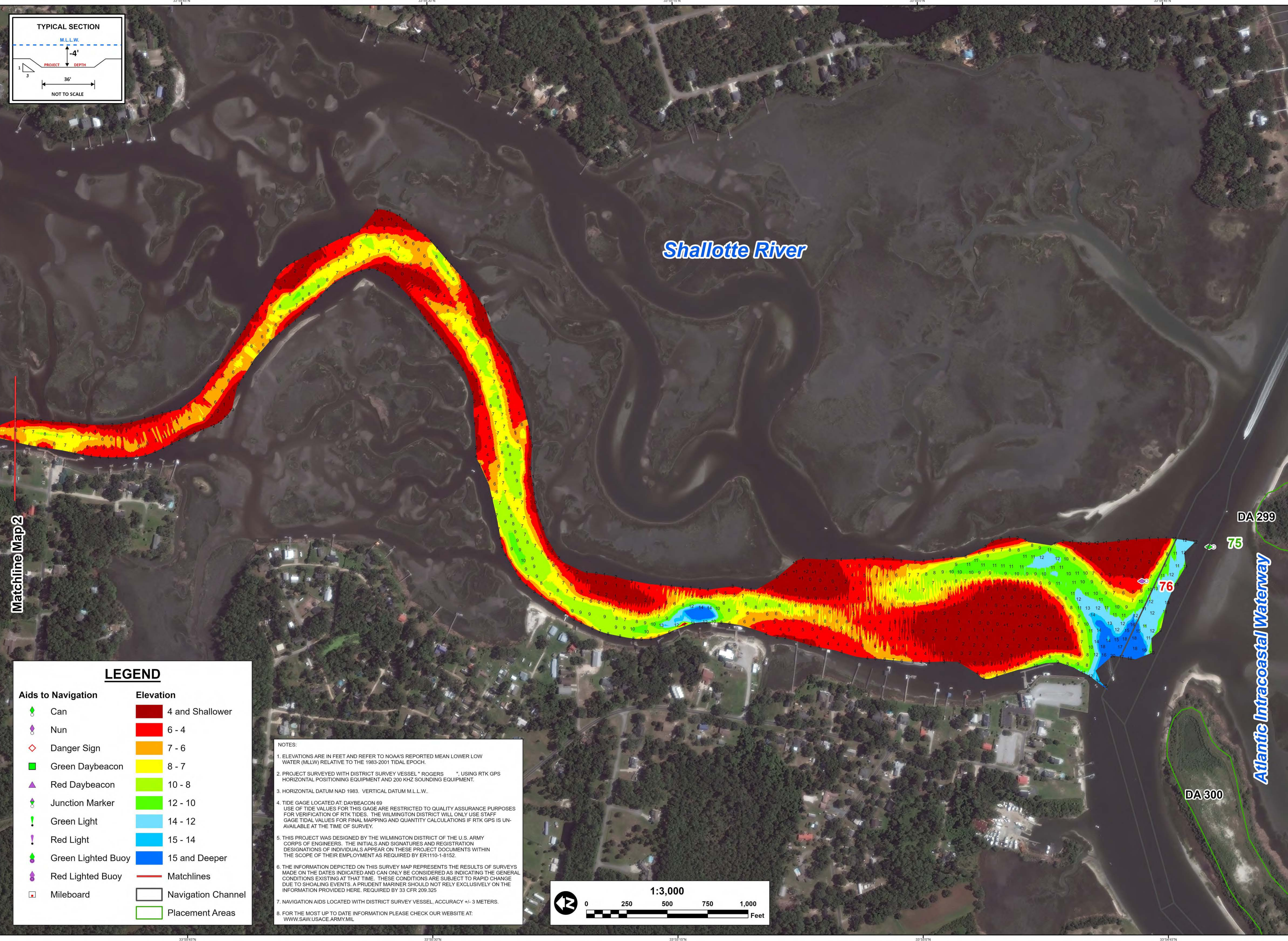
US Army Corps of Engineers
Wilmington District



SURVEY DATE: 25 & 30 OCTOBER 2023	SURVEYED BY: LMT, DJD
MAP DATE: 31 OCTOBER 2023	MAPPED BY: K7PDPSPGD
MAP SCALE: 1:3,000	PROCESSED BY: K7PDPSPGD
IMAGERY DATE: 25 SEPTEMBER 2023	MAP FILE NAME: RP_04_SHR_20231025_CS
© 2023 MAXAR TECHNOLOGIES	

HYDROGRAPHIC SURVEY
U.S. ARMY ENGINEER DISTRICT
CORPS OF ENGINEERS
WILMINGTON, NORTH CAROLINA

Shallotte River
Map 1
HOLDEN BEACH, NORTH CAROLINA



Matchline Map 2

LEGEND

Aids to Navigation		Elevation	
	Can		4 and Shallower
	Nun		6 - 4
	Danger Sign		7 - 6
	Green Daybeacon		8 - 7
	Red Daybeacon		10 - 8
	Junction Marker		12 - 10
	Green Light		14 - 12
	Red Light		15 - 14
	Green Lighted Buoy		15 and Deeper
	Red Lighted Buoy		Matchlines
	Mileboard		Navigation Channel
			Placement Areas

NOTES:

- ELEVATIONS ARE IN FEET AND REFER TO NOAA'S REPORTED MEAN LOWER LOW WATER (MLLW) RELATIVE TO THE 1983-2001 TIDAL EPOCH.
- PROJECT SURVEYED WITH DISTRICT SURVEY VESSEL "ROGERS" USING RTK GPS HORIZONTAL POSITIONING EQUIPMENT AND 200 KHZ SOUNDING EQUIPMENT.
- HORIZONTAL DATUM NAD 1983. VERTICAL DATUM M.L.L.W..
- TIDE GAGE LOCATED AT: DAYBEACON 69. USE OF TIDE VALUES FOR THIS GAGE ARE RESTRICTED TO QUALITY ASSURANCE PURPOSES FOR VERIFICATION OF RTK TIDES. THE WILMINGTON DISTRICT WILL ONLY USE STAFF GAGE TIDE VALUES FOR FINAL MAPPING AND QUANTITY CALCULATIONS IF RTK GPS IS UNAVAILABLE AT THE TIME OF SURVEY.
- THIS PROJECT WAS DESIGNED BY THE WILMINGTON DISTRICT OF THE U.S. ARMY CORPS OF ENGINEERS. THE INITIALS AND SIGNATURES AND REGISTRATION DESIGNATIONS OF INDIVIDUALS APPEAR ON THESE PROJECT DOCUMENTS WITHIN THE SCOPE OF THEIR EMPLOYMENT AS REQUIRED BY ER1110-1-8152.
- THE INFORMATION DEPICTED ON THIS SURVEY MAP REPRESENTS THE RESULTS OF SURVEYS MADE ON THE DATES INDICATED AND CAN ONLY BE CONSIDERED AS INDICATING THE GENERAL CONDITIONS EXISTING AT THAT TIME. THESE CONDITIONS ARE SUBJECT TO RAPID CHANGE DUE TO SHOALING EVENTS. A PRUDENT MARINER SHOULD NOT RELY EXCLUSIVELY ON THE INFORMATION PROVIDED HERE. REQUIRED BY 33 CFR 209.325
- NAVIGATION AIDS LOCATED WITH DISTRICT SURVEY VESSEL, ACCURACY +/- 3 METERS.
- FOR THE MOST UP TO DATE INFORMATION PLEASE CHECK OUR WEBSITE AT: WWW.SAW.USACE.ARMY.MIL

